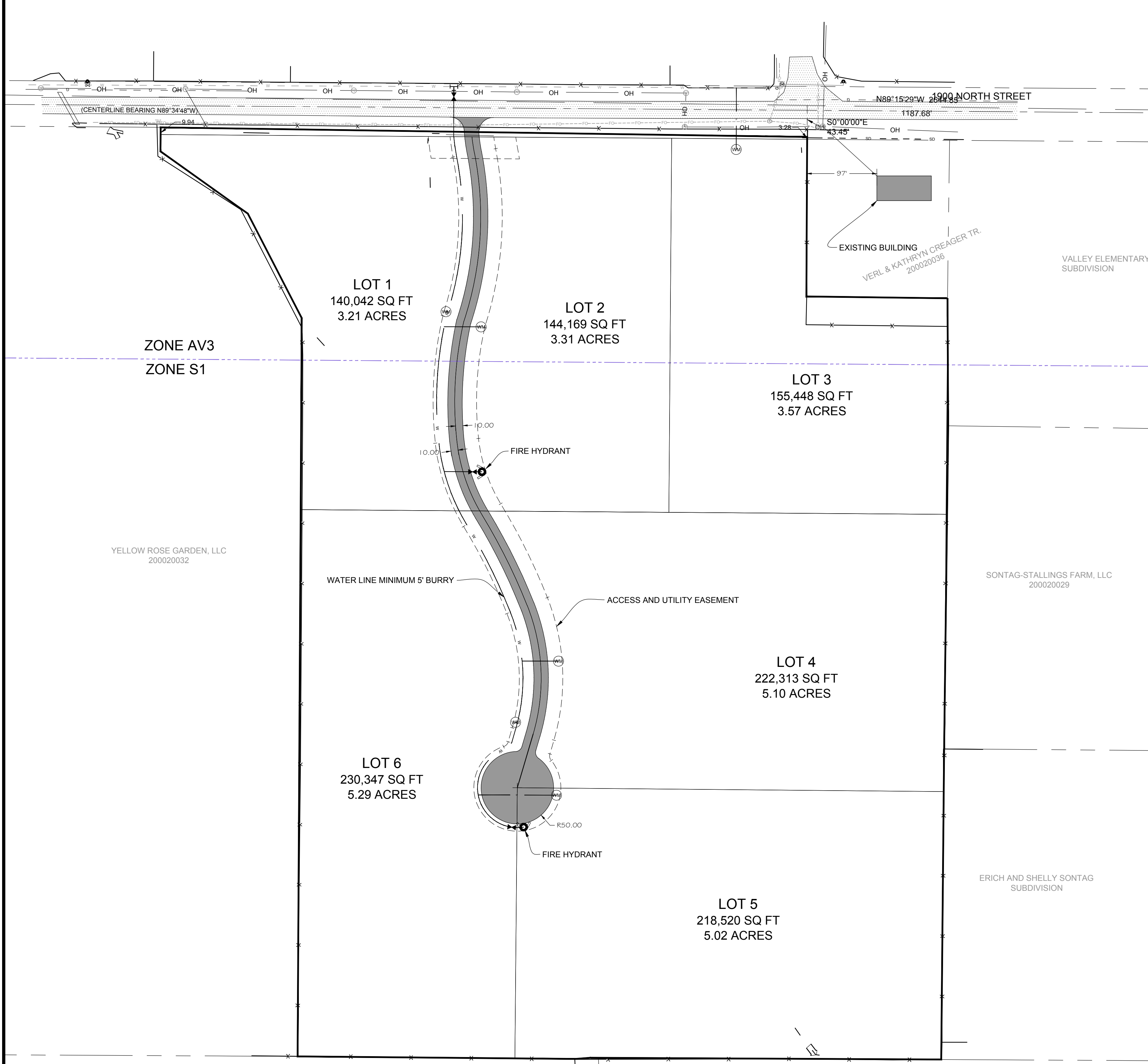


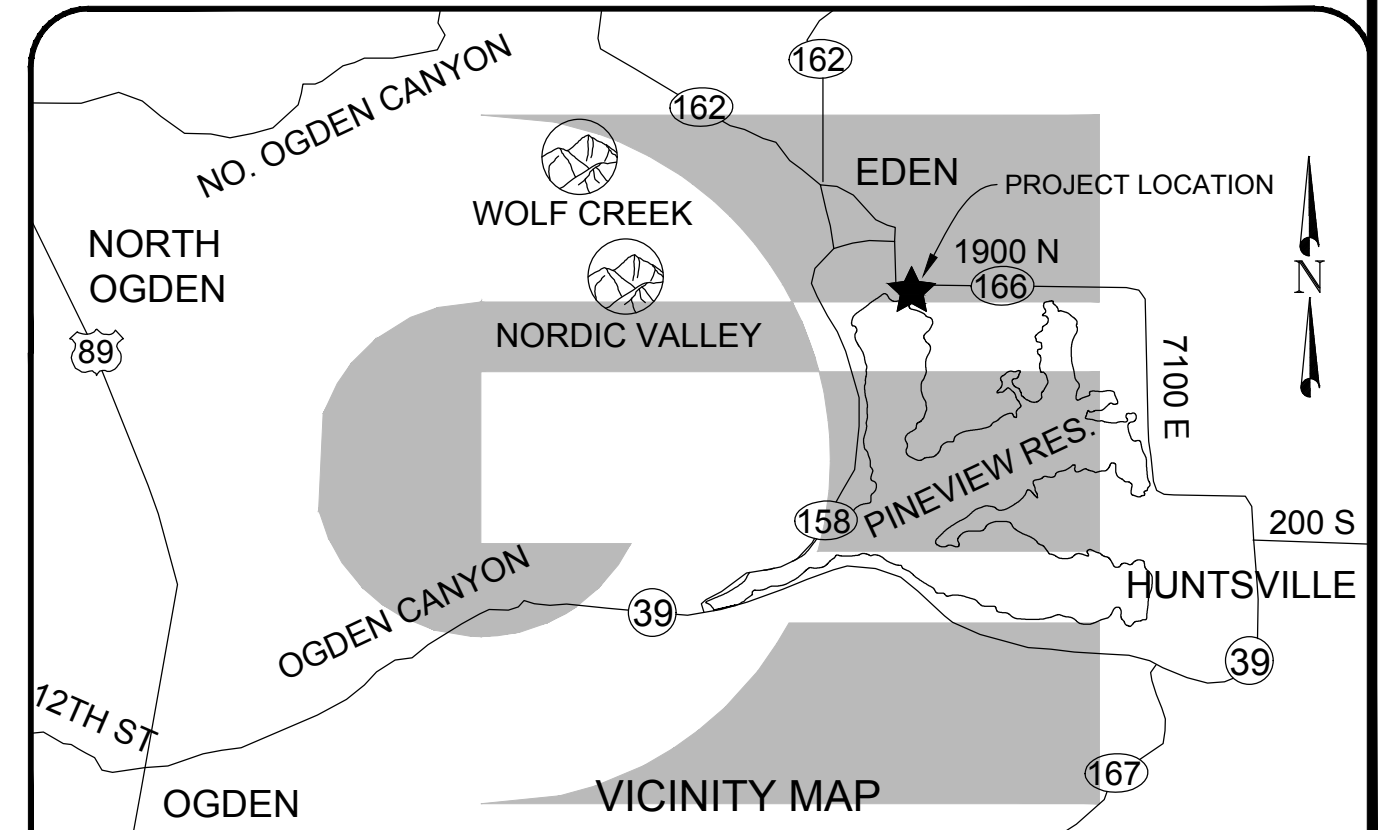
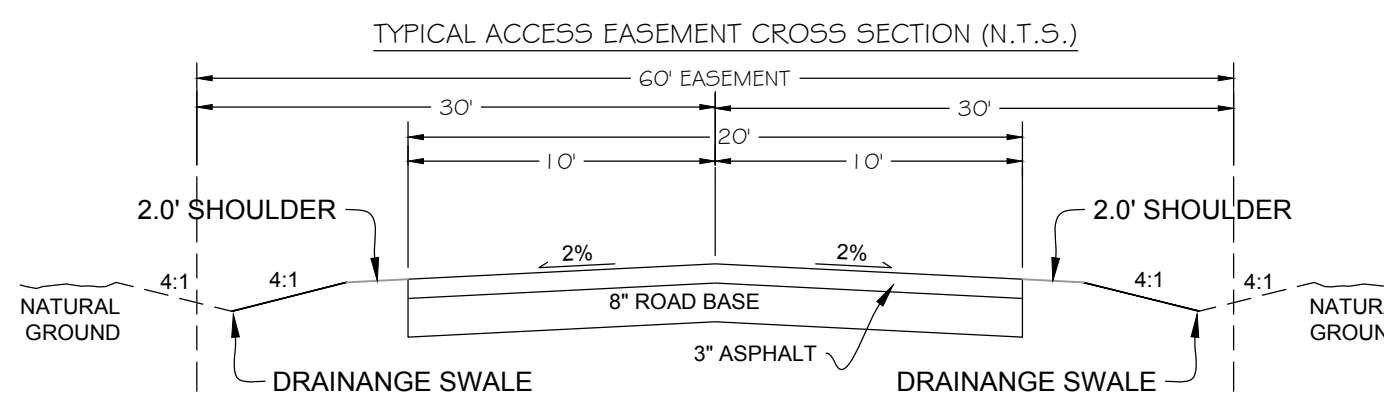
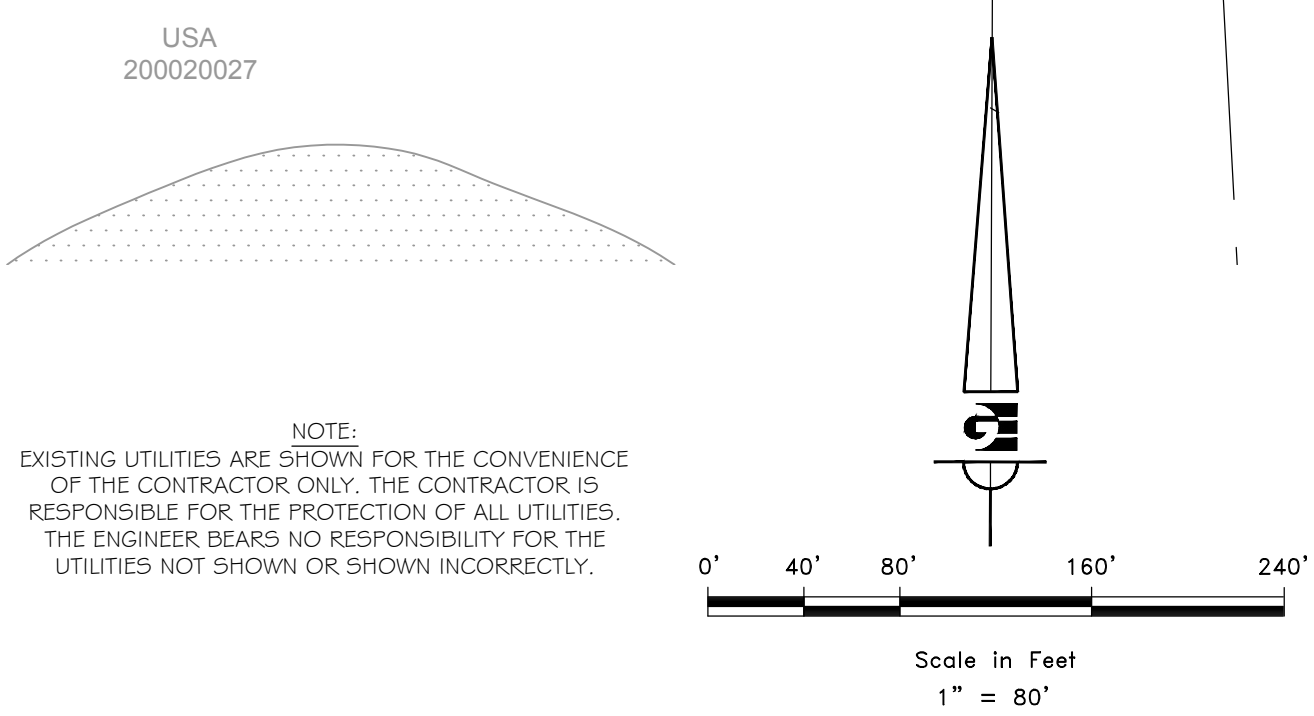
# REFLECTIONS SUBDIVISION IMPROVEMENT PLAN

PART OF THE NORTHWEST QUARTER OF SECTION 2, TOWNSHIP 6 NORTH, RANGE 1 EAST, SALT LAKE BASE AND MERIDIAN WEBER COUNTY, UTAH JUNE 2016



**LEGEND**

- WEBER COUNTY MONUMENT AS NOTED
- SET 24"x5/8 REBAR AND CAP MARKED GARDNER ENGINEERING
- PROPERTY LINE
- INTERIOR LOT LINE
- ADJACENT PARCEL
- SECTION LINE
- CENTER LINE
- EXISTING FENCE
- PUBLIC UTILITY AND ACCESS EASEMENT
- EXISTING STORM DRAIN LINE
- EXISTING COMMUNICATION LINE
- EXISTING OVERHEAD POWER LINE
- EXISTING WATER LINE
- EXISTING GAS LINE
- EXISTING ASPHALT



**Know what's below.** **Call 811 before you dig.**

**BLUE STAKES OF UTAH**  
UTILITY NOTIFICATION CENTER, INC.  
[www.bluestakes.org](http://www.bluestakes.org)  
1-800-662-4111

NOTE:  
EXISTING UTILITIES ARE SHOWN FOR THE CONVENIENCE OF THE CONTRACTOR ONLY. THE CONTRACTOR IS RESPONSIBLE FOR THE PROTECTION OF ALL UTILITIES. THE ENGINEER BEARS NO RESPONSIBILITY FOR THE UTILITIES NOT SHOWN OR SHOWN INCORRECTLY.