

August 5, 2016
Job No. 1661-08N-16

Mr. Eric Householder
Lewis Homes
3718 North Wolf Creek Drive
Eden, Utah 84310

**Re: Mountainside Phase 1 (Western Lots 10 through 17)
Addendum to Engineering Geology Study
The Bridges at Wolf Creek East Phase 1
Parts of Sections 15, 16 and 22 Township 7 North, Range 1 East SLBM
Eden area, Ogden Valley Township, Unincorporated Weber County, Utah
(41.3389 N, 111.8323 W)**

Mr. Householder:

As part of our on-going geological and geotechnical studies for the Bridges at Wolf Creek Master Plan area, a July 25, 2016 Engineering Geology Study report was submitted entitled The Bridges at Wolf Creek East Phase 1. This reporting included only the eastern part (third) of the Master Plan Project, an area of approximately 85 acres that includes the Parkside Phases 1, 2 and 3, and the Mountainside Phases 1, 3 and 4, although our on-going studies continue for the overall Master Plan area.

Inadvertently, the very western lots of the Mountainside Phase 1 (Lots 10 through 17) were not shown as part of the July 25, 2016 reporting, although these lots had been studied as part of the on-going Master Plan studies. While the subject lots are not delineated on our mapping figures included in the July 25 reporting, the area of the subject lots are a part of our on-going analysis and appear on the on the mapping figures summarizing our July 25, 2016 analyses. Attached is a revised Figure 19, Geologic/Natural Hazards Exposure.

Through our previous studies referenced below, the area of western lots on the Mountainside Phase 1 (Lot 10-17) are located almost entirely outside delineated hazard areas (Lot 10 is mapped partially within a landslide hazard area).

July 25, 2016

Engineering Geology Study
The Bridges at Wolf Creek East Phase 1
Parts of Sections 15, 16 and 22 Township 7 North, Range 1 East SLBM
Eden area, Ogden Valley Township, Unincorporated Weber County, Utah
(41.3389 N, 111.8323 W)

GSH Geotechnical, Inc.
473 West 4800 South
Salt Lake City, Utah 84123
Tel: 801.685.9190
www.gshgeo.com

GSH Geotechnical, Inc.
1596 West 2650 South, Suite 107
Ogden, Utah 84401
Tel: 801.393.2012

Lewis Homes
Job No. 1661-08N-16
Addendum Letter – The Bridges at Wolf Creek
August 5, 2016



April 25, 2016

Preliminary Engineering Geology Study
The Bridges at Wolf Creek Master Plan
Parts of Sections 15, 16 and 22 Township 7 North, Range 1 East SLBM
Eden area, Ogden Valley Township, Unincorporated Weber County, Utah
(41.3389 N, 111.8323 W)

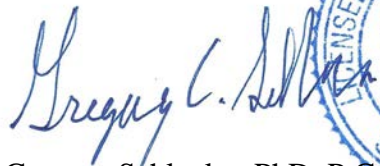
January 21, 2016

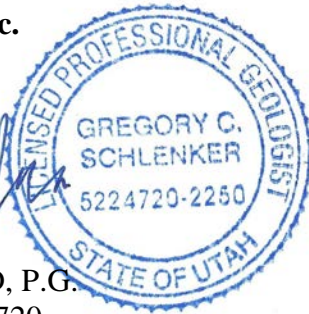
Geotechnical Study
The Bridges at Wolf Creek
Northwest of Fairway Drive
Near Eden, Weber County, Utah
(41.3389 N, 111.8323 W)

If you have any questions or would like to discuss these items further, please feel free to contact us at (801) 393-2012.


Respectfully submitted,

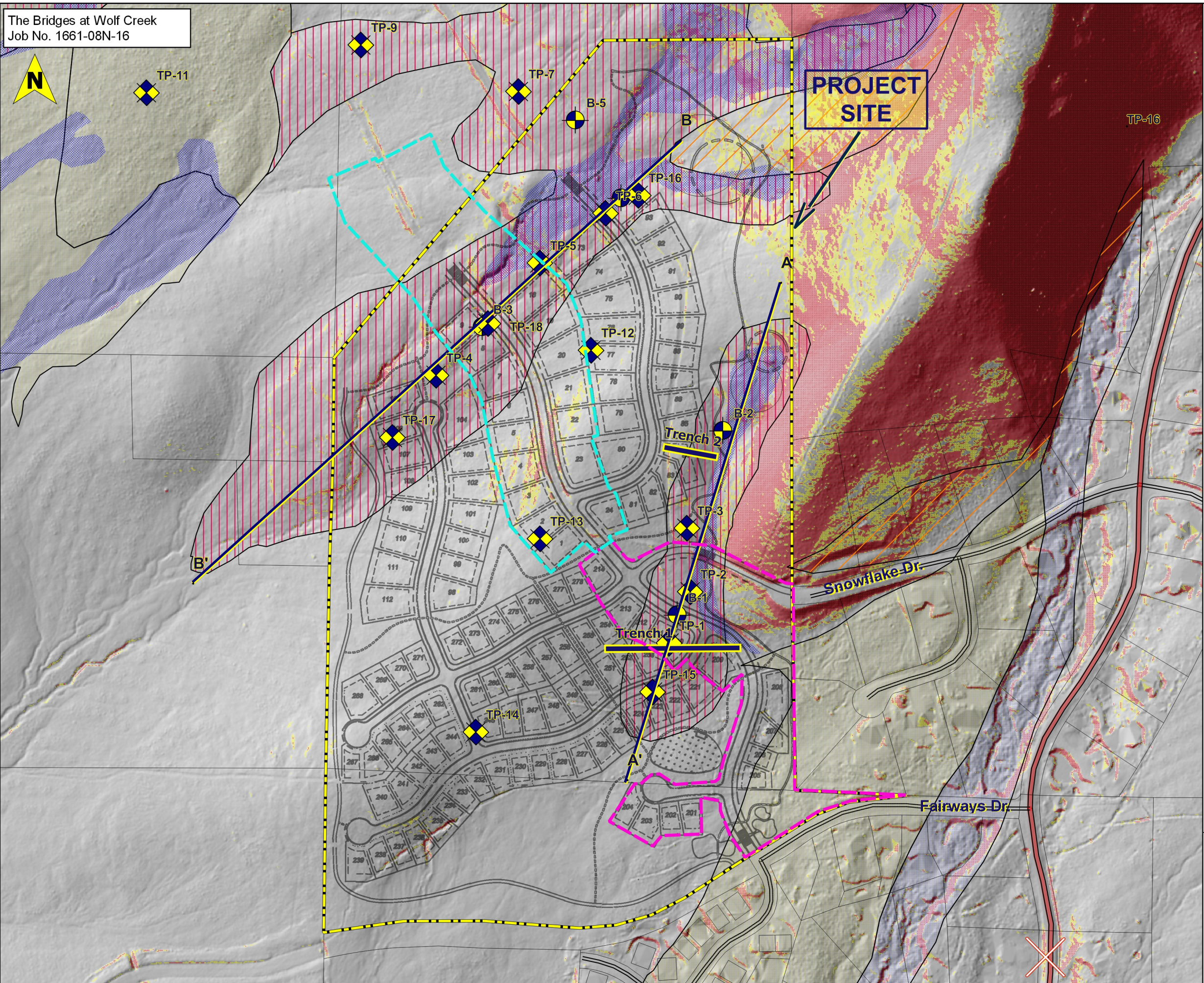
GSH Geotechnical, Inc.


Gregory Schlenker PhD, P.G.
State of Utah No. 5224720
Senior Geologist



Reviewed by:


Andrew M. Harris, P.E.
State of Utah No. 7420456
Senior Geotechnical Engineer



Explanation

- Phase Boundary
- Current Phases 8/3/16
- Mountainside Phase 1
- Parkside Phase 1
- Layout
 - Park Side 1, 2 & 3
 - Mountainside 1, 3, & 4
- SGID10_CADASTRE_Parcels_Weber
- Index contour (10ft)
- Geologic/Natural Hazards**
- Shallow-Seasonal Groundwater
- Alluvial Fan - Debris Flow Hazards
- Landslide - Mass Movement Hazards
- Alluvial Fan - Debris Flow / Landslide - Mass Movement Hazards (combined)
- Slope Stability Hazards
- Flood Zone Hazards
- Steep Slope Areas**
- 25 to 30 percent
- 30 percent and greater



Base: 1:3,600
2006 2.0m geoprocessed LiDAR from Utah AGRC;
<http://gis.utah.gov/>

FIGURE 19
GEOLOGIC/NATURAL
HAZARD EXPOSURE
 GSH