

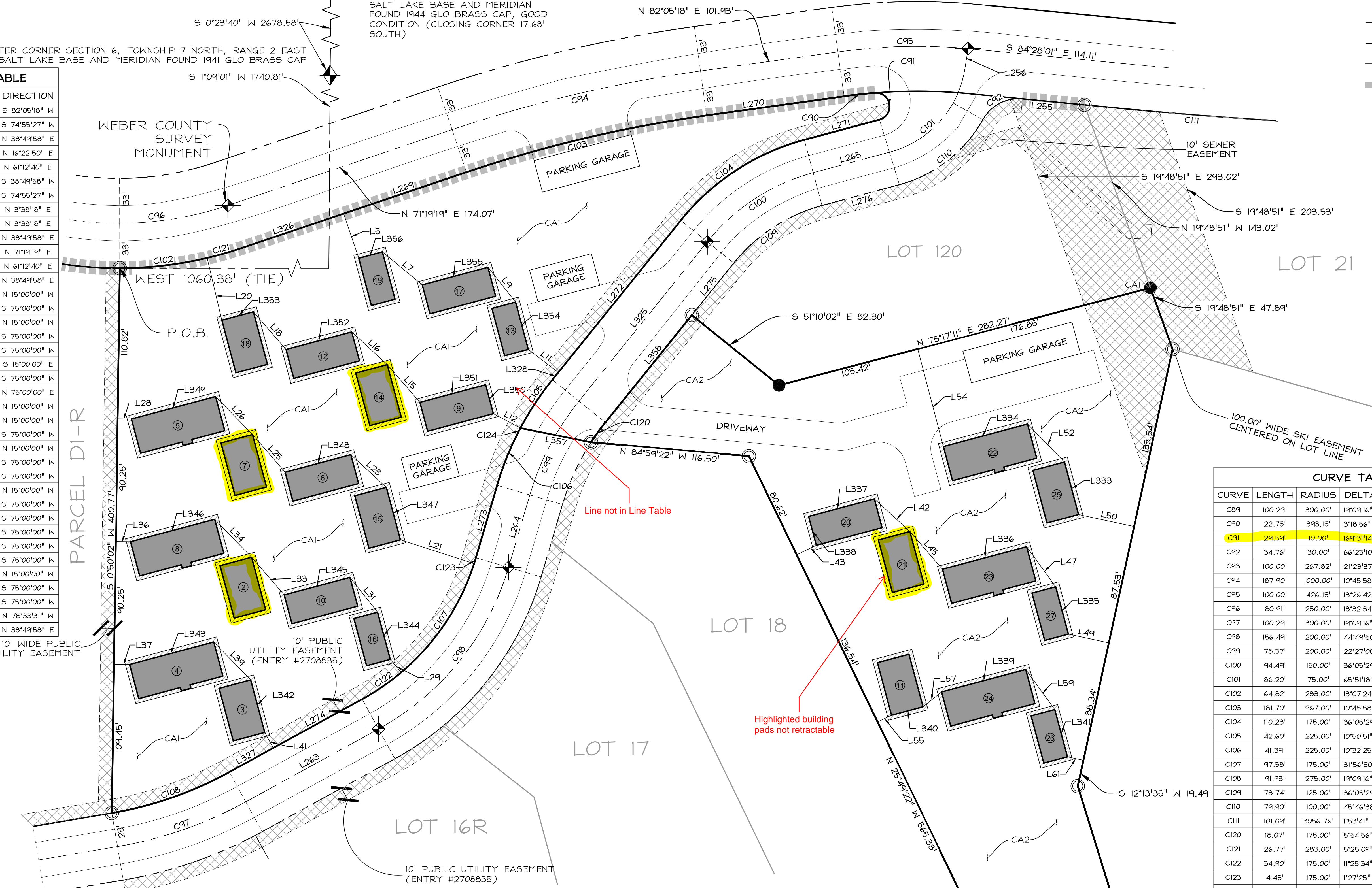
SUMMIT EDEN HORIZON VILLAGE PRUD.DWG
 PPF-C3D-24-38
 Sheet 2

HORIZON NEIGHBORHOOD AT POWDER MOUNTAIN PRUD

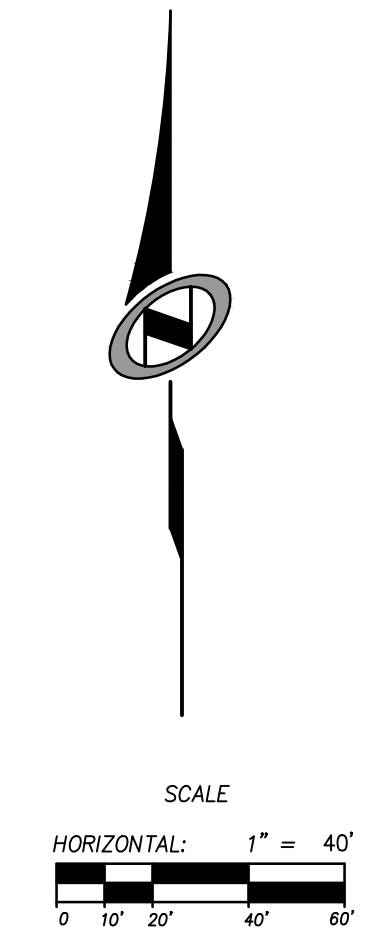
THE SOUTHEAST QUARTER OF SECTION 6, TOWNSHIP 7 NORTH, RANGE 2 EAST, SALT LAKE BASE AND MERIDIAN
 WEBER COUNTY, UTAH
MAY 2016

LEGEND	
	BOUNDARY LINE
	EXISTING LOT LINE
	RIGHT OF WAY LINE
	QUARTER SECTION LINE
	AREA TIE LINES
	NO ACCESS LINE
	STREET MONUMENTS TO BE CONSTRUCTED
	FOUND REBAR WITH PLASTIC CAP STAMPED "NOLTE ASSOC."
	SET REBAR WITH PLASTIC CAP STAMPED "NOLTE ASSOC."
	PRIVATE LOT
	EASEMENT
	LIMITED COMMON AREA
	PRUD LOT NUMBER
	CA1 COMMON AREA PARCEL 100,845 SQ FT 2.32 AC
	CA2 COMMON AREA PARCEL 95,306 SQ FT 2.19 AC

LINE TABLE			LINE TABLE		
LINE	LENGTH	DIRECTION	LINE	LENGTH	DIRECTION
L5	34.63'	N 18°40'41" W	L270	101.93'	S 82°05'18" W
L7	38.01'	N 50°21'45" W	L271	57.18'	S 74°55'27" W
L9	32.70'	N 38°25'43" W	L272	143.55'	N 38°49'58" E
L11	27.87'	S 52°30'24" E	L273	55.51'	N 16°22'50" E
L12	22.64'	S 62°00'52" E	L274	74.51'	N 61°12'40" E
L15	36.67'	N 40°51'59" W	L275	49.20'	S 38°49'58" W
L16	35.51'	N 47°20'51" W	L276	58.91'	S 74°55'27" W
L18	36.67'	N 40°51'59" W	L323	33.00'	N 3°38'18" E
L20	47.08'	N 13°15'31" W	L324	33.00'	N 3°38'18" E
L21	56.88'	S 72°09'45" E	L325	150.49'	N 38°49'58" E
L23	35.51'	N 47°20'51" W	L326	78.76'	N 71°19'19" E
L25	36.67'	N 40°51'59" W	L327	36.83'	N 61°12'40" E
L26	38.95'	N 44°11'51" W	L328	6.93'	N 38°49'58" E
L28	10.19'	N 89°09'58" W	L333	40.00'	N 15°00'00" W
L29	12.46'	S 40°12'55" E	L334	64.00'	S 75°00'00" W
L31	32.70'	N 38°25'43" W	L335	36.00'	N 15°00'00" W
L33	36.67'	N 40°51'59" W	L336	64.00'	S 75°00'00" W
L34	38.95'	N 44°11'51" W	L337	50.00'	S 75°00'00" W
L36	10.84'	N 89°09'58" W	L338	22.00'	S 15°00'00" E
L37	11.49'	N 84°09'58" W	L339	64.00'	S 75°00'00" W
L39	38.95'	N 44°11'51" W	L340	24.00'	N 75°00'00" E
L41	13.04'	S 28°47'20" E	L341	36.00'	N 15°00'00" W
L42	35.51'	N 47°20'51" W	L342	40.00'	N 15°00'00" W
L43	16.08'	S 64°10'38" W	L343	64.00'	S 75°00'00" W
L45	36.67'	N 40°51'59" W	L344	36.00'	N 15°00'00" W
L47	36.40'	N 35°55'28" W	L345	50.00'	S 75°00'00" W
L49	30.48'	S 77°46'25" E	L346	64.00'	S 75°00'00" W
L50	41.77'	S 77°46'25" E	L347	40.00'	N 15°00'00" W
L52	38.95'	N 44°11'51" W	L348	50.00'	S 75°00'00" W
L54	74.24'	N 14°42'49" W	L349	64.00'	S 75°00'00" W
L55	11.36'	S 64°10'38" W	L351	50.00'	S 75°00'00" W
L57	17.46'	S 51°22'14" W	L352	50.00'	S 75°00'00" W
L59	36.40'	N 35°55'28" W	L353	24.00'	S 75°00'00" W
L61	12.01'	S 77°46'25" E	L354	36.00'	N 15°00'00" W
L255	45.85'	N 84°28'01" W	L355	50.00'	S 75°00'00" W
L256	15.56'	N 9°04'09" E	L356	18.00'	S 75°00'00" W
L263	111.34'	N 61°12'40" E	L357	52.84'	N 78°33'31" W
L264	55.51'	N 16°22'50" E	L358	101.29'	N 38°49'58" E
L265	58.91'	N 74°55'27" E			
L269	95.31'	S 71°19'19" W			



CURVE TABLE					
CURVE	LENGTH	RADIUS	DELTA	LONG CHORD	LENGTH
C89	100.29'	300.00'	19°09'16"	N 70°47'17" E	99.83'
C90	22.75'	393.15'	3°18'56"	S 83°44'45" W	22.75'
C91	29.59'	10.00'	169°31'14"	N 9°50'10" W	19.92'
C92	34.76'	30.00'	66°23'10"	S 62°20'24" W	32.85'
C93	100.00'	267.82'	21°23'37"	N 82°56'30" E	99.42'
C94	187.90'	1000.00'	10°45'58"	S 76°42'19" W	187.63'
C95	100.00'	426.15'	13°26'42"	S 88°48'39" W	99.77'
C96	80.91'	250.00'	18°32'34"	N 80°35'36" E	80.56'
C97	100.29'	300.00'	19°09'16"	N 70°47'17" E	99.83'
C98	156.49'	200.00'	44°49'50"	N 38°47'45" E	152.53'
C99	78.37'	200.00'	22°27'08"	S 27°36'24" W	77.87'
C100	94.49'	150.00'	36°05'29"	S 56°52'43" W	92.93'
C101	86.20'	75.00'	65°11'18"	N 41°59'48" E	81.54'
C102	64.82'	283.00'	13°07'24"	N 83°18'11" E	64.68'
C103	181.70'	967.00'	10°45'58"	S 76°42'19" W	181.44'
C104	110.23'	175.00'	36°05'29"	S 56°52'43" W	108.42'
C105	42.60'	225.00'	10°50'51"	S 33°24'33" W	42.53'
C106	41.39'	225.00'	10°32'25"	S 21°39'02" W	41.33'
C107	97.58'	175.00'	31°56'50"	N 33°48'40" E	96.32'
C108	91.93'	275.00'	19°09'16"	N 70°47'17" E	91.51'
C109	78.74'	125.00'	36°05'29"	S 56°52'43" W	77.44'
C110	79.90'	100.00'	45°46'38"	N 52°02'08" E	77.79'
C111	101.09'	3056.76'	1°53'41"	S 85°24'51" E	101.09'
C120	18.07'	175.00'	5°54'56"	N 35°52'30" E	18.06'
C121	26.77'	283.00'	5°25'09"	N 74°01'54" E	26.76'
C122	34.90'	175.00'	11°25'34"	N 55°29'52" E	34.84'
C123	4.45'	175.00'	1°27'25"	N 17°06'33" E	4.45'
C124	4.18'	225.00'	1°03'53"	S 27°27'11" W	4.18'

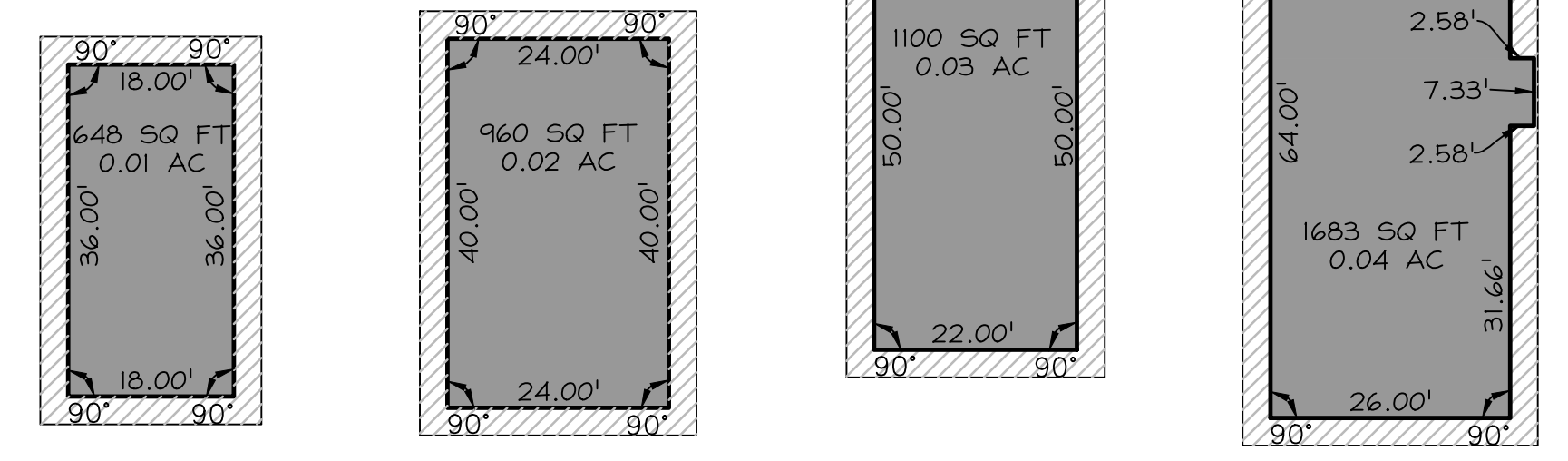


LOT CONFIGURATION FOR 1500+ SQ FT UNIT UNITS 6, 9, 10, 12, 17, 20 N.T.S.

LOT CONFIGURATION FOR 2500 SQ FT UNIT UNITS 4, 5, 8, 22, 23, 24 N.T.S.

LOT CONFIGURATION FOR 1000 SQ FT UNIT UNITS 13, 16, 19, 26, 27 N.T.S.

LOT CONFIGURATION FOR 1500 SQ FT UNIT UNITS 2, 3, 7, 11, 14, 15, 18, 21, 25 N.T.S.



OWNER

SMHG PHASE I, LLC
 3632 N. WOLF CREEK DR.
 EDEN, UT 84310

Sheet **2** of 2

5217 SOUTH STATE STREET, SUITE 200 MURRAY, UT 84107
 801.743.1300 TEL 801.743.0300 FAX WWW.NOLTE.COM

RECORDED #

STATE OF UTAH, COUNTY OF WEBER, RECORDED AND FILED AT THE

REQUEST OF: _____

ENTRY NO: _____

DATE: _____ TIME: _____

BOOK: _____ PAGE: _____

FEE \$ _____

WEBER COUNTY RECORDER