

# Exhibit A

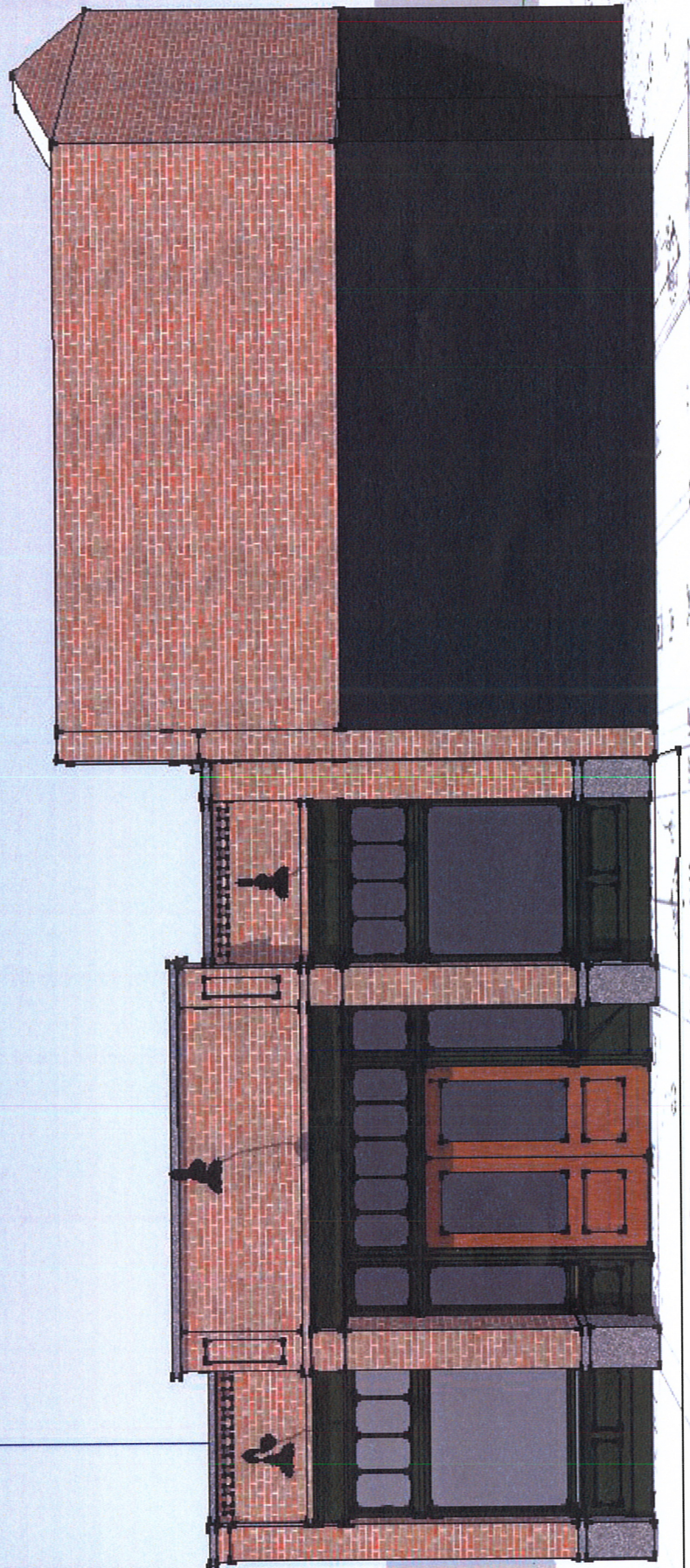


## BLACKSMITH VILLAGE

EDEN LEAF  
VANZEBEN ARCHITECTURE



# Exhibit B 1/2





B 2 1/2

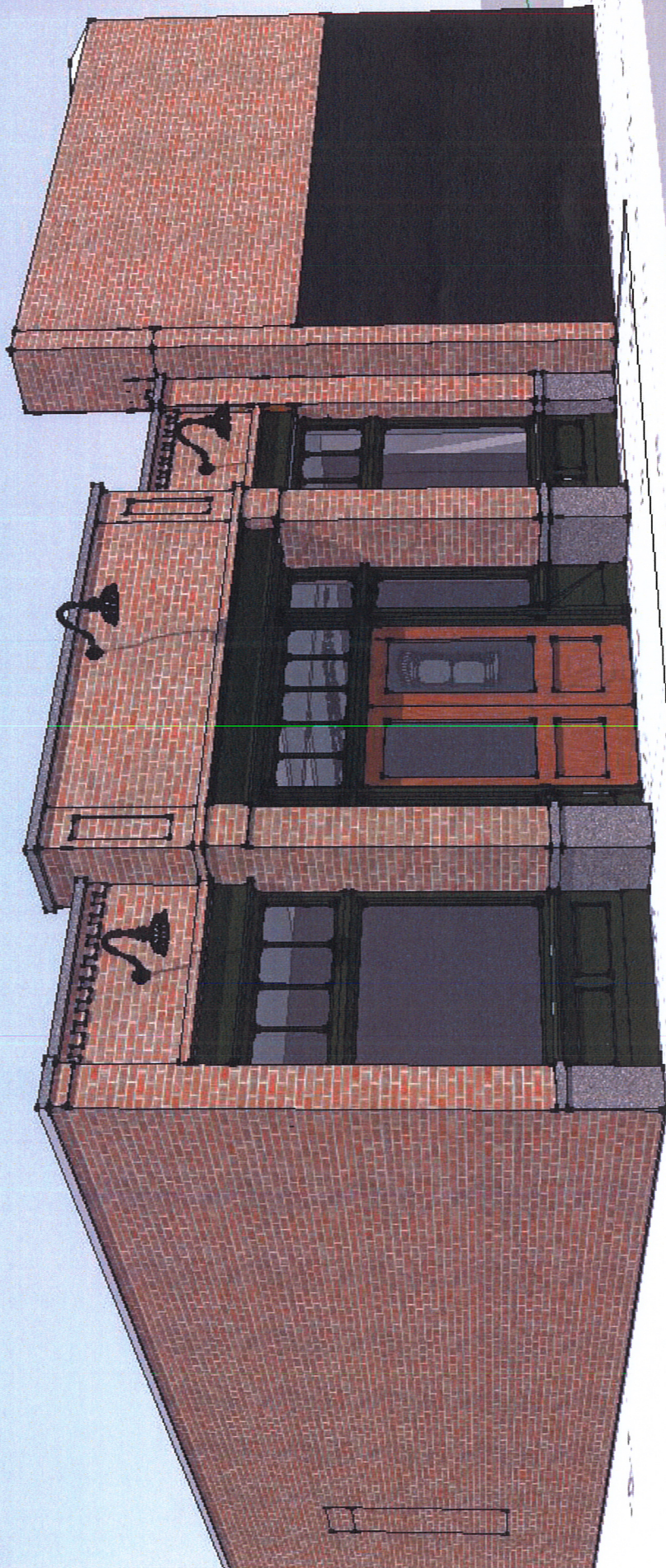
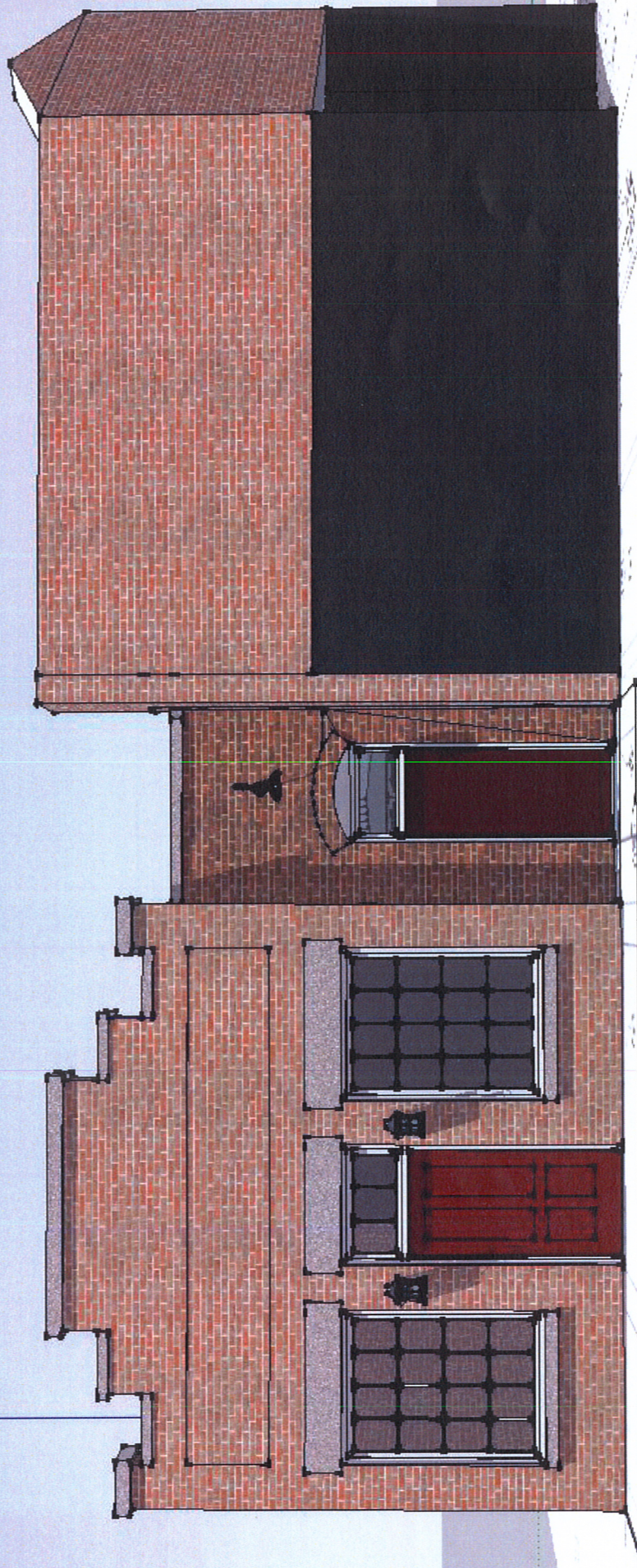




Exhibit C 1/2



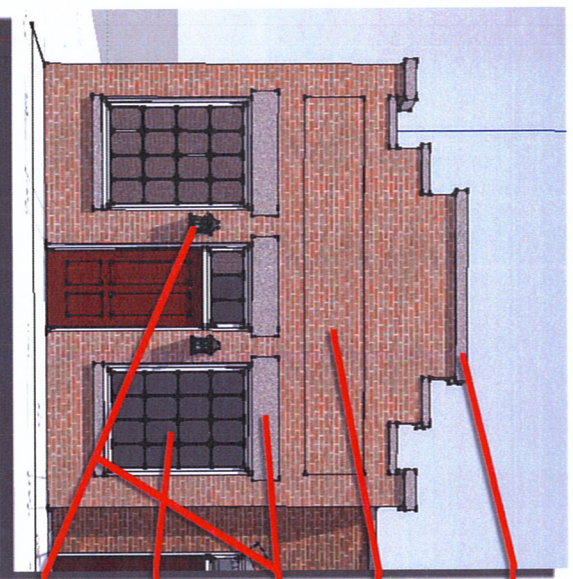


C 2 1/2





# Exhibit D



no chimney

Precast or stone  
parapet caps.

Inset area for signage.

Precast or stone headers  
and sills.

All wood windows  
painted white.

Exterior lighting

chimney

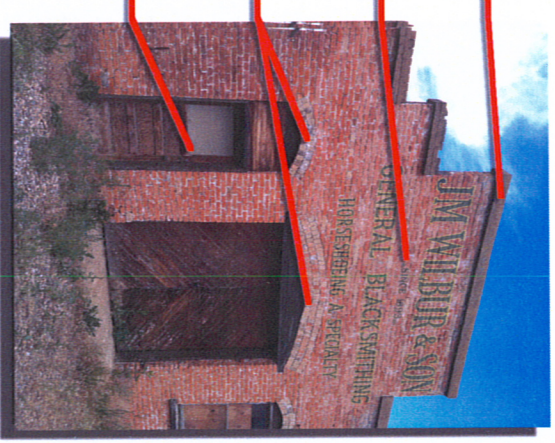
Precast concrete

Original painted  
signage

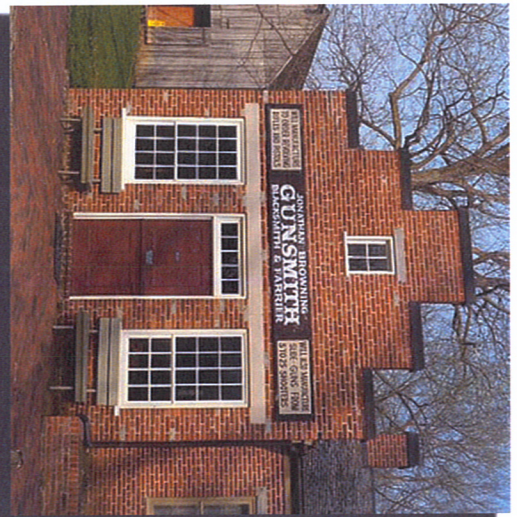
Arch detail over  
windows and doors.

All wood windows in  
a natural color.

no exterior lighting



The Browning Gunsmith Building.  
Nauvoo, IL



The new facade is designed to mimic the Browning gun building in Nauvoo IL. Key details were copied to capture the essence of this building.

The only true similarities between the buildings are basic shape and the use or parapet walls. Door and windows sizes, styles, and color are different.