

# Exhibit A

Ogden Valley Homes, Inc.  
2261 North Highway 158  
Eden, Utah 84310  
(801) 814-7433 Fax: (801) 745-3859

---

August 16, 2013

To whom it may concern,

As you are familiar with the space between the front of the Blacksmith Village and the street side is very limited. When we began this project, we would have preferred to build further back from the street, however the existing blacksmith shop, which is the keystone to this project determined the building setback.

We would like to create a safe area for gathering inside the fenced area. Locating the fence on the outer edge of the berm area was intended to allow us to use the landscaping as part of what is the sidewalk area of this project. Our objective is to soften this area with landscaping or grass areas that feel welcoming to what will be a gathering space. If the fencing were on the inside of the berm this area would be cut off from the gathering areas and only accessible from the street.

Located within this fence will be several "wicket and sweep" gates (see attached photo) to allow easy access for pedestrian's to enter and enjoy this gathering area.

Please contact me with any questions.

Thanks for your time and consideration

Justin Pack

DEED LINE

# Exhibit B

Fence

Lamp Posts

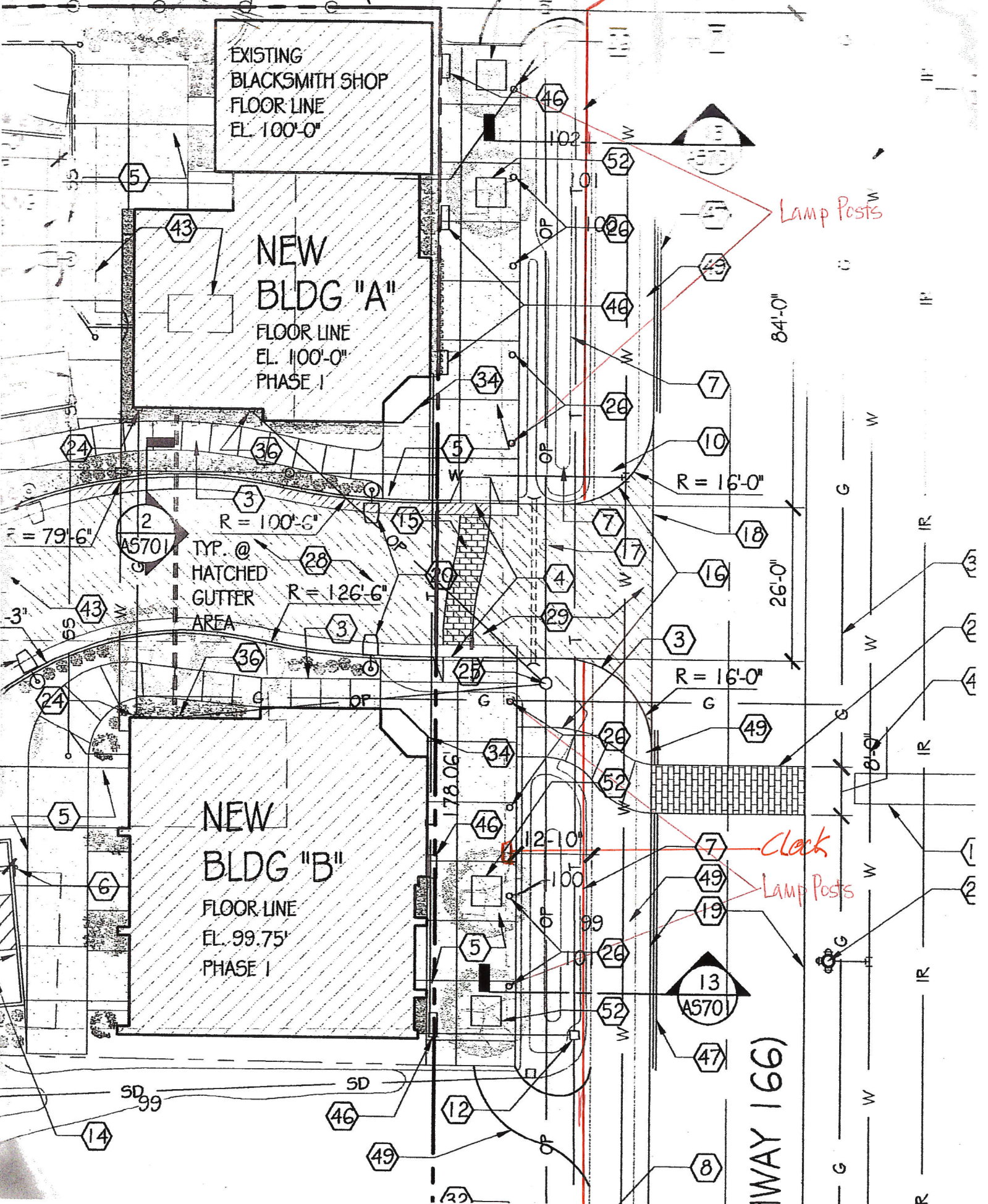
Clock  
Lamp Posts

WAY 166

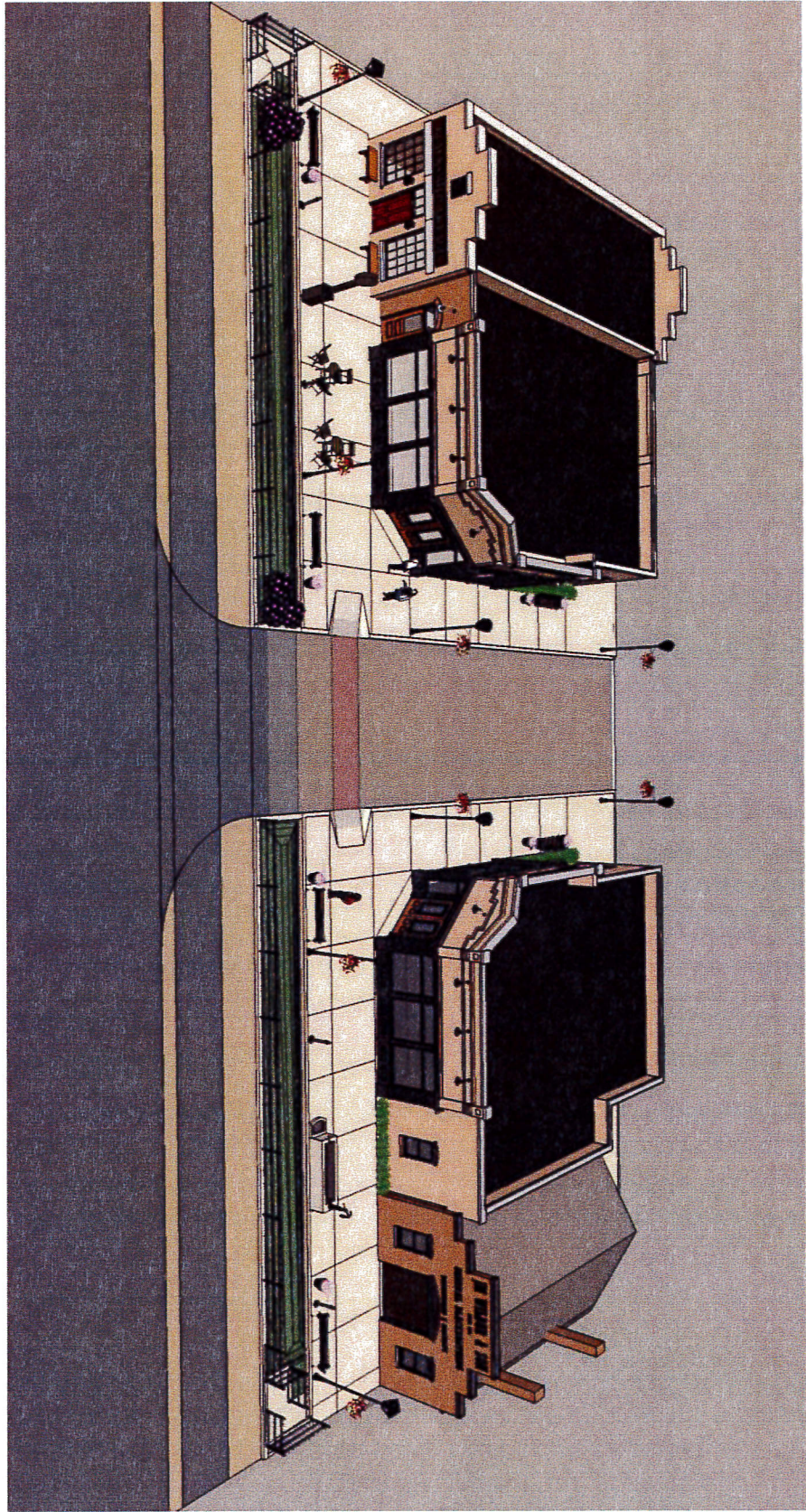
EXISTING  
BLACKSMITH SHOP  
FLOOR LINE  
EL. 100'-0"

NEW  
BLDG "A"  
FLOOR LINE  
EL. 100'-0"  
PHASE I

NEW  
BLDG "B"  
FLOOR LINE  
EL. 99.75'  
PHASE I







# Exhibit C

## PLANTING LEGEND TO CHANGES MADE TO THE STREETSIDE LANDSCAPE PLAN FOR BLACKSMITH VILLAGE DEVELOPEMENT

MARKS COINISDE WITH THE CURRENT PLAN

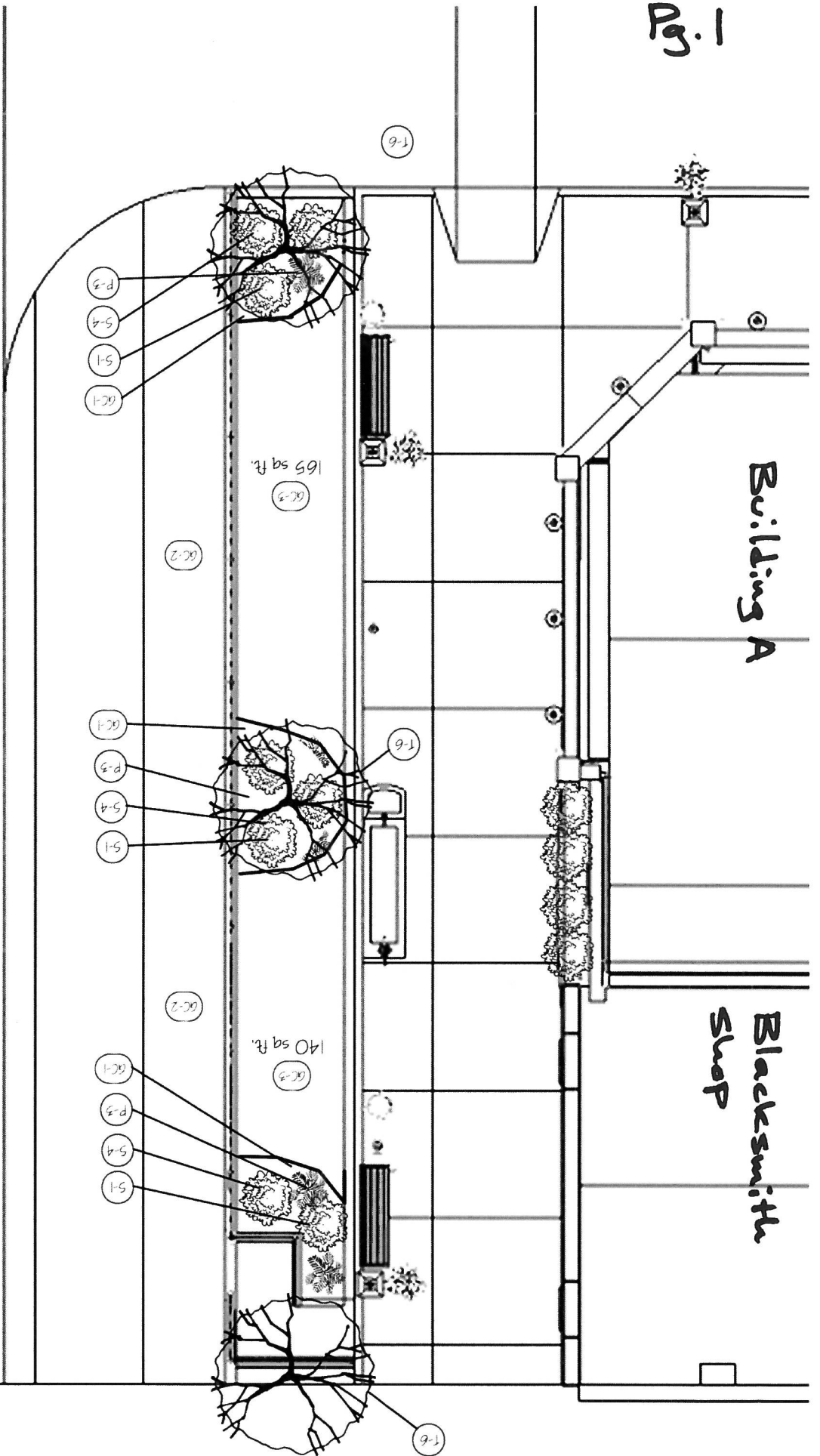
MARK	COMMON NAME	BOTANICAL NAME	SIZE
(T-6)	FLOWERING PLUMB	PRUNUS Cerasifera NEWPORT	2" CAL.
(S-1)	NINE BARK "DARTS GOLD"	PHYSOCARPUS OPULLIFOLIUS	5 GAL.
(S-4)	YELLOW TWIG DOGWOOD	CORNUS STOLONIFERA	5 GAL.
(P-3)	HOSTS	HOSTA "GREAT EXPECTATIONS"	5 GAL.
(P-10)	DAFFODIL ☆	NARCISSUS "KING ALFRED"	
(P-11)	DUTCH CROCUS ☆	CROCUS VERNUS	
(P-12)	GRAPE HYACINTH ☆	MUSCARI ARMENIACUM	
(GC-1)	CEDAR BARK CHIPS		
(GC-2)	CRUSHED STONE		
(GC-3)	SOD		

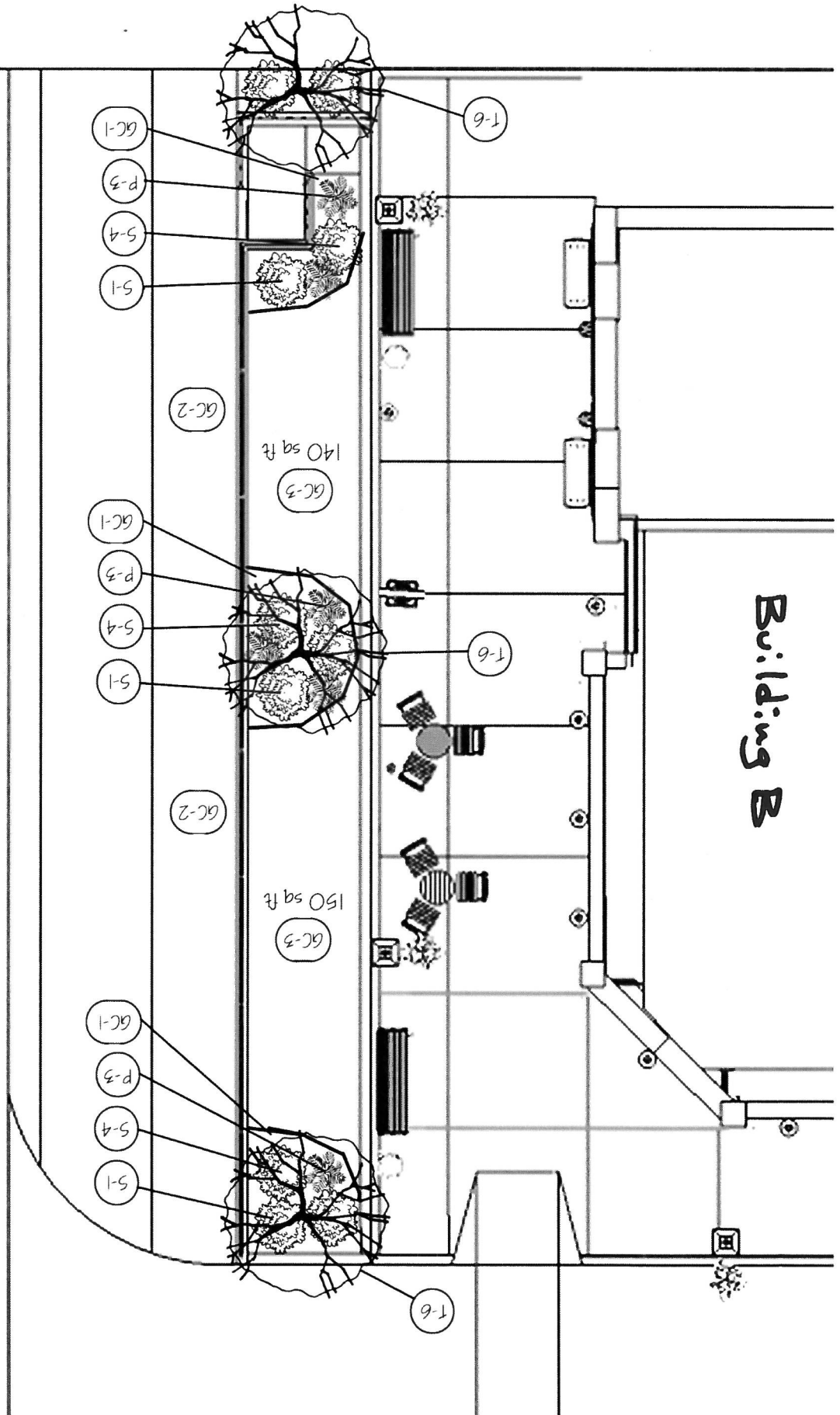
☆ PLANTED UNDER SODDED AREAS



Building A

Blacksmith Shop







# Exhibit D

Wilkinson, Sean

---

**From:** Justin [ogdenvalleyhomes@gmail.com]  
**Sent:** Wednesday, August 14, 2013 7:05 AM  
**To:** Wilkinson, Sean  
**Subject:** Fwd: lamp post

Sorry forgot to attach first time.

Sent from my iPad

Begin forwarded message:

**From:** [MECHAM6@aol.com](mailto:MECHAM6@aol.com)  
**Date:** August 5, 2013, 3:20:36 PM MDT  
**To:** [ogdenvalleyhomes@gmail.com](mailto:ogdenvalleyhomes@gmail.com)  
**Subject:** lamp post

here is the link to the lamp pole lantern. first paragraph states it has a dark sky option.

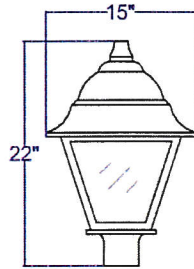
[http://ww2.anplighting.com/Products/Luminaires/Technical.aspx?part\\_number=LA1011](http://ww2.anplighting.com/Products/Luminaires/Technical.aspx?part_number=LA1011)

Shown here is the 12' and 15' options. Scott wants to go with the 12'



[Return To Index](#)**LA1011 - TECHNICAL SPECIFICATIONS**Contact  
Information: 

View Full Size



View Full Size

**Weight:** 13.5**EPA:** 1.45**Max Wattage**

HID: 100w

LED: 40/45w

Induction (IND): 55w

Fluorescent (WPL): 42w

[Application Photos](#)[Project Drawings](#)[Photometrics](#)[Print/Send](#)[Request a Quote](#)[Product Order Guide](#)**Lantern**

This traditional style lantern has all cast aluminum components and stainless steel hardware. Decorative top finial can be selected from a variety of finials for a custom look. The dome shaped, hinged and gasketed hood has tool-less entry for easy lamp and ballast access. Horizontal Lamping is available and is Dark Sky Capable.

**Lens**

Lantern Lens material for clear (CL), frosted (FR) and seeded (SE) comes standard in polycarbonate. Acrylic option is available. Prismatic Lens material comes standard in acrylic.

**Light Source**

HID Ballast shall be high power factor EISA compliant with a lamp starting temperature down to -20°C. Sockets will be medium/mogul base porcelain. 4Kv rated. Fluorescent Ballast will be electronic with a lamp starting temp of -18°C. Fluorescent sockets will be 4 pin to accept quad or triple tube lamps.

**LED**

High Performance LED with patented pixel design for maximum thermal management

- Efficacy over 90 lumens per watt
- Customized lens precisely directs the light Type II, III and V
- Operating temp of -30C to 55C
- Dimmable – 0-100%
- Life: L70 50,000 hours
- Color temp: 3500k, 4000k, and 5000k
- CRI: >70 @ 5,000K
- LED platform built in series – parallel circuits ensuring consistent light output in the event of single LED failure

- Fully compliant with the RoHS Directive
- Certifications: ETL
- Driver Specifications:
  - Rated IP65 rated with an optional IP66 rating
  - Operating at 350mA or 400mA
  - Built in surge protection
  - Current constant output 50/60HZ
  - Driver Efficiency>90% power factor above 99%

**Optics:**

The R3 and R5 glass borosilicate refractors are available for Type III and Type V light distribution. Louvers in White (louW) or polished aluminum (louP) and the Spun Cone Reflector in White (CR) or Polished (CRP) produce a typical Type V distribution. Segmented reflectors (H2, H3, H4, H5) consist of highly reflective alzak material manufactured to produce high lumen output and a specific light pattern. Spun aluminum reflectors (S5) will be highly polished to produce a typical type V distribution.

**Accessory**

House side shields (HSS, HSSX) made from polished aluminum for high reflectivity typical 120 degrees blockage, Optional light elimination

reflective light lids available to reduce uplight (PHSSX, PRX). Button Photo cell (PC) 120/277 and Twist Lock Photo control (TLPC) 120-277V available. Classic Glass Chimney (CH) available.

**Voltage**

HID 120-277 volts, LED 120-277 volts, Induction 120 or 277 volts, Fluorescent 120-277 volts.

**Finish**

Our products are painted at a TIGER Drylac® approved facility. All ANP luminaires are finished in our polyester powder coat for exceptional durability and color retention. Products undergo an intensive five step process in which they are cleansed, treated with iron phosphate, and sealed to pre-treat the metal surface for maximum paint adhesion. Whether applied as a textured coat or a smooth gloss, our high quality finish is electro-statically applied and baked at 430° for maximum hardness and wear.

Marine grade paint - See marine grade specifications

**Warranty:**

See terms and conditions for complete fixture and ballast warranty. LED warranty information

- 5 year limited warranty\*
- Life: L70 -50,000 hours
- Ease of maintenance and future upgrades with our independent heat sink technology

\*5 year limited Warranty: LED platforms will be warranted for a period of 5 years from date of installation. A typical year is defined as 4380 hours of operation. Failure

**PLATFORM PERFORMANCE**

Color Temp	System Wattage	Drive Current	Delivered Lumens	Efficacy Lumen/Watt	# of Chips
3500K	40w	300mA	3000lm	75	35
3500K	45w	400mA	3240lm	72	35
3500K	68w	300mA	5100lm	75	60
3500K	77w	400mA	5544lm	72	60
4000K	38w	350mA	3610lm	95	35
4000K	44w	400mA	3960lm	90	35
4000K	65w	350mA	6175lm	95	60
4000K	73w	400mA	6570lm	90	60
4000K	96w	350mA	9120lm	95	90
4000K	108w	400mA	9720lm	90	90
5000K	42w	350mA	4200lm	100	35
5000K	47w	400mA	4455lm	95	35
5000K	72w	350mA	7200lm	100	60
5000K	80w	400mA	7600lm	95	60
5000K	108w	350mA	10800lm	100	90



# Exhibit E

