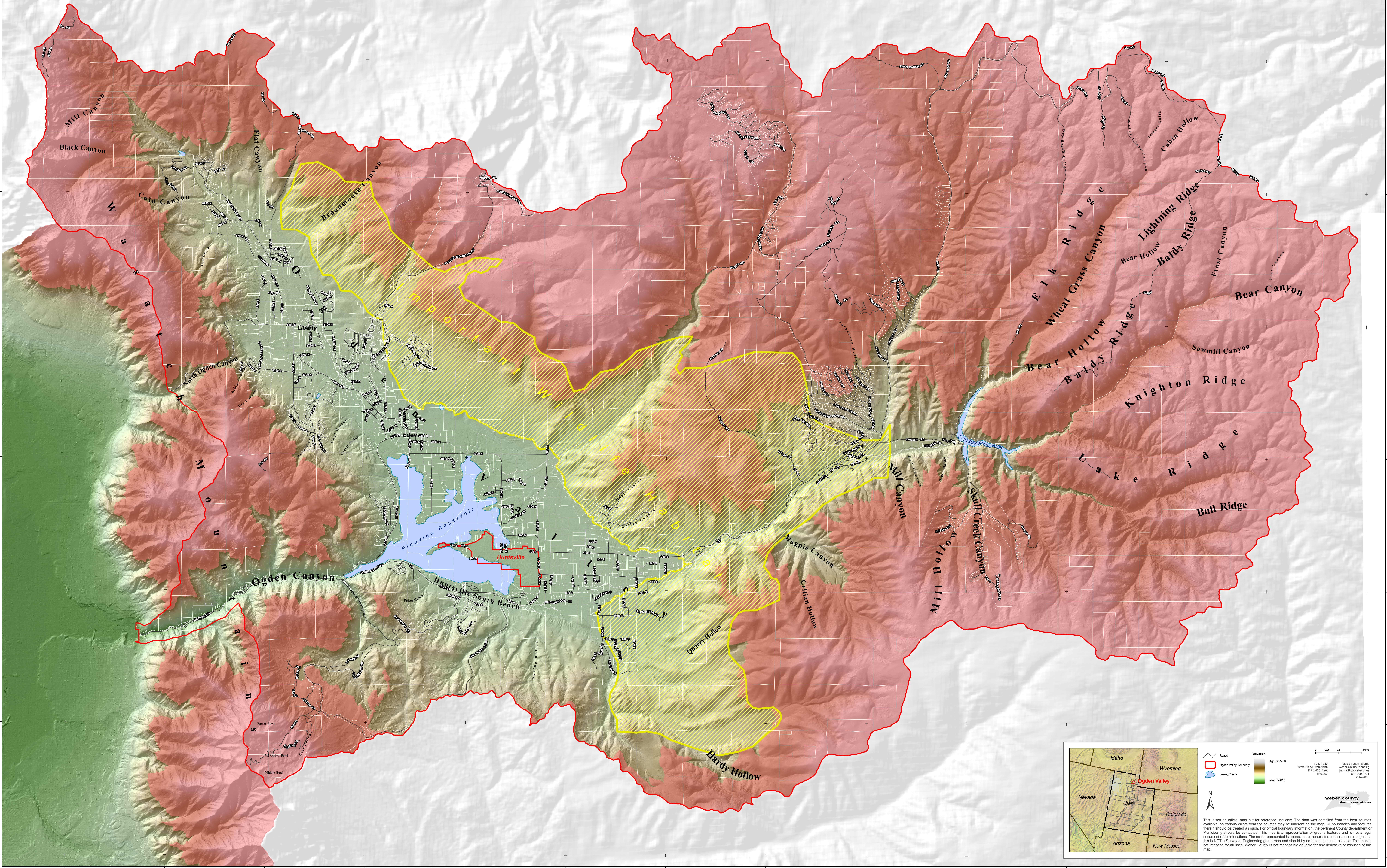


Ogden Valley 6,200 Foot Elevation



Legend

- Roads
- Ogden Valley Boundary
- Lakes, Ponds
- Elevation
- High: 2966
- Low: 1243

Scale

0 0.25 0.5 1 Miles

Map by Justin Morris
Weber County Planning
jmorris@webercountygov.com
801-399-8711
2/14/2008

weber county
planning commission

This is not an official map but for reference use only. The data was compiled from the best sources available, so various errors from the sources may be inherent on the map. All boundaries and features therein should be treated as such. For official boundary information, the pertinent County Department or Municipality should be contacted. This map is a representation of ground features and is not a legal document of their locations. The scale represented is approximate, non-scaled or has been changed, so this is NOT a Survey or Engineering grade map and should by no means be used as such. This map is not intended for all uses. Weber County is not responsible or liable for any derivative or misuses of this map.