

PHASE 2

Easement vacation for Charles Adams Allen Estates Lot 27

(PARCEL NUMBER: \_\_\_\_\_)

10' PUBLIC UTILITY & DRAINAGE EASEMENT

Vacate UTILITY EASEMENT on **east** side of property

(S21 deg. 56' 39" E)

10' PUBLIC UTILITY & DRAINAGE EASEMENT

Vacate UTILITY EASEMENT on **south** side of property

(S70 deg. 50' 18" W)

10' PUBLIC UTILITY & DRAINAGE EASEMENT

Vacate UTILITY EASEMENT on **west** side of property

(S 28 deg. 24' 29" E)

SEE ~~ATTACHED MAP~~ EXHIBIT A

EXHIBIT A

PART OF THE NE.1/4, OF SECTION 28, T.6N., R.2W., S.L.B. & M.  
ALLEN ESTATES SUBDIVISION PHASE 2

429

TAXING UNIT: 377

IN WEBER COUNTY

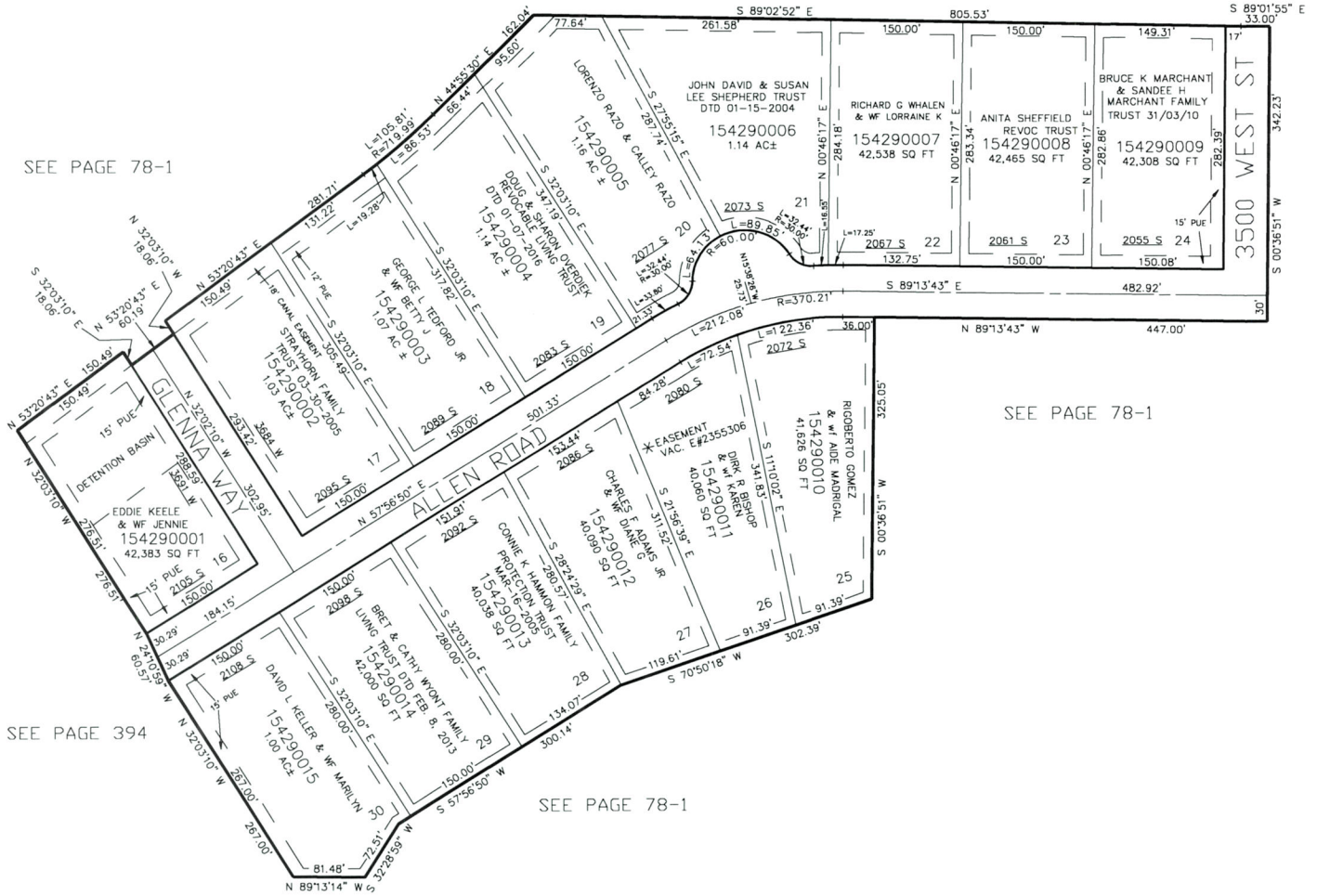
SCALE 1" = 100'

NORTH ARROW

SEE PAGE 78-1

SEE PAGE 78-1

SEE PAGE 78-1



SEE PAGE 394

SEE PAGE 78-1

10' UTILITY & DRAINAGE EASEMENTS EACH SIDE OF PROPERTY LINES AS INDICATED BY DASHED LINES EXCEPT AS OTHERWISE SHOWN.

FOR COMPLETE ENG DATA SEE ORIGINAL DEDICATION PLAT IN BOOK 64, PAGE 86 OF RECORDS.