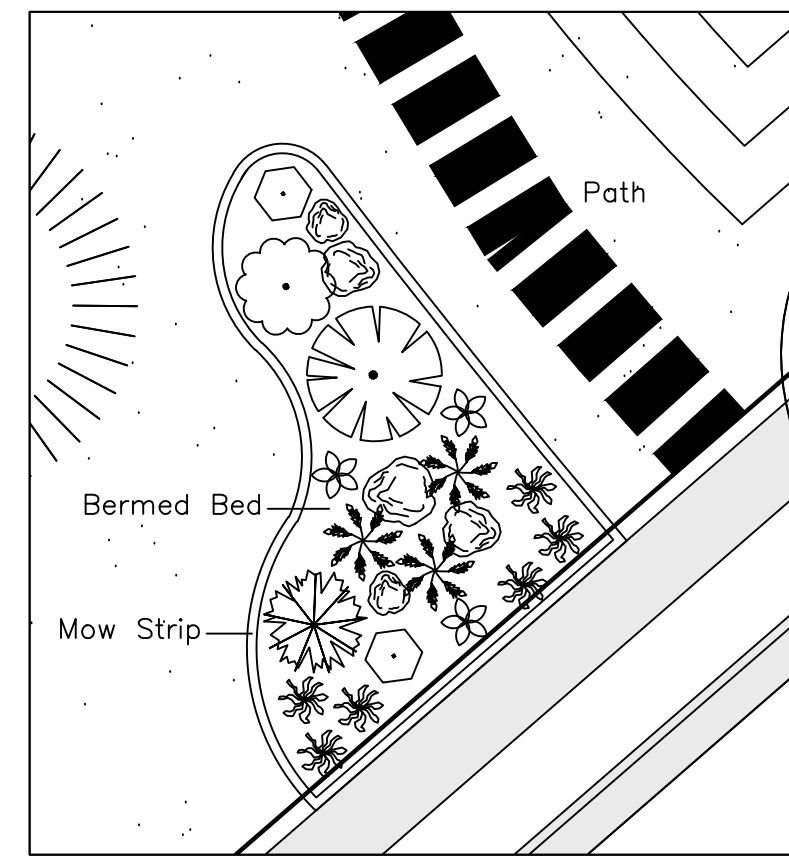
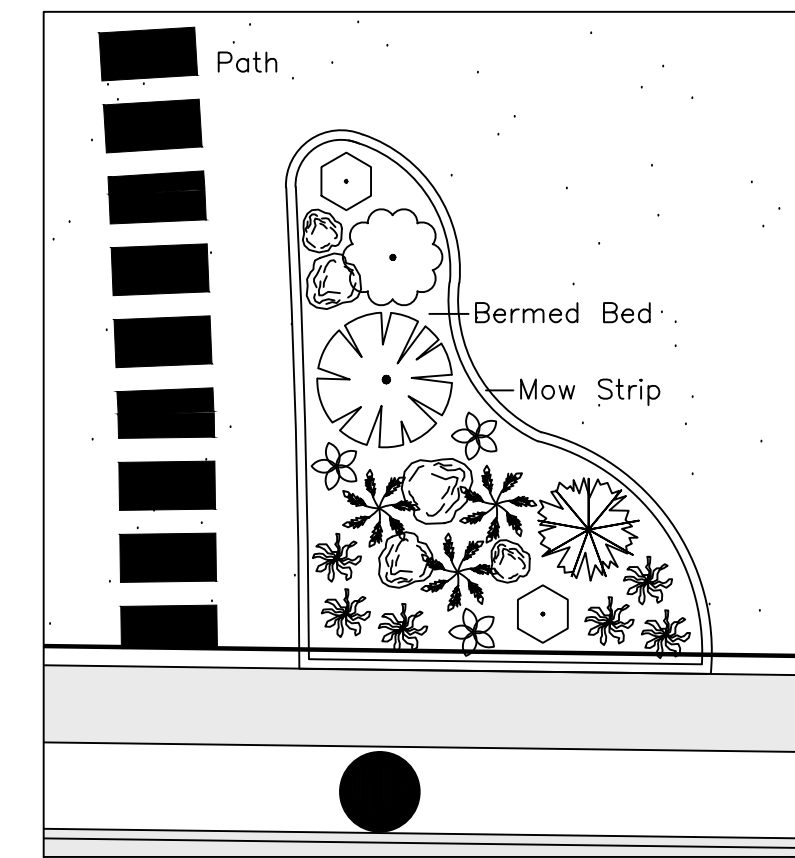


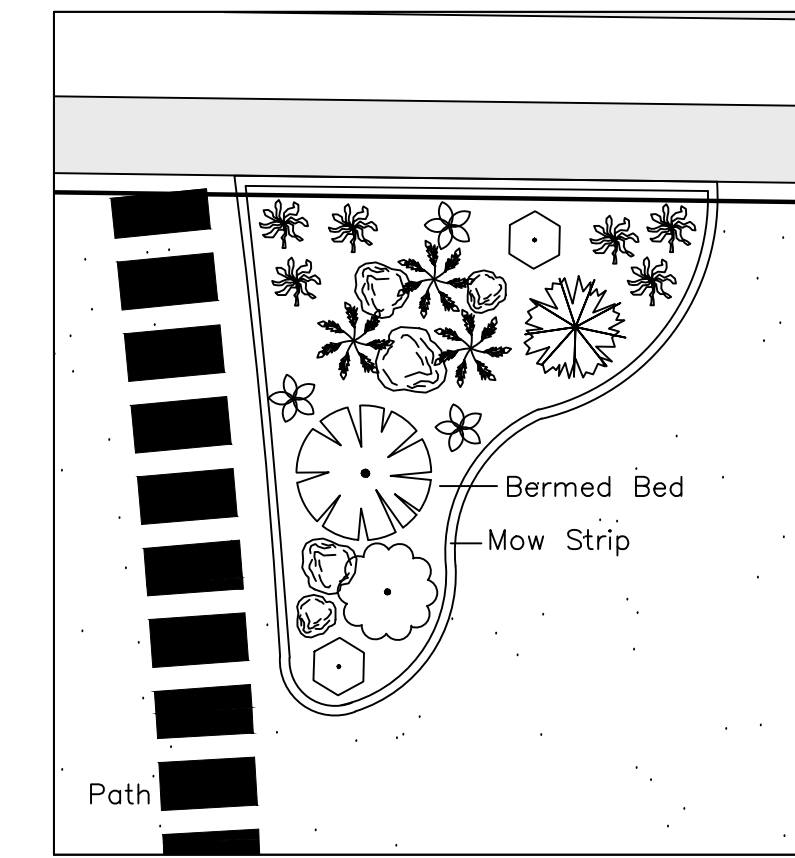
Vaquero Village



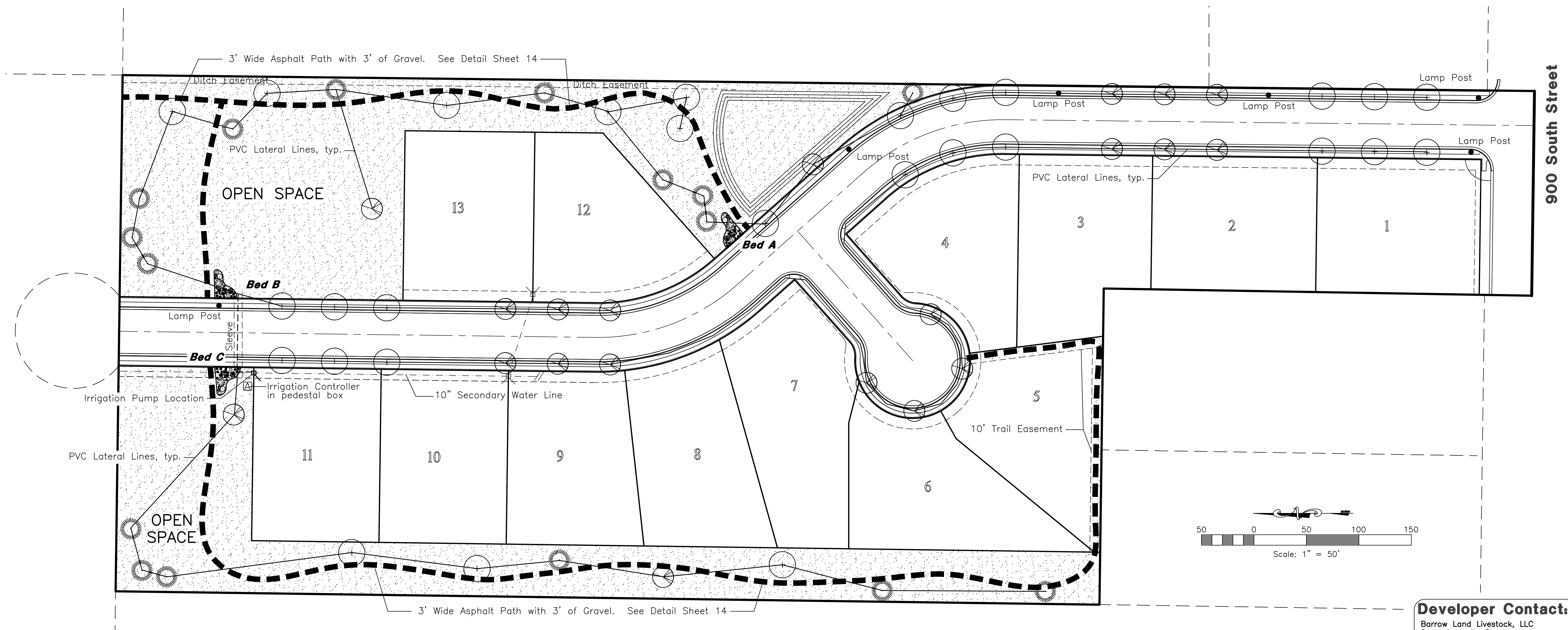
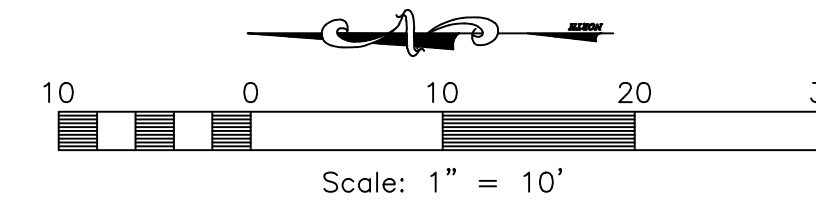
Bed 'A' Detail



Bed 'B' Detail



Bed 'C' Detail



Reeve & Associates, Inc.
 920 CHAMBERS STREET, SUITE 14, OGDEN, UTAH 84403
 TEL: (801) 631-1000 FAX: (801) 631-2666 www.reeve-assoc.com
 LAND PLANNERS • CIVIL ENGINEERS • LAND SURVEYORS
 TRAFFIC ENGINEERS • STRUCTURAL ENGINEERS • LANDSCAPE ARCHITECTS

REVISIONS	DESCRIPTION
DATE	REVIEW
4-3-17 RH	Comments

Vaquero Village Cluster Subdivision Phase 1
 WEBER COUNTY, UTAH

Revised: 1-16-18

Landscaping & Irrigation Plan



Project Info.
 Engineer: J. NATE REEVE
 Drafter: C. KINGSLEY
 Begin Date: 4-4-16
 Name: VAQUERO VILLAGE CLUSTER SUBDIVISION PHASE 1
 Number: 6352-01

Developer Contact:
 Barrow Land Livestock, LLC
 Dean & Justin Barrow
 6835 W. 900 S.
 Ogden, UT. 84404
 (801) 514-8194

1/4/2016 | c:\eeve | G:\6352\01 - Parcel 1003460013\landscape\barrow Landscape.dwg

Plant Table

Quantity	Symbol	Scientific Name	Common Name	Planting Size
28		Acer freemanii 'Jeffersred'	Autumn Blaze Maple	2" cal.
20		Pyrus Calleryana 'Aristocrat'	Aristocrat Flowering Pear	2" cal.
16		Pinus nigra	Austrian Pine	8'-12' B&B

Quantity	Symbol	Scientific Name	Common Name	Planting Size
6		Berberis Thun. Atr. 'Nana'	Dwarf Pygmy Barberry	5 gal.
3		Buddleia davidii	Butterfly Bush	5 gal.
3		Juniperus sabina 'Buffalo'	Buffalo Juniper	5 gal.
3		Rhus aromatica 'Gro-Low'	Gro-Low Sumac	5 gal.

Quantity	Symbol	Scientific Name	Common Name	Planting Size
9		Calamagrostis 'Karl Foerster'	Karl Foerster Grass	2 gal.
18		Hemerocallis 'Stella de Oro'	Stella de Oro Daylily	1 gal.
9		Sedum 'Autumn Joy'	Autumn Joy Sedum	1 gal.

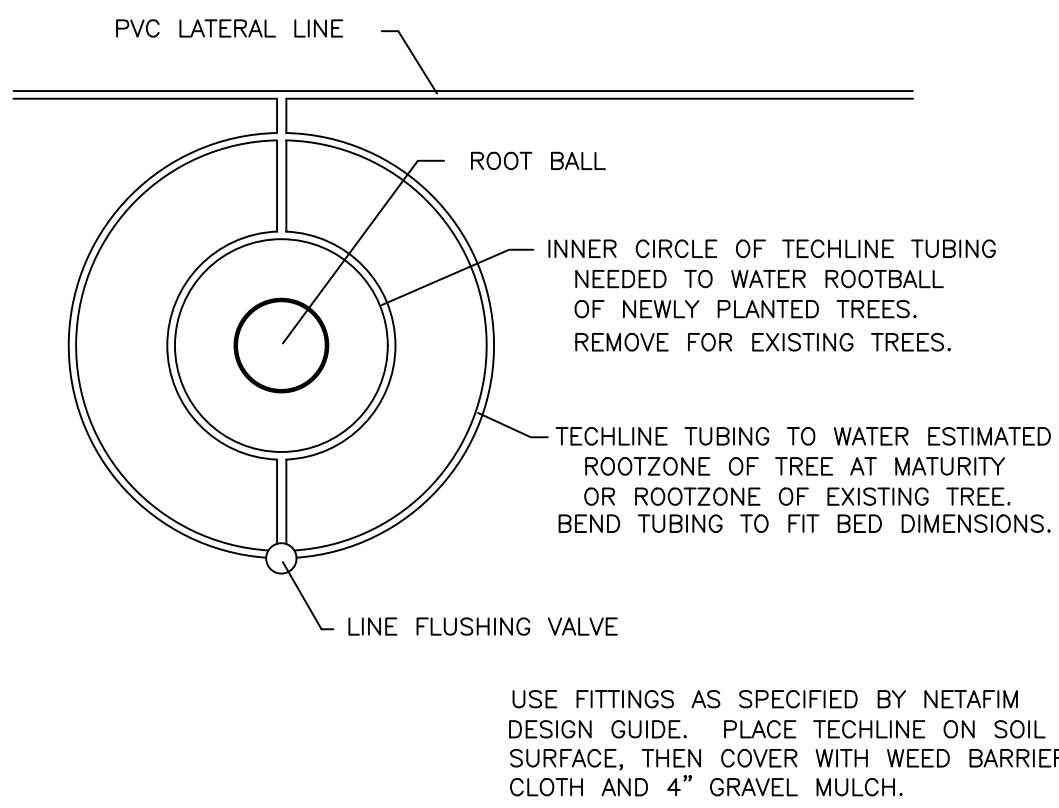
Decorative Boulders

Turf grass shall be seeded with a Kentucky Blue Grass Seed Blend.

IRRIGATION NOTES: All irrigation shall be provided by a private secondary water system. Use PVC lateral lines between trees. Connect to lateral lines with Netafim techline tubing, as shown in detail on Sheet L2. The irrigation system must be installed throughout all open space parcels.

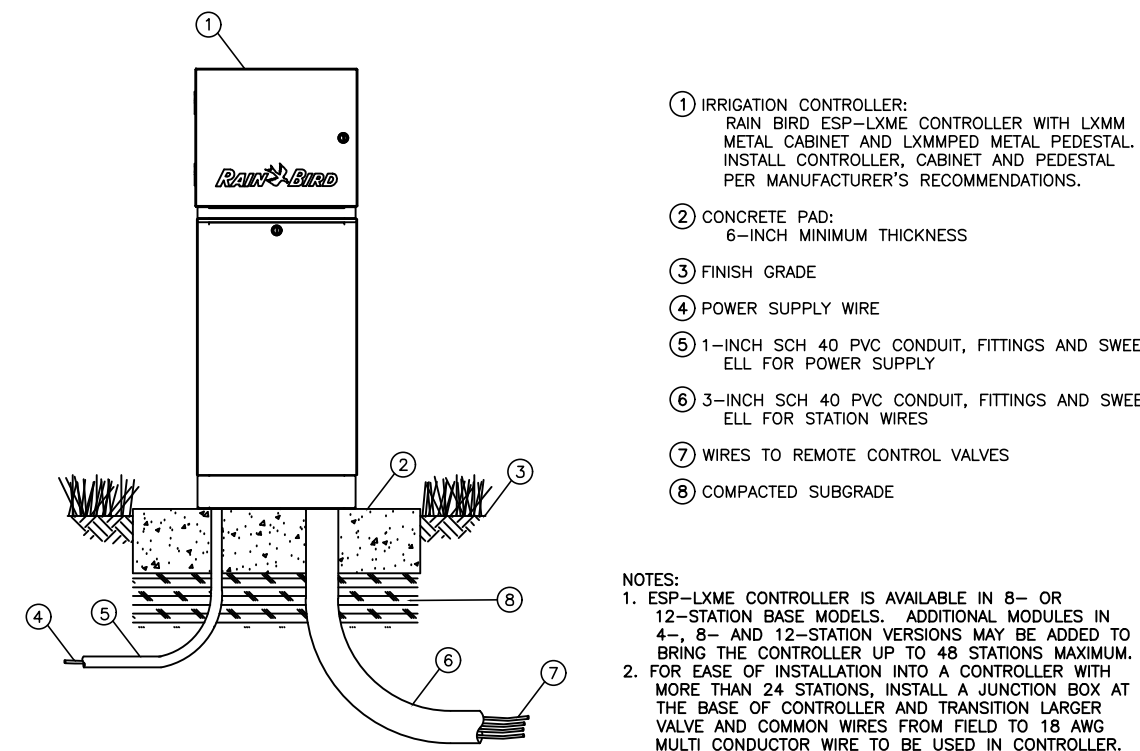
Irrigation Schedule

		LATERAL LINE - CLASS 200 PVC, SIZED AS FOLLOWS 3/4" (0-10 gpm), 1" (10-16 gpm), 1 1/4" (16-26 gpm), 1 1/2" (26-35 gpm) , 2" (35-55 gpm) CAN USE POLY PIPE FOR DRIP IRRIGATION.
	RAINBIRD ESP 12 LXME:120 VAC	INDOOR/OUTDOOR MOUNT BASE CONTROLLER. MOUNT ON OUTDOOR PEDESTAL.
		SLEEVEING - SCHEDULE 40 PVC, 2 SIZES GREATER THAN INTERIOR PIPE SLEEVEING USED WHENEVER IRRIGATION IS PLACED UNDER PAVED AREAS.
		1-1/2" MAINLINE - SCHEDULE 40 PVC



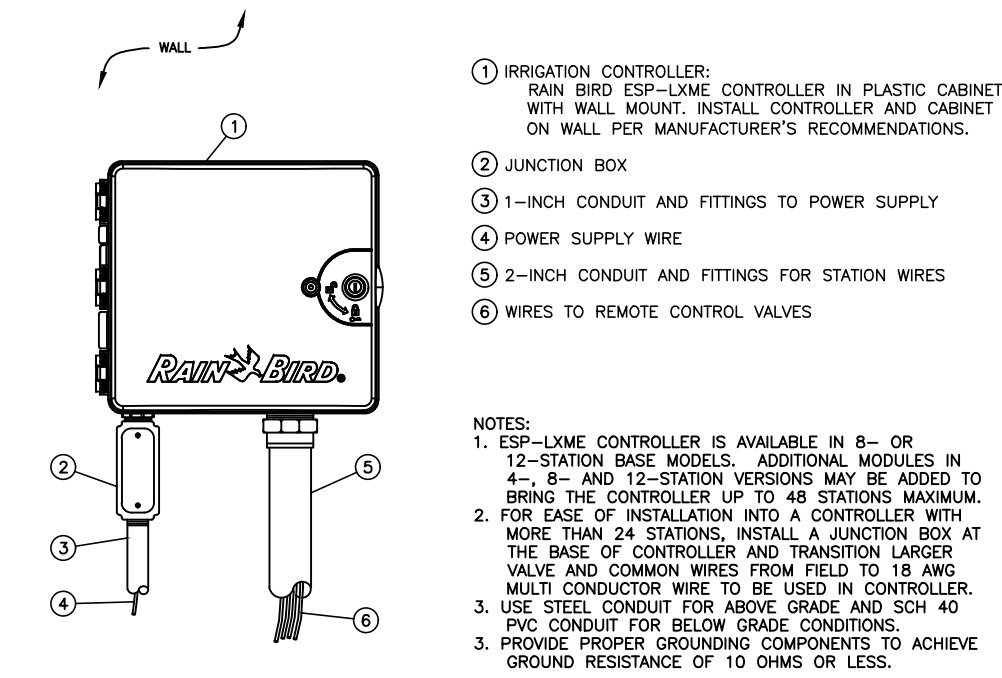
NETAFIM DETAIL

SCALE: NTS



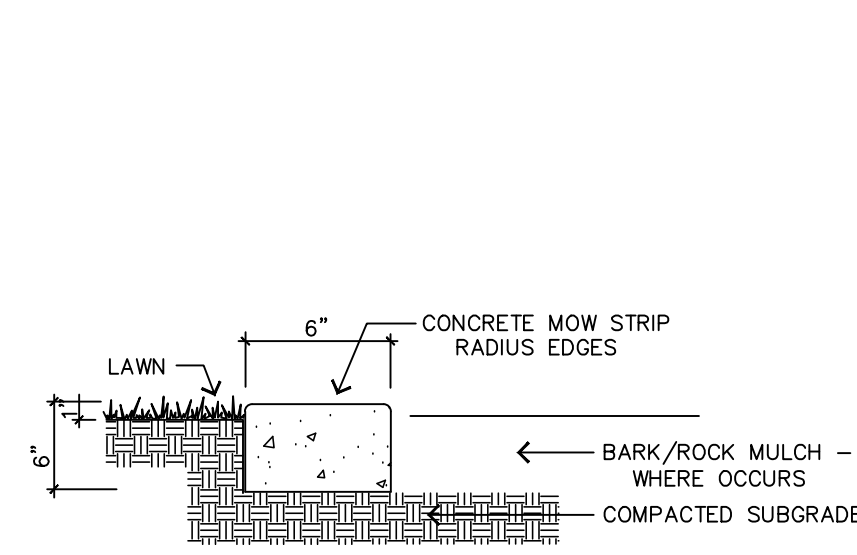
ESP-LXME CONTROLLER

N.T.S. IN METAL PEDESTAL FOR OUTSIDE MOUNT



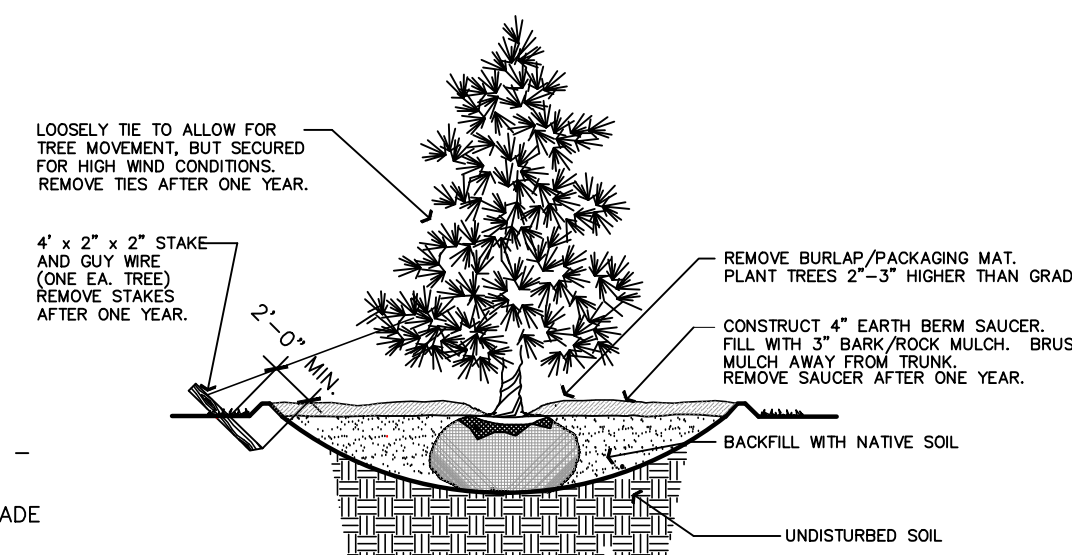
ESP-LXME CONTROLLER

N.T.S. IN PLASTIC CABINET FOR OUTSIDE MOUNT



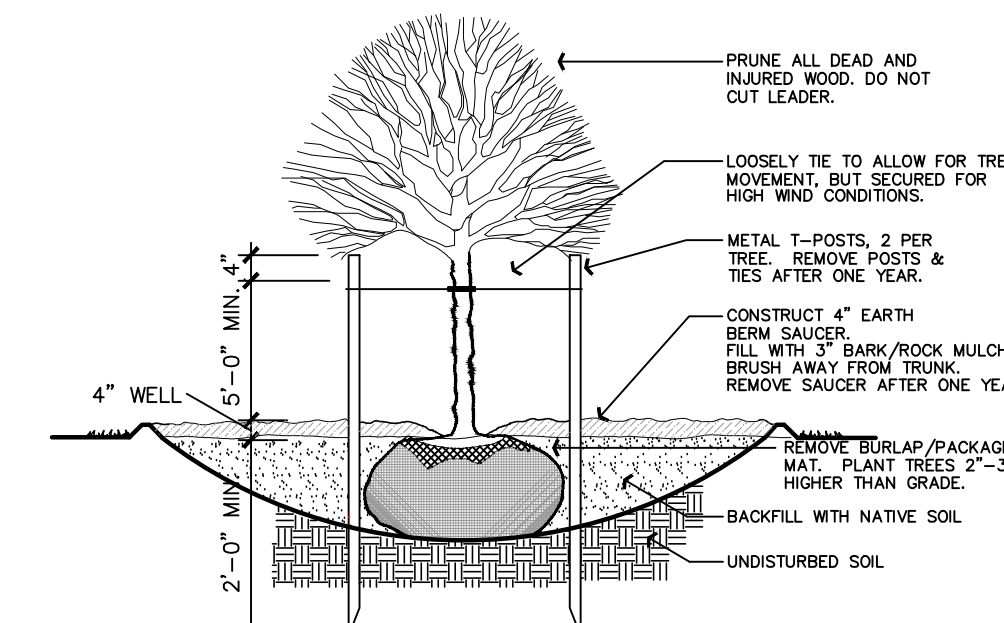
CONCRETE MOW STRIP

SCALE: NOT TO SCALE



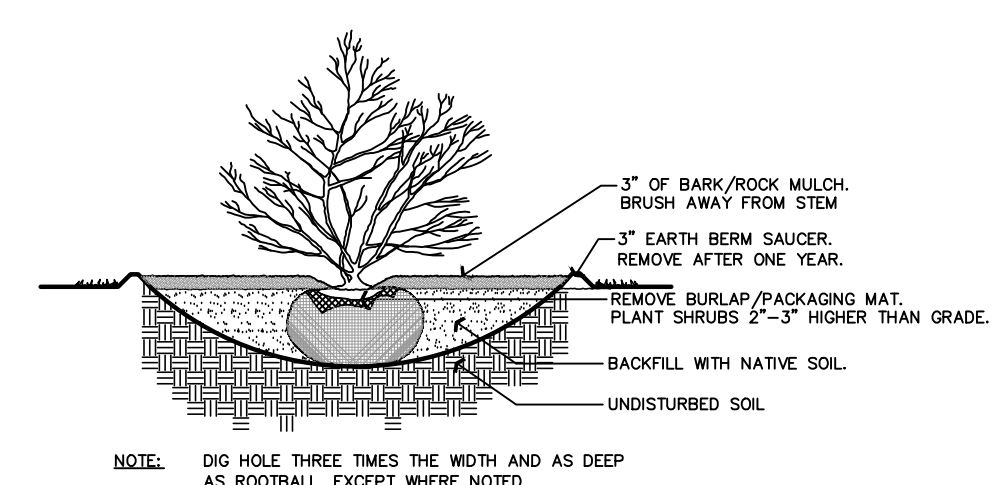
CONIFEROUS TREE PLANTING

SCALE: NOT TO SCALE



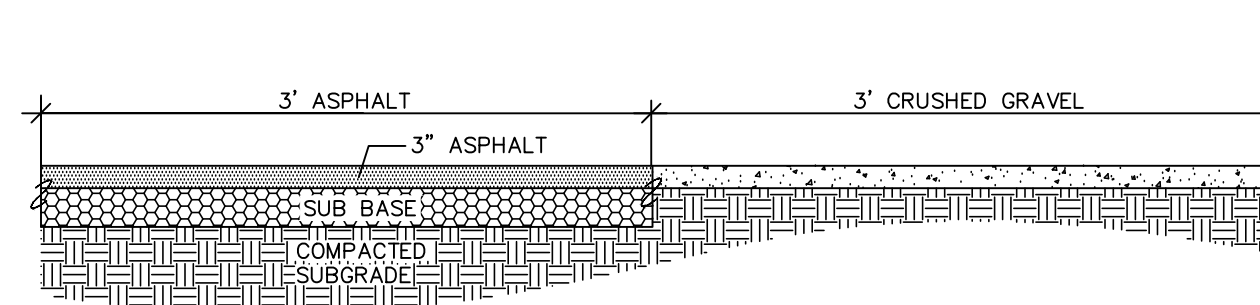
DECIDUOUS TREE PLANTING

SCALE: NOT TO SCALE



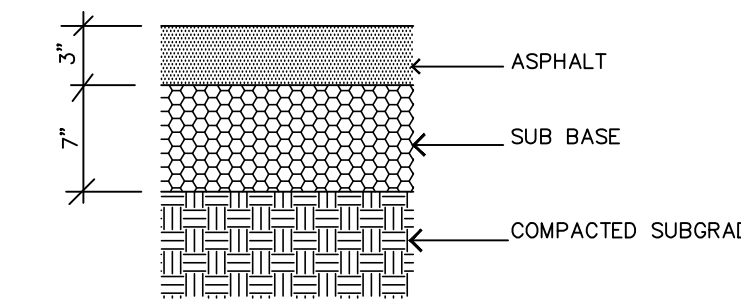
SHRUB PLANTING

SCALE: NOT TO SCALE



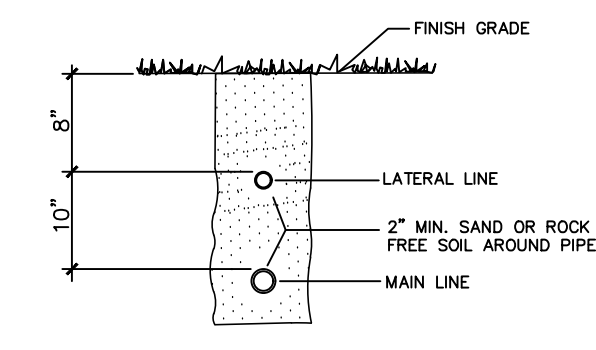
6' WIDE ASPHALT/GRAVEL PATH

N.T.S.



ASPHALT PAVING SECTION

N.T.S.



TRENCH SECTION

N.T.S.

Reeve & Associates, Inc.
 920 CHAMBERS STREET, SUITE 14, OGDEN, UTAH 84403
 TEL: (801) 621-1100 FAX: (801) 621-2666 www.reeve-associ.com
 LAND PLANNERS • CIVIL ENGINEERS • LAND SURVEYORS
 TRAFFIC ENGINEERS • STRUCTURAL ENGINEERS • LANDSCAPE ARCHITECTS

REVISIONS	DATE	DESCRIPTION
4-3-17	RH	Review Comments

Vaquero Village Cluster Subdivision Phase 1
 WEBER COUNTY, UTAH

Landscape & Irrigation Details

REGISTERED PROFESSIONAL ENGINEER
 375328
 J. NATE REEVE
 4/28/17
 STATE OF UTAH

Project Info.
 Engineer: J. NATE REEVE
 Drafter: C. KINGSLEY
 Begin Date: 4-4-16
 Name: VAQUERO VILLAGE CLUSTER SUBDIVISION PHASE 1
 Number: 6352-01

Developer Contact:
 Barrow Land Livestock, LLC
 Dean & Justin Barrow
 6835 W. 900 S.
 Ogden, UT. 84404
 (801) 514-8194

Sheet **14** of 14
 14 Sheets

1/4/2016 | c:\cave | G:\6352\01 - Parcel | 100346001\3\landscape\Barrow Landscape.dwg