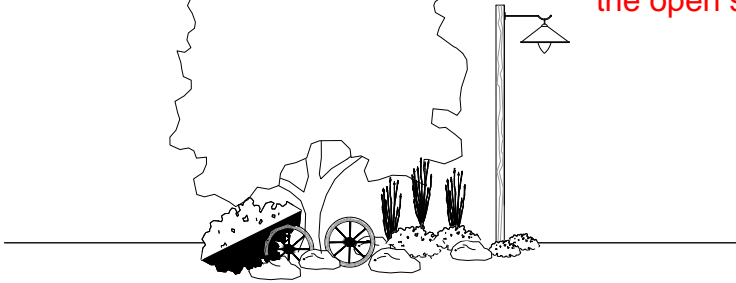


# Vaquero Village

What type of native grasses are you proposing in the open spaces?



## Plant Table

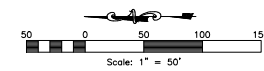
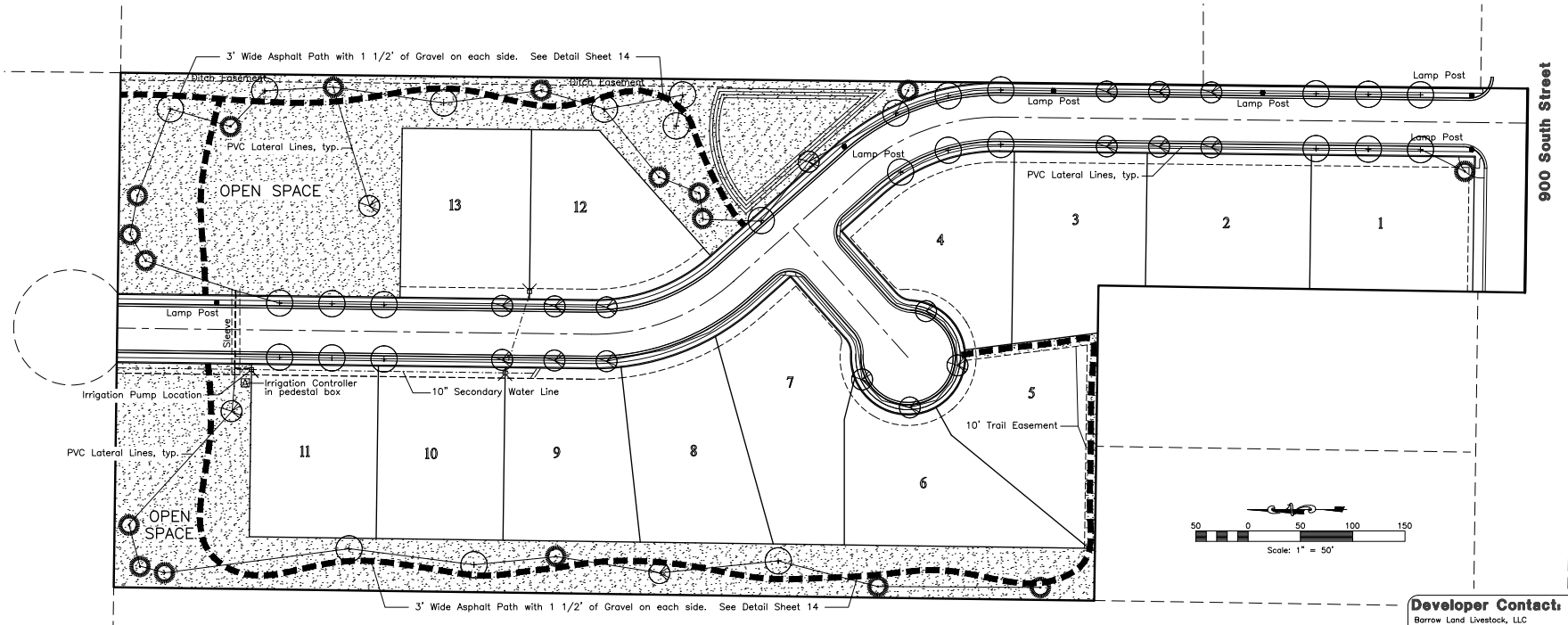
Quantity	Symbol	Scientific Name	Common Name	Planting Size
30	+	Acer freemanii 'Jeffersred'	Autumn Blaze Maple	2" cal.
20	⊗	Malus 'Prairie Fire'	Prairie Fire Crabapple	2" cal.
14	⊙	Pinus nigra	Austrian Pine	8'-12" B&B

Seed with native grasses.

IRRIGATION NOTES: All irrigation shall be provided by a private secondary water system. Use PVC lateral lines between trees. Connect to lateral lines with Netofim techline tubing, as shown in detail on Sheet L2.

## Irrigation Schedule

→	LATERAL LINE - CLASS 200 PVC, SIZED AS FOLLOWS 3/4" (0-10 gpm), 1" (10-16 gpm), 1 1/4" (16-26 gpm), 1 1/2" (26-35 gpm), 2" (35-55 gpm) CAN USE POLY PIPE FOR DRIP IRRIGATION.
⊗	RAINBIRD ESP 12 LXME:120 VAC INDOOR/OUTDOOR MOUNT BASE CONTROLLER. MOUNT ON OUTDOOR PEDESTAL.
---	SLEEVING - SCHEDULE 40 PVC, 2 SIZES GREATER THAN INTERIOR PIPE SLEEVING USED WHENEVER IRRIGATION IS PLACED UNDER PAVED AREAS.
---	1-1/2" MAINLINE - SCHEDULE 40 PVC



**Developer Contact:**  
Barrow Land Livestock, LLC  
Dean & Justin Barrow  
6835 W. 900 S.  
Ogden, UT 84404  
(801) 514-8194

REEVE & ASSOCIATES, INC. • SOLUTIONS YOU CAN BUILD ON™  
 920 CHAMBERS STREET #14, OGDEN, UTAH 84403  
 TEL: 801.514.8194 FAX: 801.514.8195  
 WWW.REEVE-ASSOCIATES.COM

REVISIONS  
 DATE DESCRIPTION  
 4-3-17 For Review Comments

Revised: 4-28-17

**Vaquero Village Cluster Subdivision**  
**Phase 1**  
 WEBER COUNTY, UTAH

**Landscape & Irrigation Plan**

REEVE & ASSOCIATES, INC. • SOLUTIONS YOU CAN BUILD ON™  
 920 CHAMBERS STREET #14, OGDEN, UTAH 84403  
 TEL: 801.514.8194 FAX: 801.514.8195  
 WWW.REEVE-ASSOCIATES.COM

**Project Info.**  
 Engineer: **NATE REYE**  
 Drafter: **C. KINGSLEY**  
 Begin Date: **1-4-16**  
 Name: **Vaquero Village Cluster Subdivision Phase 1**  
 Number: **6352-01**

13

Sheets

14

Sheets

1/4/2016 J. L. L. 10:45:03 AM - Project: 100336023 - Vaquero Village Cluster Subdivision - Landscape & Irrigation

THESE PLANS AND SPECIFICATIONS ARE THE PROPERTY OF REEVE & ASSOCIATES, INC., 920 CHAMBERS STREET #14, OGDEN, UTAH 84403, AND SHALL NOT BE PHOTOCOPIED, RE-DRAWN, OR USED ON ANY PROJECT OTHER THAN THE PROJECT SPECIFICALLY DESIGNED FOR, WITHOUT THEIR WRITTEN PERMISSION. THE OWNERS AND ENGINEERS OF REEVE & ASSOCIATES, INC. DISCLAIM ANY LIABILITY FOR ANY CHANGES OR MODIFICATIONS MADE TO THESE PLANS OR THE DESIGN THEREON WITHOUT THEIR CONSENT.