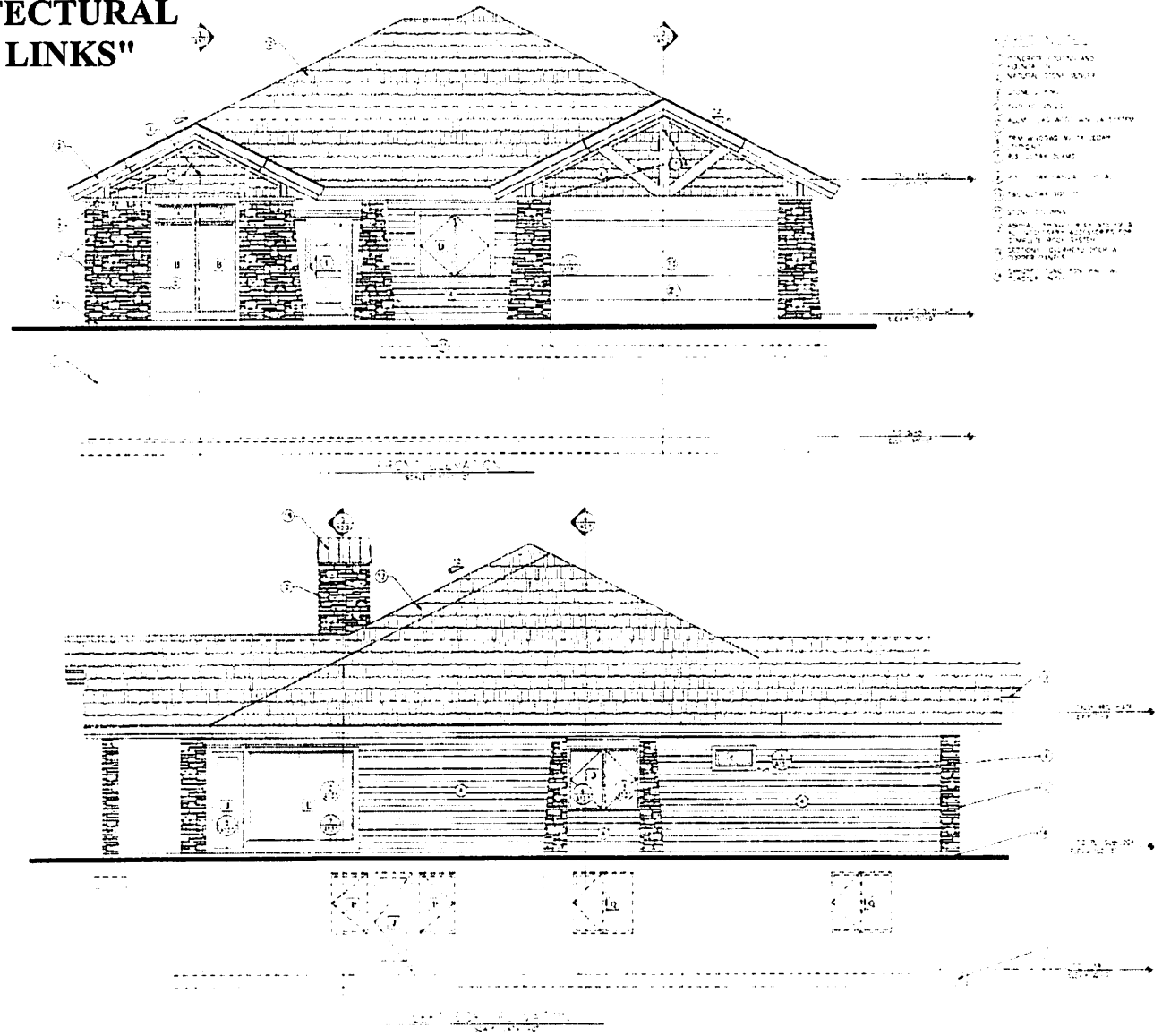
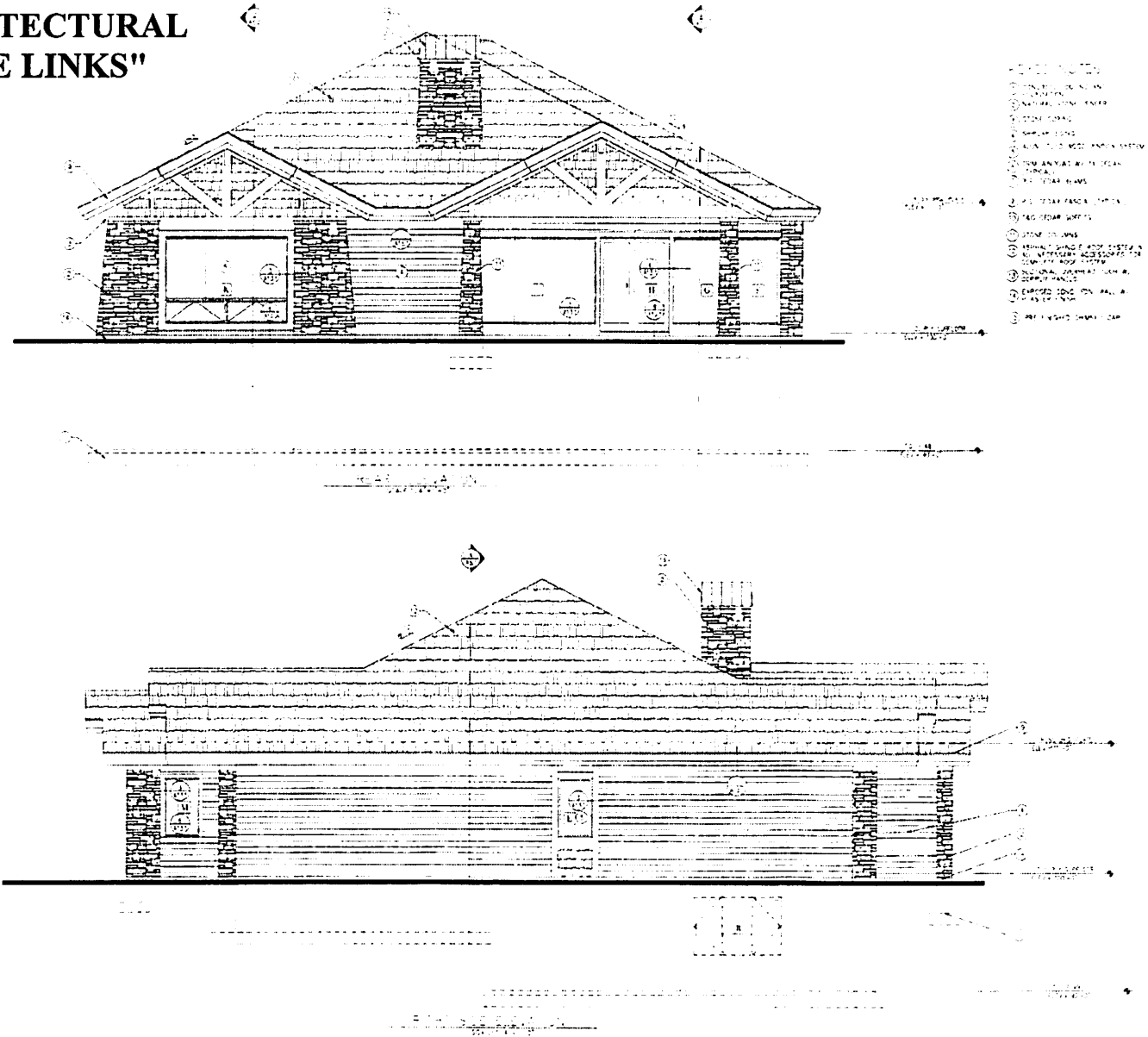


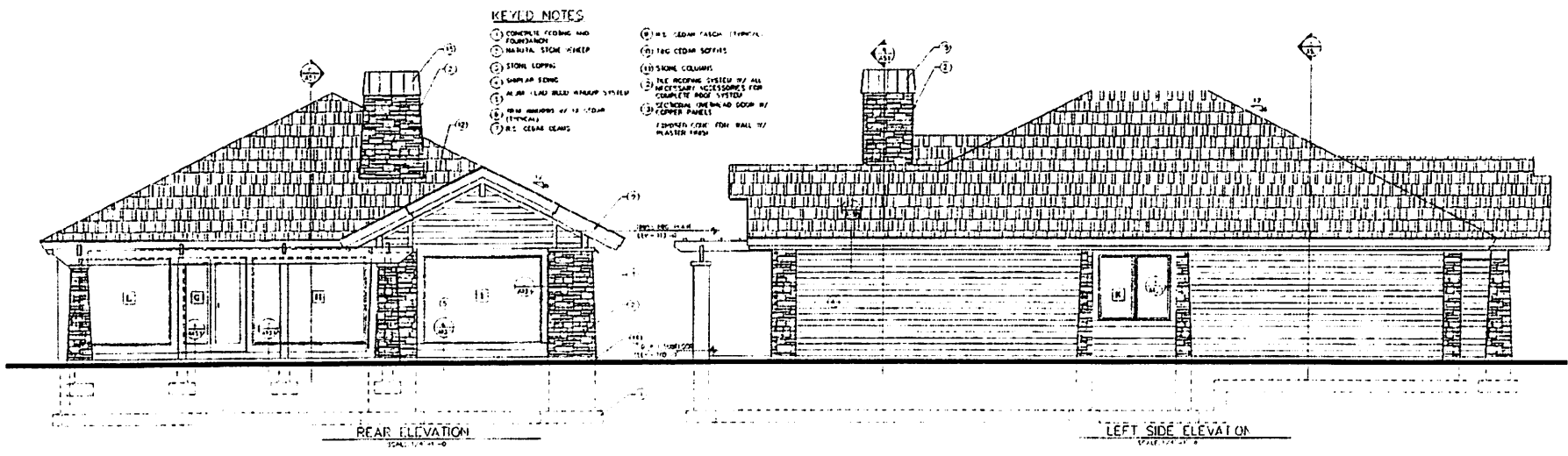
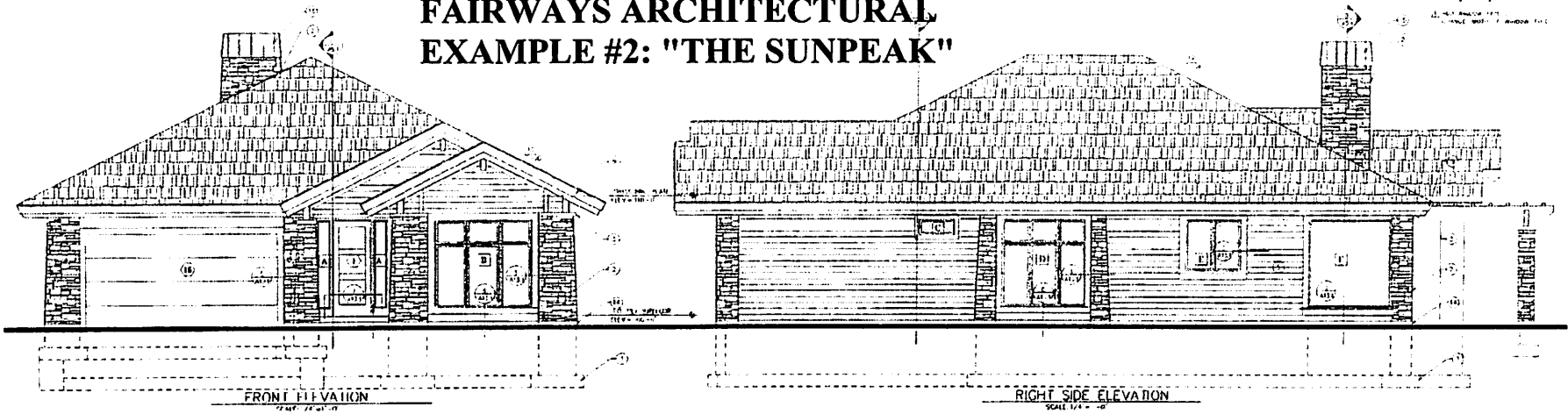
FAIRWAYS ARCHITECTURAL EXAMPLE #1: "THE LINKS"



FAIRWAYS ARCHITECTURAL EXAMPLE #1: "THE LINKS"



FAIRWAYS ARCHITECTURAL EXAMPLE #2: "THE SUNPEAK"



- KEYED NOTES**
- (1) CONCRETE FOOTING AND FOUNDATION
 - (2) MARBLE STONE KICKER
 - (3) STONE SILLING
 - (4) SHIP LAP SIDING
 - (5) ALUM LEAD BILD KICKAP SYSTEM
 - (6) 2"X4 BRIMBERS AT 12" O.C.
 - (7) 1/2" CEDAR CEAPS
 - (8) 1/2" CEDAR FASCIA (TYPICAL)
 - (9) 1"X6 CEDAR SOFFITS
 - (10) 1"X6 SHINGE COLUMNS
 - (11) INE ROOFING SYSTEM BY ALL NECESSARY ACCESSORIES FOR COMPLETE ROOF SYSTEM
 - (12) 2"X6 SHINGE (PERMANENT DOOR BY TYPICAL)
 - (13) FINISHED CEILING WITH PLASTER 1/2"X6