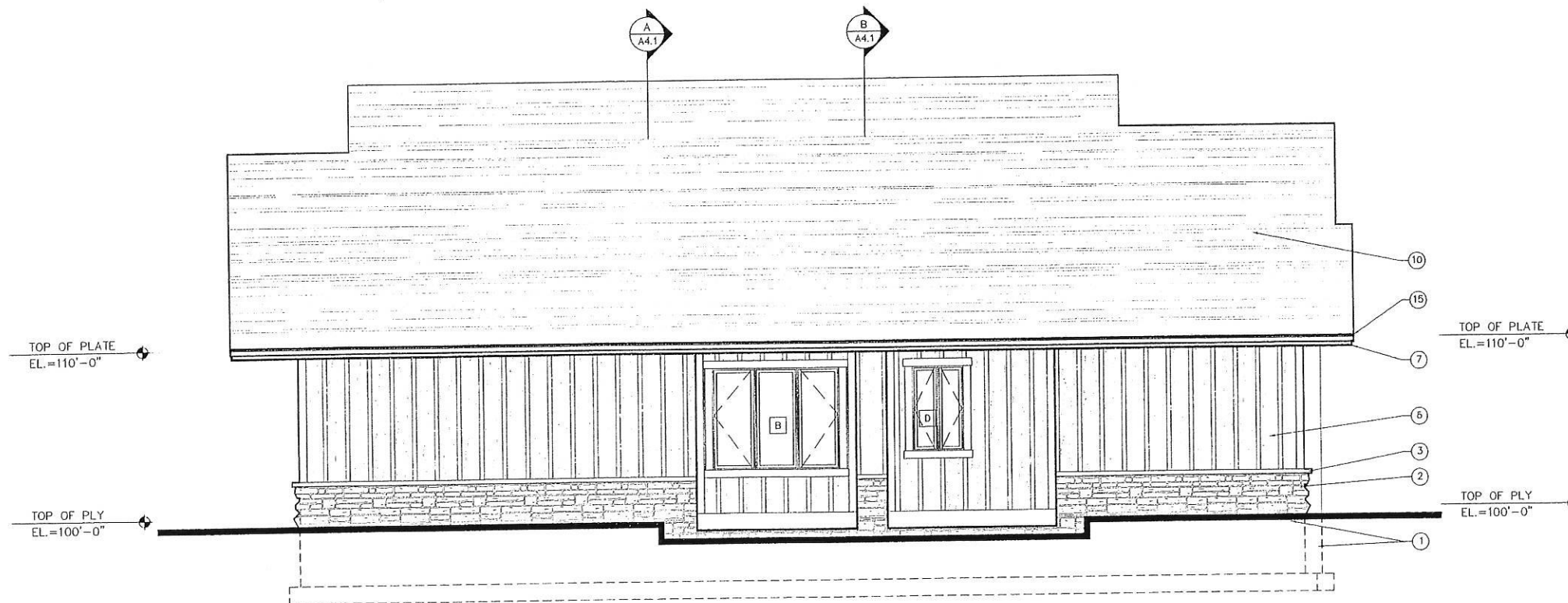


FRONT EXTERIOR ELEVATION
SCALE: 1/4" = 1'-0" 1

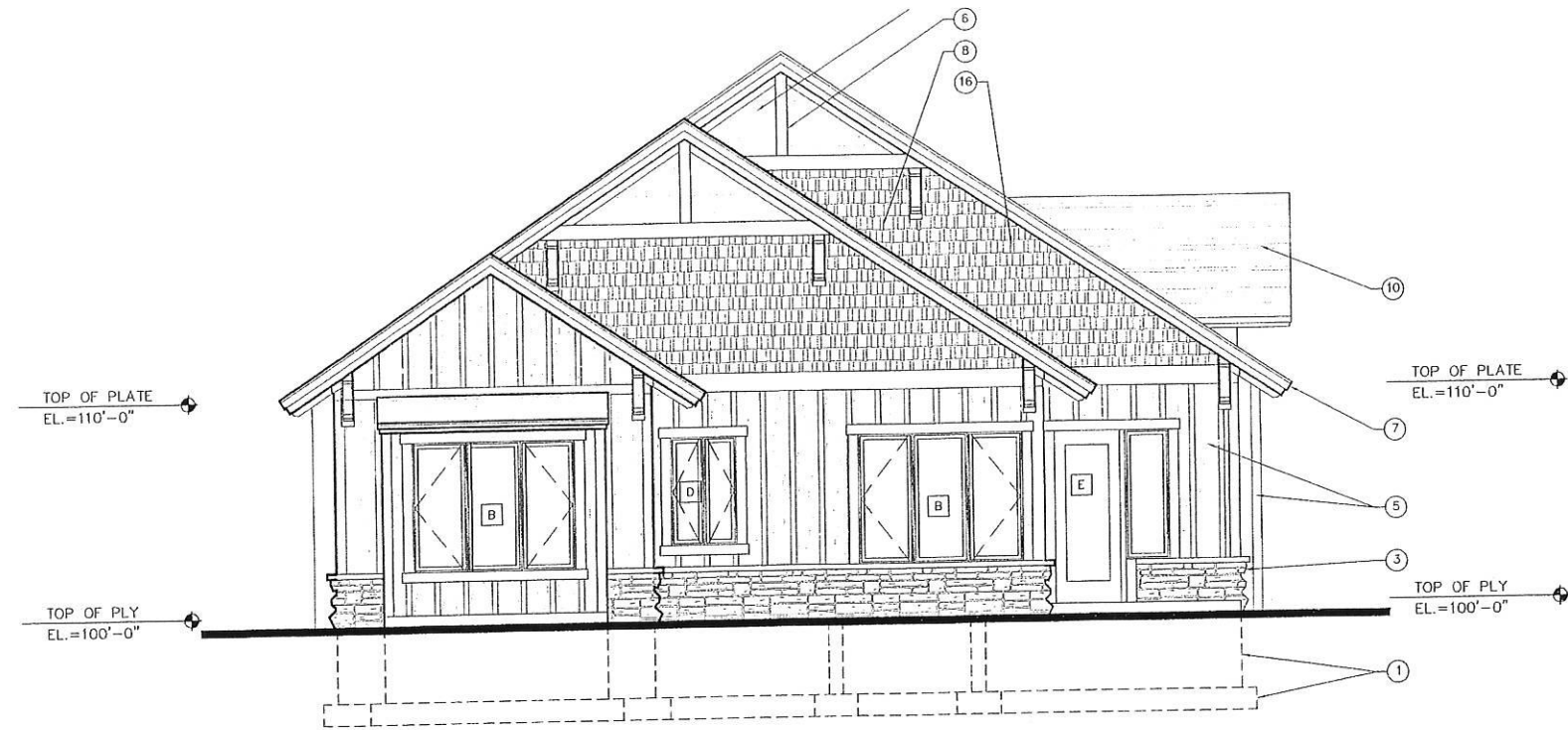
TYPICAL EXTERIOR NOTES

- ① CONCRETE FOUNDATION
- ② STONE VENEER
- ③ STONE WATER TABLE
- ④ STUCCO SYSTEM
- ⑤ CEDAR FACED PLY. 30ARDS WITH 1X3 CEDAR BATTEN
- ⑥ R.S. TIMBER BRACKET
- ⑦ 2X8 RIM W/ 1X4 CEDAR APPLIED AT FASICA.
- ⑧ ASPHALT SHINGLES AT WINDOW BUMP-OUT
- ⑨ CEDAR TRIM
- ⑩ ASPHALT SHINGLE ROOF SYSTEM
- ⑪ PRE FINISHED GABLE VENTS
- ⑫ SECTIONAL DOOR W/ APPLIED TRIM
- ⑬ PRE - FINISHED METAL CHIMNEY CAP
- ⑭ WOOD COLUMN
- ⑮ PRE FINISHED FLASHING

TRAPPERS RIDGE ARCHITECTURAL EXAMPLE #3: "THE SADDLEBACK"



SIDE EXTERIOR ELEVATION
SCALE: 1/4" = 1'-0" 2



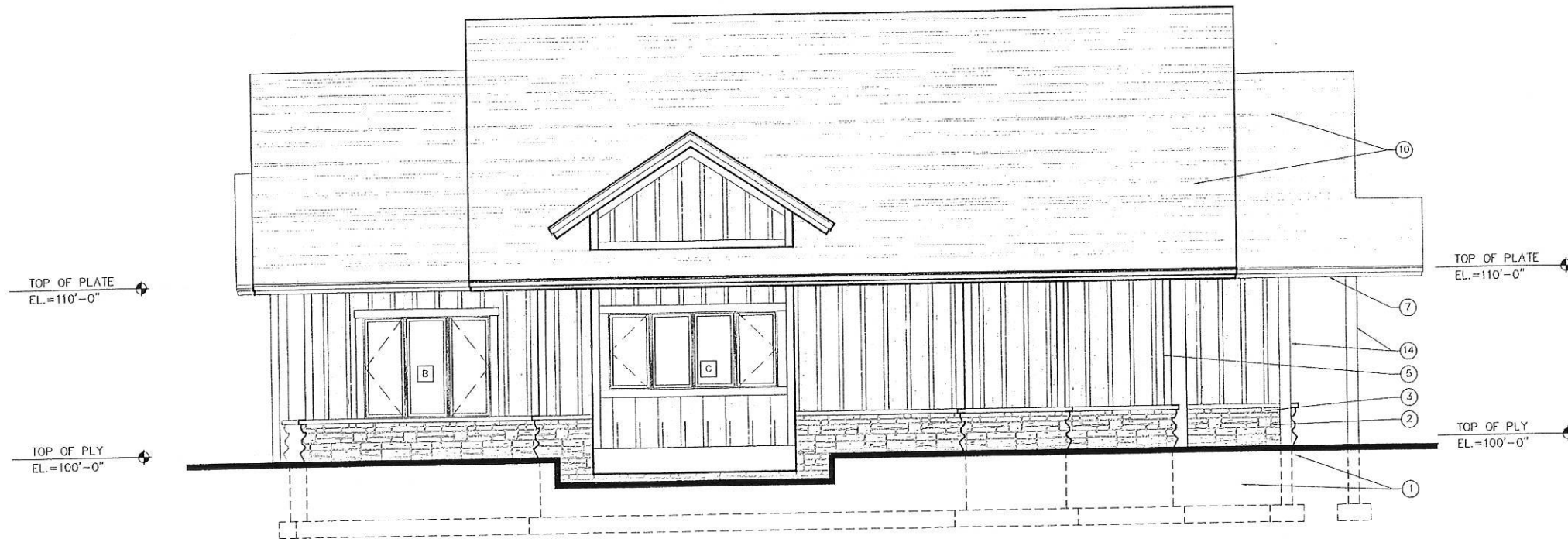
REAR EXTERIOR ELEVATION
SCALE: 1/4" = 1'-0"

3

TRAPPERS RIDGE ARCHITECTURAL EXAMPLE #3: "THE SADDLEBACK"

TYPICAL EXTERIOR NOTES

- ① CONCRETE FOUNDATION
- ② STONE VENEER
- ③ STONE WATER TABLE
- ④ STUCCO SYSTEM
- ⑤ CEDAR FACED PLY. BOARDS WITH 1X3 CEDAR BATTEN
- ⑥ R.S. TIMBER BRACKET
- ⑦ 2X8 RIM W/ 1X4 CEDAR APPLIED AT FASICA.
- ⑧ ASPHALT SHINGLES AT WINDOW BUMP-OUT
- ⑨ CEDAR TRIM
- ⑩ ASPHALT SHINGLE ROOF SYSTEM
- ⑪ PRE FINISHED GABLE VENTS
- ⑫ SECTIONAL DOOR W/ APPLIED TRIM
- ⑬ PRE - FINISHED METAL CHIMNEY CAP
- ⑭ WOOD COLUMN
- ⑮ PRE FINISHED FLASHING



SIDE EXTERIOR ELEVATION
SCALE: 1/4" = 1'-0"

4