

**TYPICAL EXTERIOR NOTES**

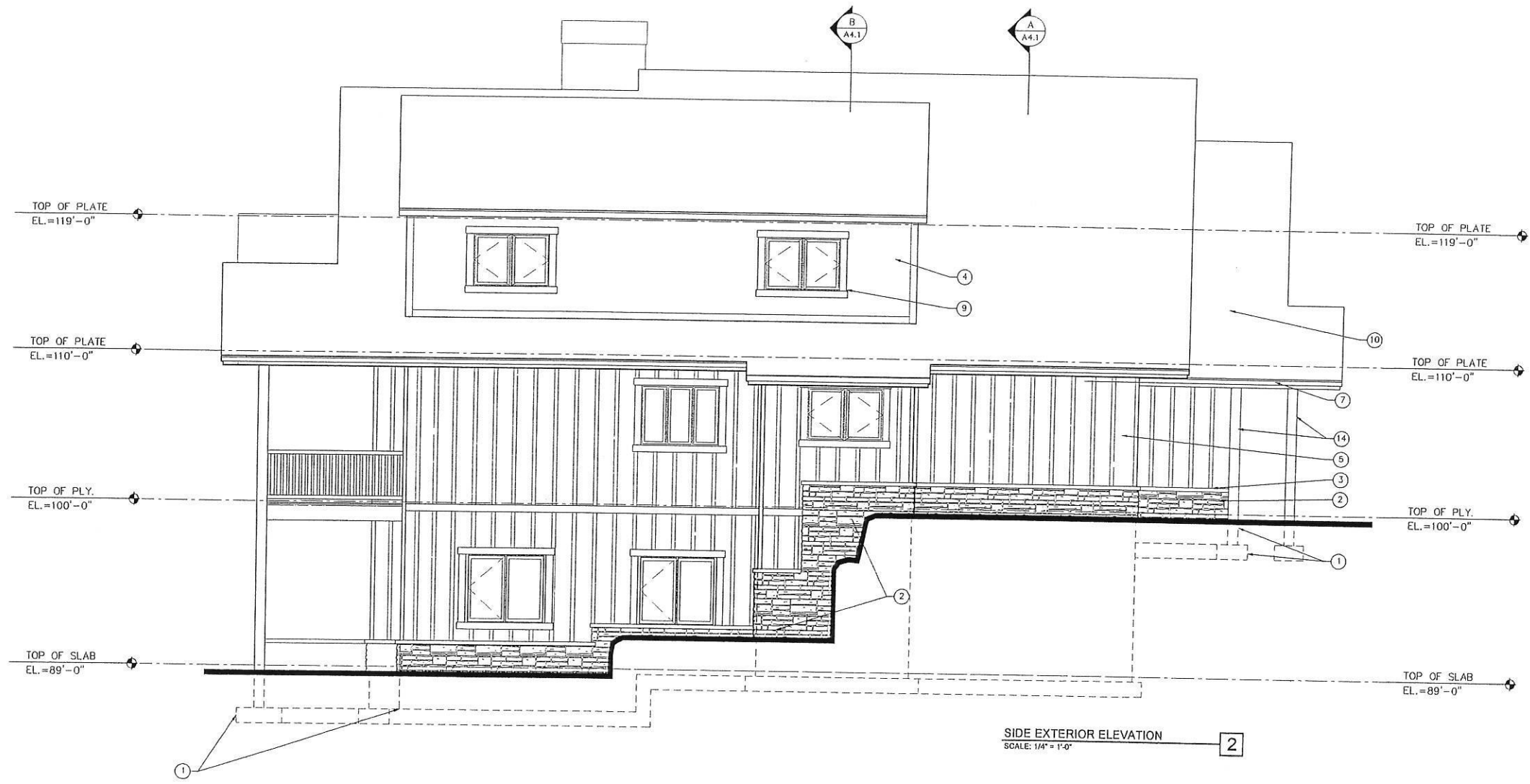
- ① CONCRETE FOUNDATION
- ② STONE VENEER
- ③ STONE WATER TABLE
- ④ LAP SIDING WITH CORNER BOARDS
- ⑤ BOARD AND BATTEN SIDING SYSTEM
- ⑥ R.S. TIMBER BRACKET
- ⑦ 2X10 RIM W/ 1X8 CEDAR APPLIED AT FASICA.
- ⑧ ASPHALT SHINGLES AT WINDOW BUMP-OUT
- ⑨ CEDAR TRIM
- ⑩ ASPHALT SHINGLE ROOF SYSTEM
- ⑪ PRE FINISHED TURTLE VENTS @ ROOF
- ⑫ SECTIONAL DOOR W/ APPLIED TRIM
- ⑬ PRE - FINISHED METAL CHIMNEY CAP
- ⑭ WOOD COLUMN
- ⑮ PRE FINISHED FLASHING
- ⑯ SHINGLE SIDING SYSTEM
- ⑰ DECORATIVE GABLE TRUSS

FRONT EXTERIOR ELEVATION  
SCALE: 1/4" = 1'-0" 1

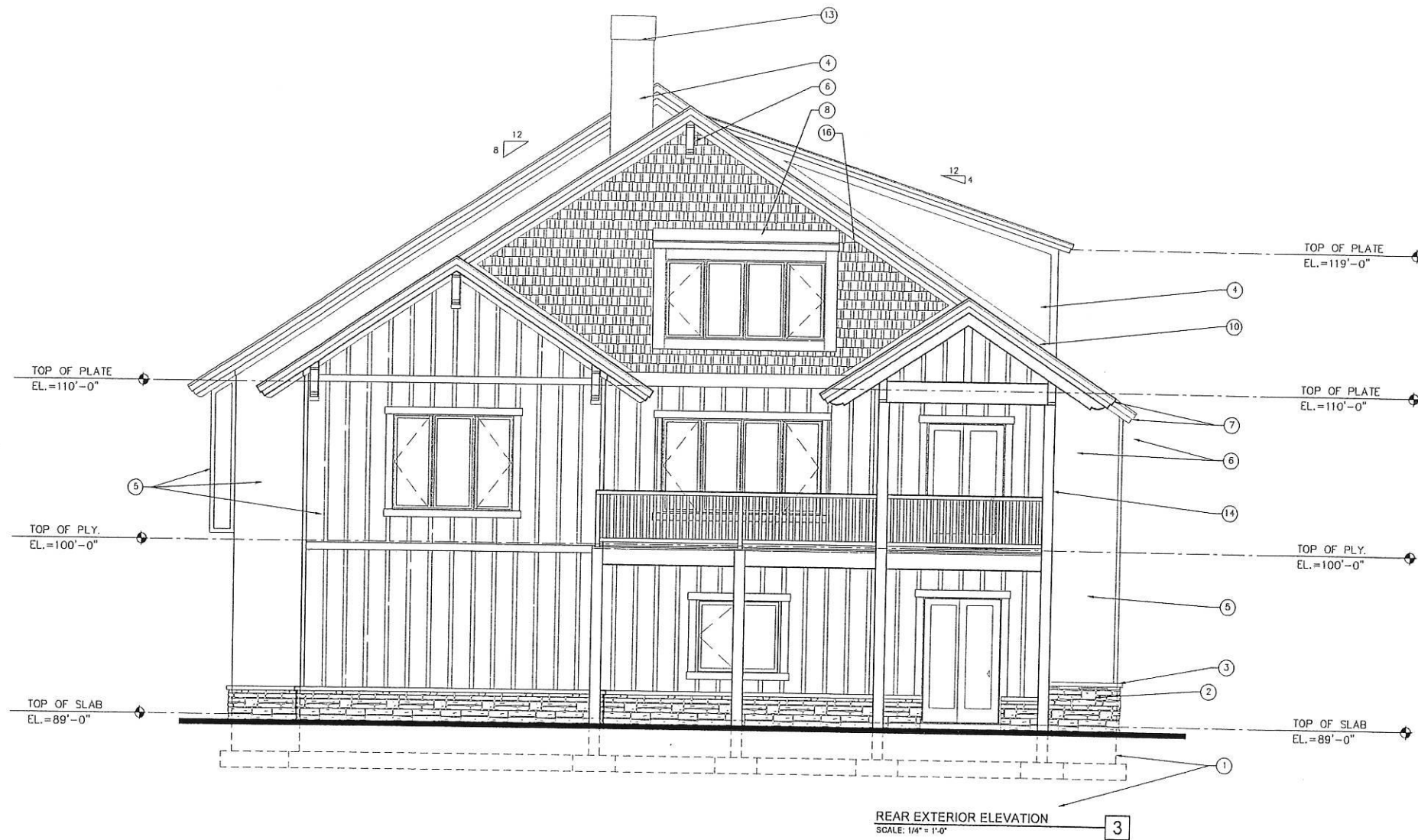
**TRAPPERS RIDGE ARCHITECTURAL  
EXAMPLE #2: "THE BIG HORN"**

TYPICAL EXTERIOR NOTES

- ① CONCRETE FOUNDATION
- ② STONE VENEER
- ③ STONE WATER TABLE
- ④ LAP SIDING WITH CORNER BOARDS
- ⑤ BOARD AND BATTEN SIDING SYSTEM
- ⑥ R.S. TIMBER BRACKET
- ⑦ 2X10 RIM W/ 1X6 CEDAR APPLIED AT FASICA.
- ⑧ ASPHALT SHINGLES AT WINDOW BUMP-OUT
- ⑨ CEDAR TRIM
- ⑩ ASPHALT SHINGLE ROOF SYSTEM
- ⑪ PRE FINISHED TURTLE VENTS @ ROOF
- ⑫ SECTIONAL DOOR W/ APPLIED TRIM
- ⑬ PRE - FINISHED METAL CHIMNEY CAP
- ⑭ WOOD COLUMN
- ⑮ PRE FINISHED FLASHING
- ⑯ SHINGLE SIDING SYSTEM
- ⑰ DECORATIVE GABLE TRUSS



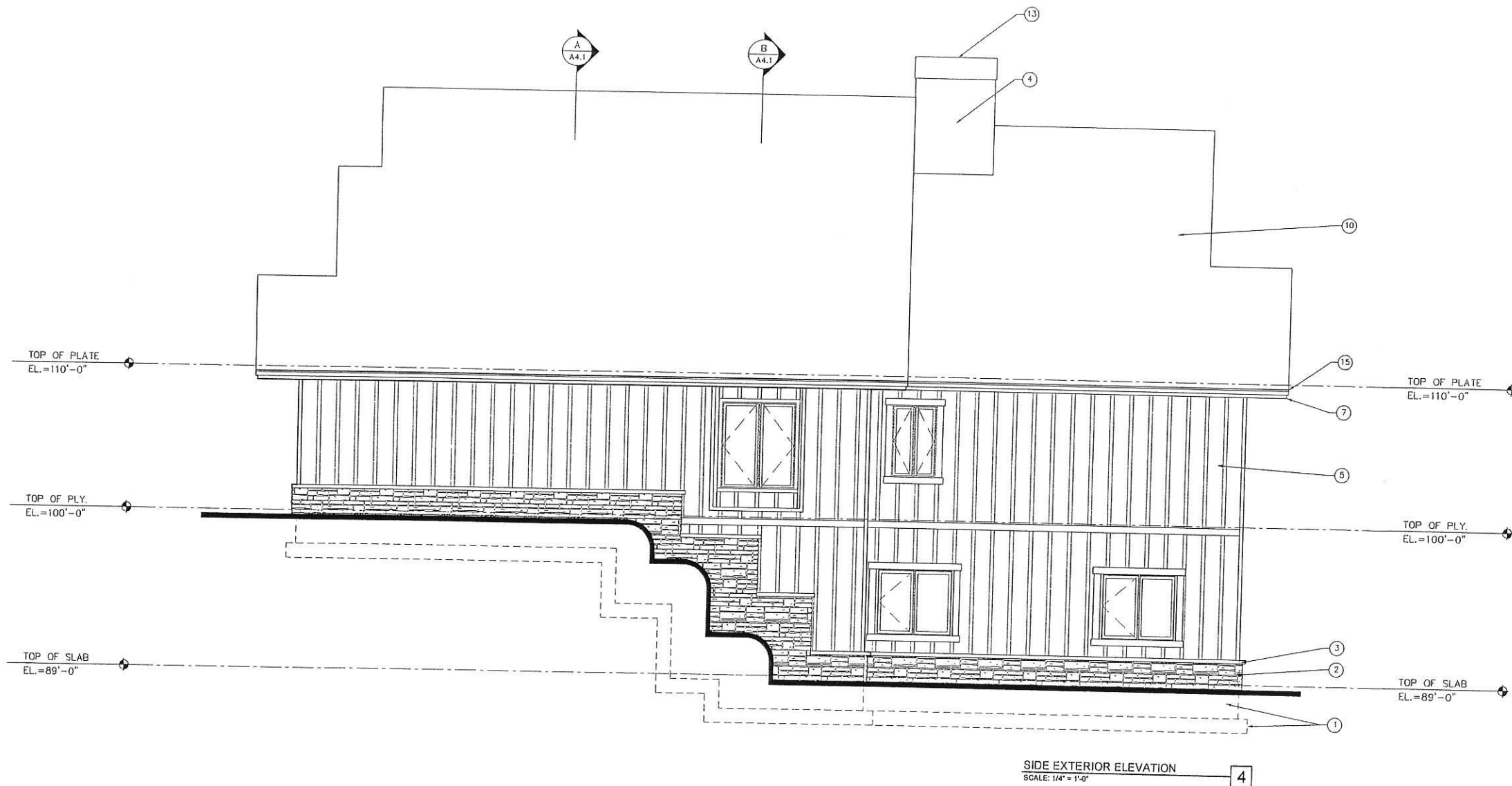
**TRAPPERS RIDGE ARCHITECTURAL  
EXAMPLE #2: "THE BIG HORN"**



**TYPICAL EXTERIOR NOTES**

- ① CONCRETE FOUNDATION
- ② STONE VENEER
- ③ STONE WATER TABLE
- ④ LAP SIDING WITH CORNER BOARDS
- ⑤ BOARD AND BATTEN SIDING SYSTEM
- ⑥ R.S. TIMBER BRACKET
- ⑦ 2X10 RIM W/ 1X8 CEDAR APPLIED AT FASICA.
- ⑧ ASPHALT SHINGLES AT WINDOW BUMP-OUT
- ⑨ CEDAR TRIM
- ⑩ ASPHALT SHINGLE ROOF SYSTEM
- ⑪ PRE FINISHED TURTLE VENTS @ ROOF
- ⑫ SECTIONAL DOOR W/ APPLIED TRIM
- ⑬ PRE - FINISHED METAL CHIMNEY CAP
- ⑭ WOOD COLUMN
- ⑮ PRE FINISHED FLASHING
- ⑯ SHINGLE SIDING SYSTEM
- ⑰ DECORATIVE GABLE TRUSS

**TRAPPERS RIDGE ARCHITECTURAL  
EXAMPLE #2: "THE BIG HORN"**



**TYPICAL EXTERIOR NOTES**

- ① CONCRETE FOUNDATION
- ② STONE VENEER
- ③ STONE WATER TABLE
- ④ LAP SIDING WITH CORNER BOARDS
- ⑤ BOARD AND BATTEN SIDING SYSTEM
- ⑥ R.S. TIMBER BRACKET
- ⑦ 2X10 RIM W/ 1X8 CEDAR APPLIED AT FASICA
- ⑧ ASPHALT SHINGLES AT WINDOW BUMP-OUT
- ⑨ CEDAR TRIM
- ⑩ ASPHALT SHINGLE ROOF SYSTEM
- ⑪ PRE FINISHED TURTLE VENTS @ ROOF
- ⑫ SECTIONAL DOOR W/ APPLIED TRIM
- ⑬ PRE - FINISHED METAL CHIMNEY CAP
- ⑭ WOOD COLUMN
- ⑮ PRE FINISHED FLASHING
- ⑯ SHINGLE SIDING SYSTEM
- ⑰ DECORATIVE GABLE TRUSS

**TRAPPERS RIDGE ARCHITECTURAL  
EXAMPLE #2: "THE BIG HORN"**