



RMP POLE REPLACEMENT
 DRAWN BY: TLH (COMLINK LS)
 CHECKED BY: ROCKY SCHUTJER
 DATE: 2-16-2011

REVISIONS		
DATE	DESCRIPTION	INITIALS
2-16-2011	ZONING DRAWINGS	TLH
2-28-2011	REVISIONS	TLH

RMP POLE REPLACEMENT
 4700 SOUTH GLASMANN WAY
 OGDEN, UTAH 84403
 SLO1743A

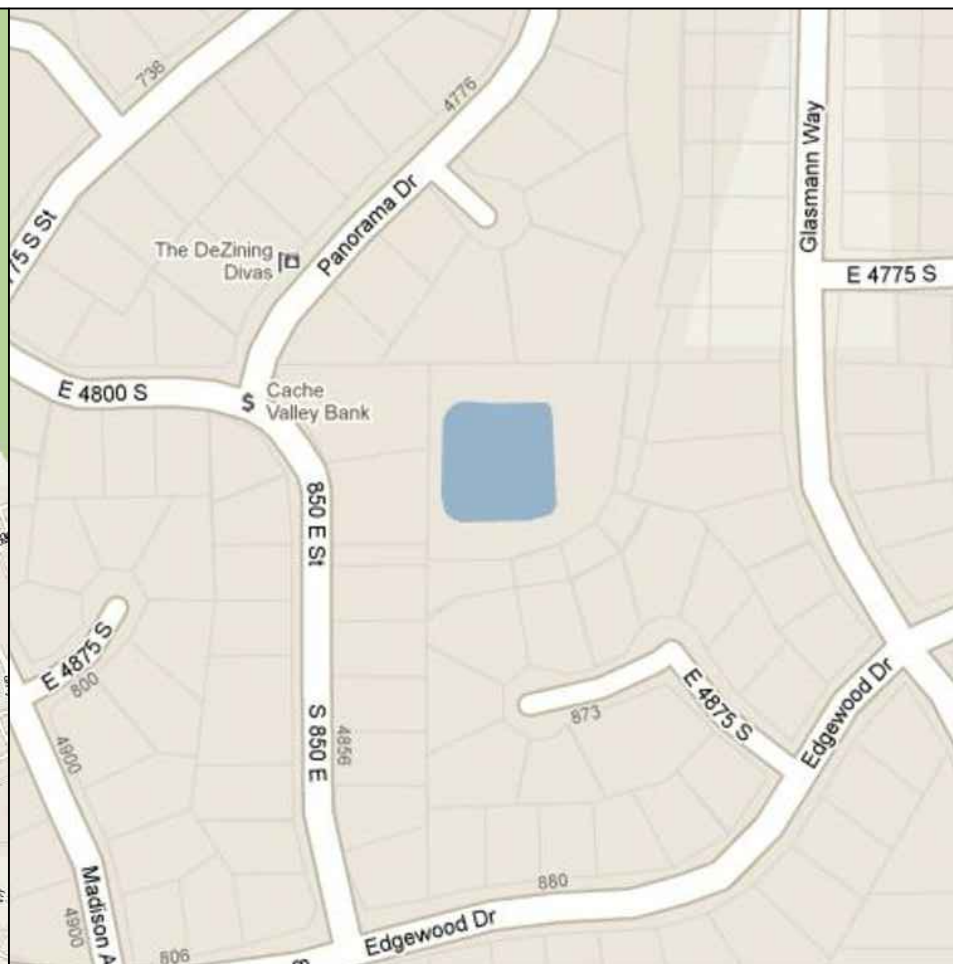
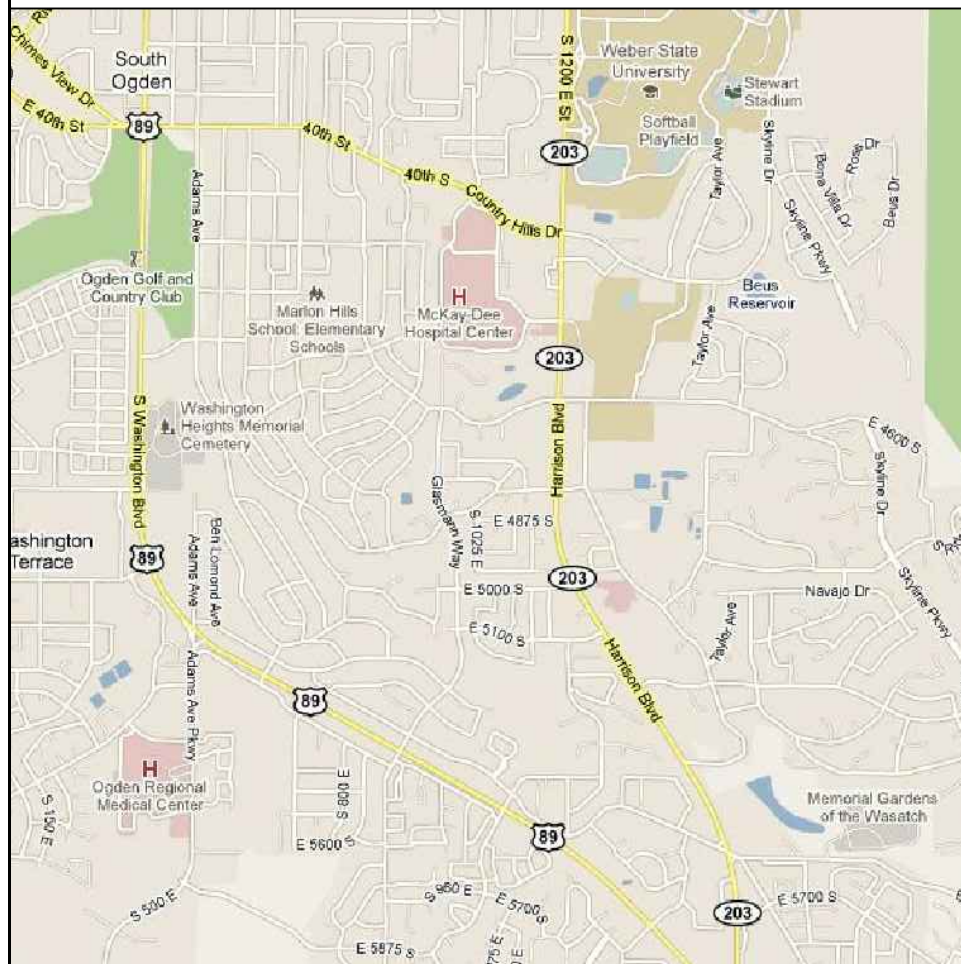
PROPRIETARY INFORMATION
 THE INFORMATION CONTAINED IN THIS SET OF CONSTRUCTION DOCUMENTS IS PROPRIETARY BY NATURE. ANY USE OR DISCLOSURE OTHER THAN THAT WHICH RELATES TO T-MOBILE SERVICES IS STRICTLY PROHIBITED.

GENERAL LOCATION

VICINITY MAP

CONTACTS

SHEET INDEX



NETWORK SYSTEM OWNER

PRINCIPAL POINT OF CONTACT
 MATT SCHUTJER
 801-809-7806

TELEPHONE UTILITY CONTACT
 ROCKY SCHUTJER
 801-860-0086

A/E FIRM
 COMLINK LAND SERVICES
 860 EAST 4500 SOUTH
 SUITE 312
 SALT LAKE CITY, UTAH 84107

PROPERTY ADDRESS
 4700 S. GLASMANN WAY
 OGDEN, UTAH 84403

SITE LOCATION:
 LATITUDE = 41°10'33.78" N
 LONGITUDE = 111°57'24.10" W

R.F. ENGINEERING
 ROD MUELLER
 121 W. ELECTION ROAD
 SALT LAKE CITY, UTAH 84104
 801-860-0131

ELECTRICAL UTILITY CONTACT
 ROCKY SCHUTJER
 801-860-0086

- t-1 TITLE SHEET
- g-1 GENERAL NOTES
- a-1 OVERALL SITE PLAN
- a-2 ENLARGED SITE PLAN
- a-3 ELEVATION
- a-4 EQUIPMENT PLAN
- a-5 CONSTRUCTION DETAILS
- a-6 BTS DETAIL
- a-7 CONSTRUCTION DETAILS
- a-8 CONSTRUCTION DETAILS
- a-9 AERIAL PHOTOGRAPHS
- a-10 PHOTO SIMULATION

NOT VALID UNLESS SIGNED

121 W. Election Rd.
 Suite 330
 Draper, UT 84020
 801.860.0086
 Fax 801.816.4420

860 EAST 4500 SOUTH SUITE 312
 SUITE 312
 SALT LAKE CITY, UTAH 84107
 801-288-4033

SITE NUMBER:
SLO1743A
 4700 SOUTH GLASMANN WAY
 OGDEN, UTAH 84403



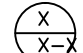

	DATE	PRINT NAME	SIGNATURE
PROJECT MANAGER			
NETWORK MANAGER			
SITE DEVELOPMENT			
DEVELOPMENT MANAGER			
CONSTRUCTION MANAGER			
R.F. ENGINEER			
LANDLORDS REPRESENTATIVE			
OPERATIONS			

t-1

GENERAL NOTES:

1. DRAWINGS ARE NOT TO BE SCALED, WRITTEN DIMENSIONS TAKE PRECEDENCE, THIS SET OF DOCUMENTS IS INTENDED TO BE USED FOR DIAGRAM PURPOSES ONLY, UNLESS NOTED OTHERWISE. THE GENERAL CONTRACTOR'S SCOPE OF WORK SHALL INCLUDE FURNISHING ALL MATERIALS, EQUIPMENT, LABOR, AND ANY REQUIREMENTS DEEMED NECESSARY TO COMPLETE INSTALLATION AS DESCRIBED IN THE DRAWINGS AND OWNER'S PROJECT MANUAL.
2. DRAWINGS WERE PREPARED FROM STANDARDIZED DETAILS DEVELOPED AND PROVIDED BY COMLINK LAND SERVICES, AND T-MOBILE CORPORATION. STANDARDIZED DETAILS ARE TO BE CONFIRMED AND CORRELATED AT THE SITE BY THE CONTRACTOR. THE CONTRACTOR IS RESPONSIBLE FOR ALL DIMENSIONS. STANDARDIZED DETAILS THAT REQUIRE MODIFICATIONS DUE TO ACTUAL FIELD CONDITIONS AND REQUIREMENTS MUST BE SUBMITTED TO, AND APPROVED BY, T-MOBILE CORPORATION PRIOR TO START OF WORK.
3. PRIOR TO THE SUBMISSION OF BIDS, CONTRACTORS INVOLVED SHALL VISIT THE JOB SITE TO FAMILIARIZE THEMSELVES WITH ALL CONDITIONS AFFECTING THE PROPOSED PROJECT. CONTRACTORS SHALL VISIT THE CONSTRUCTION SITE WITH THE CONSTRUCTION/CONTRACT DOCUMENTS TO VERIFY FIELD CONDITIONS AND CONFIRM THAT THE PROJECT WILL BE ACCOMPLISHED AS SHOWN. PRIOR TO PROCEEDING WITH CONSTRUCTION, ANY ERRORS, OMISSIONS, OR DISCREPANCIES SHALL BE BROUGHT TO THE ATTENTION OF THE ARCHITECT/ENGINEER VERBALLY AND IN WRITING.
4. THE GENERAL CONTRACTOR SHALL RECEIVE WRITTEN AUTHORIZATION TO PROCEED WITH CONSTRUCTION PRIOR TO STARTING WORK ON ANY ITEM NOT CLEARLY DEFINED BY THE CONSTRUCTION DRAWINGS/CONTRACT DOCUMENTS.
5. THE CONTRACTOR SHALL SUPERVISE AND DIRECT THE PROJECT DESCRIBED IN THE CONTRACT DOCUMENTS. THE CONTRACTOR SHALL BE SOLELY RESPONSIBLE FOR ALL CONSTRUCTION MEANS, METHODS, TECHNIQUES, SEQUENCES, AND PROCEDURES FOR COORDINATING ALL PORTIONS OF THE WORK UNDER THE CONTRACT.
6. THE CONTRACTOR SHALL INSTALL ALL EQUIPMENT AND MATERIALS ACCORDING TO MANUFACTURER'S/VENDOR'S SPECIFICATIONS UNLESS NOTED OTHERWISE OR WHERE LOCAL CODES OR ORDINANCES TAKE PRECEDENCE.
7. ALL WORK PERFORMED ON THE PROJECT AND MATERIALS INSTALLED SHALL BE IN STRICT ACCORDANCE WITH ALL APPLICABLE CODES, REGULATIONS, AND ORDINANCES. CONTRACTOR SHALL GIVE ALL NOTICES AND COMPLY WITH ALL LAWS, ORDINANCES, RULES, REGULATIONS AND LAWFUL ORDERS OF ANY PUBLIC AUTHORITY, MUNICIPAL AND UTILITY COMPANY SPECIFICATIONS, AND LOCAL AND STATE JURISDICTIONAL CODES BEARING ON THE PERFORMANCE OF THE WORK.
8. GENERAL CONTRACTOR SHALL PROVIDE, AT THE PROJECT SITE, A FULL SET OF CONSTRUCTION DOCUMENTS UPDATED WITH THE LATEST REVISIONS AND ADDENDA OR CLARIFICATIONS FOR USE BY ALL PERSONNEL INVOLVED WITH THE PROJECT.
9. THE STRUCTURAL COMPONENTS OF ADJACENT CONSTRUCTION OR FACILITIES ARE NOT TO BE ALTERED BY THIS CONSTRUCTION PROJECT UNLESS NOTED OTHERWISE.
10. SEAL ALL PENETRATIONS THROUGH FIRE-RATED AREAS WITH U.L. LISTED OR FIRE MARSHALL APPROVED MATERIALS IF APPLICABLE TO THIS FACILITY AND OR PROJECT SITE.
11. CONTRACTOR TO PROVIDE A PORTABLE FIRE EXTINGUISHER WITH A RATING OF NOT LESS THAN 2-A OR 2-A10BC WITHIN 75 FEET TRAVEL DISTANCE TO ALL PORTIONS OF PROJECT AREA DURING CONSTRUCTION.

12. CONTRACTOR SHALL MAKE NECESSARY PROVISIONS TO PROTECT EXISTING IMPROVEMENTS, EASEMENTS, PAVING, CURBING, ETC. DURING CONSTRUCTION. UPON COMPLETION OF WORK, CONTRACTOR SHALL REPAIR ANY DAMAGE THAT MAY HAVE OCCURRED DUE TO CONSTRUCTION ON OR ABOUT THE PROPERTY.
13. CONTRACTOR SHALL KEEP GENERAL WORK AREA CLEAN AND HAZARD FREE DURING CONSTRUCTION AND DISPOSE OF ALL DIRT, DEBRIS, AND RUBBISH. CONTRACTOR SHALL REMOVE EQUIPMENT NOT SPECIFIED AS REMAINING ON THE PROPERTY OR PREMISES. SITE SHALL BE LEFT IN CLEAN CONDITION AND FREE FROM PAINT SPOTS, DUST, OR SMUDGES OF ANY NATURE.
14. THE ARCHITECTS/ENGINEERS HAVE MADE EVERY EFFORT TO SET FORTH IN THE CONSTRUCTION AND CONTRACT DOCUMENTS THE COMPLETE SCOPE OF WORK. CONTRACTORS BIDDING THE JOB ARE NEVERTHELESS CAUTIONED THAT MINOR OMISSIONS OR ERRORS IN THE DRAWINGS AND OR SPECIFICATIONS SHALL NOT EXCUSE SAID CONTRACTOR FROM COMPLETING THE PROJECT AND IMPROVEMENTS IN ACCORDANCE WITH THE INTENT OF THESE DOCUMENTS. THE BIDDER SHALL BEAR THE RESPONSIBILITY OF NOTIFYING (IN WRITING) THE ARCHITECT/ENGINEER OF ANY CONFLICTS, ERRORS, OR OMISSIONS PRIOR TO SUBMISSION OF CONTRACTOR'S PROPOSAL. IN THE EVENT OF DISCREPANCIES THE CONTRACTOR SHALL PRICE THE MORE COSTLY OR EXTENSIVE WORK, UNLESS DIRECTED OTHERWISE.
15. THE CONTRACTOR SHALL PERFORM WORK DURING OWNER'S PREFERRED HOURS TO AVOID DISTURBING NORMAL BUSINESS.
16. THE CONTRACTOR SHALL PROVIDE T-MOBILE CORPORATION PROPER INSURANCE CERTIFICATES NAMING T-MOBILE CORPORATION AS ADDITIONAL INSURED, AND T-MOBILE CORPORATION PROOF OF LICENSE(S) AND PL & PD INSURANCE.


SYMBOLS & ABBREVIATIONS	
— T —	TELEPHONE
— E —	POWER
— G —	GROUND WIRE
— CC —	COAXIAL CABLE
	ANTENNA
A1	ANTENNA MARK NO.
	CENTERLINE
[E]	EXISTING
[N]	NEW
W/	WITH
PBO	PROVIDED BY OWNER
	DETAIL NUMBER
	SHEET NUMBER
V.I.F.	VERIFY IN FIELD

RMP POLE REPLACEMENT
 DRAWN BY: TLH (COMLINK LS)
 CHECKED BY: ROCKY SCHUTJER
 DATE: 2-16-2011

REVISIONS		
DATE	DESCRIPTION	INITIALS
2-16-2011	ZONING DRAWINGS	TLH
2-28-2011	REVISIONS	TLH

NOT VALID UNLESS SIGNED

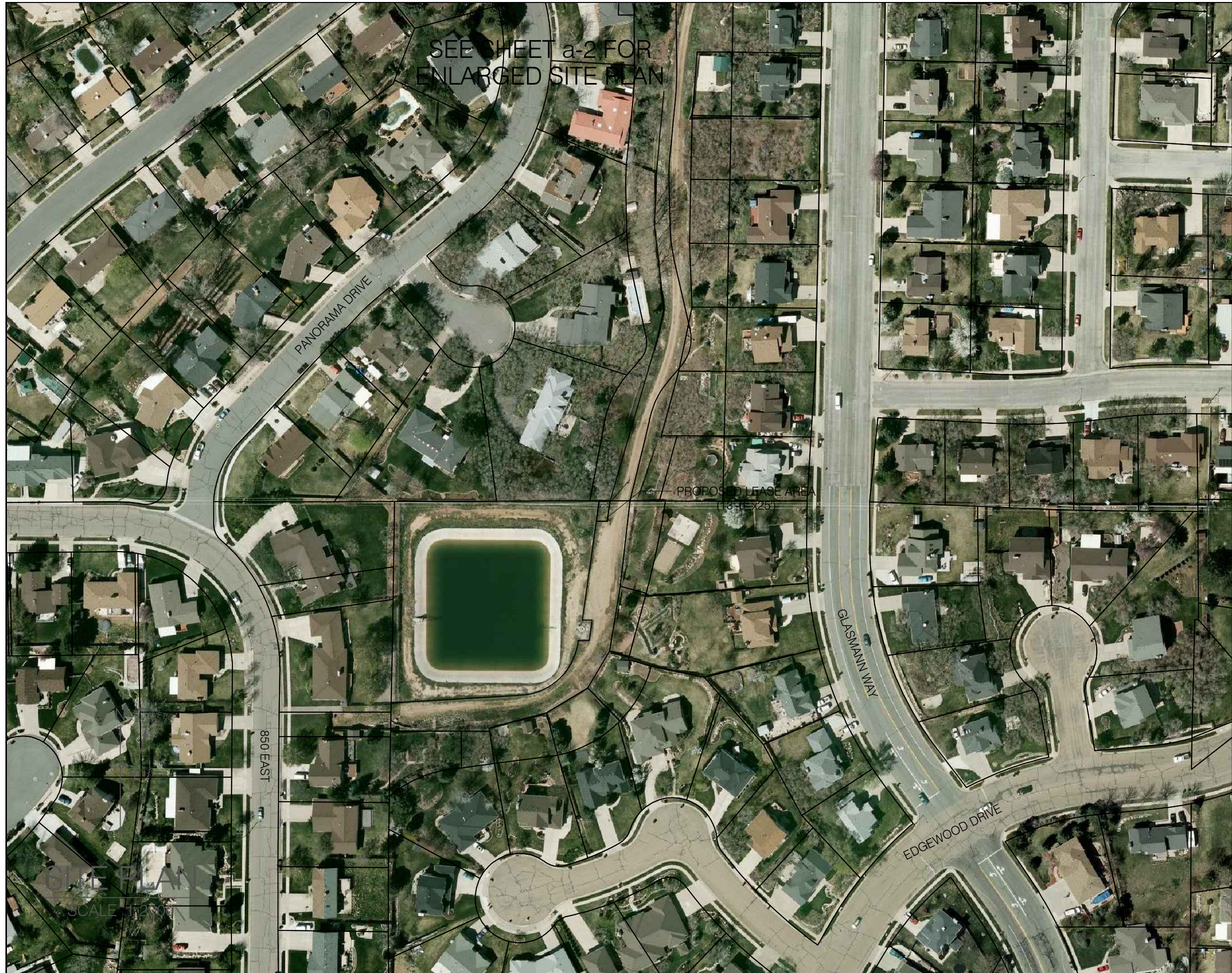
T-Mobile
 121 W. Election Rd.
 Suite 330
 Draper, UT 84020
 801.860.0086
 Fax 801.816.4420



COMLINK LAND SERVICES
 860 EAST 4500 SOUTH SUITE 312
 SUITE 312
 SALT LAKE CITY, UTAH 84107
 801-288-4033

SITE NUMBER:
SLO1743A
 4700 SOUTH GLASMANN WAY
 OGDEN, UTAH 84403

g-1



RMP POLE REPLACEMENT
 DRAWN BY: TLH (COMLINK LS)
 CHECKED BY: ROCKY SCHUTJER
 DATE: 2-16-2011

REVISIONS		
DATE	DESCRIPTION	INITIALS
2-16-2011	ZONING DRAWINGS	TLH
2-28-2011	REVISIONS	TLH

NOT VALID UNLESS SIGNED

T-Mobile
 121 W. Election Rd.
 Suite 330
 Draper, UT 84020
 801.860.0086
 Fax 801.816.4420



COMLINK
 LAND SERVICES

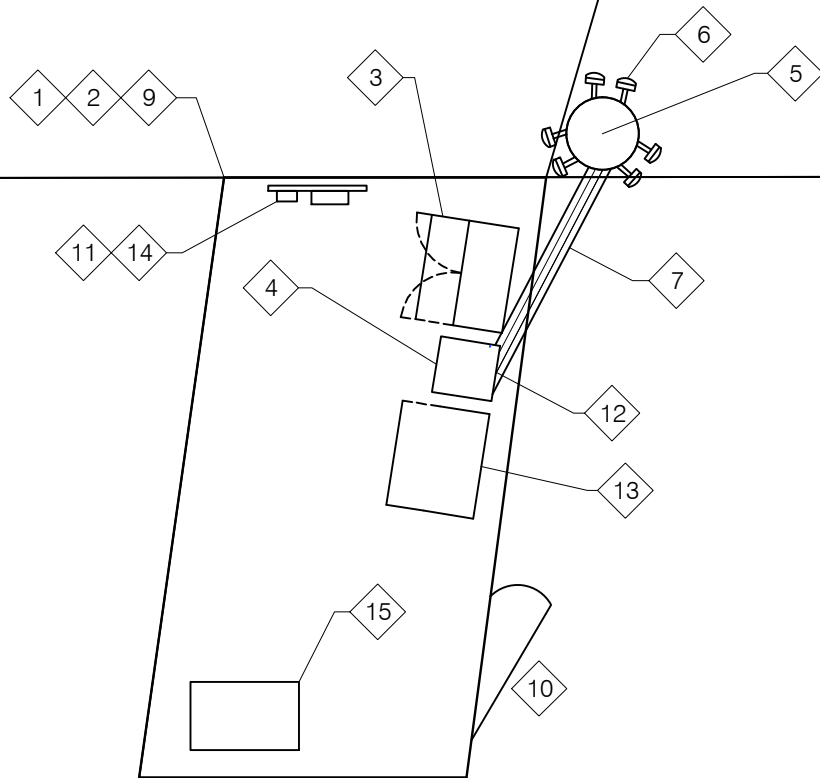
860 EAST 4500 SOUTH SUITE 312
 SUITE 312
 SALT LAKE CITY, UTAH 84107
 801-288-4033

SITE NUMBER:
SLO1743A
 4700 SOUTH GLASMANN WAY
 OGDEN, UTAH 84403

a-1

SITE PLAN
 SCALE 1/2"=1'

LEASE AREA (13'-6"x25')

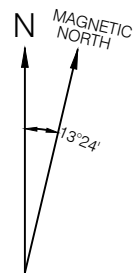


CONSTRUCTION PLAN KEYED NOTES

- 1 LEASE AREA LINE, REFER TO SHEET s-1 FOR ADDITIONAL INFORMATION. (13'-6" x 25')
- 2 CONCRETE PAD (13'-6"x25')
- 3 PRIMARY BASE TRANSCIVER STATION (BTS) LOCATION (PROVIDED BY T-MOBILE).
- 4 SYSTEM DEMARCATION CABINET (BASE CONNECTION TO BTS UNITS) TELEPHONE CONNECTION AND ANTENNA CONNECTION
- 5 NEW 72' POWER POLE (PROVIDED BY RMP)
- 6 FLUSH MOUNT ANTENNAS (PROVIDED BY T-MOBILE)
- 7 COAXIAL CABLING TO ANTENNAS IN UNDERGROUND CONDUIT
- 8 SEE SHEETS e-2, e-3, e-4 FOR GROUNDING TYPICAL.
- 9 NEW 6' CHAIN LINK FENCE TO SURROUND LEASE AREA PERIMETER
- 10 6' WIDE SWINGING CHAIN LINK GATE
- 11 TWO SPOTLIGHTS WITH 2 HOUR TIMERS MOUNTED ON 6' METAL POLE WITH 'T' FRAME
- 12 GPS ANTENNA (PROVIDED BY T-MOBILE)
- 13 3106 3G CABINET (PROVIDED BY T-MOBILE).
- 14 METER BASE AND TELCO BOX PEDESTAL
- 15 BATTERY BACKUP

SITE NOTES

1. VERIFY AZIMUTHS WITH FINAL SITE CONFIGURATION SHEET FROM R.F. ENGINEER.
2. PROVIDE 4" CONDUIT EQUIPPED WITH 1 PULL STRING AND (2) 6 PAIR 22 GAUGE WIRES. ALL TELCO CONDUITS AND TELCO WIRING MUST MAINTAIN A MINIMUM SEPERATION DISTANCE OF 18" AWAY FROM ALL A/C POWER CONDUITS AND WIRING.
3. DOGHOUSE EQUIPPED WITH 2 PLYWOOD BACKBOARDS 26"X21"X3/4" THICK.
4. DOGHOUSE EQUIPPED WITH 1-#6 GREEN GROUND WIRE 6 FEET LONG WITH 1 END CONNECTED TO GROUND BUS BAR.
5. 1 FOURPLEX 120 A/C OUTLET INSTALLED IN DOGHOUSE BUT NOT MOUNTED ON PLYWOOD BACKBOARDS.
6. PROVIDE TELECT 8 T1 DSX UNIT TO OPERATIONS FOR T1 MAINTENANCE. TELECT PART #010-5008-0001.



SITE PLAN

SCALE 1/8" = 1'-0"

RMP POLE REPLACEMENT

DRAWN BY: TLH (COMLINK LS)

CHECKED BY: ROCKY SCHUTJER

DATE: 2-16-2011

REVISIONS

DATE	DESCRIPTION	INITIALS
2-16-2011	ZONING DRAWINGS	TLH
2-28-2011	REVISIONS	TLH

NOT VALID UNLESS SIGNED



121 W. Election Rd.
Suite 330
Draper, UT 84020
801.860.0086
Fax 801.816.4420



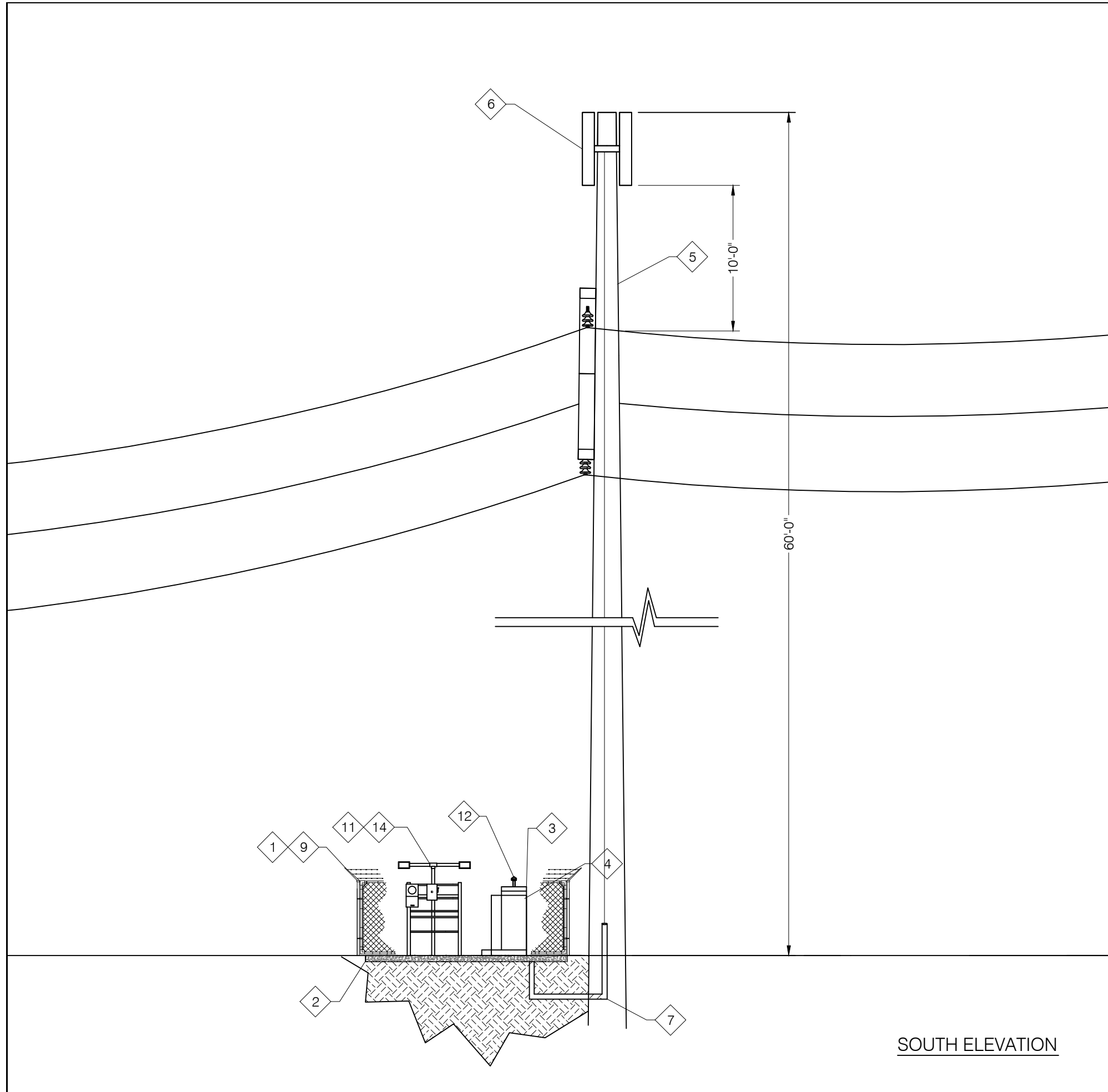
860 EAST 4500 SOUTH SUITE 312
SUITE 312
SALT LAKE CITY, UTAH 84107
801-288-4033

SITE NUMBER:

SLO1743A

4700 SOUTH GLASMANN WAY
OGDEN, UTAH 84403

a-2



CONSTRUCTION PLAN KEYED NOTES

- 1 LEASE AREA LINE, REFER TO SHEET s-1 FOR ADDITIONAL INFORMATION. (13'-6" x 25')
- 2 CONCRETE PAD (13'-6"x25')
- 3 PRIMARY BASE TRANSCEIVER STATION (BTS) LOCATION (PROVIDED BY T-MOBILE).
- 4 SYSTEM DEMARCATION CABINET (BASE CONNECTION TO BTS UNITS) TELEPHONE CONNECTION AND ANTENNA CONNECTION
- 5 NEW 72" POWER POLE (PROVIDED BY RMP)
- 6 FLUSH MOUNT ANTENNAS (PROVIDED BY T-MOBILE)
- 7 COAXIAL CABLING TO ANTENNAS IN UNDERGROUND CONDUIT
- 8 SEE SHEETS e-2, e-3, e-4 FOR GROUNDING TYPICAL.
- 9 NEW 6' CHAIN LINK FENCE TO SURROUND LEASE AREA PERIMETER
- 10 6' WIDE SWINGING CHAIN LINK GATE
- 11 TWO SPOTLIGHTS WITH 2 HOUR TIMERS MOUNTED ON 6' METAL POLE WITH "T" FRAME
- 12 GPS ANTENNA (PROVIDED BY T-MOBILE)
- 13 3106 3G CABINET (PROVIDED BY T-MOBILE).
- 14 METER BASE AND TELCO BOX PEDESTAL
- 15 BATTERY BACKUP

SOUTH ELEVATION

NOTE:
 VERIFY WITH PLANNING AND ZONING APPROVALS AND "FINAL" SITE CONFIGURATION SHEET FROM R.F. ENGINEER.

RMP POLE REPLACEMENT
 DRAWN BY: TLH (COMLINK LS)
 CHECKED BY: ROCKY SCHUTJER
 DATE: 2-16-2011

REVISIONS		
DATE	DESCRIPTION	INITIALS
2-16-2011	ZONING DRAWINGS	TLH
2-28-2011	REVISIONS	TLH

NOT VALID UNLESS SIGNED

T-Mobile
 121 W. Election Rd.
 Suite 330
 Draper, UT 84020
 801.860.0086
 Fax 801.816.4420

RAGE
 DEVELOPMENT LLC

COMLINK
 LAND SERVICES

860 EAST 4500 SOUTH SUITE 312
 SUITE 312
 SALT LAKE CITY, UTAH 84107
 801-288-4033

SITE NUMBER:
SLO1743A
 4700 SOUTH GLASMANN WAY
 OGDEN, UTAH 84403

a-3

RMP POLE REPLACEMENT
 DRAWN BY: TLH (COMLINK LS)
 CHECKED BY: ROCKY SCHUTJER
 DATE: 2-16-2011

REVISIONS		
DATE	DESCRIPTION	INITIALS
2-16-2011	ZONING DRAWINGS	TLH
2-28-2011	REVISIONS	TLH

NOT VALID UNLESS SIGNED

T-Mobile
 121 W. Election Rd.
 Suite 330
 Draper, UT 84020
 801.860.0086
 Fax 801.816.4420

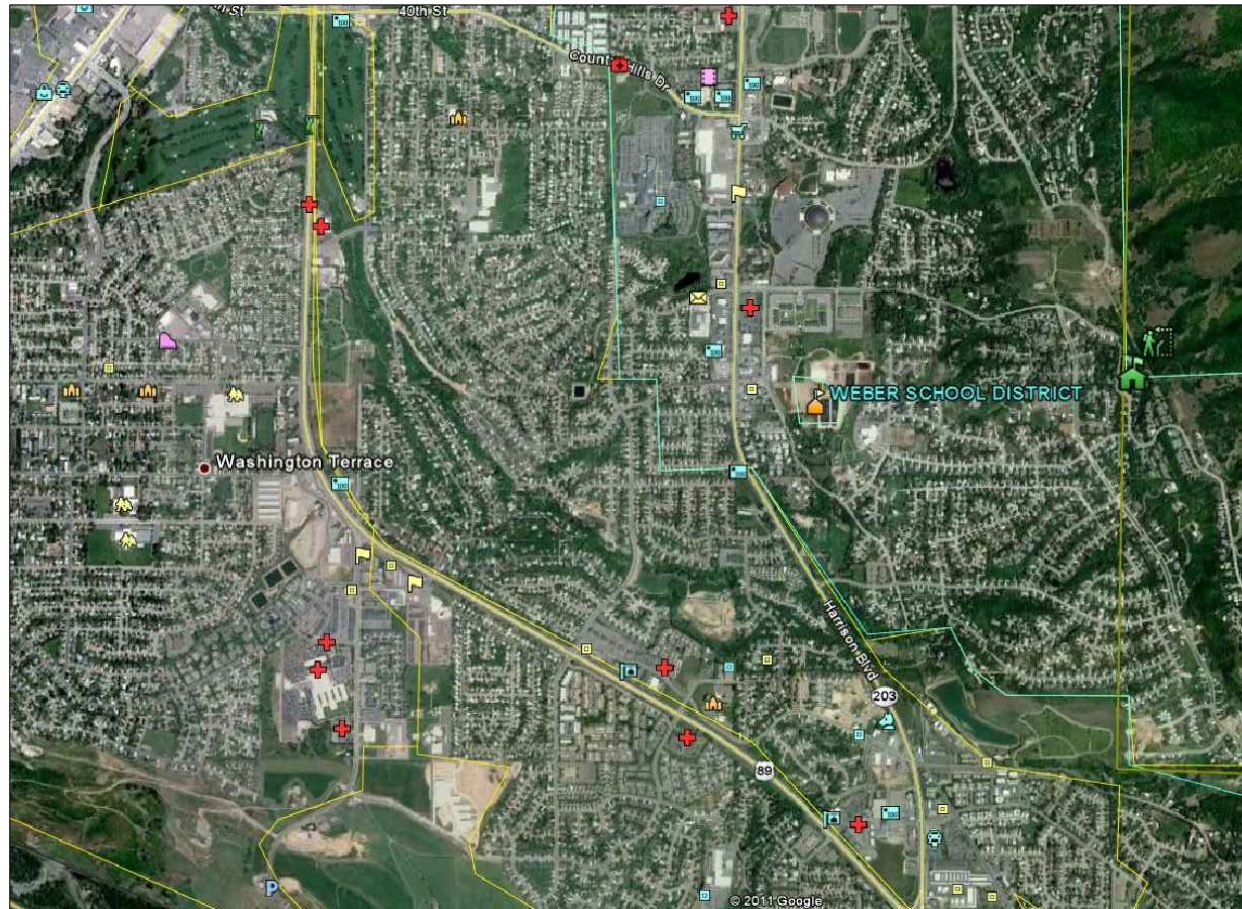
RAGE
 DEVELOPMENT LLC

COMLINK
 LAND SERVICES

860 EAST 4500 SOUTH SUITE 312
 SUITE 312
 SALT LAKE CITY, UTAH 84107
 801-288-4033

SITE NUMBER:
SLO1743A
 4700 SOUTH GLASMANN WAY
 OGDEN, UTAH 84403

a-9



AERIAL PHOTOS OF RMP POLE REPLACEMENT SL01743A



RMP POLE REPLACEMENT
 DRAWN BY: TLH (COMLINK LS)
 CHECKED BY: ROCKY SCHUTJER
 DATE: 2-16-2011

REVISIONS		
DATE	DESCRIPTION	INITIALS
2-16-2011	ZONING DRAWINGS	TLH
2-28-2011	REVISIONS	TLH

NOT VALID UNLESS SIGNED

T-Mobile
 121 W. Election Rd.
 Suite 330
 Draper, UT 84020
 801.860.0086
 Fax 801.816.4420

RAGE
 DEVELOPMENT LLC

COMLINK
 LAND SERVICES

860 EAST 4500 SOUTH SUITE 312
 SUITE 312
 SALT LAKE CITY, UTAH 84107
 801-288-4033

SITE NUMBER:
SLO1743A
 4700 SOUTH GLASMANN WAY
 OGDEN, UTAH 84403

a-10