

995.58

CLARKE FARM LLC
220400001
40 AC±

N 89°26'51" W 1314.49'

S 89°24'31" E 1316.19'

S 00°18'06" W 1324.59'

CLARKE FARM LLC
220400011
12.56'AC±

268.77'

S0°18'59"E 698.18'
266.63'
S69°06'31"E

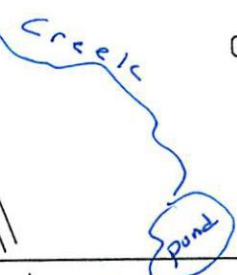
EDEN WATER WORKS
220400017
3.02 AC±
188.71'
208.71'

CLARKE FARM - ETAL
MELVIN RAY CLARKE
REVOCABLE TRUST
220400028
53.25AC±
56+

222.18'

863.79'

443'



1287'

EDEN WATER WORKS
220400017
208.71' AC±
N20°10'56"E
N69°49'04"W
208.71'
208.71'
S20°10'56"W

Distance from Creek 300'
Distance from River 600'

HAY BARN 36' x 36'
CLARKE FARM
EQUIPMENT BARN
GARAGE / SHOP

N36°W
726'

N 32° E ?
726.00'

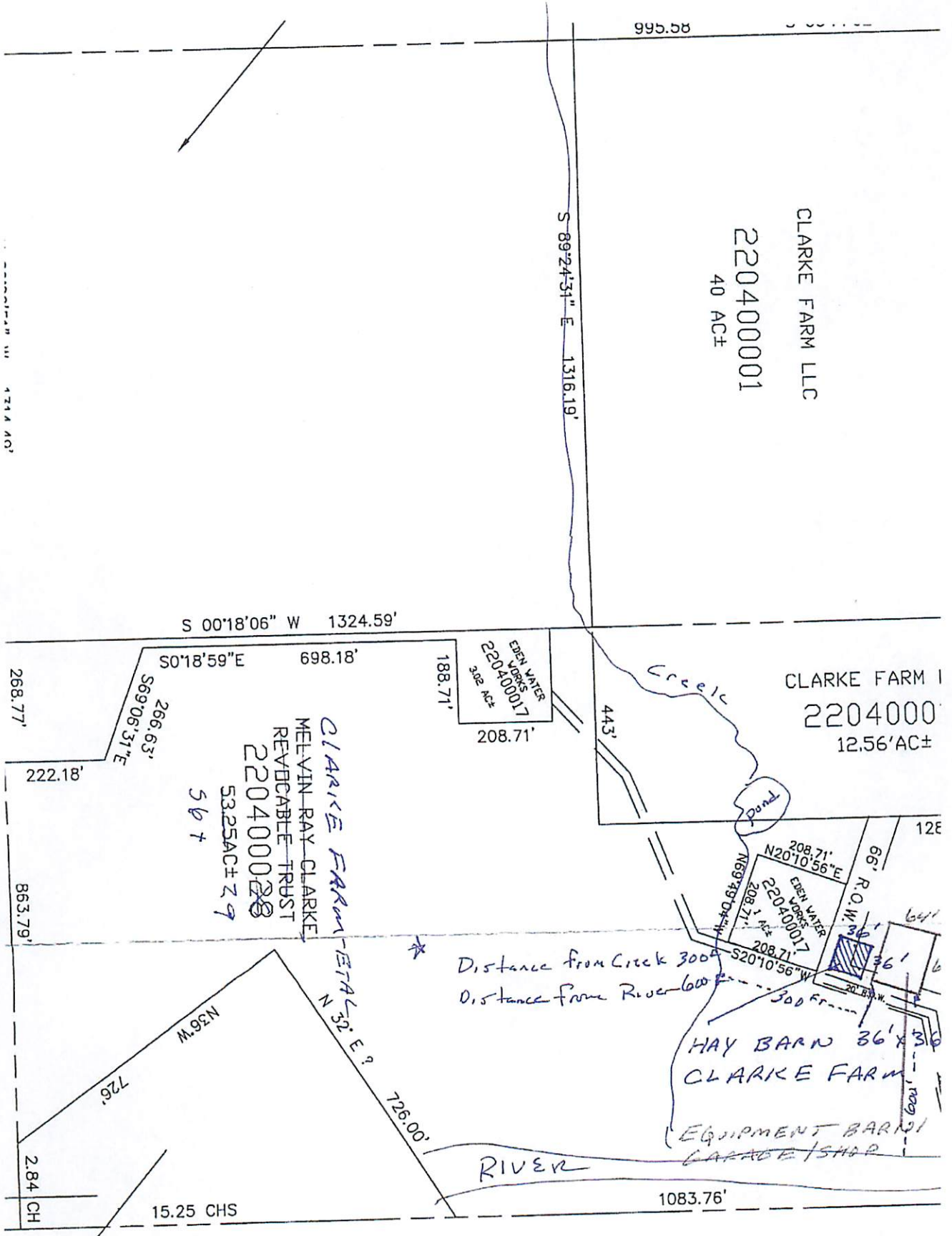
RIVER

2.84 CH

15.25 CHS

1083.76'

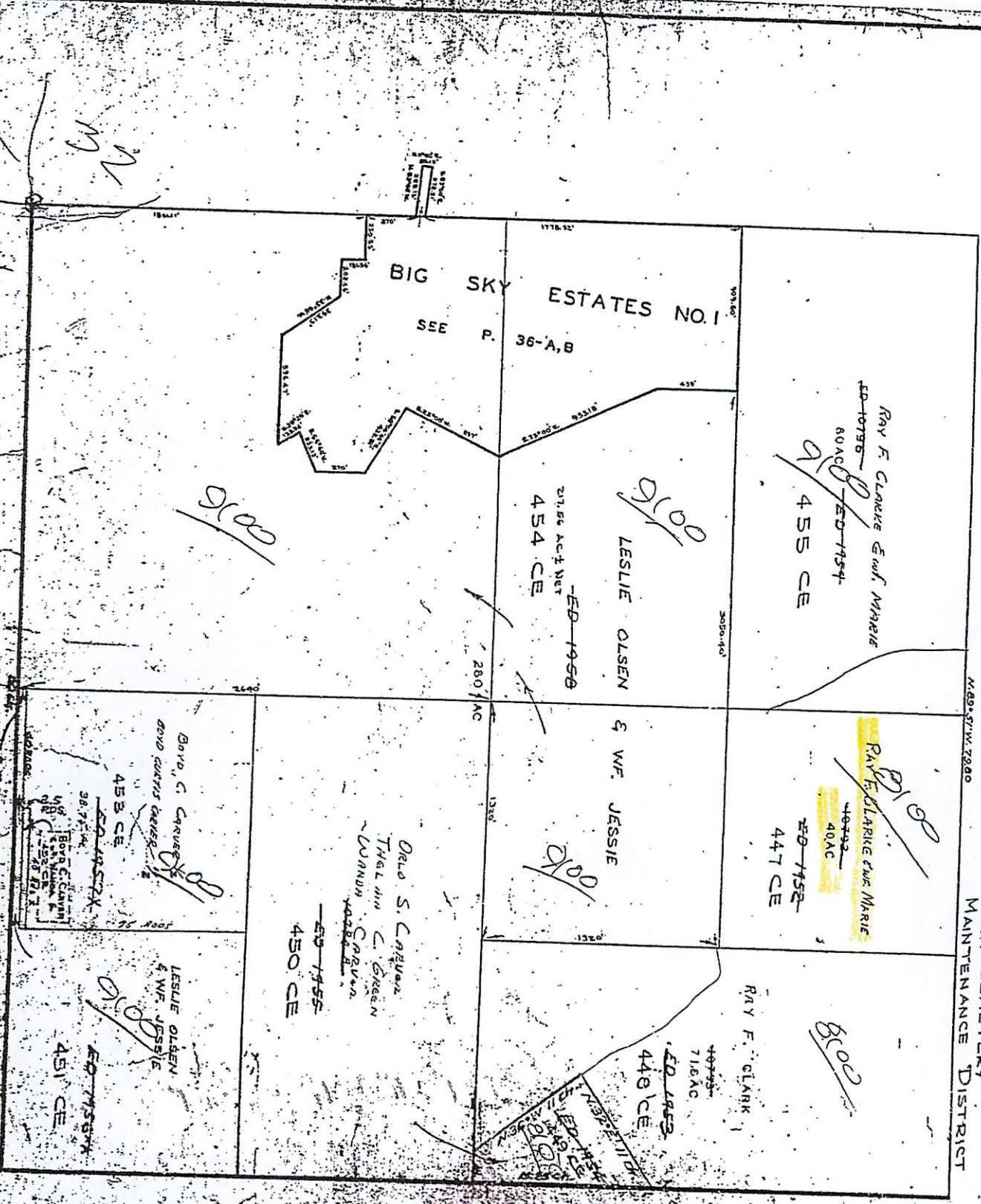
SEE PAGE 46



SECTION 33.7.7 N.R.I.E.S.L.B & M.
Eden District
Scale 1" = 400 feet

1966

EDEN CEMETERY
MAINTENANCE DISTRICT

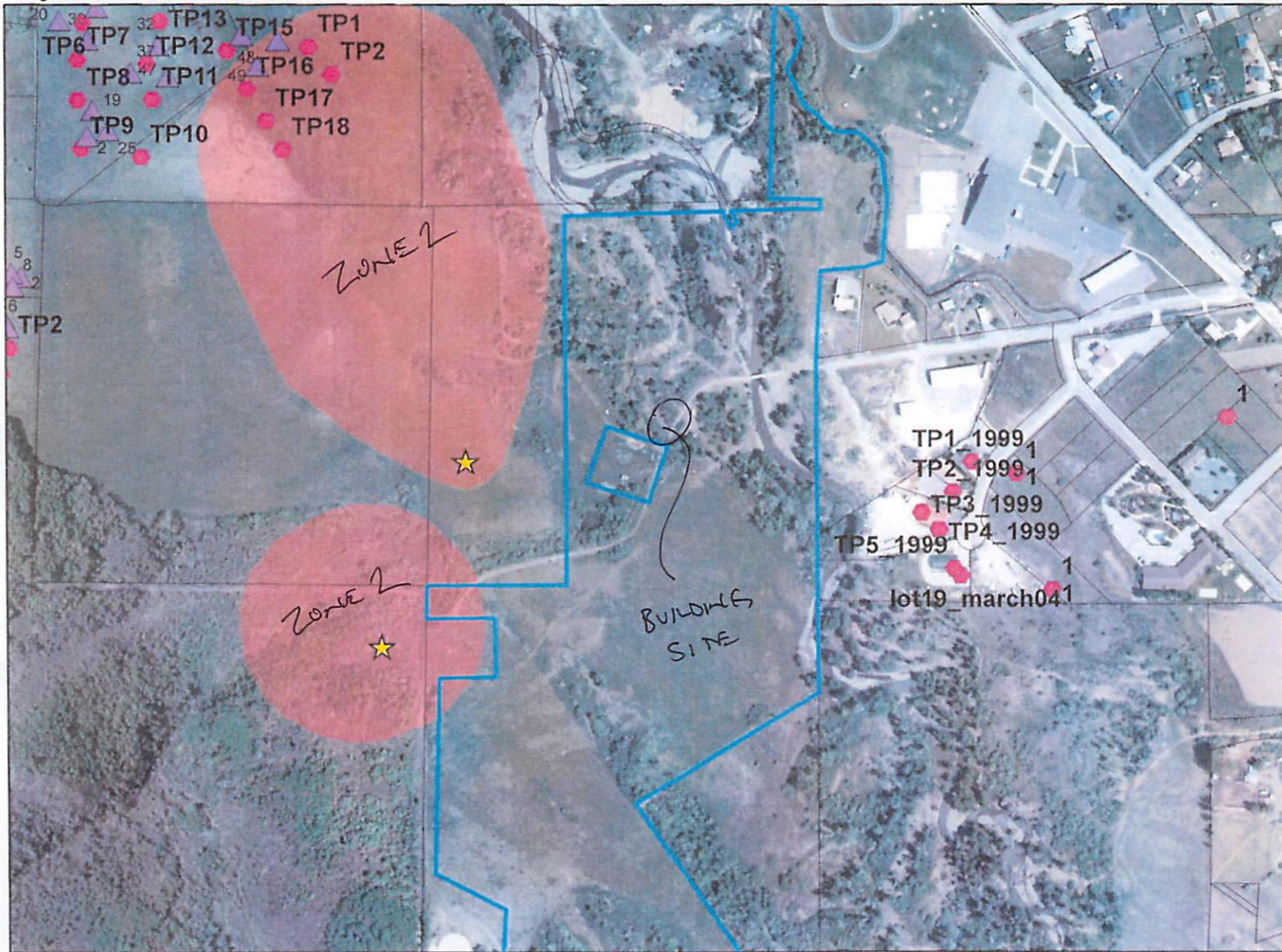


N
W

SD

DRINKING WATER
SOURCE PROTECTION.

VERIFIED THIS IS HEALTH DEPARTMENT
w/ SUMMER DAY 4/5/2016



★ - water source
red poly = zone 2

1 inch = 500 feet
map scale 1:6000

Legend

- ▲ watertable_master
- test pit

