

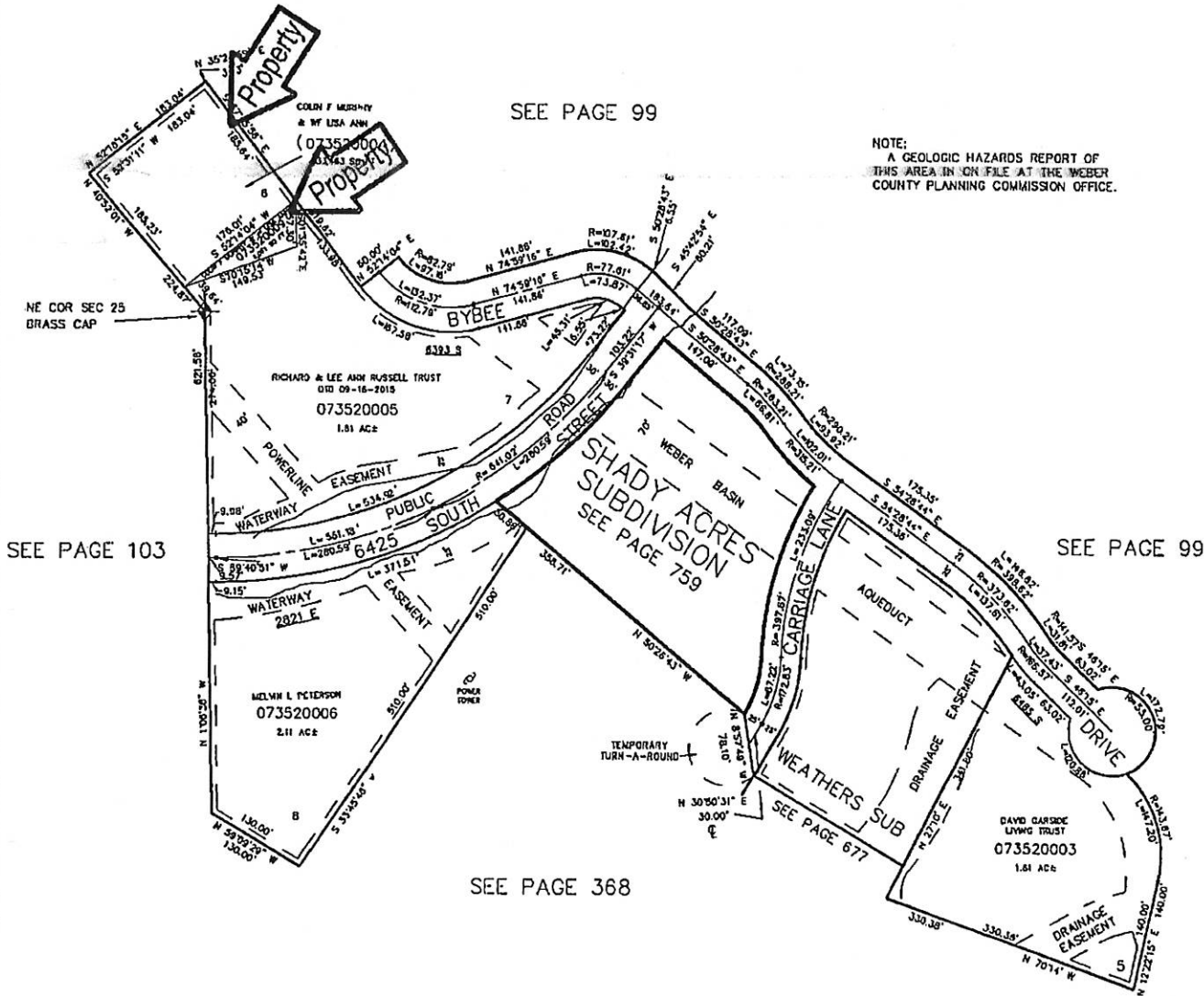
PART SE 1/4 SEC 23, SW 1/4 SEC 24 & NW 1/4 SEC 25, T.5N., R.1W., S.L.B. & M. 352  
 SPRING CREEK ESTATES SUBDIVISION NO. 2

LOTS 3 - 8  
 IN WEBER COUNTY  
 SCALE 1" = 100'

TAXING UNIT: 54

SEE PAGE 99

NOTE:  
 A GEOLOGIC HAZARDS REPORT OF  
 THIS AREA IS ON FILE AT THE WEBER  
 COUNTY PLANNING COMMISSION OFFICE.



SEE PAGE 103

SEE PAGE 99

SEE PAGE 368

\*SEE CORRECTION AFT.  
 3-25-92 (1622-160)

7' UTILITY & DRAINAGE EASEMENTS EACH  
 SIDE OF PROPERTY LINES AS INDICATED  
 BY DASHED LINES EXCEPT AS OTHERWISE  
 SHOWN.

FOR COMPLETE ENO DATA SEE  
 ORIGINAL DEDICATION PLAT IN  
 BOOK 30, PAGE 88 OF RECORDS.

NOTICE THIS IS NEITHER A PLAT NOR A SURVEY. IT  
 IS FURNISHED MERELY AS A CONVENIENCE TO AID  
 YOU IN LOCATING THE LAND INDICATED HEREON  
 WITH REFERENCE TO STREETS AND OTHER LAND  
 NO LIABILITY IS ASSUMED BY REASON OF ANY  
 RELIANCE HEREON.