

**Seed Mix:**

Species	Amount per pound
Western Wheatgrass ( <i>Agropyron smithii</i> ) a.k.a. <i>Pascopyrum smithii</i> )	.225
Indian ricesgrass ( <i>Oryzopsis hymenoides</i> ) a.k.a. <i>Achnatherum hymenoides</i> )	.2
Slender wheatgrass ( <i>Agropyron trachycaulum</i> )	.2
Sheep fescue ( <i>Festuca ovina</i> )	.05
Sandberg bluegrass ( <i>Poa sandbergii</i> )	.05
Mountain brome ( <i>Bromus marginatus</i> )	.275

**Hydro-seeding notes:**

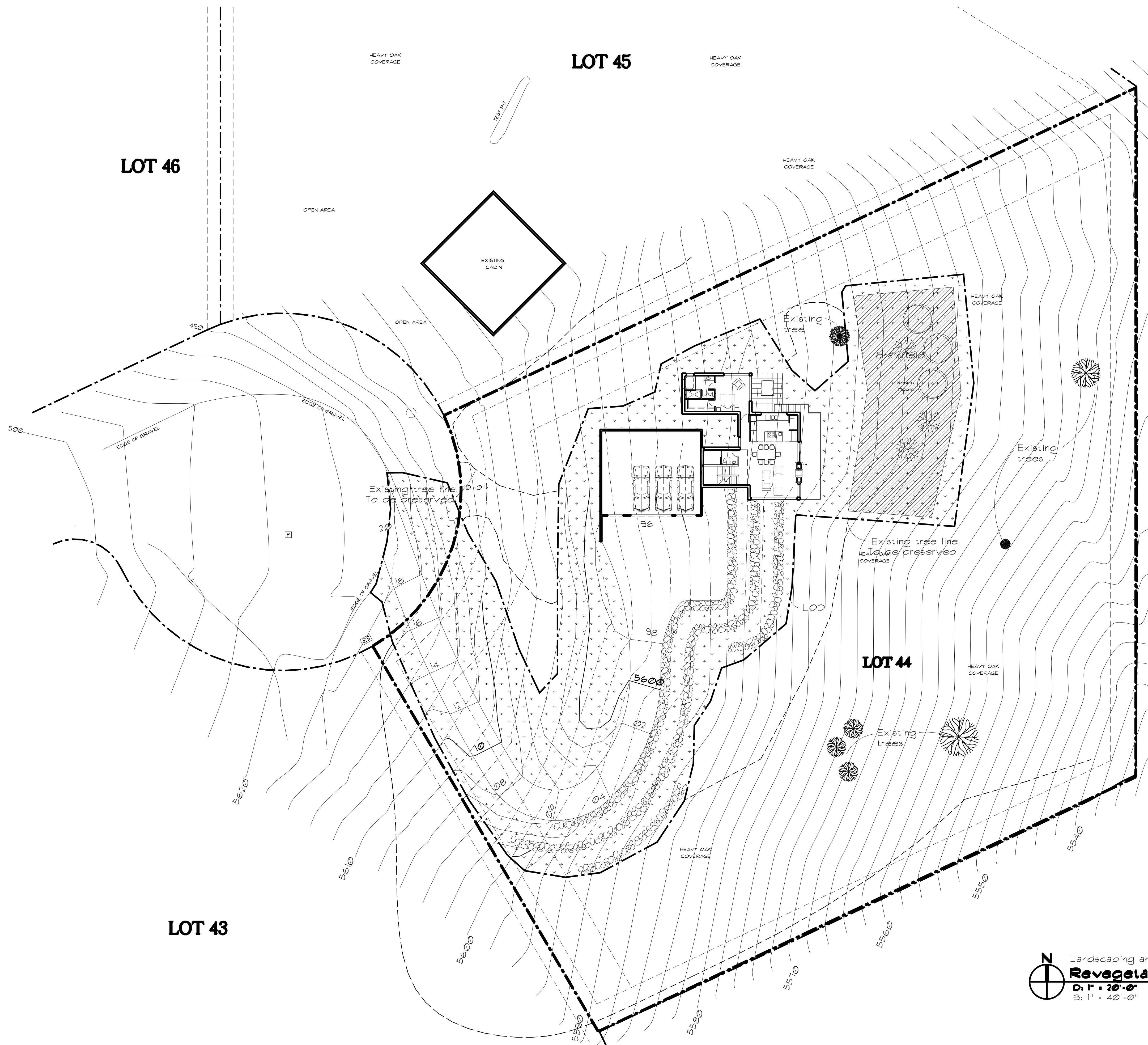
- Seed disturbed area with mix shown below. Install straw bio-degradable erosion blanket. Pin in place and cut around trees.
- Use a broadcast rate of 1 pound per 600 sq. ft. of disturbed area.
- Do not hydro-seed until final grading of the site has been completed.
- Maintain a watering schedule until the new vegetation has been established.

**Legend:**

- (4) Mountain maple or Poplar
- (4) Austrian Pine
- (20) Oak Brush (1 gal.)
- Hydro-seeded area  
See notes.  
(20,000 sq. ft. +/-)

**NOTES:**

- New trees shown will be irrigated by drip irrigation.
- All reseeded area shall have 80% germination coverage with a minimum of 3-6 inches of growth or re-seeding shall be required. Supply temporary irrigation.



**Landscaping and Revegetation Plan**  
 D: 1" = 20'-0"  
 B: 1" = 40'-0"