

* ALL ROCK
4' HT MAX

36 TOTAL
* TYPICAL ASPEN
POPUL TREMULOIDES
12 - 2" CAL.
12 - 1 1/2" CAL.
12 - 1" CAL

* ALL SHRUBS
PERENNIALS
& TREES
TO BE IRRIGATED
WITH RAINBIRD
XERIGATION PARTS
AS PER SPECIFICATIONS

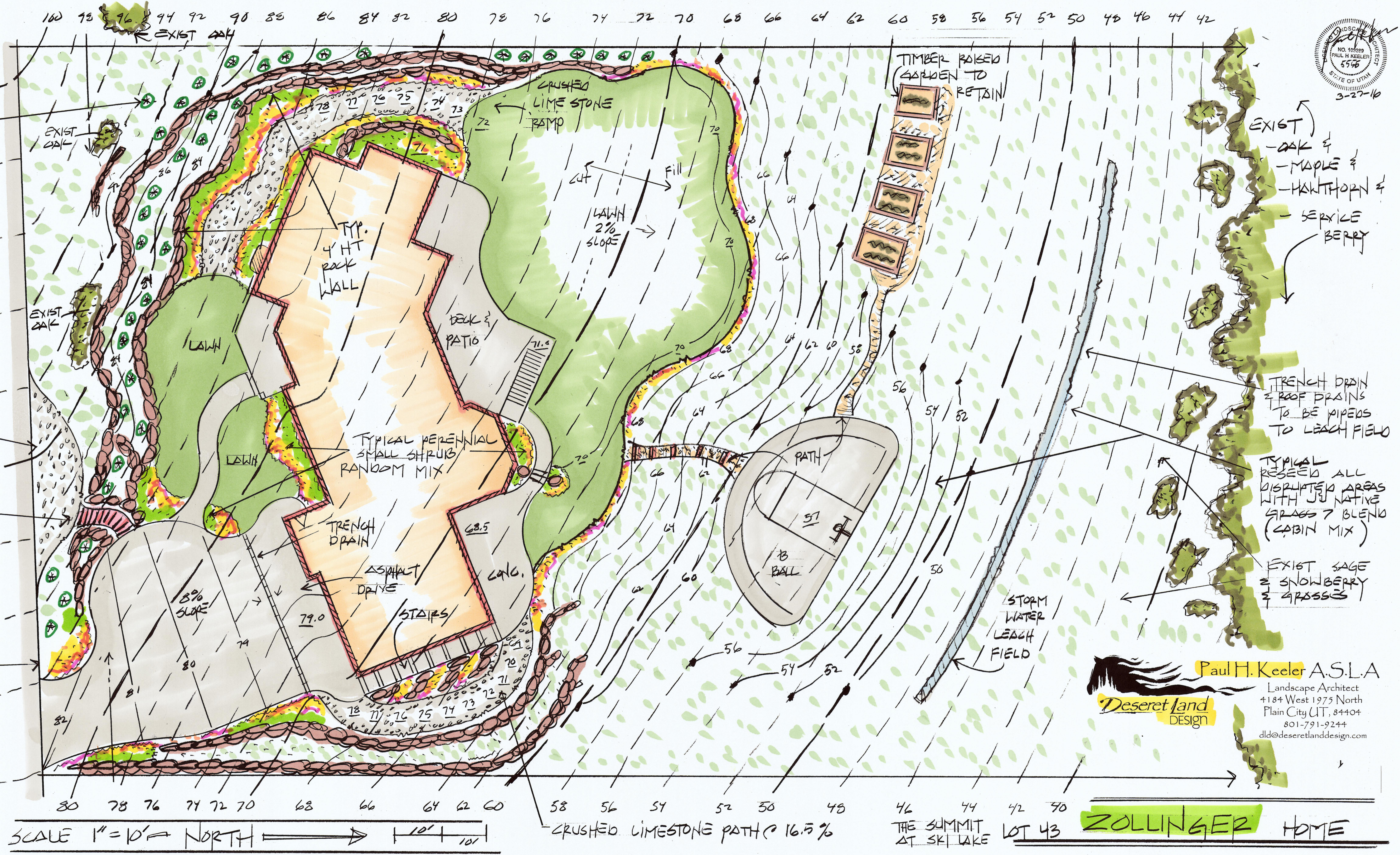
* ALL LAWN
TO BE IRRIGATED
WITH RAINBIRD
1800 HEADS

* PERENNIAL MIX
LUPINE
DELPHINIUM
CONE FLOWER
PENSTEMON
RUBIBECKIA
VARIGATED IRIS
SHASTA RAGGY
FORESTER GRASS
ASTER
POTENTILLA

* TOTAL LOT
AREA
51,204 S.F.

* TOTAL SAND
4,400 S.F.

* TOTAL SHRUBS
PERENNIALS
& TREES
2,900 S.F.



EXIST
- OAK &
- MAPLE &
- HAWTHORN &
- SERVICE
BERRY

TRENCH DRAIN
& ROOF DRAINS
TO BE PIPED
TO LEACH FIELD

TYPICAL
RESEED ALL
DISRUPTED AREAS
WITH JO NATIVE
GRASS & BLEND
(CABIN MIX)

EXIST SAGE
& SNOWBERRY
& GRASSES

Paul H. Keeler A.S.L.A.
Landscape Architect
4184 West 1975 North
Plain City UT, 84404
801-791-9244
dld@deseretlanddesign.com

Deseret Land
Design

SCALE 1"=10' NORTH

THE SUMMIT
AT SKI LAKE LOT 43 **ZOLLINGER HOME**