

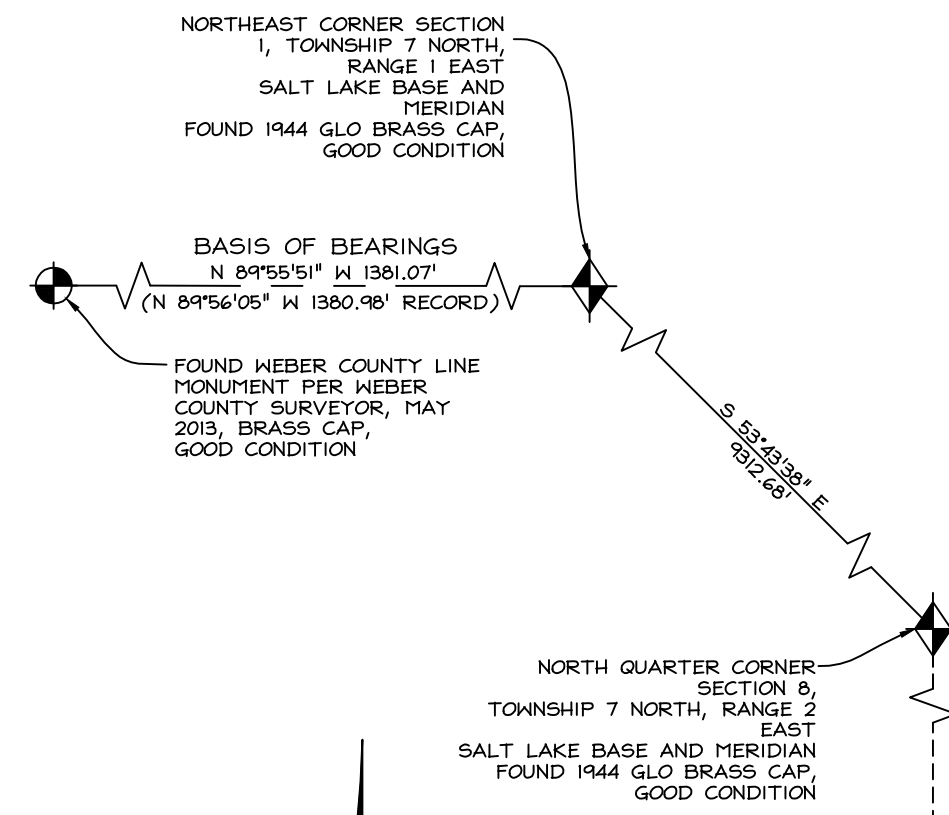
SUMMIT EDEN PHASE 1D - AMENDED AND RESTATED

LOCATED IN THE NORTHEAST 1/4 OF SECTION 8,
TOWNSHIP 7 NORTH, RANGE 2 EAST, SALT LAKE BASE AND MERIDIAN
SEPTEMBER 2015

CURVE TABLE					
CURVE	LENGTH	RADIUS	DELTA	LONG CHORD	LENGTH
C1	28.37'	430.00'	3°46'49"	S 82°13'12" E	28.37'
C2	247.36'	455.00'	31°08'57"	S 64°45'19" E	244.33'
C3	36.13'	23.00'	90°00'00"	S 1°01'51" E	32.53'
C4	103.09'	382.00'	15°27'45"	N 22°17'09" W	102.78'
C5	105.39'	667.00'	9°03'12"	S 15°44'48" W	105.28'
C6	514.11'	283.00'	104°05'10"	N 31°46'11" W	446.28'
C7	130.00'	733.00'	10°09'42"	S 15°11'33" W	129.83'
C8	116.22'	138.00'	48°15'18"	N 84°06'20" E	112.82'
C9	30.12'	57.00'	30°16'20"	S 75°06'50" W	29.77'
C10	34.12'	250.00'	7°49'07"	S 49°56'25" E	34.09'
C11	84.02'	100.00'	48°08'14"	N 29°46'51" W	81.57'
C12	137.86'	325.00'	24°18'18"	S 17°51'53" E	136.83'
C13	36.13'	23.00'	90°00'00"	S 88°58'09" W	32.53'

CURVE TABLE					
CURVE	LENGTH	RADIUS	DELTA	LONG CHORD	LENGTH
C14	36.57'	268.00'	7°49'07"	S 49°56'25" E	36.54'
C15	68.89'	82.00'	48°08'14"	N 29°46'51" W	66.88'
C16	145.50'	343.00'	24°18'18"	S 17°51'53" E	144.41'
C17	130.23'	307.00'	24°18'18"	S 17°51'53" E	129.26'
C18	99.14'	118.00'	48°08'14"	N 29°46'51" W	96.25'
C19	31.66'	232.00'	7°49'07"	S 49°56'25" E	31.63'
C20	124.15'	700.00'	10°09'42"	S 15°11'33" W	123.98'
C21	47.94'	75.00'	36°37'16"	N 88°55'31" W	47.13'
C22	16.74'	75.00'	12°47'11"	N 66°22'16" E	16.70'
C23	101.07'	120.00'	48°15'18"	N 84°06'20" E	98.10'
C24	454.16'	250.00'	104°05'10"	N 31°46'11" W	394.24'
C25	108.48'	768.00'	8°05'35"	S 13°38'57" W	108.39'

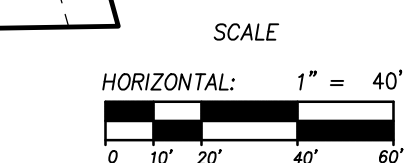
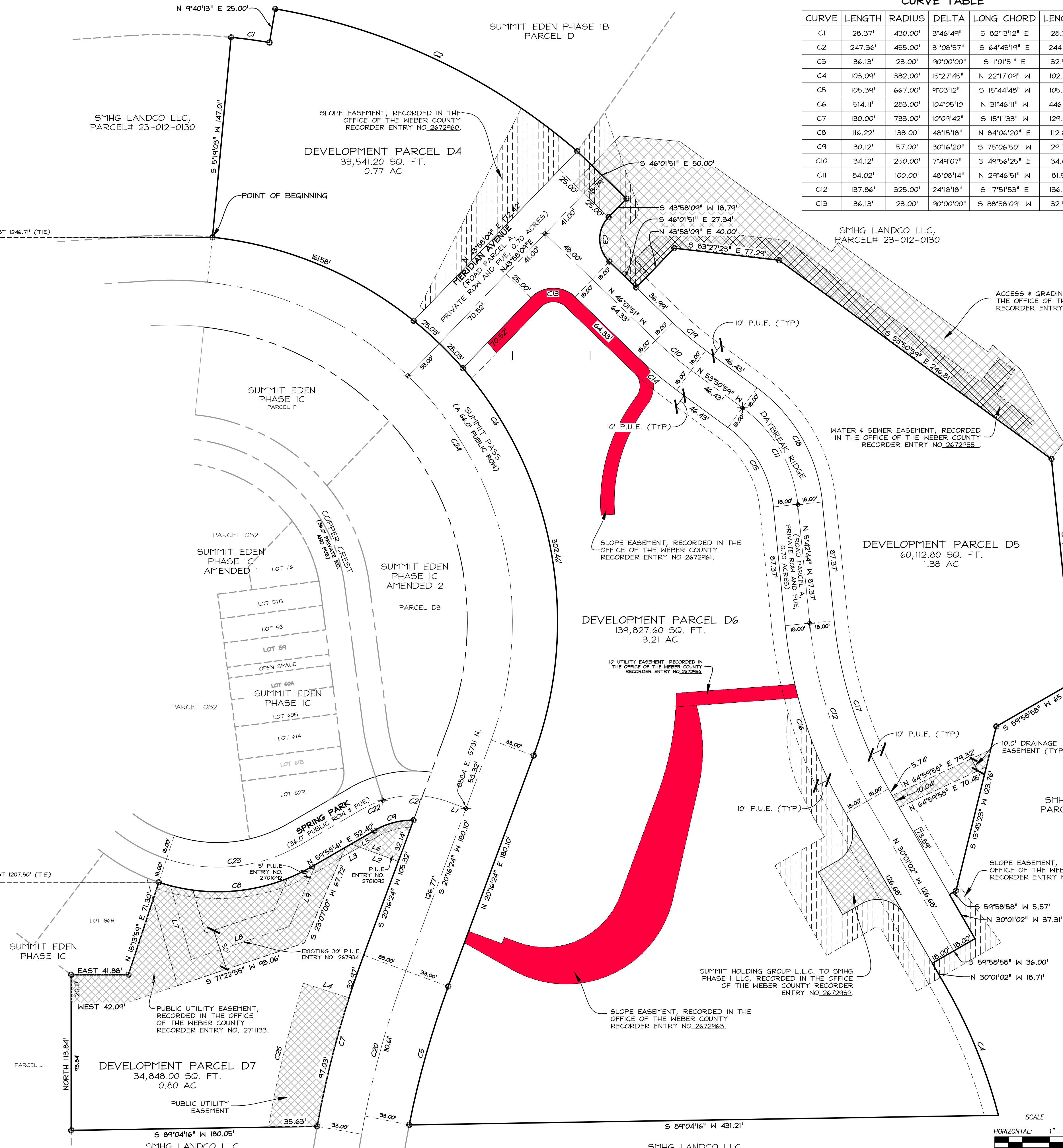
LINE TABLE		
LINE	LENGTH	DIRECTION
L1	14.67'	S 69°47'02" E
L2	30.29'	S 69°43'36" E
L3	15.75'	N 59°58'41" E
L4	35.00'	S 72°18'15" E



- LEGEND**
- BOUNDARY LINE
 - LOT LINE
 - SECTION LINE
 - QUARTER SECTION LINE
 - COUNTY LINE
 - ADJOINER DEED LINES
 - NO ACCESS LINE
 - AREA TIE LINES
 - CALCULATED SECTION CORNER AS NOTED
 - SECTION CORNER AS NOTED
 - STREET MONUMENT
 - SET 5/8" X 2' REBAR WITH PLASTIC CAP STAMPED "NOLTE ENG"
 - BUILDING ENVELOPE
 - EASEMENT
 - SLOPE EASEMENT
 - EASEMENT TO BE VACATED BY SEPARATE DOCUMENT AND TO BE REMOVED FROM THIS PLAT PRIOR TO RECORDING

**SUMMIT EDEN PHASE 1D
AMENDED AND RESTATED
DEVELOPMENT PARCEL D4, D5, D6, AND D7**

LOCATED IN THE NORTHEAST 1/4 OF SECTION 8 OF
TOWNSHIP 7 NORTH, RANGE 2 EAST, SALT LAKE
BASE AND MERIDIAN, WEBER COUNTY, UTAH



Sheet 2 of 2

NIVIS
NOLTE VERTICALFIVE
5217 SOUTH STATE STREET, SUITE 300 MURRAY, UT 84107
801.743.1300 TEL. 801.743.0300 FAX WWW.NOLTE.COM

RECORDED #
STATE OF UTAH, COUNTY OF WEBER,
RECORDED AND FILED AT THE
REQUEST OF: _____
ENTRY NO: _____
DATE: _____ TIME: _____
BOOK: _____ PAGE: _____
FEE \$ _____
WEBER COUNTY RECORDER