

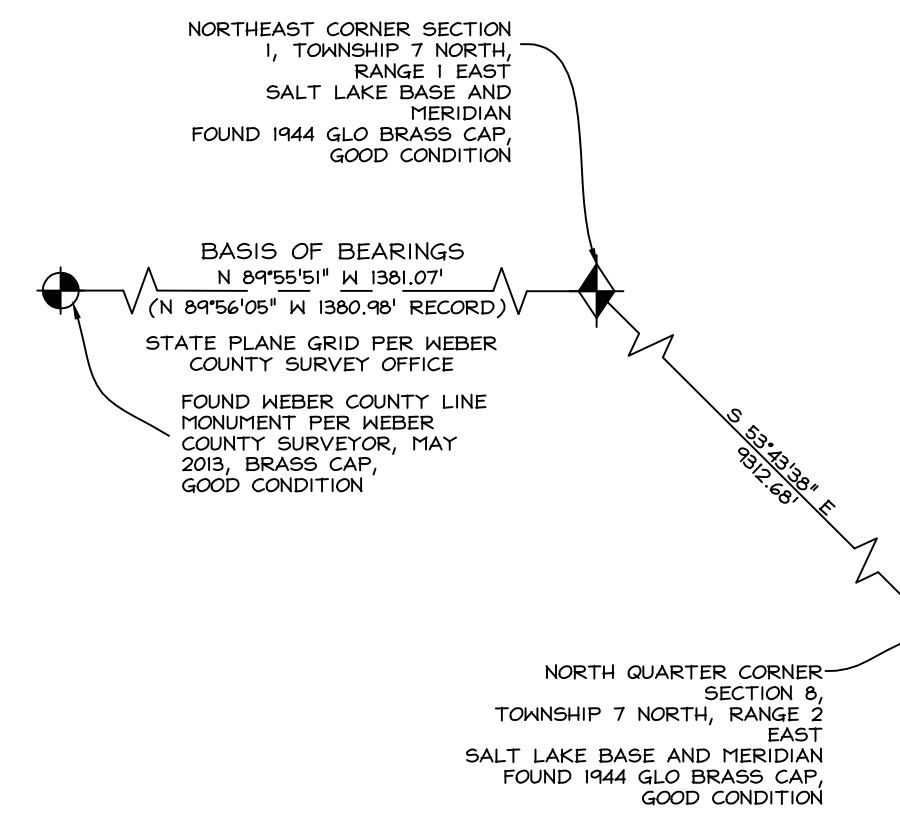
SUMMIT EDEN PHASE 1D - AMENDMENT 1

LOCATED IN THE NORTHEAST 1/4 OF SECTION 8,
TOWNSHIP 7 NORTH, RANGE 2 EAST, SALT LAKE BASE AND MERIDIAN
JANUARY 2016

CURVE TABLE					
CURVE	LENGTH	RADIUS	DELTA	LONG CHORD	LENGTH
C1	28.37'	430.00'	3°46'49"	S 82°13'12" E 28.37'	
				S 64°45'19" E 244.33'	
				S 1°01'51" E 32.53'	
				N 22°17'09" W 102.78'	
				S 15°44'48" W 105.28'	
C6	514.11'	283.00'	104°05'10"	N 31°46'11" W 446.28'	
C7	130.00'	733.00'	10°09'42"	S 15°11'33" W 129.83'	
C8	116.22'	138.00'	48°15'18"	N 84°06'20" E 112.82'	
C9	30.12'	57.00'	30°16'20"	S 75°06'50" W 29.77'	
C10	34.12'	250.00'	7°49'07"	S 49°56'25" E 34.09'	
C11	84.02'	100.00'	48°08'14"	N 29°46'51" W 81.57'	
C12	137.86'	325.00'	24°18'18"	S 17°51'53" E 136.83'	
C13	36.13'	23.00'	90°00'00"	S 88°58'09" W 32.53'	
C14	36.57'	268.00'	7°49'07"	S 49°56'25" E 36.54'	
C15	68.89'	82.00'	48°08'14"	N 29°46'51" W 66.88'	

CURVE TABLE					
CURVE	LENGTH	RADIUS	DELTA	LONG CHORD	LENGTH
C16	145.50'	343.00'	24°18'18"	S 17°51'53" E 144.41'	
C17	130.23'	307.00'	24°18'18"	S 17°51'53" E 129.26'	
C18	99.14'	118.00'	48°08'14"	N 29°46'51" W 96.25'	
C19	31.66'	232.00'	7°49'07"	S 49°56'25" E 31.63'	
C20	124.15'	700.00'	10°09'42"	S 15°11'33" W 123.98'	
C21	47.94'	75.00'	36°37'16"	N 88°55'51" W 47.13'	
C22	16.74'	75.00'	12°47'11"	N 66°22'16" E 16.70'	
C23	101.07'	120.00'	48°15'18"	N 84°06'20" E 98.10'	
C24	454.16'	250.00'	104°05'10"	N 31°46'11" W 394.24'	
C25	108.48'	768.00'	8°05'35"	S 13°38'57" W 108.39'	
C26	36.13'	23.00'	90°00'00"	N 14°58'58" E 32.53'	
C27	36.13'	23.00'	90°00'00"	N 75°01'02" W 32.53'	
C28	39.05'	365.00'	6°07'46"	S 28°03'26" E 39.03'	
C29	53.55'	100.00'	30°40'58"	S 49°56'25" E 52.91'	
C30	10.24'	353.00'	1°39'41"	S 15°12'54" E 10.24'	

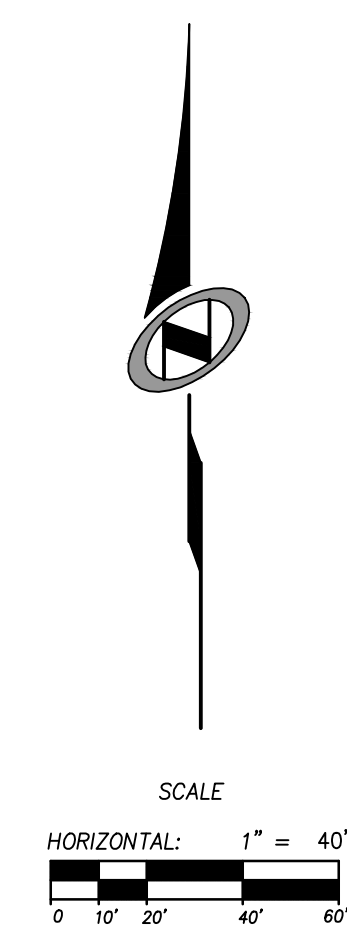
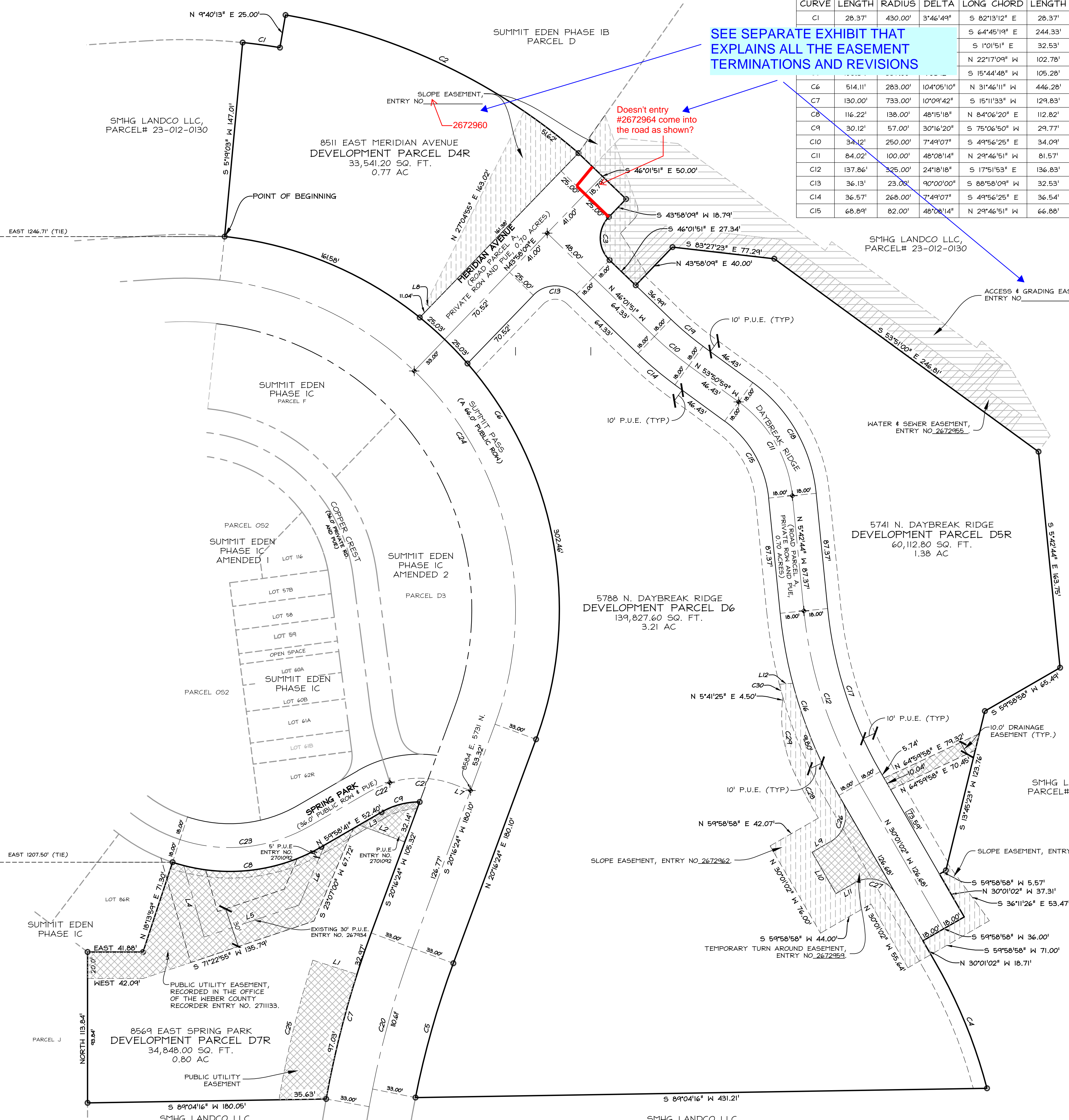
LINE TABLE		
LINE	LENGTH	DIRECTION
L1	35.00'	S 72°18'15" E
L2	36.79'	N 69°43'36" W
L3	19.50'	N 59°58'41" E
L4	56.10'	S 15°53'00" E
L5	75.60'	N 71°22'55" E
L6	49.33'	N 23°07'00" E
L7	14.67'	S 69°47'02" E
L8	3.94'	N 51°17'33" W
L9	16.00'	N 59°58'58" E
L10	36.00'	N 30°01'02" W
L11	16.00'	S 59°58'58" W
L12	10.16'	N 85°44'00" E



2014-1-17 NONE N:\S\8703\CAD\PHASE 1 PLAT AMENDMENTS\PHASE 1D\AMENDMENT 1.dwg
 5102.DWG
 Layout1

LEGEND

- BOUNDARY LINE
- LOT LINE
- SECTION LINE
- QUARTER SECTION LINE
- COUNTY LINE
- ADJOINER DEED LINES
- NO ACCESS LINE
- AREA TIE LINES
- CALCULATED SECTION CORNER AS NOTED
- SECTION CORNER AS NOTED
- STREET MONUMENT
- SET 5/8" X 2" REBAR WITH PLASTIC CAP STAMPED "NOLTE ENG"
- EASEMENT AS NOTED
- EASEMENT AS NOTED
- EASEMENT AS NOTED
- SLOPE EASEMENT AS NOTED



SMHG PHASE I, LLC.
3632 N. WOLF CREEK DR.
EDEN, UT, 84310

Sheet 2 of 2

N/V/5
NOLTE VERTICALFIVE
 5217 SOUTH STATE STREET, SUITE 300 MURRAY, UT 84107
 801.743.1300 TEL. 801.743.0300 FAX WWW.NOLTE.COM

RECORDED #
 STATE OF UTAH, COUNTY OF WEBER,
 RECORDED AND FILED AT THE
 REQUEST OF: _____
 ENTRY NO: _____
 DATE: _____ TIME: _____
 BOOK: _____ PAGE: _____
 FEE \$ _____
 WEBER COUNTY RECORDER