

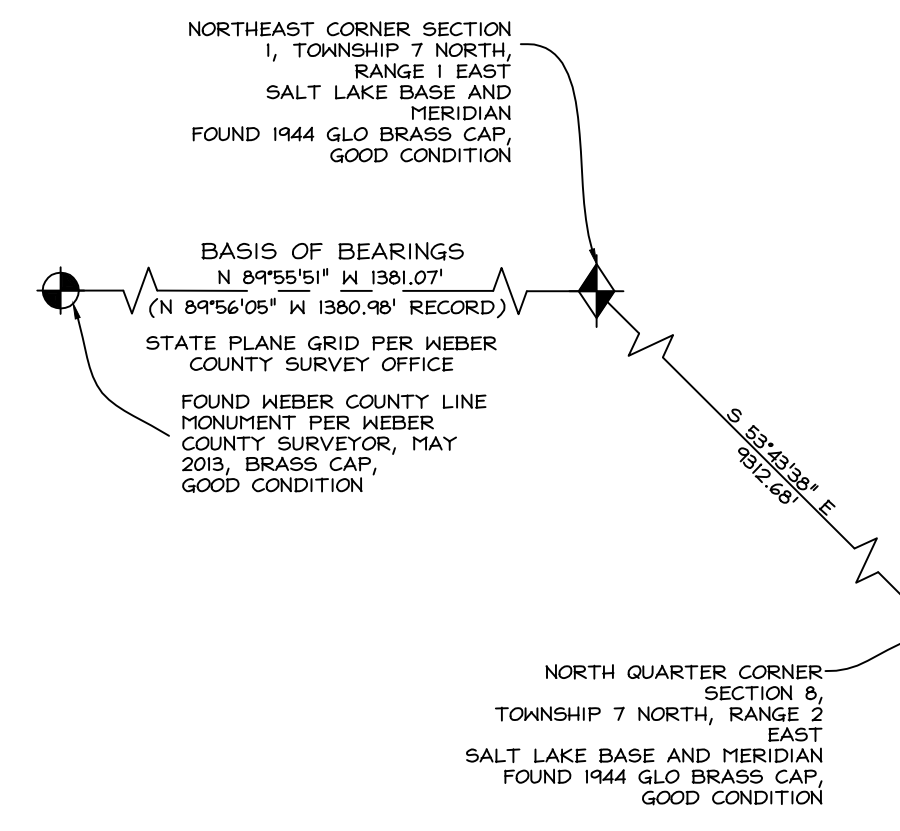
SUMMIT EDEN PHASE 1D - AMENDMENT 1

LOCATED IN THE NORTHEAST 1/4 OF SECTION 8,
TOWNSHIP 7 NORTH, RANGE 2 EAST, SALT LAKE BASE AND MERIDIAN
JANUARY 2016

CURVE TABLE					
CURVE	LENGTH	RADIUS	DELTA	LONG CHORD	LENGTH
C1	28.37'	430.00'	3°46'49"	S 82°13'12" E	28.37'
C2	247.36'	455.00'	31°08'57"	S 64°45'19" E	244.33'
C3	36.13'	23.00'	90°00'00"	S 1°01'51" E	32.53'
C4	103.09'	382.00'	15°27'45"	N 22°17'09" W	102.78'
C5	105.39'	667.00'	9°03'12"	S 15°44'48" W	105.28'
C6	514.11'	283.00'	104°05'10"	N 31°46'11" W	446.28'
C7	130.00'	733.00'	10°04'42"	S 15°11'33" W	129.83'
C8	116.22'	138.00'	48°15'18"	N 84°06'20" E	112.82'
C9	30.12'	57.00'	30°16'20"	S 75°06'50" W	29.77'
C10	34.12'	250.00'	7°49'07"	S 49°56'25" E	34.09'
C11	84.02'	100.00'	48°08'14"	N 29°46'51" W	81.57'
C12	137.86'	325.00'	24°18'18"	S 17°51'53" E	136.83'
C13	36.13'	23.00'	90°00'00"	S 88°58'09" W	32.53'
C14	36.57'	268.00'	7°49'07"	S 49°56'25" E	36.54'
C15	68.89'	82.00'	48°08'14"	N 29°46'51" W	66.88'

CURVE TABLE					
CURVE	LENGTH	RADIUS	DELTA	LONG CHORD	LENGTH
C16	145.50'	343.00'	24°18'18"	S 17°51'53" E	144.41'
C17	130.23'	307.00'	24°18'18"	S 17°51'53" E	129.26'
C18	99.14'	118.00'	48°08'14"	N 29°46'51" W	96.25'
C19	31.66'	232.00'	7°49'07"	S 49°56'25" E	31.63'
C20	124.15'	700.00'	10°04'42"	S 15°11'33" W	123.98'
C21	47.94'	75.00'	36°37'16"	N 88°55'53" W	47.13'
C22	16.74'	75.00'	12°47'11"	N 66°22'16" E	16.70'
C23	101.07'	120.00'	48°15'18"	N 84°06'20" E	98.10'
C24	454.16'	250.00'	104°05'10"	N 31°46'11" W	394.24'
C25	108.48'	768.00'	8°05'35"	S 13°38'57" W	108.39'
C26	36.13'	23.00'	90°00'00"	N 14°58'58" E	32.53'
C27	36.13'	23.00'	90°00'00"	N 75°01'02" W	32.53'
C28	39.05'	365.00'	6°07'46"	S 28°03'26" E	39.03'
C29	53.55'	100.00'	30°40'58"	S 4°39'04" E	52.91'
C30	10.24'	353.00'	1°39'41"	S 15°12'54" E	10.24'

LINE TABLE		
LINE	LENGTH	DIRECTION
L1	35.00'	S 72°18'15" E
L2	36.79'	N 69°43'36" W
L3	19.50'	N 59°58'41" E
L4	56.10'	S 15°53'00" E
L5	75.60'	N 71°22'55" E
L6	49.33'	N 23°07'00" E
L7	14.67'	S 69°47'02" E
L8	3.94'	N 51°17'33" W
L9	16.00'	N 59°58'58" E
L10	36.00'	N 30°01'02" W
L11	16.00'	S 59°58'58" W
L12	10.16'	N 85°44'00" E

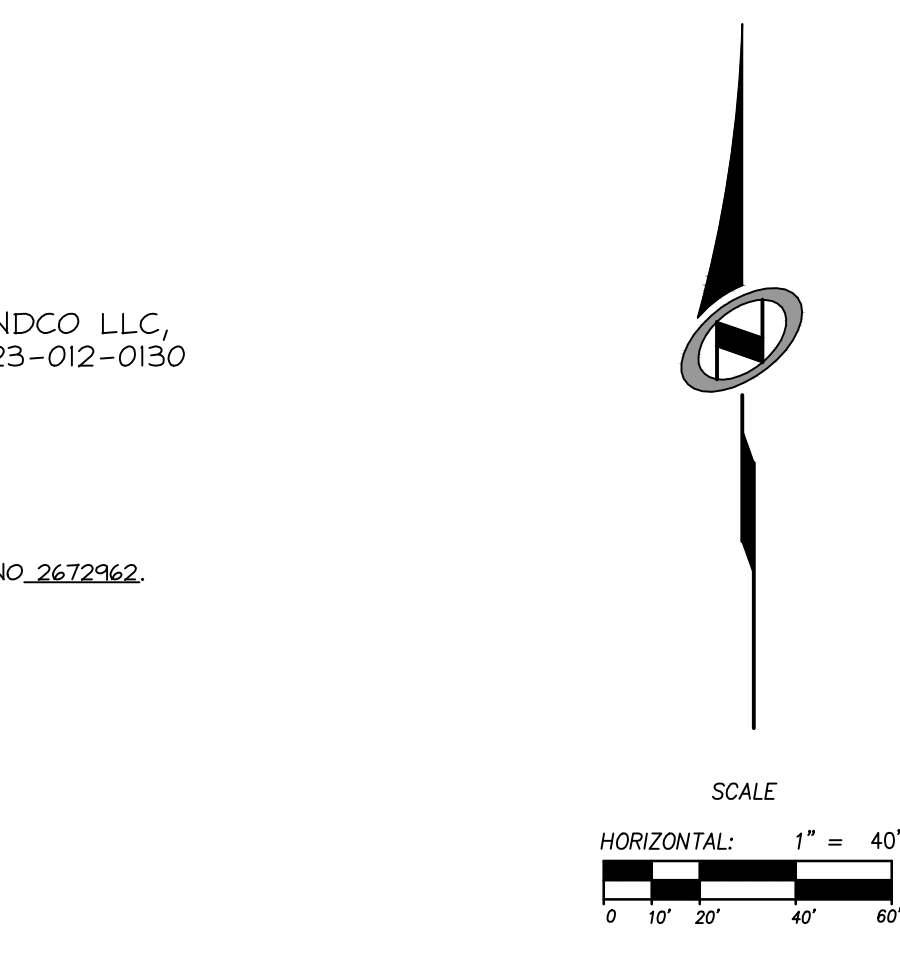
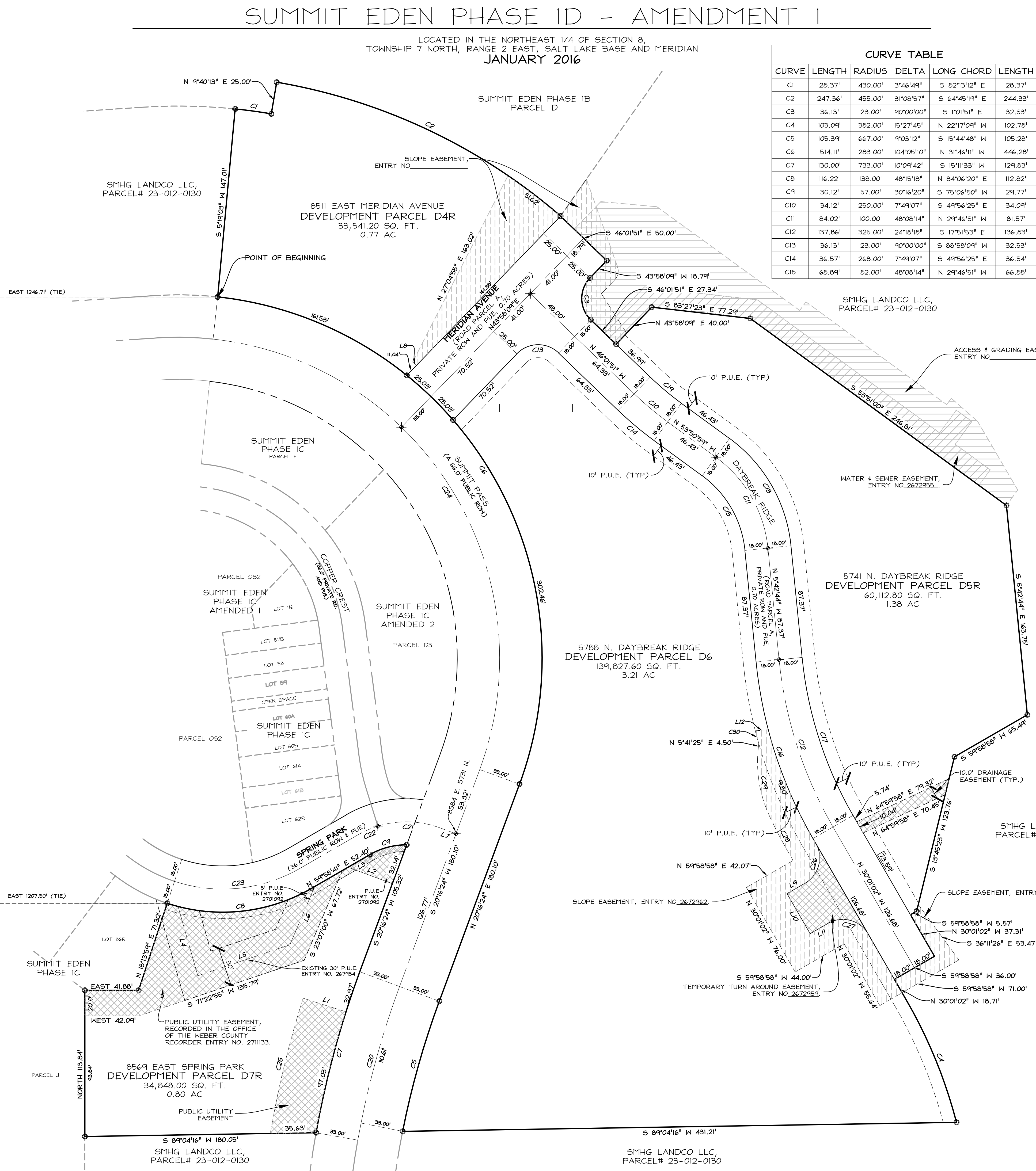


2014-1-17 NONE N:\S\8703\CADD\PHASE 1 PLAT AMENDMENTS\PHASE 1D\AMENDMENT 1 Layout1 SY02.DWG

LEGEND

- BOUNDARY LINE
- LOT LINE
- SECTION LINE
- QUARTER SECTION LINE
- COUNTY LINE
- ADJOINER DEED LINES
- NO ACCESS LINE
- AREA TIE LINES
- CALCULATED SECTION CORNER AS NOTED
- SECTION CORNER AS NOTED
- STREET MONUMENT
- SET 5/8" X 2' REBAR WITH PLASTIC CAP STAMPED "NOLTE ENG"
- EASEMENT AS NOTED
- EASEMENT AS NOTED
- EASEMENT AS NOTED
- SLOPE EASEMENT AS NOTED

SMHG PHASE I, LLC.
 3632 N. WOLF CREEK DR.
 EDEN, UT, 84310



SHEET 2 OF 2

NIVIS
NOLTE VERTICALFIVE
 5217 SOUTH STATE STREET, SUITE 300 MURRAY, UT 84107
 801.743.1300 TEL. 801.743.0300 FAX WWW.NOLTE.COM

RECORDED #
 STATE OF UTAH, COUNTY OF WEBER, RECORDED AND FILED AT THE REQUEST OF: _____ ENTRY NO: _____ DATE: _____ TIME: _____ BOOK: _____ PAGE: _____ FEE \$ _____

WEBER COUNTY RECORDER