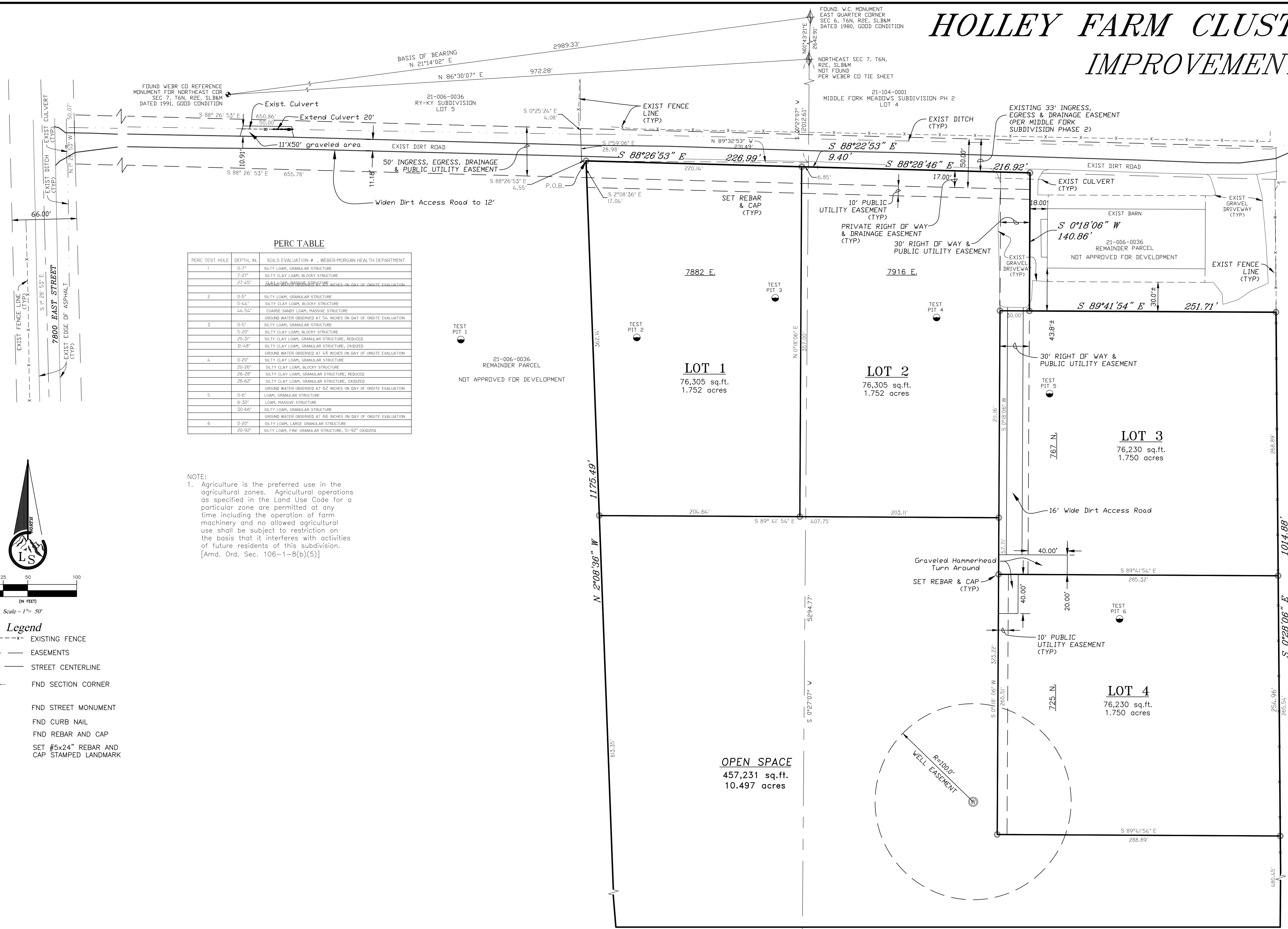


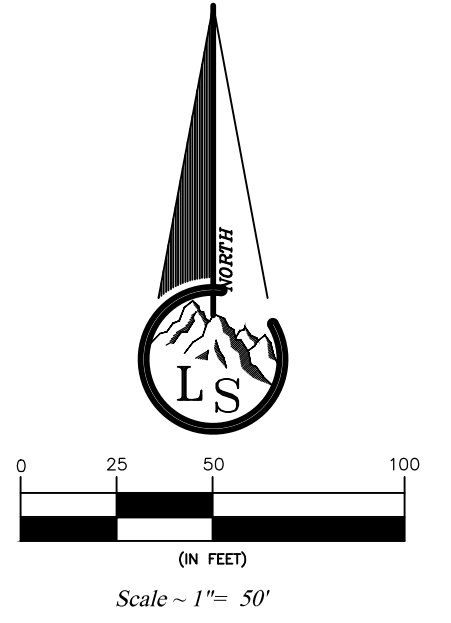
# HOLLEY FARM CLUSTER SUBDIVISION IMPROVEMENT PLANS



**PERC TABLE**

PERC TEST HOLE	DEPTH, IN.	SOILS EVALUATION #	WEBER-MORGAN HEALTH DEPARTMENT
1	0-7"	SILTY LOAM, GRANULAR STRUCTURE	
	7-27"	SILTY CLAY LOAM, BLOCKY STRUCTURE	
	27-45"	CLAY LOAM, MASSIVE STRUCTURE	CLAY LOAM, 20-25% HUMUS, 20-25% HUMUS ON DAY OF ONSITE EVALUATION
2	0-5"	SILTY LOAM, GRANULAR STRUCTURE	
	5-44"	SILTY CLAY LOAM, BLOCKY STRUCTURE	
	44-54"	COARSE SANDY LOAM, MASSIVE STRUCTURE	GROUND WATER OBSERVED AT 54 INCHES ON DAY OF ONSITE EVALUATION
3	0-5"	SILTY LOAM, GRANULAR STRUCTURE	
	5-20"	SILTY CLAY LOAM, BLOCKY STRUCTURE	
	20-31"	SILTY CLAY LOAM, GRANULAR STRUCTURE, REDUCED	
4	0-20"	SILTY CLAY LOAM, GRANULAR STRUCTURE	
	20-28"	SILTY CLAY LOAM, BLOCKY STRUCTURE	
	28-28"	SILTY CLAY LOAM, GRANULAR STRUCTURE, REDUCED	
5	0-4"	LOAM, GRANULAR STRUCTURE	
	4-55"	LOAM, MASSIVE STRUCTURE	
	55-66"	SILTY LOAM, GRANULAR STRUCTURE	GROUND WATER OBSERVED AT 66 INCHES ON DAY OF ONSITE EVALUATION
6	0-20"	SILTY LOAM, LARGE GRANULAR STRUCTURE	
	20-92"	SILTY LOAM, FINE GRANULAR STRUCTURE, SI-92" OXIDIZED	

NOTE:  
1. Agriculture is the preferred use in the agricultural zones. Agricultural operations as specified in the Land Use Code for a particular zone are permitted at any time including the operation of farm machinery and no allowed agricultural use shall be subject to restriction on the basis that it interferes with activities of future residents of this subdivision. [Amd. Ord. Sec. 106-1-8(b)(5)]



- Legend**
- EXISTING FENCE
  - - - EASEMENTS
  - STREET CENTERLINE
  - ◆ FND SECTION CORNER
  - FND STREET MONUMENT
  - FND CURB NAIL
  - FND REBAR AND CAP
  - SET #5x24" REBAR AND CAP STAMPED LANDMARK

**Landmark Surveying, Inc.**  
A Complete Land Surveying Service  
www.LandmarkSurveyUtah.com

4646 South 3500 West - #A-3  
West Haven, UT 84401  
801-731-4075

**DEVELOPER: RICHARD HOLLEY**  
Address: 1287 N. 7000 E. HUNTSVILLE, UTAH 84317

SURVEYED: NOVEMBER 2013

NE 1/4 SECTION 7 AND NW 1/4 SECTION 8,  
T6N, R2E, SLB&M, WEBER COUNTY, UTAH

Revisions	DRAWN BY: TDK
	CHECKED BY: EDR
	DATE: 8/25/2015
	FILE: 3365V5