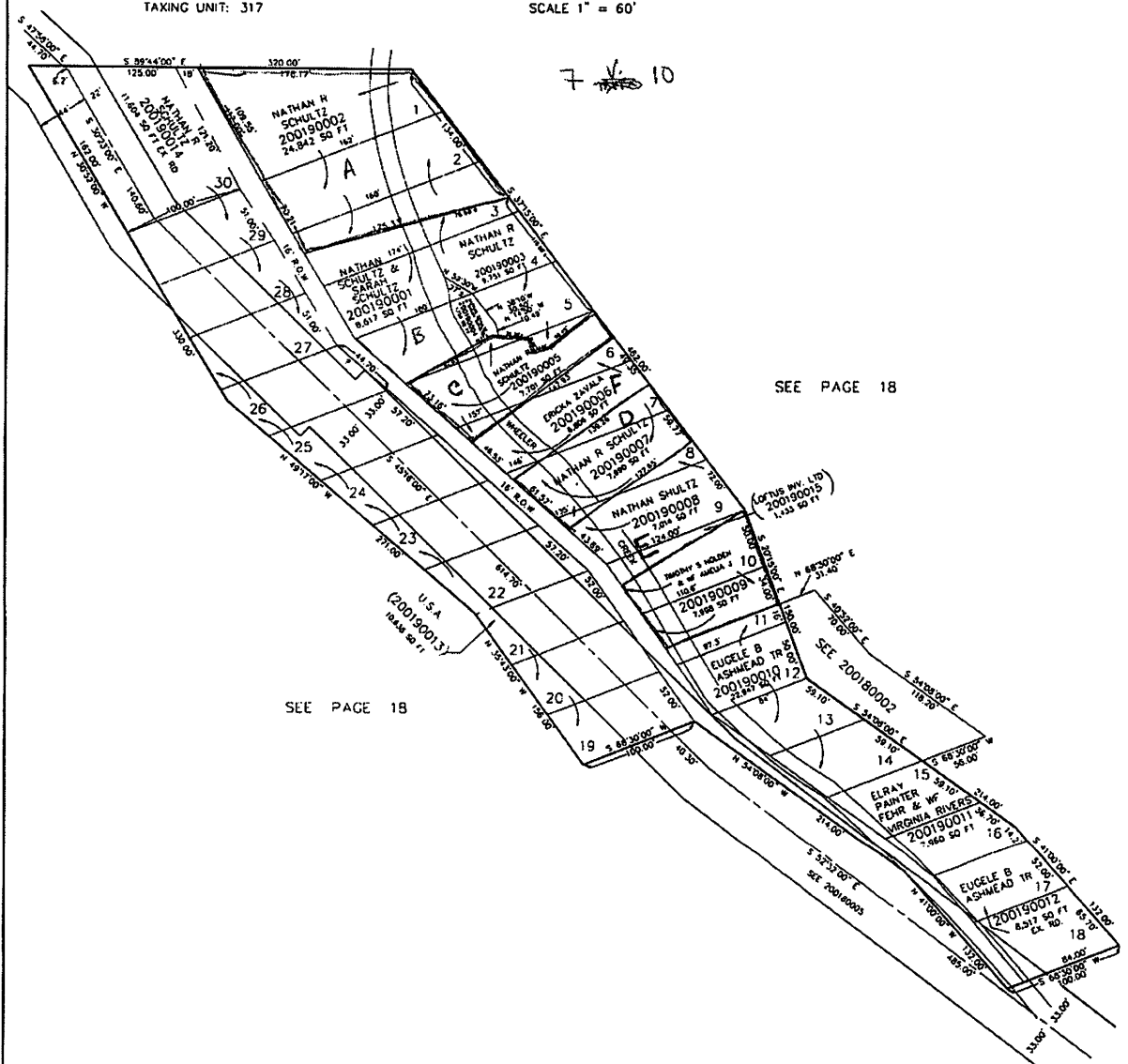


PART OF S.E. 1/4. SEC. 16, T.6N., R.1E., S.L.B. & M.  
WILCOX CAMPING & BOATING RESORT

TAXING UNIT: 317

IN WEBER COUNTY  
SCALE 1" = 60'

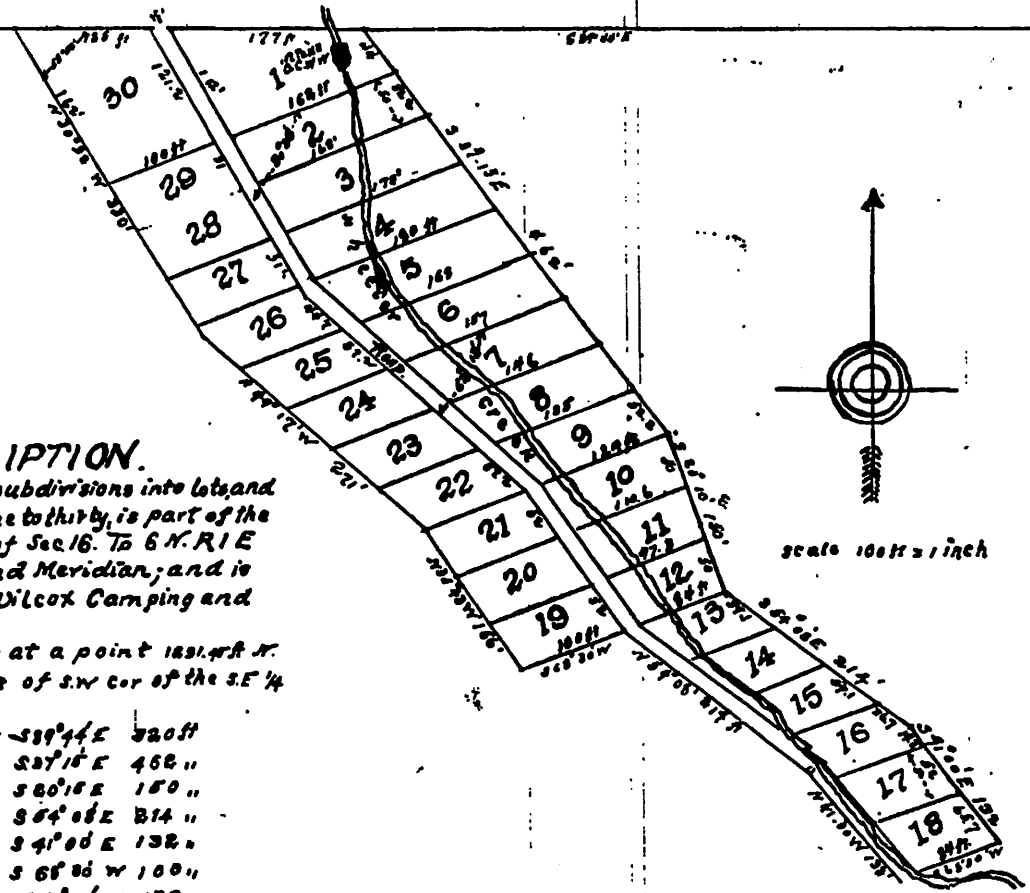


SEE PAGE 18

SEE PAGE 18

# WILCOX CAMPING AND BOATING RESORT.

57



REMARKS.	
1	
2	
3	
4	
5	
6	
7	
8	
9	
10	
11	
12	
13	
14	
15	
16	
17	
18	
19	
20	
21	
22	
23	
24	
25	
26	
27	
28	
29	
30	
31	

## DESCRIPTION.

This Plat and its subdivisions into lots and numbered from one to thirty, is part of the S.W. 1/4 of the S.E. 1/4 of Sec. 16. T. 6 N. R. 1 E Salt Lake Base and Meridian; and is to be known as "Wilcox Camping and Boating Resort."

Beginning at a point 181.47 ft. N. and 589.44 E. 275 ft. of S.W. cor. of the S.E. 1/4 of said Sec. 16

Running thence;

Do.	Do.	S 89° 44' E	320 ft
"	"	S 87° 15' E	458 "
"	"	S 60° 15' E	150 "
"	"	S 64° 08' E	314 "
"	"	S 41° 08' E	132 "
"	"	S 68° 30' W	100 "
"	"	N 41° 08' W	132 "
"	"	N 57° 35' W	214 "
"	"	S 68° 30' W	100 "
"	"	N 35° 48' W	156 "
"	"	N 79° 17' W	271 "
"	"	N 30° 58' W	330 "

to beginning, being the exterior boundary of said tract of land, and containing 4.67 acres including road 16 ft wide as shown on this plat and on which the present owner M.E. Wilcox reserves a right of way.

I W.C. Sumner, a Civil Engineer do hereby certify, that the plat hereto attached of "Wilcox Camping and Boating Resort, in Weber County, State of Utah, is correct and accurately constructed from the field notes of survey made by me in November 1910.

*W.C. Sumner*

Weber County } ss.  
State of Utah }

Subscribed and sworn to before me this 13<sup>th</sup> day of November 1910  
John E. Bagley  
Notary Public  
My commission expires March 30<sup>th</sup> 1913.

Approved and accepted for record by the Commissioners of Weber County Utah, this 27<sup>th</sup> day of December 1910.





Workspaces ▾

200190002

200190002

200180003

200190003

200190014

200190001

200190004

OGDEN CYN

190014

200190005

200190005

201450001

200190013

200180003

