

MATCHLINE SEE SHEET L1.2

MATCHLINE SEE SHEET L1.2

**Plant Schedule**

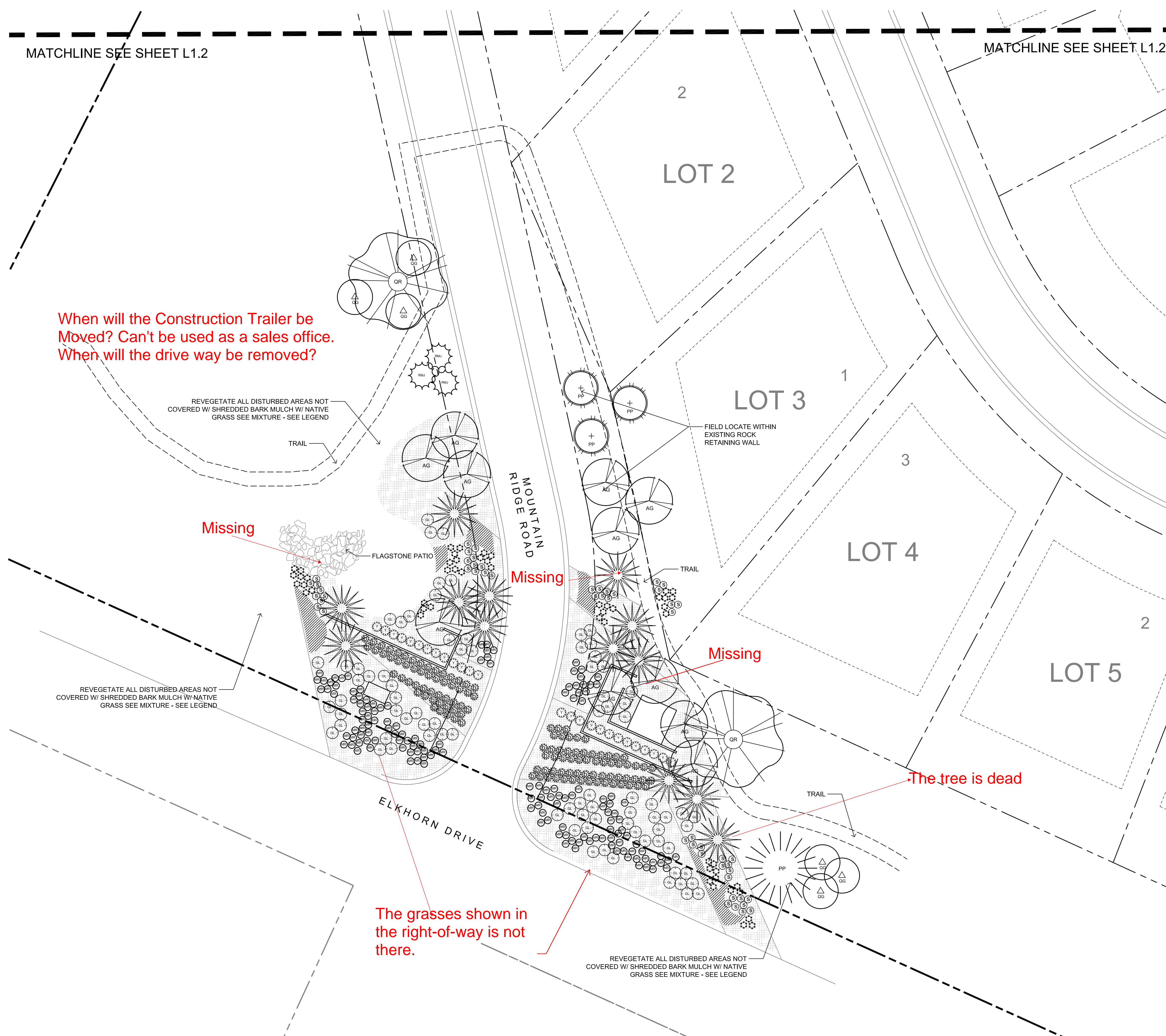
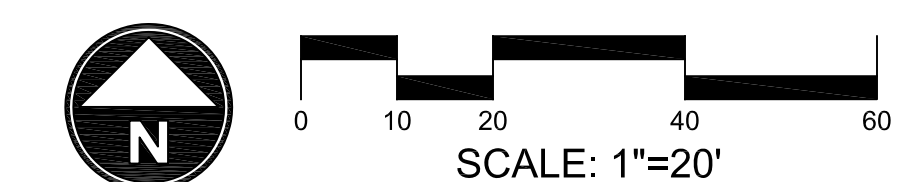
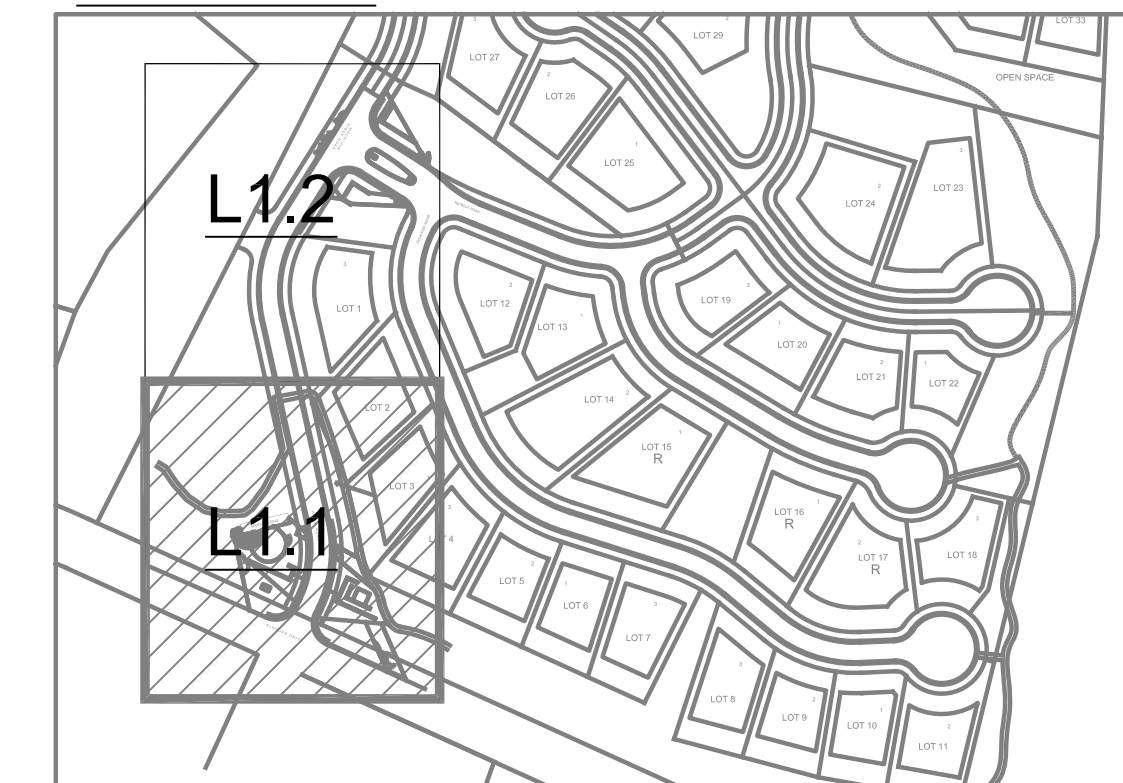
Symbol	Botanical Name Common Name	Size	Mature Size HxW
<b>TREES</b>			
AG	Acer ginnala Amur Maple	2" CAL.	20'x20'
OR	Quercus rubra Northern Red Oak	2" CAL.	50'x45'
<b>EVERGREEN TREES</b>			
RMU	Juniperus scopulorum Rocky Mountain Juniper	6-8' Hgt	20'x10'
PP	Picea pungens Colorado Spruce	6-8' Hgt	50'x30'
PP	Picea pungens glauca 'Hoopsii' Hoopsii Blue Spruce	6-8' Hgt	30'x18'
PP	Pinus edulis Pinyon Pine	6-8' Hgt	30'x15'
<b>SHRUBS</b>			
AG	Quercus gambelii Scrub Oak	5 Gal.	15'x15'
CL	Rhus aromatica 'Grow Low' Grow Low Sumac	5 Gal.	30'x7'
YU	Yucca filamentosa Yucca	5 Gal.	3'x4'
<b>PERENNIALS</b>			
SD	Leucanthemum x compact 'Snow Lady' Shasta Dwarf Daisy	1 Gal.	12" x 12"
RS	Perovskia atriplicifolia Common Russian Sage	1 Gal.	3.5' x 3'
RS	Rudbeckia fulgida 'Goldstrum' Black Eyed Susan	1 Gal.	3' x 2'
<b>GRASSES</b>			
BS	Bouteloua gracilis 'Blonde Ambition' Blonde Ambition Blue Gramma Grass	1 Gal.	3' x 3'
<b>GROUNDCOVERS</b>			
MO	Mahonia repens Creeping Oregon Grape	1 Gal.	2' x 3'

**MATERIALS**

SM	Shredded Bark Mulch Match Existing on Site	3" Depth
----	---	----------

See sheet L1.3 for plant quantities, details and landscape and irrigation notes.

**KEY MAP**



When will the Construction Trailer be Moved? Can't be used as a sales office. When will the drive way be removed?

REVEGETATE ALL DISTURBED AREAS NOT COVERED W/ SHREDDED BARK MULCH W/ NATIVE GRASS SEE MIXTURE - SEE LEGEND

TRAIL

Missing

FLAGSTONE PATIO

MOUNTAIN RIDGE ROAD

Missing

FIELD LOCATE WITHIN EXISTING ROCK RETAINING WALL

TRAIL

Missing

The tree is dead

The grasses shown in the right-of-way is not there.

REVEGETATE ALL DISTURBED AREAS NOT COVERED W/ SHREDDED BARK MULCH W/ NATIVE GRASS SEE MIXTURE - SEE LEGEND

TRAIL

ELKHORN DRIVE



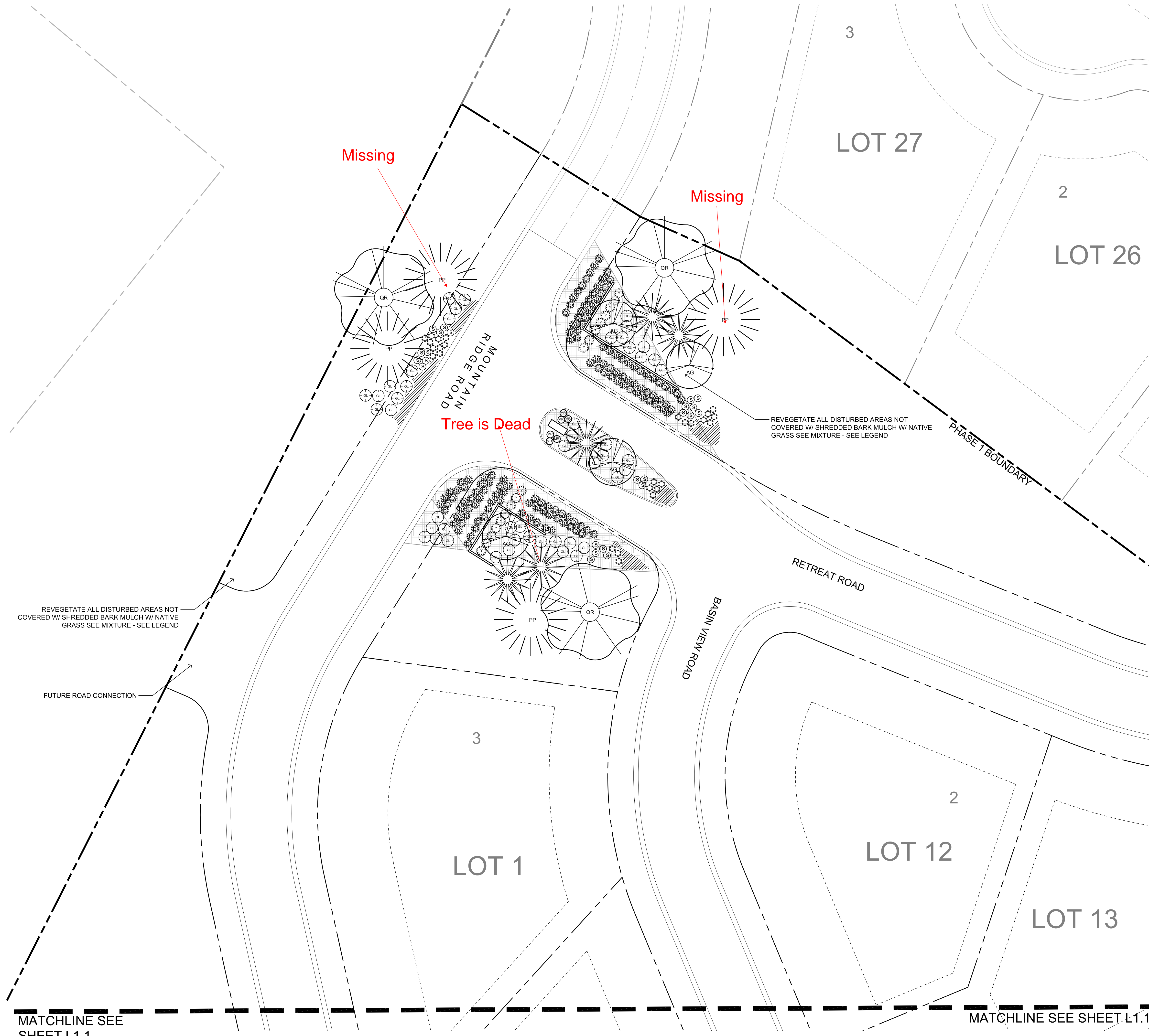
SITE PLAN APPROVAL  
WEBER COUNTY, UT



DATE:	JULY, 2013
PROJECT:	.024
DRAWN BY:	MP
REVIEW BY:	EL
VERSION:	SITE PLAN
REVISIONS:	

SHEET TITLE:  
**LANDSCAPE PLAN**

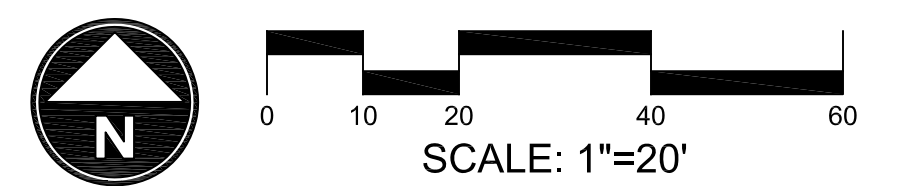
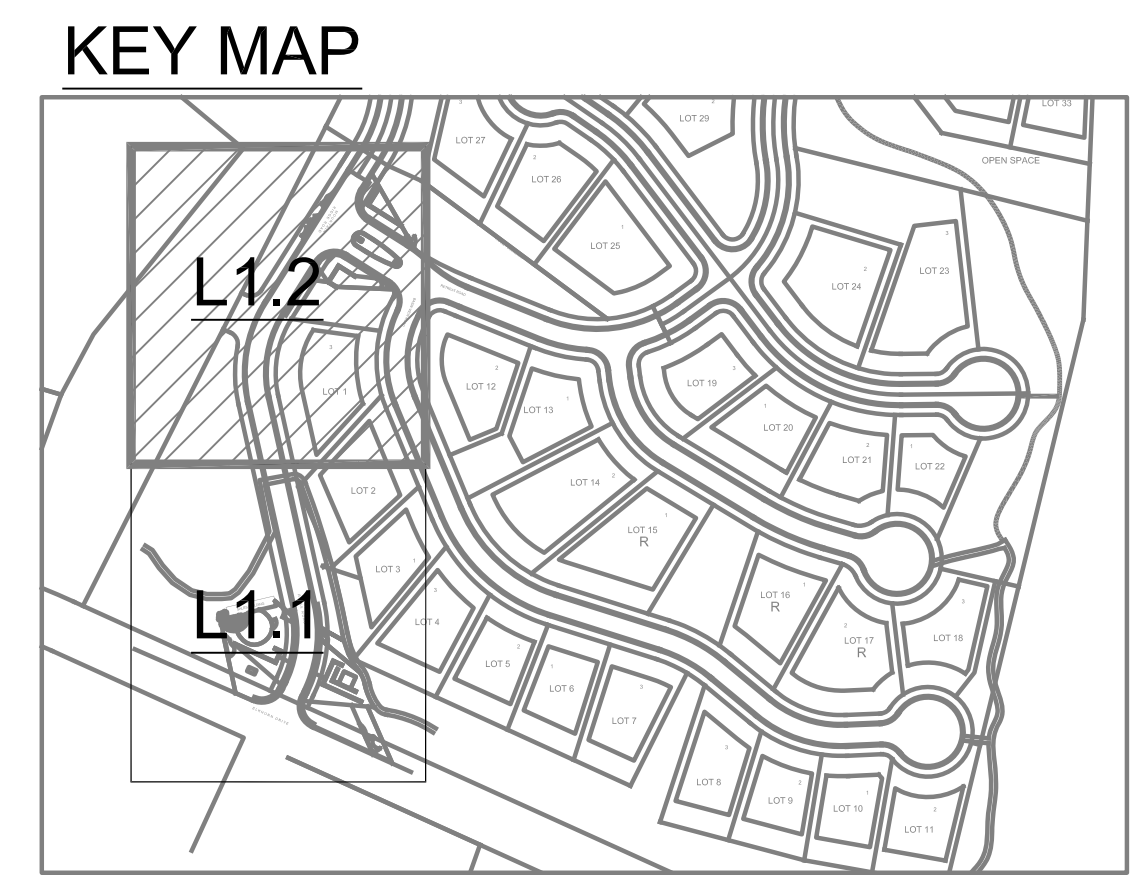
SHEET NUMBER:  
**L1.1**



### Plant Schedule

Symbol	Botanical Name Common Name	Size	Mature Size HxW
<b>TREES</b>			
AG	Acer ginnala Amur Maple	2" CAL.	20'x20'
QR	Quercus rubra Northern Red Oak	2" CAL.	50'x45'
<b>EVERGREEN TREES</b>			
JMU	Juniperus scopulorum Rocky Mountain Juniper	6-8' Hgt	20'x10'
PP	Picea pungens Colorado Spruce	6-8' Hgt	50'x30'
PP	Picea pungens glauca 'Hoopsii' Hoopsii Blue Spruce	6-8' Hgt	30'x18'
PP	Pinus edulis Pinyon Pine	6-8' Hgt	30'x15'
<b>SHRUBS</b>			
GO	Quercus gambelii Scrub Oak	5 Gal	15'x15'
SL	Rhus aromatica 'Grow Low' Grow Low Sumac	5 Gal	30'x7'
YU	Yucca filamentosa Yucca	5 Gal.	3'x4'
<b>PERENNIALS</b>			
SD	Leucanthemum x compact 'Snow Lady' Shasta Dwarf Daisy	1 Gal.	12" x 12"
RS	Perovskia atriplicifolia Common Russian Sage	1 Gal.	3.5'x3'
ES	Rudbeckia fulgida 'Goldstrum' Black Eyed Susan	1 Gal.	3'x2'
<b>GRASSES</b>			
BA	Bouteloua gracilis 'Blonde Ambition' Blonde Ambition Blue Gramma Grass	1 Gal.	3'x3'
<b>GROUNDCOVERS</b>			
MO	Mahonia repens Creeping Oregon Grape	1 Gal.	2'x3'
<b>MATERIALS</b>			
SM	Shredded Bark Mulch Match Existing on Site	3" Depth	

See sheet L1.3 for plant quantities, details and landscape and irrigation notes.



MATCHLINE SEE SHEET L1.1

MATCHLINE SEE SHEET L1.1



SITE PLAN APPROVAL  
WEBER COUNTY, UT

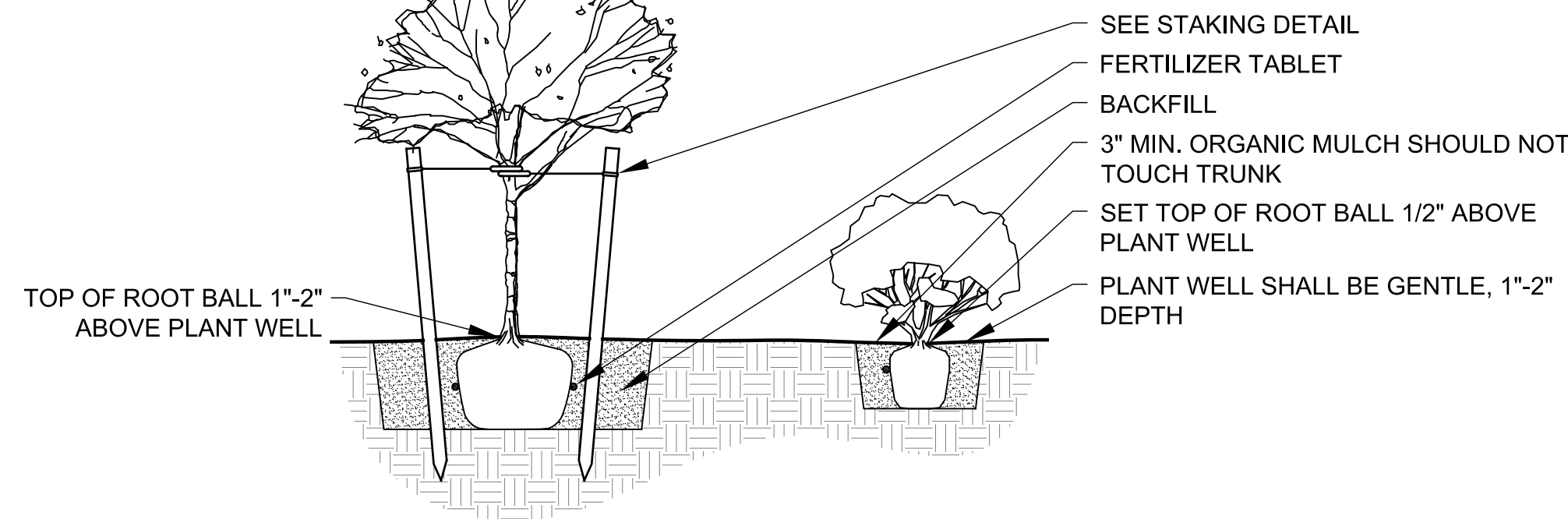


DATE:	JULY, 2013
PROJECT:	.024
DRAWN BY:	MP
REVIEW BY:	EL
VERSION:	SITE PLAN
REVISIONS:	

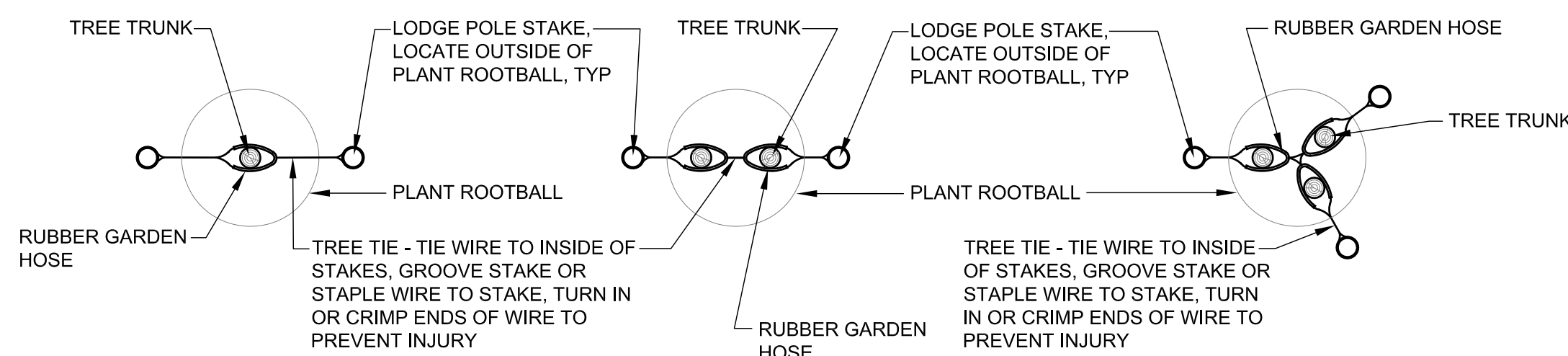
SHEET TITLE:  
LANDSCAPE PLAN

SHEET NUMBER:  
**L1.2**

**BACKFILL:**  
ONE PART MULCH TO THREE PARTS NATIVE SOIL.  
**PLANTING PIT SIZES:**  
1 GAL. OR 5 GAL. - 2X WIDTH OF ROOT BALL, DEPTH = ROOT BALL + 6"  
15 GAL. OR LARGER - 3X WIDTH OF ROOT BALL, DEPTH = ROOT BALL + 12"  
**FERTILIZER TABLETS (21 GRAM AGRIFORM TABLETS)**  
1 PER 1 GAL., 3 PER 5 GAL., 5 PER 15 GAL., 1 PER 3" OF BOX SIZE (24" BOX OR LARGER)

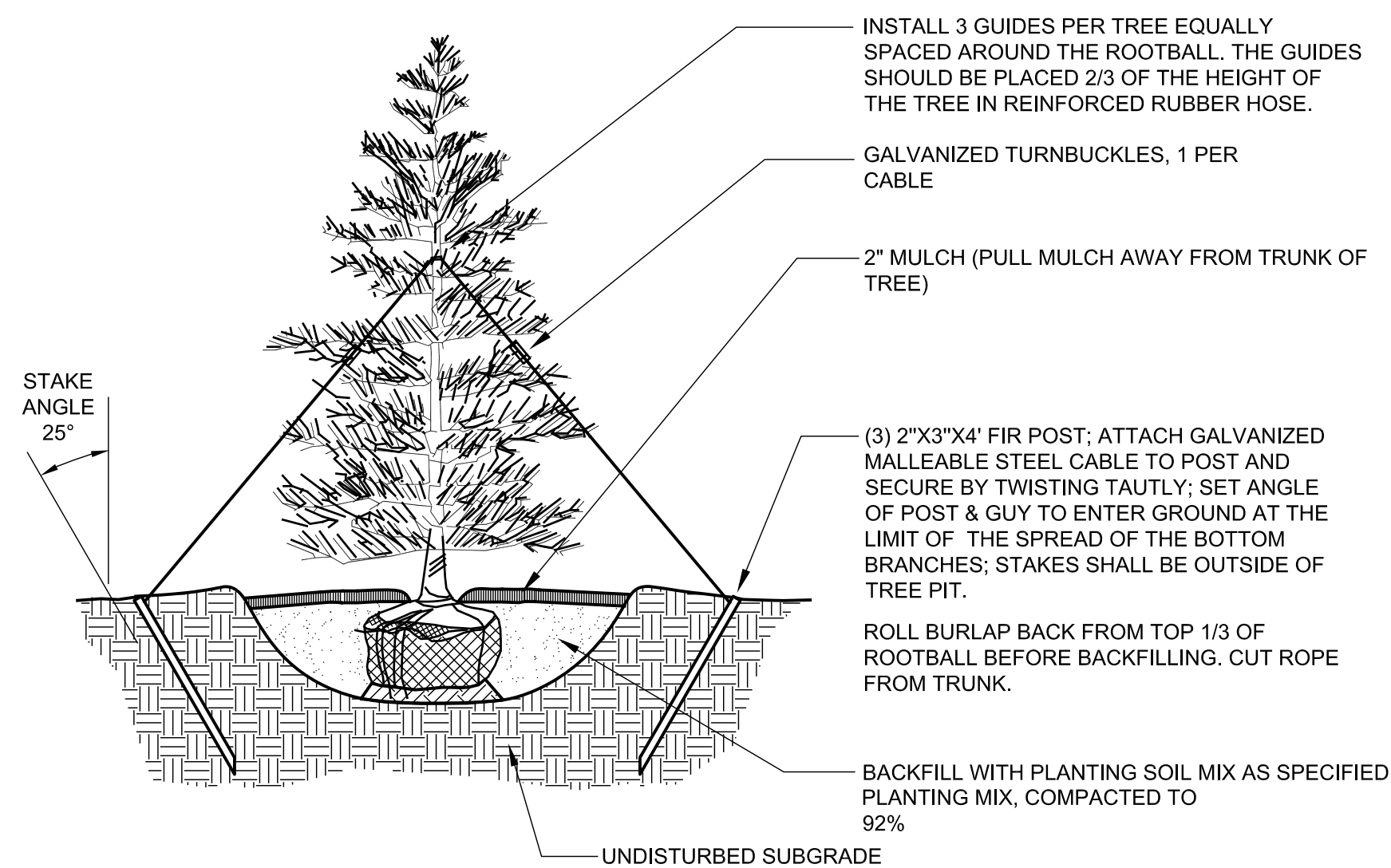


### 1 DECIDUOUS TREE AND SHRUB PLANTING



TREE STAKING PLAN - STANDARD      TREE STAKING PLAN - MULTIPLE      TREE STAKING PLAN - MULTIPLE

### 2 DECIDUOUS TREE STAKING

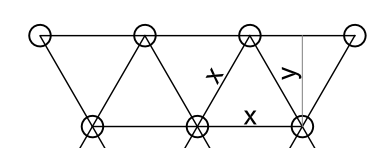


### 3 EVERGREEN TREE PLANTING AND STAKING

**NOTE:**  
ALL GROUNDCOVERS TO BE PLANTED ON CENTER (SEE PLANT LEGEND) IN A TRIANGULAR PATTERN.  
SPACING (X) | ROW (Y)

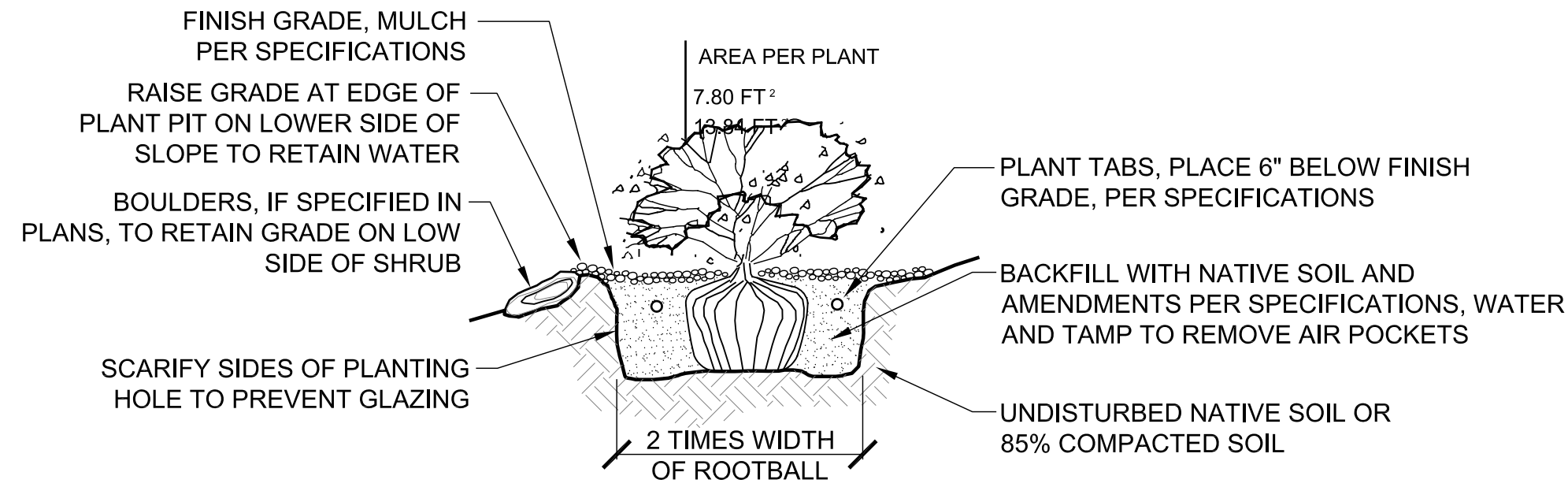
3 FT. O.C.	2.60 FT.
4 FT. O.C.	3.46 FT.

PLANT SPACING

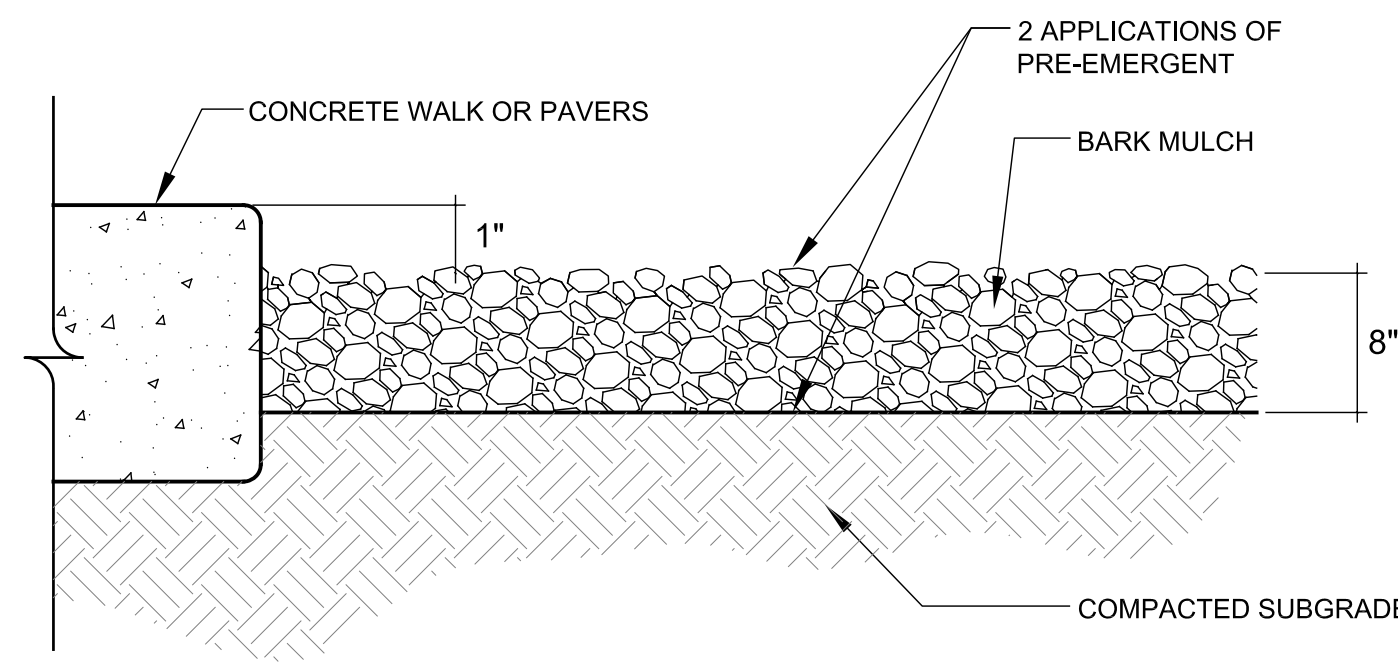


MULCH SOIL TO A DEPTH OF 2", 1" IN DIAMETER. KEEP MULCH 2" AWAY FROM PLANT BASE  
PREPARE SOIL PER SPECIFICATIONS AND ROTOTILL TO A DEPTH OF 6" PRIOR TO ANY SPRINKLER WORK  
BACKFILL WITH NATIVE SOIL. APPLY FERTILIZER TO SURFACE AWAY FROM TRUNK PER SPECIFICATIONS

### 4 GROUND COVER SPACING



### 5 SHRUB PLANTING ON A SLOPE



**NOTES:**  
1. SIZE AND COLOR OF MULCH IS SHOWN ON THE SITE PLAN AND LANDSCAPE PLAN.  
2. PRE-EMERGENT SHALL BE APPLIED TO FINISH GRADE BEFORE INSTALLATION OF MULCH.  
3. FINAL APPLICATION OF PRE-EMERGENT SHALL BE APPLIED TO FINISH GRADE AFTER INSTALLATION OF MULCH IS RAKED SMOOTH AND UNIFORM.

### 6 LANDSCAPE MULCH

#### GENERAL LANDSCAPE NOTES

- THE CONTRACTOR SHALL VERIFY THE EXACT LOCATION OF ALL EXISTING AND PROPOSED UTILITIES, AND ALL SITE CONDITIONS PRIOR TO BEGINNING CONSTRUCTION. THE CONTRACTOR SHALL COORDINATE HIS WORK WITH THE PROJECT MANAGER AND ALL OTHER CONTRACTORS WORKING ON THE SITE.
- THE FINISH GRADE OF ALL PLANTING AREAS SHALL BE SMOOTH, EVEN AND CONSISTENT, FREE OF ANY HUMPS, DEPRESSIONS OR OTHER GRADING IRREGULARITIES. THE FINISH GRADE OF ALL LANDSCAPE AREAS SHALL BE GRADED CONSISTENTLY 3/4" BELOW THE TOP OF ALL SURROUNDING WALKS, CURBS, ETC.
- THE CONTRACTOR SHALL STAKE THE LOCATION OF ALL PLANTS FOR APPROVAL PRIOR TO PLANTING. TREES SHALL BE LOCATED EQUIDISTANT FROM ALL SURROUNDING PLANT MATERIAL. SHRUBS AND GROUND COVERS SHALL BE TRIANGULAR AND EQUALLY SPACED.
- THE PLANT MATERIALS LIST IS PROVIDED AS AN INDICATION OF THE SPECIFIC REQUIREMENTS OF THE PLANTS SPECIFIED, WHEREVER IN CONFLICT WITH THE PLANTING PLAN, THE PLANTING PLAN SHALL GOVERN.
- THE CONTRACTOR SHALL PROVIDE ALL MATERIALS, LABOR AND EQUIPMENT REQUIRED FOR THE PROPER COMPLETION OF ALL LANDSCAPE WORK AS SPECIFIED AND SHOWN ON THE DRAWINGS.
- ALL PLANT MATERIALS SHALL BE APPROVED PRIOR TO PLANTING. THE OWNER/LANDSCAPE ARCHITECT HAS THE RIGHT TO REJECT ANY AND ALL PLANT MATERIAL NOT CONFORMING TO THE SPECIFICATIONS. THE OWNER/LANDSCAPE ARCHITECT'S DECISION WILL BE FINAL.
- THE CONTRACTOR SHALL KEEP THE PREMISES, STORAGE AREAS AND PAVING AREAS NEAT AND ORDERLY AT ALL TIMES. REMOVE TRASH, SWEEP, CLEAN, HOSE, ETC. DAILY.
- THE CONTRACTOR SHALL PLANT ALL PLANTS PER THE PLANTING DETAILS, STAKE/GUY AS SHOWN. TOP OF ROOT BALLS SHALL BE PLANTED FLUSH WITH FINISH GRADE.
- THE CONTRACTOR SHALL NOT IMPEDE DRAINAGE IN ANY WAY. THE CONTRACTOR SHALL ALWAYS MAINTAIN POSITIVE DRAINAGE AWAY FROM THE BUILDING, WALLS, ETC.
- THE CONTRACTOR SHALL MAINTAIN ALL WORK UNTIL ALL WORK IS COMPLETE AND ACCEPTED BY THE OWNER. UPON COMPLETION OF LANDSCAPE WORK AN INSPECTION FOR ACCEPTANCE OF THE WORK SHALL BE HELD. THE CONTRACTOR SHALL NOTIFY THE OWNER/LANDSCAPE ARCHITECT FOR SCHEDULING OF INSPECTION AT LEAST SEVEN (7) DAYS IN ADVANCE.
- THE CONTRACTOR SHALL MAINTAIN AND GUARANTEE ALL WORK FOR A PERIOD OF ONE YEAR FROM THE DATE OF FINAL ACCEPTANCE BY THE OWNER. REPLACEMENT PLANTS SHALL BE GUARANTEED FOR AN ADDITIONAL 90 DAYS. MAINTENANCE SHALL INCLUDE MOWING, WEEDING, FERTILIZING, CLEANING, INSECTICIDES, HERBICIDES, ETC.
- NATIVE GRASS SEEDING AREAS TO BE A MIXTURE OF:  
40% BIG HORN BLUE HARD FESCUE  
40% DEFIANT HARD FESCUE  
20% JAMESTOWN 4 CHEWINGS FESCUE  
SEEDING RATE: 35 LBS PLS/ACRE
- ALL DISTURBED AREAS OUTSIDE MULCHED LANDSCAPE BEDS ARE TO BE SEEDING WITH NATIVE GRASS MIXTURE.
- ALL LANDSCAPE BEDS TO BE MULCHED WITH A MINIMUM 3" SHREDDED BARK.

#### IRRIGATION NOTE:

- ALL PLANT MATERIALS SHOWN ON THE DRAWING SHALL BE SERVICED BY AN AUTOMATIC UNDERGROUND IRRIGATION SYSTEM. ALL SHRUB BED AREAS, INCLUDING TREES SHALL BE IRRIGATED WITH A LOW PRESSURE DRIP IRRIGATION SYSTEM. ALL GRASS AREAS, EITHER NATIVE OR MANICURED SHALL BE IRRIGATED WITH A BROADCAST IRRIGATION SYSTEM.
- THE CONTRACTOR IS TO HAVE A QUALIFIED IRRIGATION SYSTEM SPECIALIST PREPARE A DESIGN FOR AN AUTOMATIC UNDERGROUND IRRIGATION SYSTEM AND SUBMIT DRAWINGS TO THE ENGINEER FOR APPROVAL AT LEAST 30 DAYS PRIOR TO THE SYSTEM INSTALLATION.
- UNDERGROUND IRRIGATION SYSTEM DRAWINGS SHALL BE PREPARED ON 24"X 36" SHEETS, NEATLY DRAWN AND VERY LEGIBLE. DRAWINGS ARE TO INCLUDE HEAD SPACING, TYPES OF HEADS, PIPING WITH SIZES, VALVES, FITTINGS AND ALL OTHER ITEMS REQUIRED FOR PROPER INSTALLATION OF THE SYSTEM.
- THE LANDSCAPE CONTRACTOR SHALL BE RESPONSIBLE FOR THE INSTALLATION OF ALL IRRIGATION SLEEVES PRIOR TO PLACEMENT OF HARD IMPROVEMENTS. COORDINATE WITH THE GENERAL CONTRACTOR.
- THE UTILITY CONTRACTOR IS TO PROVIDE AN IRRIGATION SYSTEM CONNECTION TO EITHER THE CULINARY OR SECONDARY WATER LINE WITH A BACK FLOW PREVENTION DEVICE, AS APPLICABLE, WITHIN STATE AND LOCAL JURISDICTIONAL CODES. THE IRRIGATION CONTRACTOR IS RESPONSIBLE TO COORDINATE THIS ITEM WITH THE UTILITY CONTRACTOR. IF SECONDARY WATER IS USED, THE SYSTEM SHALL BE FILTERED WITH A CLEANABLE FILTER SYSTEM.
- THE IRRIGATION CONTROL BOX SHALL BE LOCATED AT THE DIRECTION OF THE PROJECT MANAGER/OWNER.

#### Plant Schedule

Qty.	Symbol	Botanical Name Common Name	Size	Mature Size HxW
<b>TREES</b>				
15	AG	Acer ginnala Amur Maple	2" CAL.	20'x20'
6	OR	Quercus rubra Northern Red Oak	2" CAL.	50'x45'
<b>EVERGREEN TREES</b>				
3	MM	Juniperus scopulorum Rocky Mountain Juniper	6-8' Hgt	20'x10'
6	PP	Picea pungens Colorado Spruce	6-8' Hgt	50'x30'
19	HS	Picea pungens glauca 'Hoopsii' Hoopsii Blue Spruce	6-8' Hgt	30'x18'
3	PP	Pinus edulis Pinyon Pine	6-8' Hgt	30'x15'
<b>SHRUBS</b>				
6	GO	Quercus gambelii Scrub Oak	5 Gal.	15'x15'
131	SL	Rhus aromatica 'Grow Low' Grow Low Sumac	5 Gal.	30'x7'
43	YU	Yucca filamentosa Yucca	5 Gal.	3'x4'
<b>PERENNIALS</b>				
482	LD	Leucanthemum x compact 'Snow Lady' Shasta Dwarf Daisy	1 Gal.	12"x12"
76	PS	Perovskia atriplicifolia Common Russian Sage	1 Gal.	3.5'x3'
78	RS	Rudbeckia fulgida 'Goldstrum' Black Eyed Susan	1 Gal.	3'x2'
<b>GRASSES</b>				
250	BA	Bouteloua gracilis 'Blonde Ambition' Blonde Ambition Blue Gramma Grass	1 Gal.	3'x3'
<b>GROUNDCOVERS</b>				
151	MR	Mahonia repens Creeping Oregon Grape	1 Gal.	2'x3'
<b>MATERIALS</b>				
194 C.Y.	MB	Shredded Bark Mulch Match Existing on Site		3" Depth



SITE PLAN APPROVAL  
WEBER COUNTY, UT



DATE: JULY, 2013  
PROJECT: .024  
DRAWN BY: MP  
REVIEW BY: EL  
VERSION: SITE PLAN  
REVISIONS:

SHEET TITLE:  
PLANTING DETAILS AND SCHEDULE

SHEET NUMBER:  
**L1.3**