

### Legend

(Note: All items may not appear on drawing)

- Sanitary Sewer Manhole
- Water Manhole
- Storm Drain Manhole
- Electric Manhole
- Catch Basin
- Proposed Fire Hydrant
- Exist. Fire Hydrant
- Proposed Water Valve
- Exist. Water Valve
- Sanitary Sewer Line
- Culinary Water Line
- Gas Line
- Irrigation Line
- Storm Drain Line
- Telephone Line
- Secondary Water Line
- Underground Power Line
- Land Drain Line
- Flowline of Ditch
- PVC
- TA
- EA
- E
- FL
- TC
- RM
- G
- Top of Curb
- Rim
- Finish Grade
- Exist. Grade
- Direction of Flow
- Monument
- Section Corner
- Rebar & Cap
- Existing Asphalt
- Proposed Asphalt
- Heavy Duty Asphalt
- Concrete
- Building or Structure

Scale: 1" = 40'

Graphic Scale

REV	DATE	DESCRIPTION

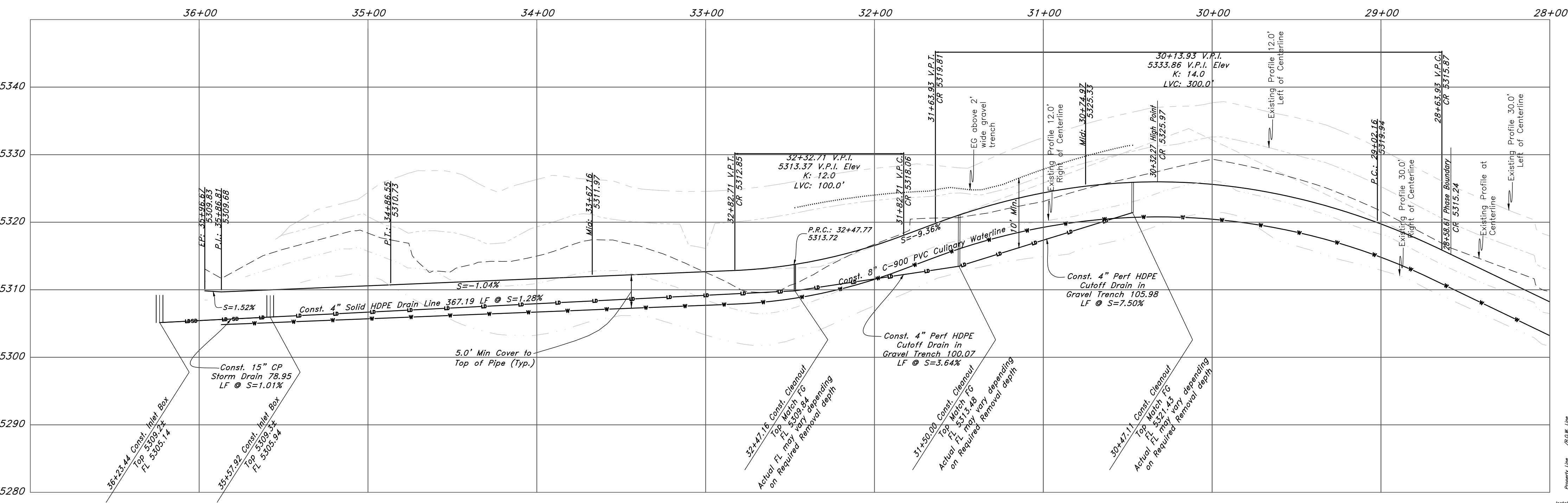
**GREAT BASIN ENGINEERING**

574 SOUTH 1475 EAST, SUITE 102, DENVER, CO 80202  
 303.733.4515 | FAX 303.733.4514  
 WWW.GREATBASINENGINEERING.COM

The Legends at Hawkins Creek

Via Cortina  
60' Wide Right of Way

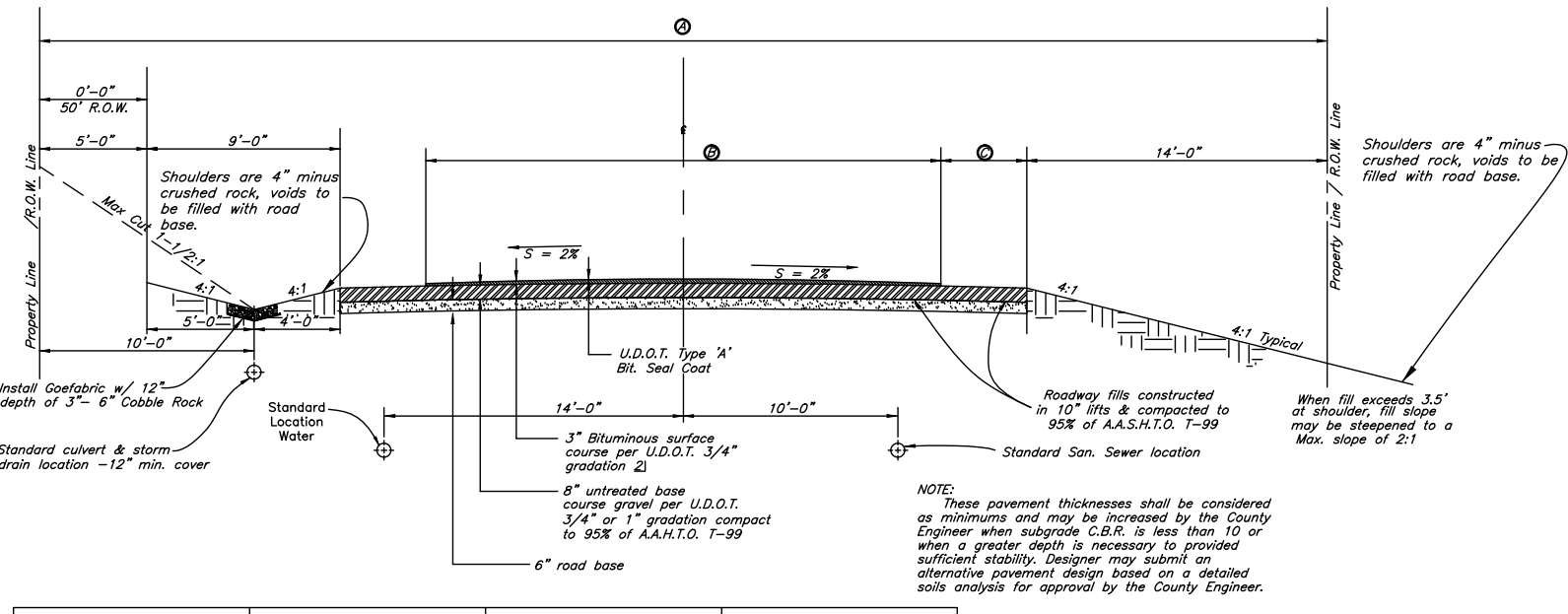
Snowbasin Resort Company



Note: Remove Landslide and Slump Deposits. Depth of removal 0 up to 15 feet. Exact depth of material to be determined onsite by Geotechnical Engineer. Replace with compacted structural fill meeting the requirements for composition and placement per geotech report (AGEC, 2013) recommendations.

- NOTES:**  
Each home will need:
1. Booster pump for culinary water.
  2. Fire Sprinkler system with booster pump.
  3. Recommend Generator to handle fire pump.
  4. Backflow preventor.

- Erosion Control Notes:**
1. Sandbags will be placed at discharge locations to contain and divert storm water through straw bales.
  2. An earthen berm 6" high will be constructed to contain the storm water and divert it to discharge areas.
  3. Storm water will be discharged into an existing drainage system. Existing Lines shall be inspected prior to Certificate of Occupancy and cleaned if necessary.
  4. The Storm Water Prevention Plan shall conform to all State Division of Environmental Protection Regulations.



STREET DESIGN	R.O.W. Width	Surface Course Width	Shoulder Width
1) Minor and/or Private	50'	24'	4'
Standard Residential	60'	24'	4'
Collector	66'	28'	5'
2) Minor Arterial	80'	44' (30')	4' 3)
3) Major Arterial	100' (Consult County Engineer for Specific Requirements)		

**Plan and Profile**

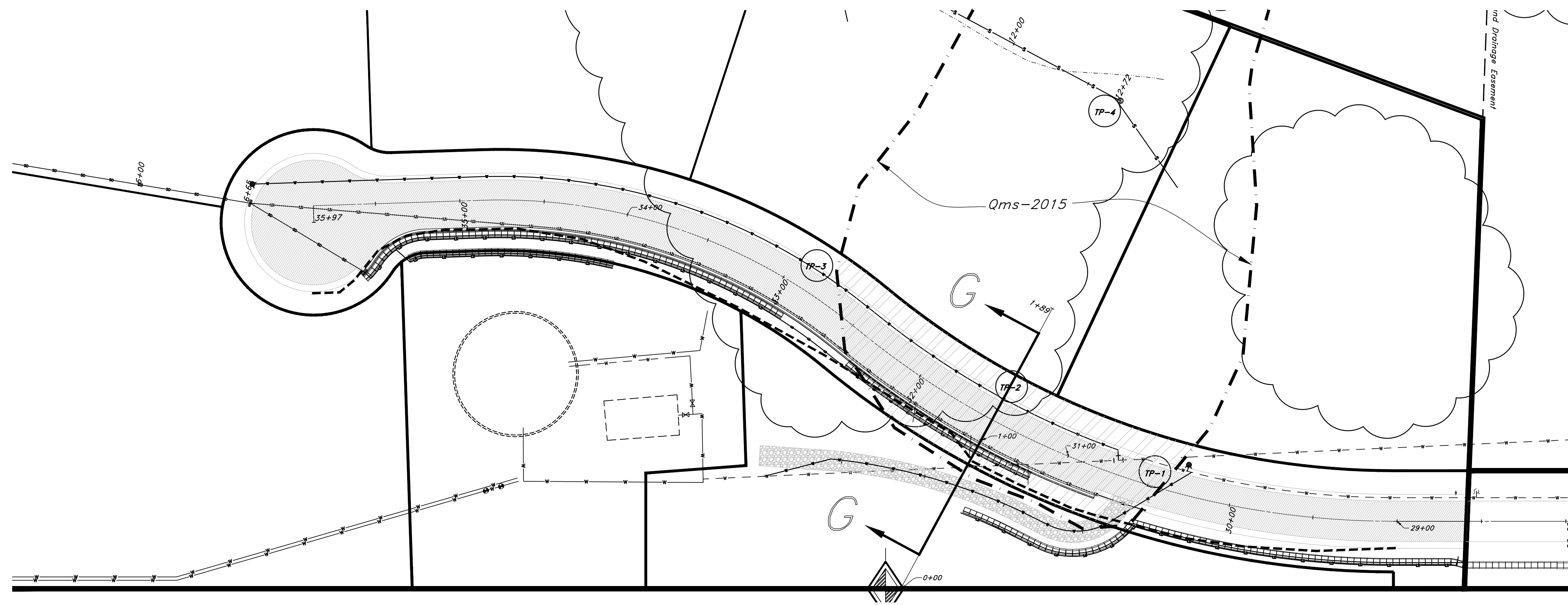
**The Summit at Ski Lake No. 13**

A part of the Southwest 1/4 of Section 13, a part of the Northeast 1/4 of Section 23, and a part of the Northwest 1/4 of Section 24, T6N, R1E, S188M, U.S. Survey



April 2015

SHEET NO. **1**

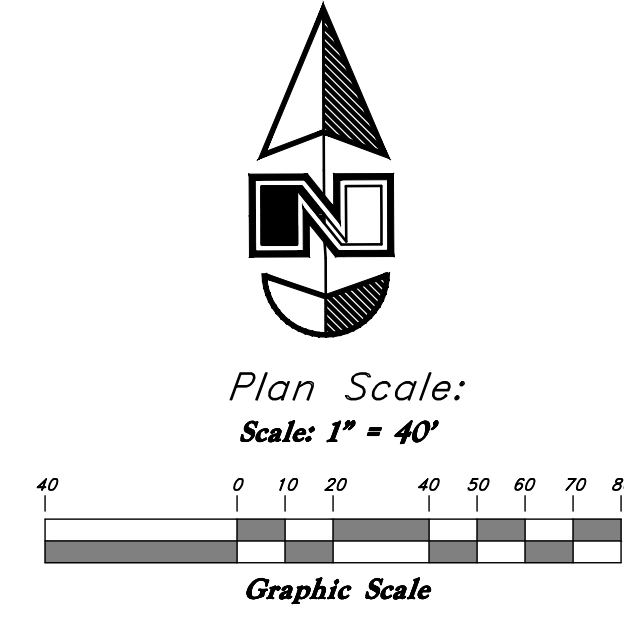


**Via Cortina**  
60' Wide Right of Way

**Legend**

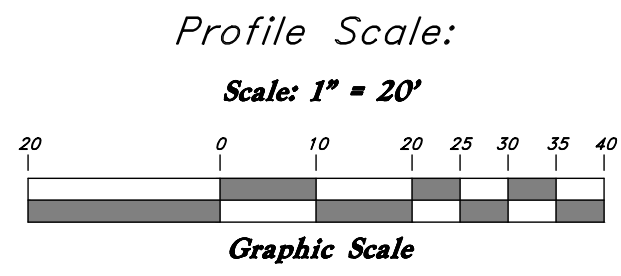
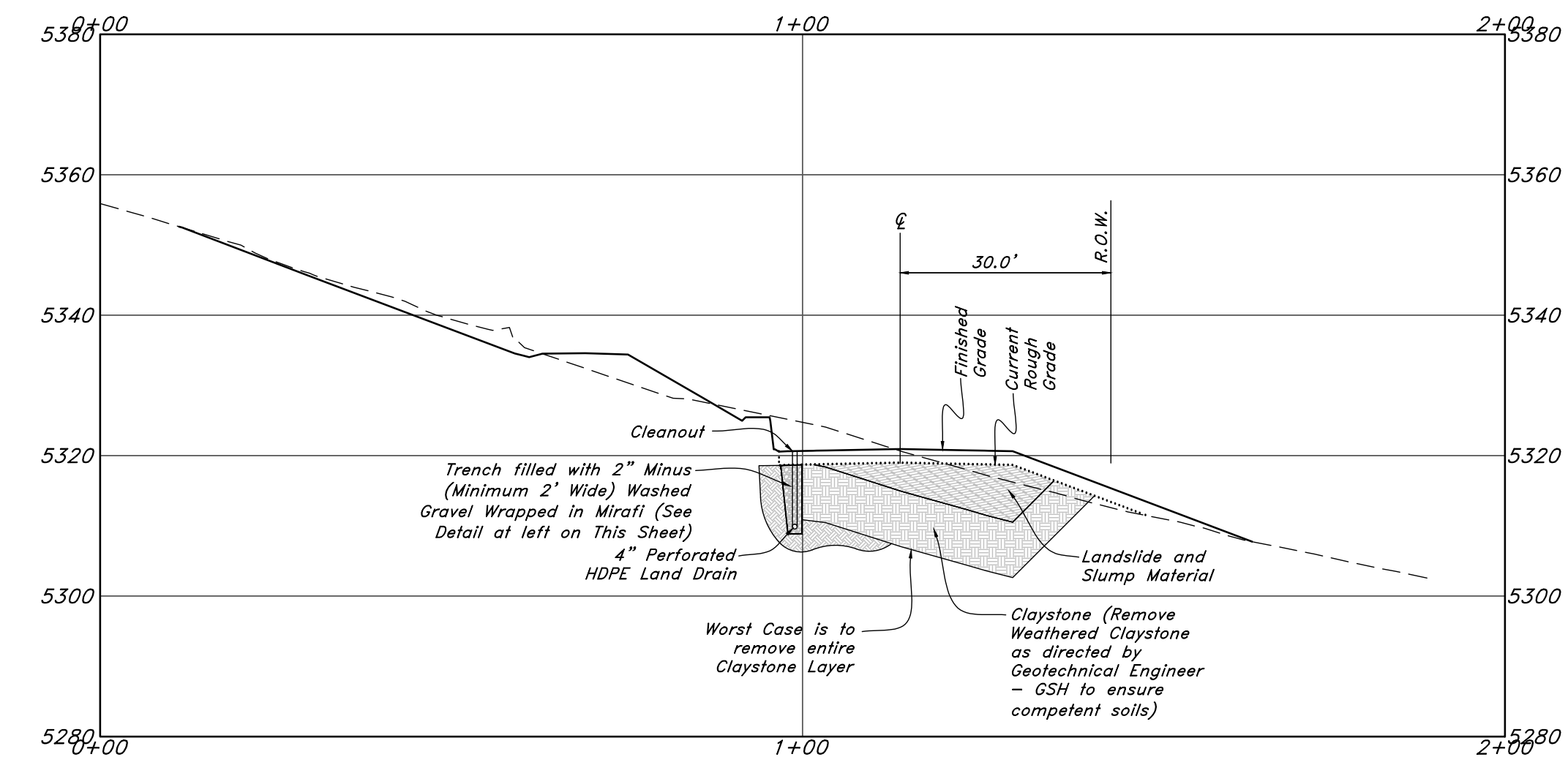
(Note: All items may not appear on drawing)

- Sanitary Sewer Manhole
- Water Manhole
- Storm Drain Manhole
- Electric Manhole
- Catch Basin
- Proposed Fire Hydrant
- Exist. Fire Hydrant
- Proposed Water Valve
- Sanitary Sewer Line
- Culinary Water Line
- Gas Line
- Irrigation Line
- Storm Drain Line
- Telephone Line
- Secondary Water Line
- Underground Power Line
- Land Drain Line
- Flowline of Ditch
- PVC
- TA
- EA
- Centerline
- FL
- TC
- RM
- Finish Grade
- Exist. Grade
- Direction of Flow
- Monument
- Section Corner
- Rebar & Cap
- Existing Asphalt
- Proposed Asphalt
- Heavy Duty Asphalt
- Concrete
- Building or Structure

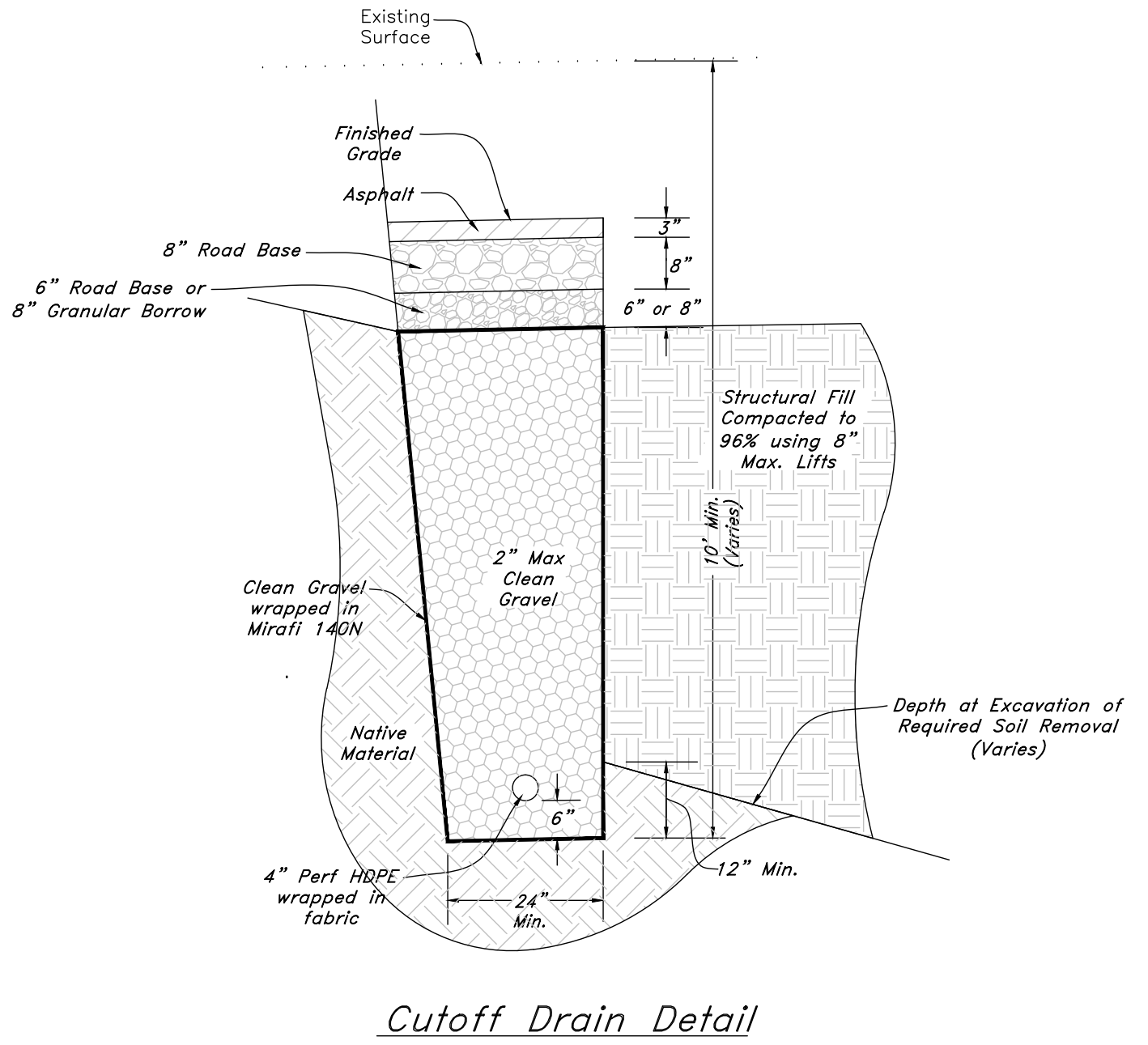


Note: Remove Landslide and Slump Deposits. Depth of removal 0 up to 15 feet. Exact depth of material to be determined onsite by Geotechnical Engineer. Replace with compacted structural fill meeting the requirements for composition and placement per geotech report (AGEC, 2013) recommendations.

**Section GG (Deepest Level of Landslide Material)**



Material Removal Estimates:  
1. Landslide and Slump Material = 366 cu yds.  
2. Claystone - up to 776 cu yds.



Cutoff Drain Detail

**GREAT BASIN ENGINEERING**  
 574 SOUTH 1475 EAST, OGDEN, UTAH 84403  
 MAIN: 801-391-4155, FAX: 801-392-7541  
 WWW.GREATBASINENGINEERING.COM

**Plan and Profile**  
**The Summit at Ski Lake No. 13**  
 A part of the Southwest 1/4 of Section 13, a part of the Northeast 1/4 of Section 23, and a part of the Northwest 1/4 of Section 24, T6N, R1E, S188M, U.S. Survey.



April 2015

SHEET NO. **1b**

11N224 #13 S6.dwg