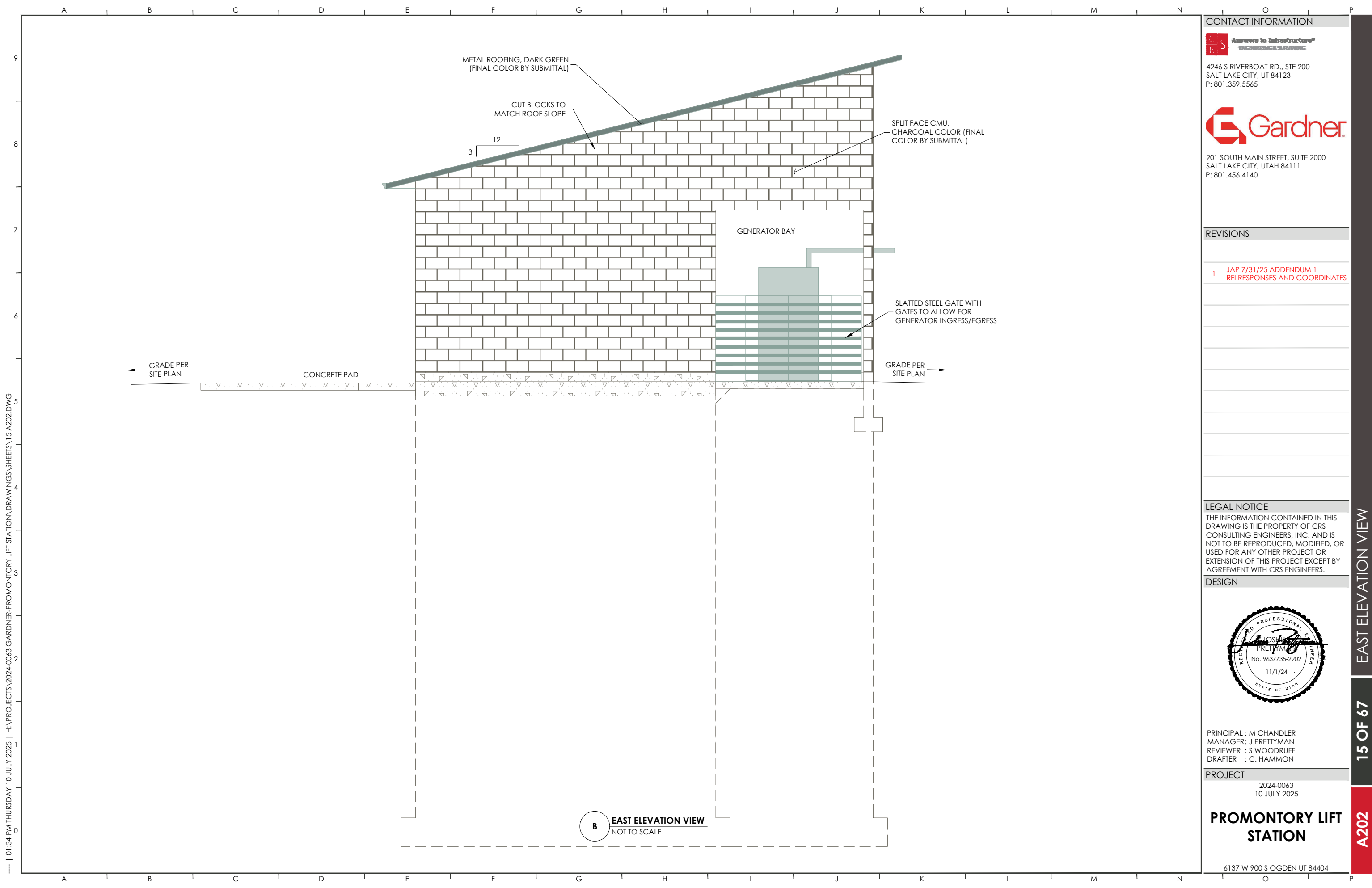


--- | 01:34 PM THURSDAY 10 JULY 2025 | H:\PROJECTS\2024-0063 GARDNER-PROMONTORY LIFT STATION\DRAWINGS\SHEETS\15 A202.DWG



B EAST ELEVATION VIEW
NOT TO SCALE

CONTACT INFORMATION



4246 S RIVERBOAT RD., STE 200
SALT LAKE CITY, UT 84123
P: 801.359.5565



201 SOUTH MAIN STREET, SUITE 2000
SALT LAKE CITY, UTAH 84111
P: 801.456.4140

REVISIONS

1 JAP 7/31/25 ADDENDUM 1
RFI RESPONSES AND COORDINATES

LEGAL NOTICE

THE INFORMATION CONTAINED IN THIS DRAWING IS THE PROPERTY OF CRS CONSULTING ENGINEERS, INC. AND IS NOT TO BE REPRODUCED, MODIFIED, OR USED FOR ANY OTHER PROJECT OR EXTENSION OF THIS PROJECT EXCEPT BY AGREEMENT WITH CRS ENGINEERS.

DESIGN



PRINCIPAL : M CHANDLER
MANAGER: J PRETTYMAN
REVIEWER : S WOODRUFF
DRAFTER : C. HAMMON

PROJECT

2024-0063
10 JULY 2025

PROMONTORY LIFT STATION

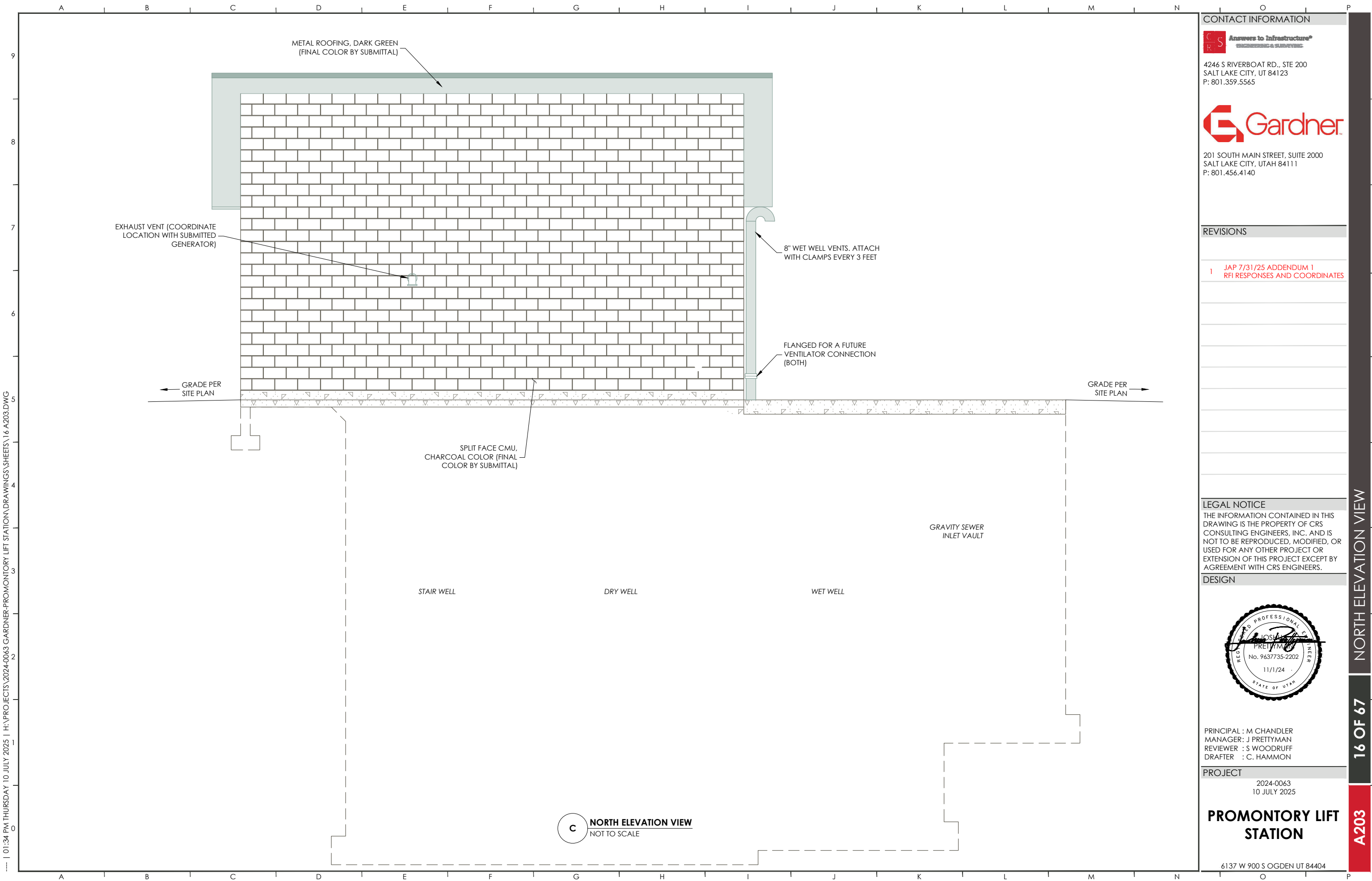
6137 W 900 S OGDEN UT 84404

EAST ELEVATION VIEW

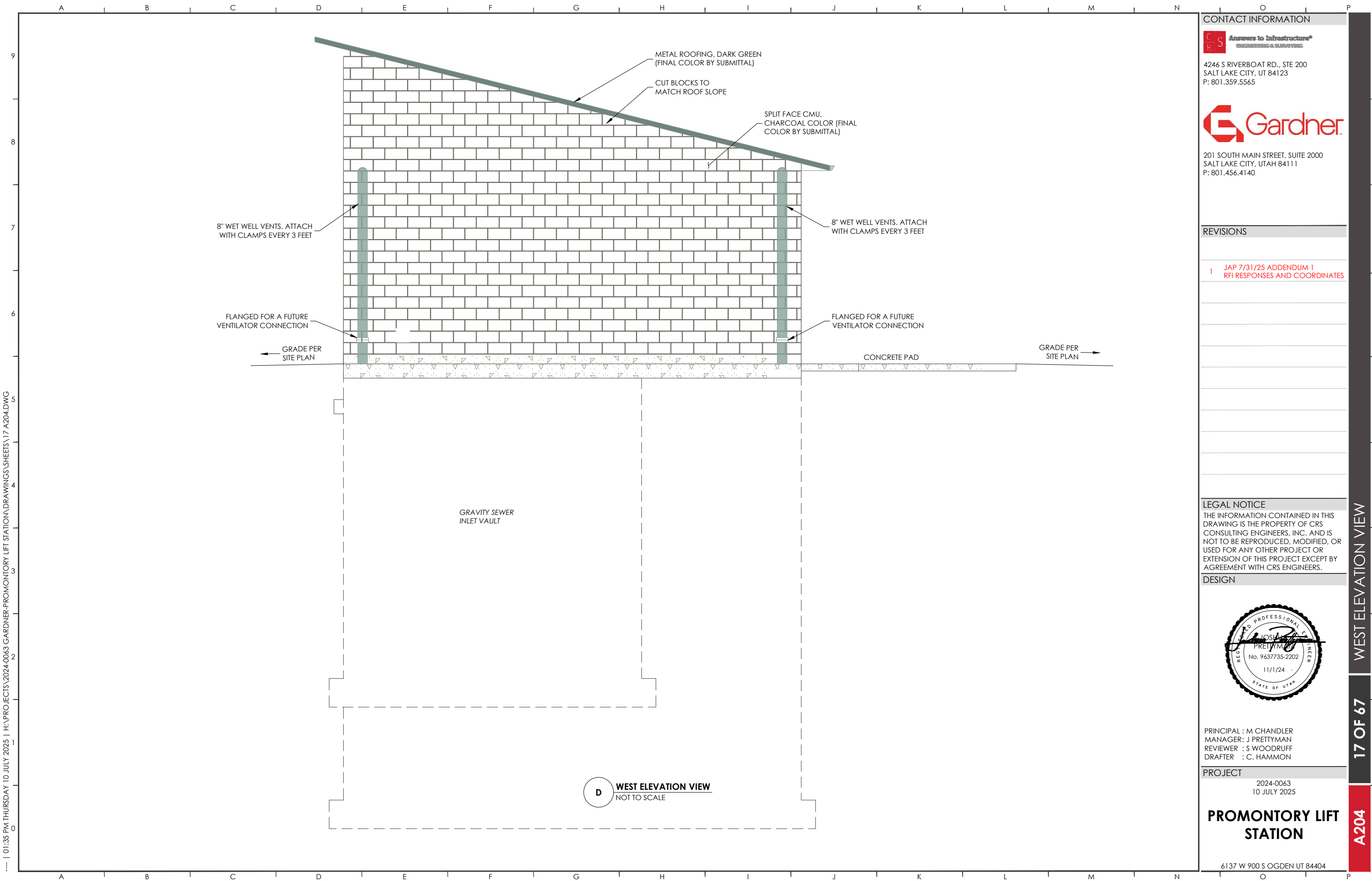
15 OF 67

A202

10 JULY 2025 10:34 PM THURSDAY | H:\PROJECTS\2024-0063 GARDNER-PROMONTORY LIFT STATION\DRAWINGS\SHEETS\16 A203.DWG



--- | 01:35 PM THURSDAY 10 JULY 2025 | H:\PROJECTS\2024-0063 GARDNER-PROMONTORY LIFT STATION\DRAWINGS\SHEETS\17 A204.DWG



CONTACT INFORMATION



4246 S RIVERBOAT RD., STE 200
SALT LAKE CITY, UT 84123
P: 801.359.5565



201 SOUTH MAIN STREET, SUITE 2000
SALT LAKE CITY, UTAH 84111
P: 801.456.4140

REVISIONS

1 JAP 7/31/25 ADDENDUM 1
RFI RESPONSES AND COORDINATES

LEGAL NOTICE

THE INFORMATION CONTAINED IN THIS DRAWING IS THE PROPERTY OF CRS CONSULTING ENGINEERS, INC. AND IS NOT TO BE REPRODUCED, MODIFIED, OR USED FOR ANY OTHER PROJECT OR EXTENSION OF THIS PROJECT EXCEPT BY AGREEMENT WITH CRS ENGINEERS.

DESIGN



PRINCIPAL : M CHANDLER
MANAGER: J PRETTYMAN
REVIEWER : S WOODRUFF
DRAFTER : C. HAMMON

PROJECT

2024-0063
10 JULY 2025

**PROMONTORY LIFT
STATION**

6137 W 900 S OGDEN UT 84404

WEST ELEVATION VIEW

17 OF 67

A204