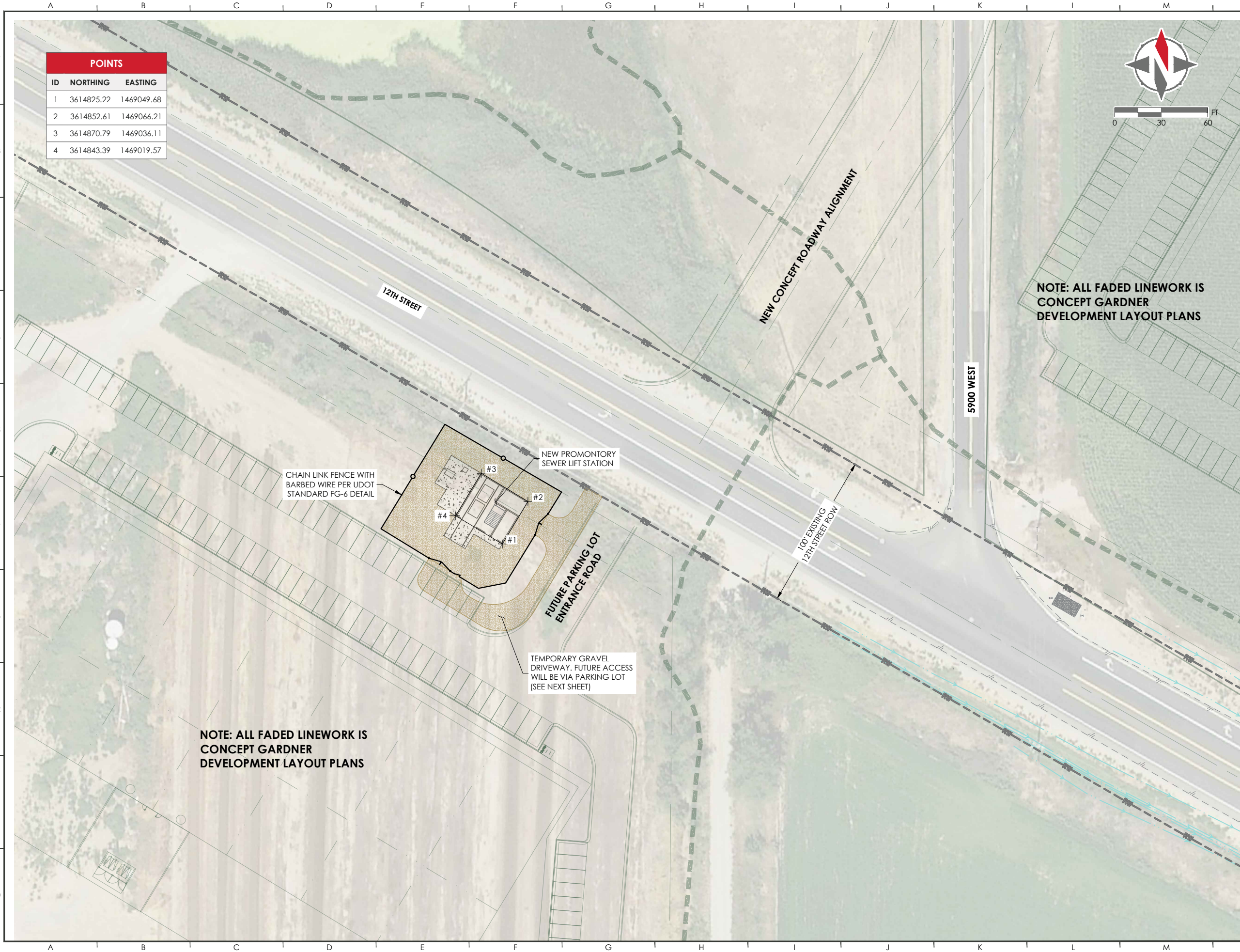


UTB3-NF | 08:22 AM THURSDAY 10 JULY 2025 | H:\PROJECTS\2024-0063 GARDNER-PROMONTORY LIFT STATION\DRAWINGS\SHEETS\5 CS101.DWG



POINTS		
ID	NORTHING	EASTING
1	3614825.22	1469049.68
2	3614852.61	1469066.21
3	3614870.79	1469036.11
4	3614843.39	1469019.57

CONTACT INFORMATION



4246 S RIVERBOAT RD., STE 200
SALT LAKE CITY, UT 84123
P: 801.359.5565



201 SOUTH MAIN STREET, SUITE 2000
SALT LAKE CITY, UTAH 84111
P: 801.456.4140

REVISIONS

LEGAL NOTICE

THE INFORMATION CONTAINED IN THIS DRAWING IS THE PROPERTY OF CRS CONSULTING ENGINEERS, INC. AND IS NOT TO BE REPRODUCED, MODIFIED, OR USED FOR ANY OTHER PROJECT OR EXTENSION OF THIS PROJECT EXCEPT BY AGREEMENT WITH CRS ENGINEERS.

DESIGN



PRINCIPAL : M CHANDLER
MANAGER: J PRETTYMAN
REVIEWER : S WOODRUFF
DRAFTER : C. HAMMON

PROJECT

2024-0063
10 JULY 2025

PROMONTORY LIFT
STATION

5900 W 1100 S OGDEN UT 84404