



# EDGEWATER BEACH RESORT PHASE 2 A PLANNED RESIDENTIAL UNIT DEVELOPMENT (P.R.U.D.)

PART OF THE SOUTHWEST QUARTER OF SECTION 13, TOWNSHIP 6 NORTH, RANGE 1 EAST, SALT LAKE BASE AND MERIDIAN, U.S. SURVEY  
WEBER COUNTY, UTAH  
APRIL, 2015

The words "Basis of Bearings" must be shown on the plat between two existing described government monuments.  
WCC 106-1-8(b)(1)d; USC 17-23-17(3)(d)

WITNESS CORNER FOUND BRASS CAP REFERENCE MONUMENT IN GOOD CONDITION  
S17°02'42"W 38.69'  
N11°42'02"W 37.44'

WITNESS CORNER FOUND BRASS CAP REFERENCE MONUMENT IN GOOD CONDITION  
S17°02'42"W 38.69'  
N11°42'02"W 37.44'

WITNESS CORNER FOUND BRASS CAP REFERENCE MONUMENT IN GOOD CONDITION  
S17°02'42"W 38.69'  
N11°42'02"W 37.44'

WITNESS CORNER FOUND BRASS CAP REFERENCE MONUMENT IN GOOD CONDITION  
S17°02'42"W 38.69'  
N11°42'02"W 37.44'

WITNESS CORNER FOUND BRASS CAP REFERENCE MONUMENT IN GOOD CONDITION  
S17°02'42"W 38.69'  
N11°42'02"W 37.44'

WITNESS CORNER FOUND BRASS CAP REFERENCE MONUMENT IN GOOD CONDITION  
S17°02'42"W 38.69'  
N11°42'02"W 37.44'

WITNESS CORNER FOUND BRASS CAP REFERENCE MONUMENT IN GOOD CONDITION  
S17°02'42"W 38.69'  
N11°42'02"W 37.44'

WITNESS CORNER FOUND BRASS CAP REFERENCE MONUMENT IN GOOD CONDITION  
S17°02'42"W 38.69'  
N11°42'02"W 37.44'

WITNESS CORNER FOUND BRASS CAP REFERENCE MONUMENT IN GOOD CONDITION  
S17°02'42"W 38.69'  
N11°42'02"W 37.44'

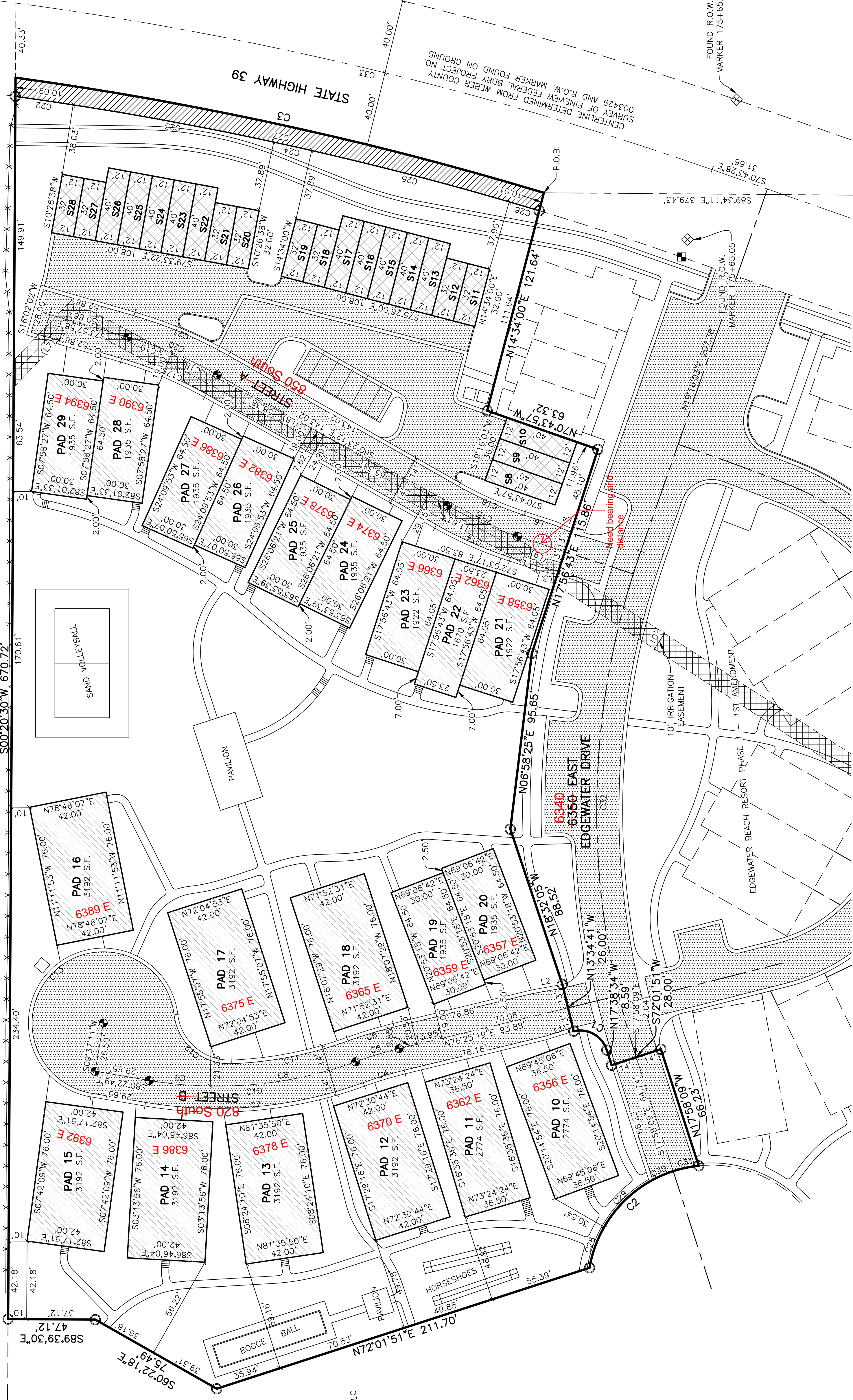
WITNESS CORNER FOUND BRASS CAP REFERENCE MONUMENT IN GOOD CONDITION  
S17°02'42"W 38.69'  
N11°42'02"W 37.44'

WITNESS CORNER FOUND BRASS CAP REFERENCE MONUMENT IN GOOD CONDITION  
S17°02'42"W 38.69'  
N11°42'02"W 37.44'

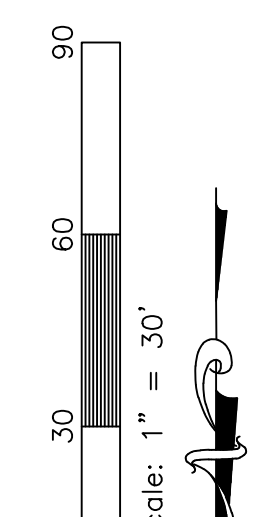
WITNESS CORNER FOUND BRASS CAP REFERENCE MONUMENT IN GOOD CONDITION  
S17°02'42"W 38.69'  
N11°42'02"W 37.44'

WITNESS CORNER FOUND BRASS CAP REFERENCE MONUMENT IN GOOD CONDITION  
S17°02'42"W 38.69'  
N11°42'02"W 37.44'

WITNESS CORNER FOUND BRASS CAP REFERENCE MONUMENT IN GOOD CONDITION  
S17°02'42"W 38.69'  
N11°42'02"W 37.44'



- LEGEND**
- = SECTION CORNER
  - ⊠ = SET 5/8" X 24" REBAR AND CAP STAMPED "REEVE & ASSOCIATES"
  - ⊞ = FOUND R.O.W. MONUMENT
  - ⊞ = SET R.O.W. MONUMENT
  - ⊞ = SET CL MONUMENT
  - ▨ = LIMITED COMMON AREA
  - ▨ = PUBLIC STREET DEDICATION
  - ▨ = PRIVATE OWNERSHIP
  - ▨ = PAVED AREA (COMMON AREA)
  - ▨ = COMMON AREA
  - ▨ = 10' IRRIGATION EASEMENT



ALL BUILDING TIE DIMENSIONS ARE PERPENDICULAR TO BOUNDARY LINE OR ROAD CENTERLINE.

Lines cannot be perpendicular to curves. Are lines that tie to curves radial? If so, please indicate in note. If not, bearings and distances need to be added to those lines.

**Reeve & Associates, Inc.**  
300 CHAMBERS STREET, SUITE 200, SALT LAKE CITY, UTAH 84103  
TEL: (801) 467-9100 FAX: (801) 467-2666 www.reeve-assocs.com

**Project Info.**

Surveyor: R. KUNZ  
Designer: N. ANDERSON  
Begin Date: 03-02-15  
Name: EDGEWATER BEACH RESORT PHASE 2  
Number: 6240-03  
Revision: 1"  
Scale: 1"=30'  
Checked:

**Weber County Recorder**  
Entry No. \_\_\_\_\_ Fee Paid \_\_\_\_\_  
And Recorded, Book \_\_\_\_\_  
Of The Official Records, Page \_\_\_\_\_  
Recorded For: \_\_\_\_\_

\_\_\_\_\_  
Weber County Recorder  
\_\_\_\_\_  
Deputy

SOUTHWEST CORNER OF SECTION 13, TOWNSHIP 6 NORTH, RANGE 1 EAST, SALT LAKE BASE AND MERIDIAN, U.S. SURVEY. (FOUND WEBER COUNTY BRASS CAP MARKED 2006 IN GOOD CONDITION)

NORTHWEST CORNER OF SECTION 13, TOWNSHIP 6 NORTH, RANGE 1 EAST, SALT LAKE BASE AND MERIDIAN, U.S. SURVEY. (CALCULATED)