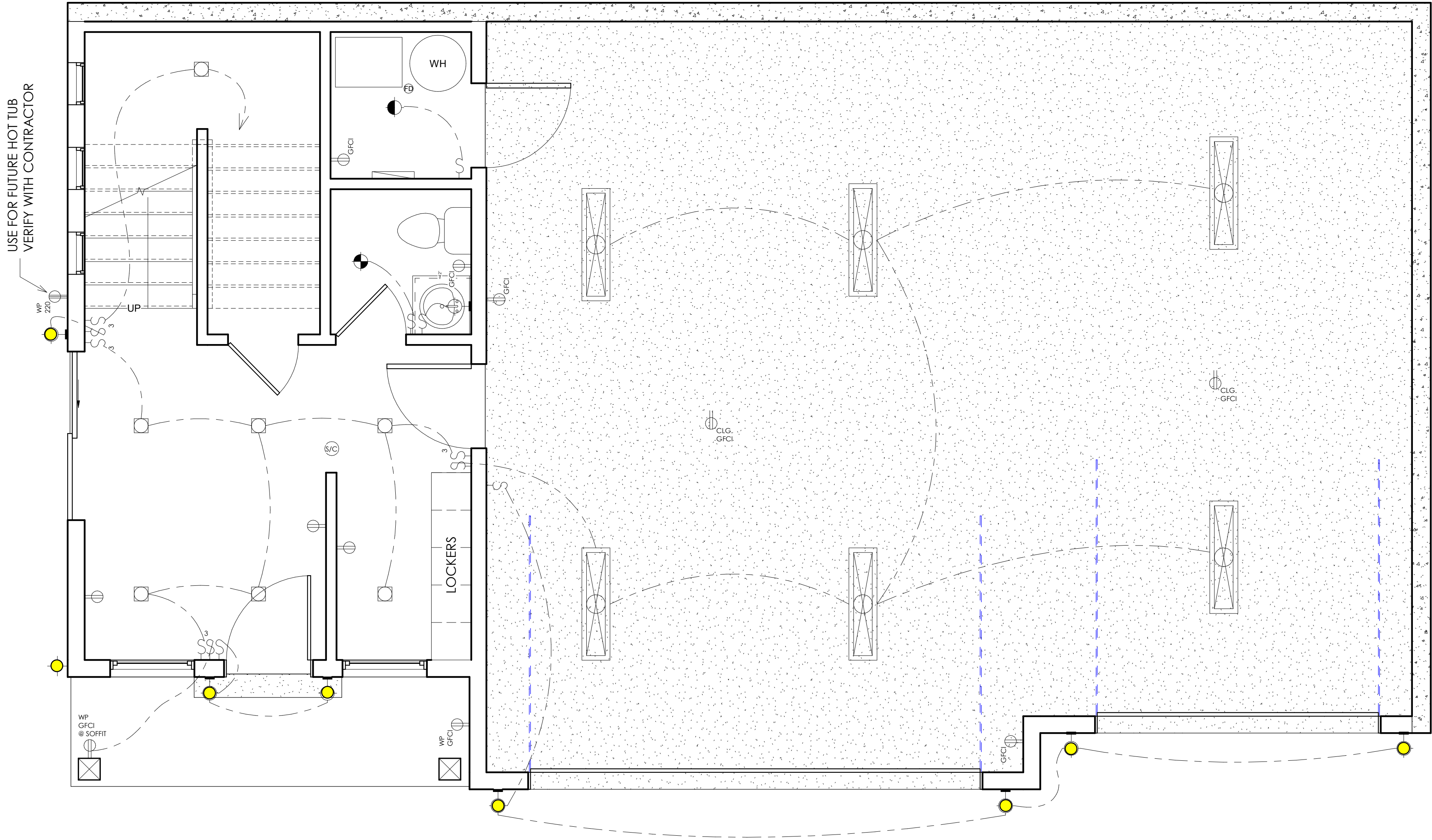


Outdoor Lighting Plan Legend:

Fully Shielded Downward Facing Light.
Bulb Color Temperature 3000 Kelvin or Less



GENERAL NOTES

- ALL RECEPTACLES AT KITCHEN, GARAGE, AND BATHROOM COUNTERTOPS, AT EXTERIOR GRADE LEVEL, AND AT UNFINISHED BASEMENTS ARE TO BE GFCI.
- WIRING WITHIN 6' - 0" OF ATTIC ACCESS MUST HAVE LUMBER-GUARD STRIP.
- ELECTRICAL IS SCHEMATIC ONLY. VERIFY WITH CONTRACTOR AND OWNER.
- THE OUTLET UNDER THE COUNTER FOR THE DISHWASHER MUST BE GFCI PROTECTED.
- ALL OUTLETS IN THE LAUNDRY AREA MUST BE GFCI PROTECTED.
- RECESSED CAN LIGHTS ABOVE TUBS OR SHOWERS SHALL HAVE LENS GASKET.
- ALL EXTERIOR OUTLETS TO HAVE UL APPROVED IN-USE COVERS.
- ALL ELECTRICAL RECEPTACLES TO BE TAMPER-PROOF.
- A SERVICE OUTLET MUST BE INSTALLED BY THE FURNACE.
- ALL CLOSET LIGHTING MUST BE INSTALLED ON THE CEILING 12" FROM THE NOSING OF THE SHELF AND 12" FROM ANY OPENING EDGE OF THE ATTIC ACCESS.
- INSTALL 120 V OUTLET ONLY WHEN GAS STOVE OPTION IS CHOSEN.

ELECTRICAL LEGEND

- SINGLE POLE SWITCH
- THREE WAY SWITCH
- PUSH BUTTON SWITCH
- KEYLESS FIXTURE
- HANGING LIGHT FIXTURE
- CEILING FIXTURE - FLUSH MOUNT
- WALL MOUNTED FIXTURE
- WATERPROOF RECESSED CAN
- PENDANT LIGHT FIXTURE
- RECESSED CAN LIGHT FIXTURE
- WALL SCONCE
- SMOKE DETECTOR - WIRED IN SERIES
- CARBON MONOXIDE AND SMOKE DETECTOR COMBINATION (1) AT EACH FLOOR LEVEL CENTRALLY LOCATED PER CODE
- EXHAUST FAN
- CEILING FAN ROUGH-IN
- CEILING FAN
- WIRING (SCHEMATIC ONLY)
- DUPLEX OUTLET
- GROUND FAULT CIRCUIT INTERRUPTER
- CEILING OUTLET
- WATERPROOF OUTLET
- HIGH VOLTAGE OUTLET (240)
- RANGE OUTLET
- ELECTRICAL PANEL

ELECTRICAL PLAN IS SCHEMATIC ONLY
VERIFY WITH CONTRACTOR