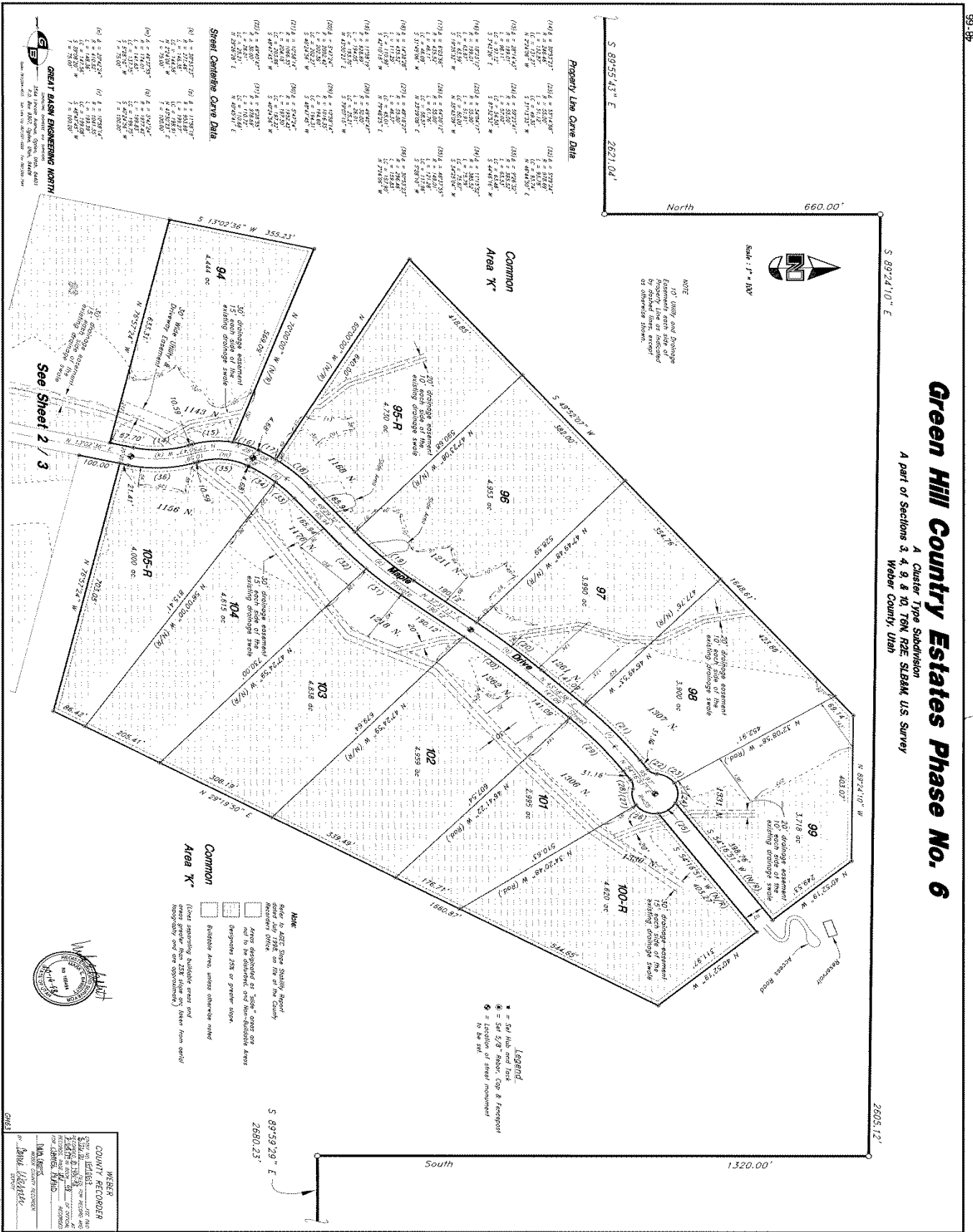




Exhibit A-Original Subdivision



**Green Hill Country Estates Phase No. 6**

A Cluster Type Subdivision  
 A part of Sections 3, 4, 9 & 10, T6N, R2E, S18&M, U3S Survey  
 Weber County, Utah

**GREY BARS ENGINEERING NORTH**  
 1000 North Main Street, Suite 100, Ogden, Utah 84401  
 Phone: 435-799-1111 Fax: 435-799-1112  
 www.greybars.com



WESBER  
 COUNTY RECORDER  
 OFFICE OF THE COUNTY RECORDER  
 100 WEST CENTER STREET, SUITE 200  
 OGDEN, UTAH 84401  
 DATE RECORDED: 12/15/2011  
 TIME: 10:00 AM  
 BY: [Signature]  
 48-66

