

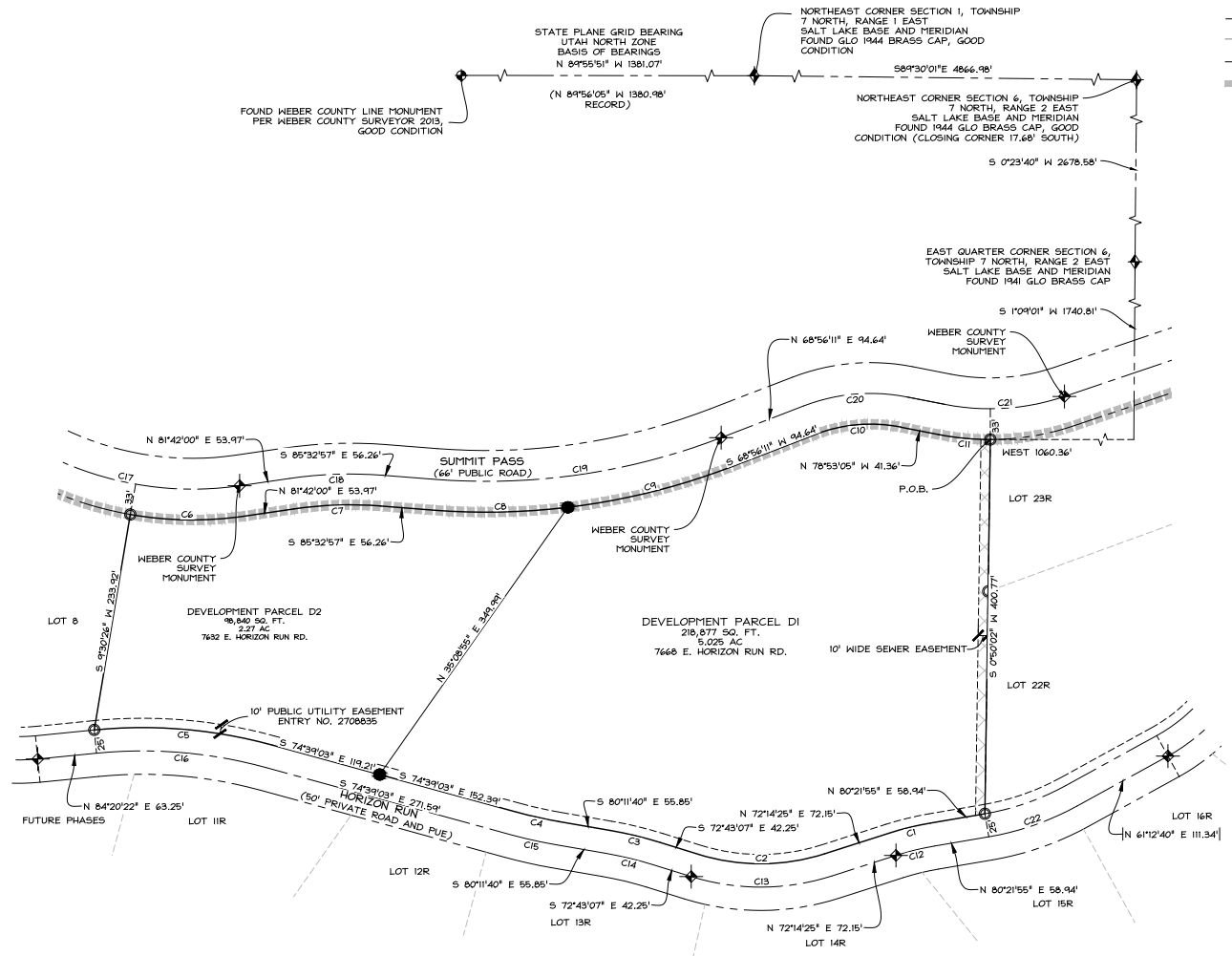
PHASE 1A AMENDMENT 1, 2015-01-27.DWG
 DATE: 1-14-15
 NAME: NIV5
 N:\SUBDIVISIONS\PHASE 1A AMENDMENT 1\AMENDMENT 1\SUBDIVISION.DWG

SUMMIT EDEN PHASE 1A AMENDMENT 1 AMENDING PARCELS C1, C2 AND C3

THE SOUTHEAST QUARTER OF SECTION 6, TOWNSHIP 7 NORTH, RANGE 2 EAST, SALT LAKE BASE AND MERIDIAN
WEBER COUNTY, UTAH
JULY 2015

LEGEND	
	BOUNDARY LINE
	LOT LINE
	SECTION LINE
	QUARTER SECTION LINE
	ADJOINER DEED LINES
	AREA TIE LINES
	NO ACCESS LINE
	STREET MONUMENTS TO BE CONSTRUCTED
	FOUND REBAR WITH PLASTIC CAP STAMPED "NOLTE ASSOC."
	SET REBAR WITH PLASTIC CAP STAMPED "NOLTE ASSOC."
	BUILDING ENVELOPE
	EASEMENT

CURVE TABLE					
CURVE	LENGTH	RADIUS	DELTA	LONG CHORD	LENGTH
C1	46.09'	326.00'	8°07'31"	S 76°18'10" W	46.05'
C2	137.61'	225.00'	35°02'29"	N 84°46'39" E	136.47'
C3	55.46'	425.00'	7°28'33"	N 76°27'23" H	55.41'
C4	45.94'	475.00'	5°32'37"	S 77°25'21" E	45.94'
C5	192.51'	525.00'	27°00'36"	N 80°09'21" H	191.44'
C6	122.41'	385.00'	18°18'42"	S 84°08'39" E	121.89'
C7	93.18'	416.71'	12°45'03"	S 88°04'31" H	92.99'
C8	144.52'	733.00'	11°17'47"	N 88°48'09" E	144.29'
C9	181.89'	733.00'	14°19'04"	N 70°02'43" E	181.43'
C10	93.79'	167.00'	32°10'44"	S 85°01'33" H	92.56'
C11	55.57'	283.00'	11°18'02"	S 84°30'36" E	55.48'
C12	42.54'	300.00'	8°07'31"	S 76°18'10" W	42.51'
C13	152.97'	250.00'	35°02'29"	N 84°46'39" E	150.52'
C14	52.19'	400.00'	7°28'33"	N 76°27'23" H	52.15'
C15	48.39'	500.00'	5°32'37"	S 77°25'21" E	48.36'
C16	183.30'	500.00'	27°00'36"	N 80°09'21" H	182.32'
C17	247.74'	350.00'	40°33'19"	S 78°01'21" E	242.60'
C18	100.53'	451.71'	12°45'03"	S 88°04'31" H	100.32'
C19	311.72'	700.00'	25°30'52"	N 81°41'37" E	309.15'
C20	121.33'	200.00'	32°10'44"	S 85°01'33" H	119.56'
C21	130.00'	250.00'	29°47'36"	N 86°13'07" E	128.54'
C22	100.29'	300.00'	19°09'16"	N 70°47'17" E	99.83'



Sheet 2 of 2

533 SOUTH OAK STREET, SUITE 200
 861,261,200 TEL. 861,261,200 FAX
 www.niv5.com

<p>OWNER</p> <p>SMHG Phase 1, LLC 3632 N. WOLFE CREEK DR. EDEN, UT 84310</p>	<p>WEBER COUNTY ATTORNEY</p> <p>I HAVE EXAMINED THE FINANCIAL GUARANTEE AND OTHER DOCUMENTS ASSOCIATED WITH THIS SUBDIVISION PLAT AND IN MY OPINION THEY CONFORM WITH THE COUNTY ORDINANCE APPLICABLE THERETO AND NON IN FORCE AND AFFECT. SIGNED THIS _____ DAY OF _____, 20____.</p> <p>_____ SIGNATURE</p>	<p>WEBER COUNTY SURVEYOR</p> <p>I HEREBY CERTIFY THAT THE WEBER COUNTY SURVEYOR'S OFFICE HAS REVIEWED THIS PLAT FOR MATHEMATICAL CORRECTNESS, SECTION CORNER DATA AND FOR HARMONY WITH LINES AND MONUMENTS ON RECORD IN THE COUNTY OFFICES. THE APPROVAL OF THIS PLAT BY THE WEBER COUNTY SURVEYORS DOES NOT RELIEVE THE LICENSED LAND SURVEYOR WHO ENGAGED THIS PLAT FROM RESPONSIBILITIES AND/OR LIABILITIES ASSOCIATED THEREWITH. SIGNED THIS _____ DAY OF _____, 20____.</p> <p>_____ COUNTY SURVEYOR</p>	<p>WEBER COUNTY ENGINEER</p> <p>I HEREBY CERTIFY THAT THE REQUIRED PUBLIC IMPROVEMENT STANDARDS AND DRAWINGS FOR THIS SUBDIVISION CONFORM WITH COUNTY STANDARDS AND THE AMOUNT OF THE FINANCIAL GUARANTEE IS SUFFICIENT FOR THE INSTALLATION OF THESE IMPROVEMENTS. SIGNED THIS _____ DAY OF _____, 20____.</p> <p>_____ SIGNATURE</p>	<p>WEBER COUNTY PLANNING COMMISSION APPROVAL</p> <p>THIS IS TO CERTIFY THAT THIS SUBDIVISION PLAT WAS DULY APPROVED BY THE WEBER COUNTY PLANNING COMMISSION ON THE DAY OF _____ 20____.</p> <p>_____ CHAIRMAN-WEBER COUNTY PLANNING COMMISSION</p>	<p>WEBER COUNTY COMMISSION ACCEPTANCE</p> <p>THIS IS TO CERTIFY THAT THIS SUBDIVISION PLAT, THE DEDICATION OF STREETS AND OTHER PUBLIC RIGHTS AND FINANCIAL GUARANTEE OF PUBLIC IMPROVEMENTS ASSOCIATED WITH THIS SUBDIVISION THERON ARE HEREBY APPROVED AND ACCEPTED BY THE COMMISSIONERS OF WEBER COUNTY, UTAH THIS _____ DAY OF _____, 20____.</p> <p>_____ CHAIRMAN, WEBER COUNTY COMMISSION</p>	<p>REQUEST OF:</p> <p>ENTRY NO. _____</p> <p>DATE: _____ TIME: _____</p> <p>BOOK: _____ PAGE: _____</p> <p>FEES: _____</p> <p>WEBER COUNTY RECORDER</p>
---	--	--	---	---	---	--