

Project Narrative/Notes/Revisions

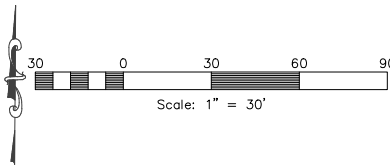
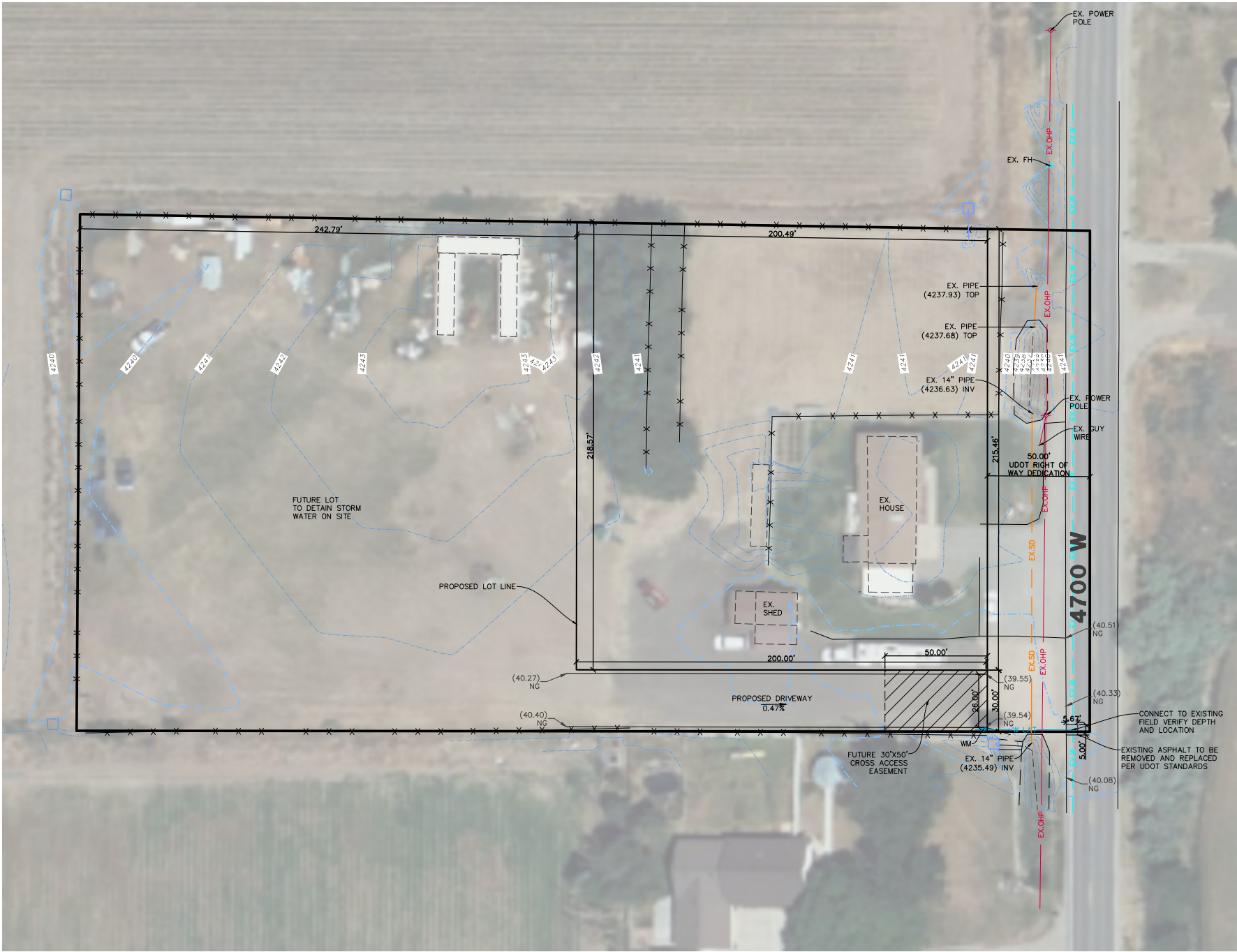
- 02/21/2025 ZD - COMPLETED DESIGN FOR CLIENT & CITY REVIEW.
- 03/10/2025 ZD - ADDED CROSS ACCESS EASEMENT AREA

DAVIS PROPERTY
301 S 4700 W
Improvement Plans

WEBER COUNTY, UTAH
FEBRUARY, 2025



Vicinity Map
NOT TO SCALE



Sheet Index
Sheet 1 - Site/Utility Plan
Sheet 2 - Notes/Legend
Sheet 3 - Details

Engineer's Notice To Contractors:
THE EXISTENCE AND LOCATION OF ANY UNDERGROUND UTILITY PIPES OR STRUCTURES SHOWN ON THESE PLANS WERE OBTAINED FROM AVAILABLE INFORMATION PROVIDED BY OTHERS. THE LOCATIONS SHOWN ARE APPROXIMATE AND SHALL BE CONFIRMED IN THE FIELD BY THE CONTRACTOR, SO THAT ANY NECESSARY ADJUSTMENT CAN BE MADE IN ALIGNMENT AND/OR GRADE OF THE PROPOSED IMPROVEMENT. THE CONTRACTOR IS REQUIRED TO CONTACT THE UTILITY COMPANIES AND TAKE DUE PRECAUTIONARY MEASURE TO PROTECT ANY UTILITY LINES SHOWN, AND ANY OTHER LINES OBTAINED BY THE CONTRACTOR'S RESEARCH, AND OTHERS NOT OF RECORD OR NOT SHOWN ON THESE PLANS.

Surveyor:
Jason Felt
Reeve & Associates, Inc.
5160 South 1500 West
Riverdale, Utah, 84405
PH: (801) 621-3100

Project Contact:
Jeremy Draper
Reeve & Associates, Inc.
5160 South 1500 West
Riverdale, Utah, 84405
PH: (801) 621-3100

Reeve & Associates, Inc.
5160 SOUTH 1500 WEST, RIVERDALE, UTAH 84405
TEL: (801) 621-3100 www.reeve.co

PA

LAND PLANNERS • CIVIL ENGINEERS • LAND SURVEYORS
TRAFFIC ENGINEERS • ENVIRONMENTAL ENGINEERS

REVISIONS	DESCRIPTION
DATE	03/10/25 ZD Access Easement

Davis Property
301 S 4700 W
WEBER COUNTY, UTAH

Site/Utility Plan



Project Info.
Engineer:
JEREMY A. DRAPER, P.E.
Drafter:
Z. DECARIA
Begin Date:
FEBRUARY 2025
Name:
DAVIS PROPERTY
Number: 8476-01