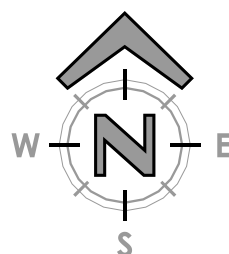
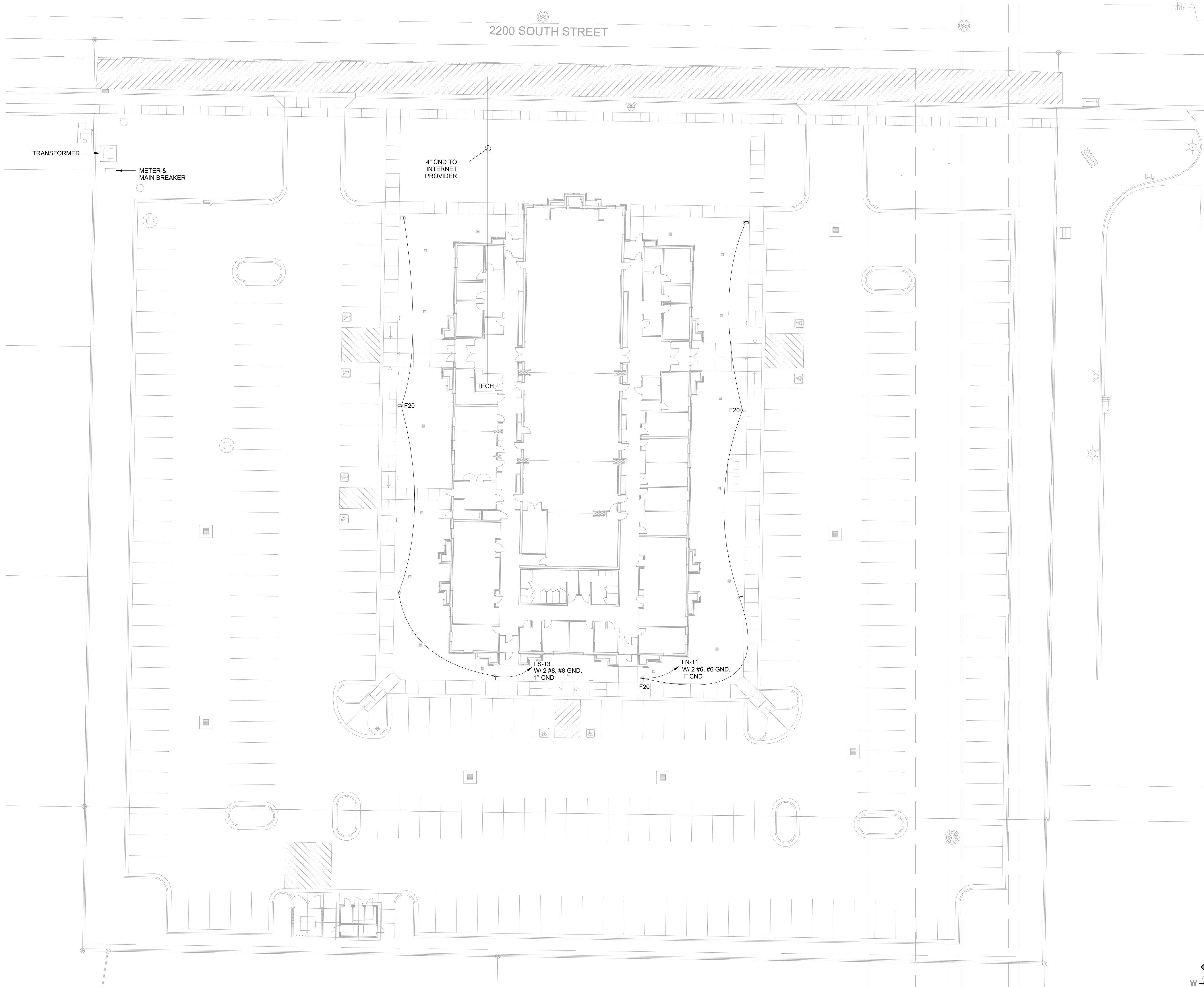


Autodesk Docs://250031 - Ogden West (AKA Taylor Landing) ICF 300 Granger MH/250031-Elec Central.rvt  
3/28/2025 12:14:27 PM



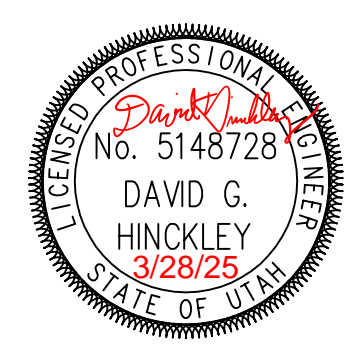
**1 ELECTRICAL SITE PLAN**  
1" = 20'-0"

**GENERAL NOTES**

- 1 THE ELECTRICAL CONTRACTOR SHALL MEET WITH AND COORDINATE WITH ALL SERVICE PROVIDERS (POWER, COMMUNICATION, CABLE/SATELLITE, ETC.) TO THE FACILITY ON SITE PRIOR TO ANY WORK BEING PERFORMED. CONFIRM WITH EACH SERVICE PROVIDER EXACT LOCATIONS OF EQUIPMENT AND ROUTING. COMPLY WITH ALL SERVICE PROVIDER'S CURRENT STANDARDS AND REQUIREMENTS. PROVIDE THE REQUIRED EQUIPMENT, RACEWAYS, BOXES, CABLE, ETC. AS REQUIRED BY THE SERVICE PROVIDER WHETHER SHOWN ON THE DRAWINGS OR NOT.
- 2 FOR ALL LIGHT FIXTURES, POLE LIGHTS, AND ALL OTHER ELECTRICAL DEVICES THE CONTRACTOR SHALL COORDINATE EXACT LOCATION AND MOUNTING HEIGHTS WITH ARCHITECT, OWNER, ENGINEER, AND ALL OF THE CONTRACT DOCUMENTS PRIOR TO ROUGH IN AND TRENCHING.
- 3 CONTRACTOR IS RESPONSIBLE FOR ALL TRENCHING, BACKFILL, AND COMPACTION ASSOCIATED TO ALL ELECTRICAL UNDERGROUND RACEWAYS AND CABLES. COORDINATE WITH ARCHITECTURAL AND CIVIL DRAWINGS. SEE UNDERGROUND RACEWAY DETAILS FOR REQUIREMENTS FOR EACH TRENCH.
- 4 CONTRACTOR SHALL INSTALL POLE MOUNTED LIGHTS IN STRAIGHT LINES, SQUARE, AND PLUMB. COORDINATE WITH ARCHITECT AND CIVIL DRAWINGS.
- 5 THE ELECTRICAL CONTRACTOR SHALL HAVE ANY AND ALL CONCRETE POLE BASES AND SLABS REVIEWED BY A STRUCTURAL ENGINEER AND SHALL MODIFY DESIGN PER STRUCTURAL ENGINEER'S AND OR AHJ'S RECOMMENDATIONS.
- 6 PROVIDE PHOTOCELL ON NORTH SIDE OF FACILITY TO CONTROL EXTERIOR LIGHTS.
- 7 THE ELECTRICAL CONTRACTOR IS RESPONSIBLE FOR ALL CONCRETE/ASPHALT CUTTING AND REPLACEMENT OF CONCRETE/ASPHALT TO MATCH EXISTING ASSOCIATED WITH UNDERGROUND RACEWAYS PROVIDED AS PART OF THIS PROJECT.
- 8 REFER TO PLANS FOR CONSTRAINTS ON PHYSICAL DIMENSIONS AND CLEARANCE REQUIREMENTS OF EQUIPMENT. PROVIDE EQUIPMENT DIMENSIONS THAT FALL WITHIN THE CONSTRAINTS OF EACH SPECIFIC LOCATION.
- 9 PROVIDE SERVICE RATED EQUIPMENT AT EACH SERVICE ENTRANCE.
- 10 SERVICE EQUIPMENT SHALL BE LEGIBLY MARKED IN THE FIELD WITH THE MAXIMUM AVAILABLE FAULT CURRENT. VERIFY OR RE-CALCULATE THE AVAILABLE FAULT CURRENT AT THE SERVICE WHERE MODIFICATIONS TO THE ELECTRICAL INSTALLATION OCCUR. PLEASE INCLUDE NOTES IN THE ELECTRICAL DRAWINGS OR SUPPLY CALCULATIONS WHERE APPLICABLE. SEE NEC 110.24, (B).



www.bndarchitects.com  
Phone 801.571.0010  
Fax 801.571.0303  
Toll Free 888.571.0010  
45 East Wadsworth Park Drive  
Suite 205 Draper, Utah 84020



324 S. State St., Suite 400  
Salt Lake City, UT 84111  
800-678-7077  
801-328-5151  
fax: 801-328-5155  
www.spectrum-engineers.com

THE CHURCH OF  
**JESUS CHRIST**  
OF LATTER-DAY SAINTS

**Taylor Landing**  
**Ogden UT West Stake**  
3691 West 2200 South, Ogden, Utah  
41.227032, -112.066630

**BHD #:** 2404  
**County Parcel:** 150780139  
**Plan Series:** Granger 300 ICF  
**Owner #:** 602-0268

Drawing Issue and Revision Schedule		
#	Date	Description
1	28 Mar 2025	Bld Drawings

**ELECTRICAL SITE PLAN**

**E111**