

#	Date	Description
1	28 Mar 2025	BD Drawings

**LANDSCAPE SCHEDULE**

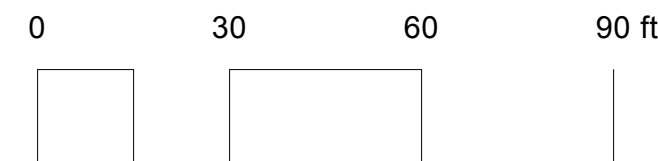
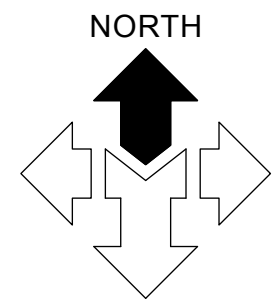
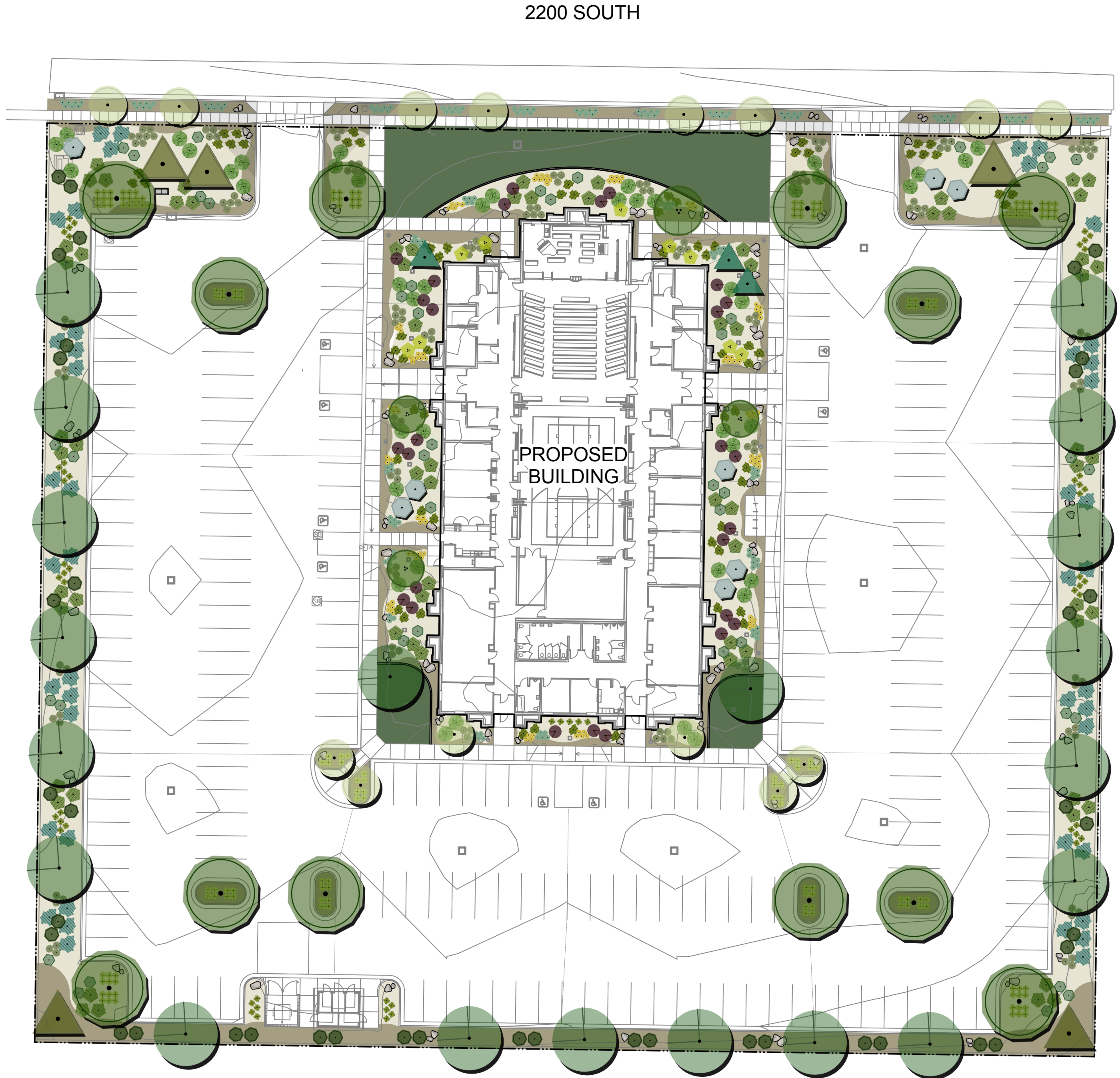
SYMBOL	QTY.	COMMON NAME	BOTANICAL NAME	SIZE	WATER ZONE	DETAIL
<b>DECIDUOUS TREES</b>						
	20	QUEEN ELIZABETH HEDGE MAPLE	ACER CAMPESTRE 'EVELYN'	2" CAL.	LOW (1/2" EVERY 10-14 DAYS)	D/L501
	4	BIGTOOTH MAPLE	ACER GRANDIDENTATUM	8-10' CLUMP	LOW (1/2" EVERY 10-14 DAYS)	D/L501
	14	SUMMER SPRITE LINDEN	TILIA CORDATA 'HALKA'	2" CAL.	LOW (1/2" EVERY 10-14 DAYS)	D/L501
	12	GREEN VASE ZELKOVA	ZELKOVA SERRATA 'GREEN VASE'	2" CAL.	LOW (1/2" EVERY 10-14 DAYS)	D/L501
<b>EVERGREEN TREES</b>						
	8	MOONGLOW JUNIPER	JUNIPERUS SCOPULORUM 'MOONGLOW'	5' HT.	Moderate to low	E/L501
	3	WELLS RIVERSIDE SERBIAN SPRUCE	PICEA OMORIKA 'WELLS RIVERSIDE'	7' HT.	MODERATE (1/2" EVERY 7-10 DAYS)	E/L501
	5	PINYON PINE	PINUS EDULIS	5' HT.	VERY LOW (WATER TO ESTABLISH)	E/L501
<b>SHRUBS</b>						
	44	KINNIKINICK	ARCTOSTAPHYLOS UVA URSI 'MASSACHUSETTS'	5 GAL.	LOW (1/2" EVERY 10-14 DAYS)	B/L501
	66	ALPINE CARPET JUNIPER	JUNIPERUS COMMUNIS 'MONDAP'	5 GAL.	VERY LOW (WATER TO ESTABLISH)	B/L501
	45	BLUE RUG JUNIPER	JUNIPERUS HORIZONTALIS 'WILTON'	3 GAL.	LOW (1/2" EVERY 10-14 DAYS)	B/L501
	27	SUMMER WINE NINEBARK	PHYSCARPUS OPULIFOLIUS 'SEWARD'	5 GAL.	LOW (1/2" EVERY 10-14 DAYS)	B/L501
	69	PAWNEE BUTTES WESTERN SAND CHERRY	PRUNUS BESSEYI 'PAWNEE BUTTES'	5 GAL.	LOW (1/2" EVERY 10-14 DAYS)	B/L501
	40	LACETTE FRAGRANT SUMAC	RHUS AROMATICA 'FINE TEXTURED COMPACT SELECT A' PP 28669	5 GAL.	LOW (1/2" EVERY 10-14 DAYS)	B/L501
	9	TIGER EYES SUMAC	RHUS TYPHINA 'BALTIGER'	5 GAL.	LOW (1/2" EVERY 10-14 DAYS)	B/L501
	41	COMMON SNOWBERRY	SYMPHORICARPOS ALBUS	5 GAL.	LOW (1/2" EVERY 10-14 DAYS)	B/L501
<b>ORNAMENTAL GRASSES</b>						
	144	BLONDE AMBITION BLUE GRAMA GRASS	BOUTELOUA GRACILIS 'BLONDE AMBITION'	1 GAL.	LOW (1/2" EVERY 10-14 DAYS)	A/L501
	55	FOERSTER'S FEATHER REED GRASS	CALAMAGROSTIS X ACUTIFLORA 'KARL FOERSTER'	1 GAL.	LOW (1/2" EVERY 10-14 DAYS)	A/L501
	161	ATLAS FESCUE	FESTUCA MAIREI	1 GAL.	LOW (1/2" EVERY 10-14 DAYS)	A/L501
	157	SAPPHIRE BLUE OAT GRASS	HELICTOTRICHON SEMPERVIRENS 'SAPHIRSPRUDEL'	1 GAL.	LOW (1/2" EVERY 10-14 DAYS)	A/L501
<b>PERENNIALS</b>						
	92	STEPSUNS SUNSET GLOW PENSTEMON	PENSTEMON PINIFOLIUS 'P019S'	1 GAL.	LOW (1/2" EVERY 10-14 DAYS)	B/L501
<b>BOULDERS</b>						
	109	'BROWNS CANYON' BOULDERS		2'-4" DIAMETER IN ALL DIRECTIONS		BOULDERS FROM BROWN'S CANYON QUARRY. CONTACT ONE SOURCE MATERIALS, ONESOURCEMATERIALS.COM, (385) 447-9374.
<b>CRUSHED ROCK</b>						
	10,556 S.F.	'SOUTH TOWN' COBBLE		2"-4" DIAMETER		INSTALLED A MINIMUM 3" DEEP. INSTALL OVER DEWITTS 4.1 WEED BARRIER FABRIC. CRUSHED ROCK SHALL BE FREE OF DIRT & OTHER FOREIGN DEBRIS.
	24,733 S.F.	'MOUNTAIN VALLEY' CRUSHED ROCK		1" DIAMETER		INSTALLED A MINIMUM 3" DEEP. INSTALL OVER DEWITTS 4.1 WEED BARRIER FABRIC. CRUSHED ROCK SHALL BE FREE OF DIRT & OTHER FOREIGN DEBRIS.
<b>LAWN</b>						
	3,736 S.F.	'DESERT SAGE' LAWN SOD - TWCA CERTIFIED				INSTALL OVER MINIMUM 5" TOPSOIL LAYER.
ALWAYS PLANT ACCORDING TO CENTER POINT OF THE SYMBOL						

**PLANT COVERAGE**

	SHRUBS - MATURE COVERAGE	ACTUAL %	TREE PURPOSE	ACTUAL %	% REQUIRED BY LOCAL JURISDICTION
STREET FRONTAGE	25% - 50%	36%	FRAME BUILDING	20%	
PRIMARY ENTRIES	30% - 55%	54%	FRAME ENTRY	6%	N/A
BUILDING PERIMETER	25% - 45%	48%	ACCENT BUILDING	20%	
PERIMETER	5% - 15%	27%	SCREEN LOT	33%	

**LANDSCAPE DATA**

	TOTAL SITE AREA	148,682 S.F.	% OF SITE/LANDSCAPE	% / # REQUIRED BY LOCAL JURISDICTION
TOTAL LANDSCAPE AREA	38,412 S.F.	39%	10%	
SHRUBS/GROUND COVER	12,854 S.F.	36%	N/A	
LAWN AREA	3,736 S.F.	10%	N/A	
TREES ON SITE	57	N/A	N/A	



AVOID CUTTING UNDERGROUND UTILITIES. IT'S COSTLY.

**Call BEFORE YOU Dig**

1-800-662-4111

**NOTICE!**

THE CONTRACTOR SHALL BE RESPONSIBLE FOR THE LOCATION, PROTECTION, AND RESTORATION OF ALL BURIED OR ABOVE GROUND UTILITIES SHOWN OR NOT SHOWN ON THE PLANS.





**REFERENCE NOTES**

L-1. CONCRETE MOWSTRIP  
SEE DETAIL VL501



www.bhdarchitects.com  
 Phone 801.571.0010  
 Fax 801.571.0303  
 Toll Free 888.571.0010  
 65 East Wadsworth Park Drive  
 Suite 205 Draper, Utah 84020



**THE CHURCH OF  
 JESUS CHRIST  
 OF LATTER-DAY SAINTS**

**Taylor Landing  
 Ogden UT West Stake**

3691 West 2200 South, Ogden, Utah  
 41.227032, -112.088630

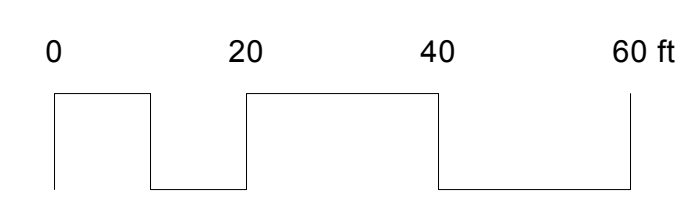
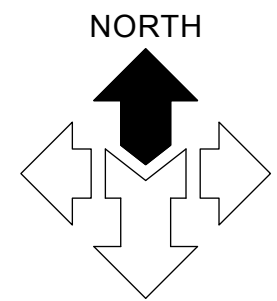
**Date:** 28 Mar 2025  
**BHD #:** 2404  
**County Parcel:** 150780139  
**Plan Series:** Granger 300 ICF  
**Owner #:** 602-0268

**Drawing Issue and Revision Schedule**

#	Date	Description
1	28 Mar 2025	Bld Drawings

**LANDSCAPE  
 PLANTING  
 PLAN**

**L112**



AVOID CUTTING UNDERGROUND UTILITIES. IT'S COSTLY.

**Call**  
 BEFORE YOU  
**Dig**  
 1-800-662-4111

**NOTICE!**  
 THE CONTRACTOR SHALL BE RESPONSIBLE FOR THE LOCATION, PROTECTION, AND RESTORATION OF ALL BURIED OR ABOVE GROUND UTILITIES SHOWN OR NOT SHOWN ON THE PLANS.