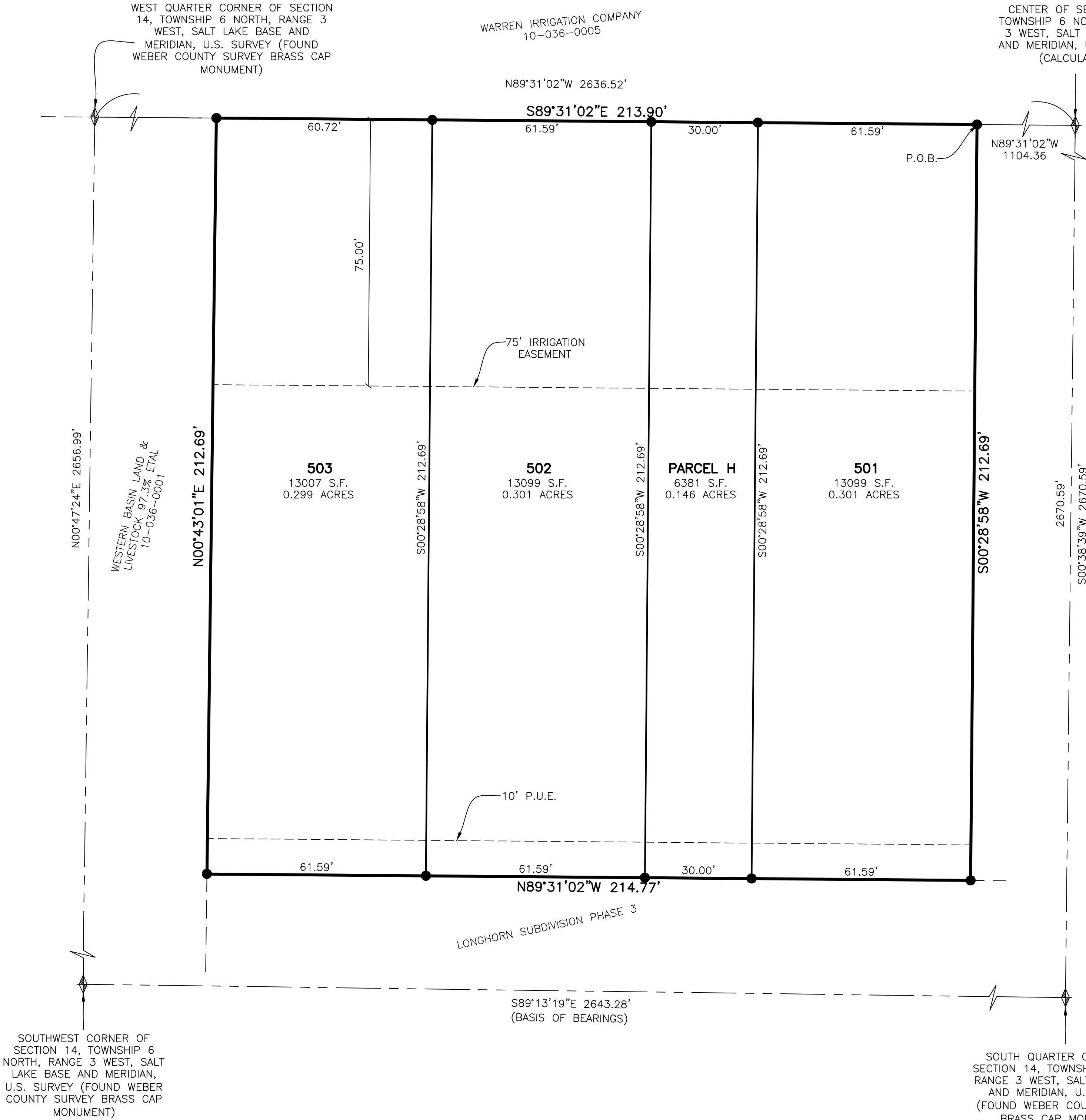


LONGHORN SUBDIVISION PHASE 5

PART OF THE SOUTHWEST QUARTER OF SECTION 14, TOWNSHIP 6 NORTH, RANGE 3 WEST, SALT LAKE BASE AND MERIDIAN, U.S. SURVEY  
WEBER COUNTY, UTAH  
MARCH, 2025

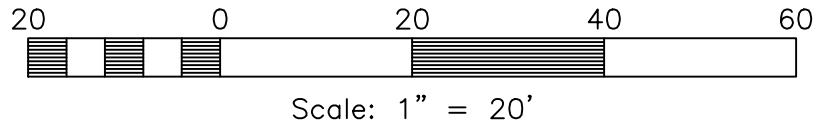


VICINITY MAP  
NOT TO SCALE



LEGEND

- = SECTION CORNER
- = SET 5/8" REBAR AND PLASTIC CAP STAMPED "REEVE AND ASSOCIATES"
- = SET CENTERLINE MONUMENT
- = BOUNDARY LINE
- = LOT LINE
- = SECTION TIE LINE
- = ADJOINING PROPERTY
- = EASEMENT
- = PUBLIC UTILITY EASEMENT



BASIS OF BEARINGS

A LINE BEARING SOUTH 89°13'19" EAST BETWEEN THE SOUTHWEST CORNER AND THE SOUTH QUARTER CORNER OF SECTION 14, TOWNSHIP 6 NORTH, RANGE 3 WEST, SALT LAKE BASE AND MERIDIAN, U.S. SURVEY WAS USED AS THE BASIS OF BEARINGS FOR THIS SURVEY.

NARRATIVE

THE PURPOSE OF THIS PLAT IS TO DIVIDE THE BELOW DESCRIBED PROPERTY INTO LOTS, PARCELS, AND STREETS AS SHOWN. ALL PROPERTY CORNERS WERE SET WITH A 5/8" X 24" REBAR AND PLASTIC CAP STAMPED "REEVE & ASSOCIATES".

BOUNDARY DESCRIPTION

PART OF THE SOUTHWEST QUARTER OF SECTION 14, TOWNSHIP 6 NORTH, RANGE 3 WEST, SALT LAKE BASE AND MERIDIAN, U.S. SURVEY, MORE PARTICULARLY DESCRIBED AS FOLLOWS:

BEGINNING AT THE WEST LINE OF LONGHORN SUBDIVISION PHASE 3, SAID POINT BEING 2670.59 FEET SOUTH 00°38'39" WEST AND 1104.36 FEET NORTH 89°31'02" WEST ALONG THE SECTION LINES FROM THE SOUTH QUARTER CORNER OF SAID SECTION 14 (SOUTH QUARTER CORNER BEING SOUTH 89°13'19" EAST 2643.28 FEET FROM THE SOUTHWEST CORNER OF SAID SECTION 14); THENCE SOUTH 00°28'58" WEST 212.69 FEET ALONG SAID WEST LINE; THENCE NORTH 89°31'02" WEST 214.77 FEET; THENCE NORTH 00°43'01" EAST 212.69 FEET; THENCE SOUTH 89°31'02" EAST 213.90 FEET TO THE WEST LINE OF LONGHORN SUBDIVISION PHASE 3 AND TO THE POINT OF BEGINNING.

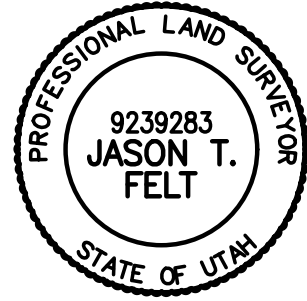
CONTAINING 45,586 SQUARE FEET OR 1.047 ACRES.

SURVEYOR'S CERTIFICATE

I, **JASON T. FELT**, DO HEREBY CERTIFY THAT I AM A PROFESSIONAL LAND SURVEYOR IN THE STATE OF UTAH IN ACCORDANCE WITH TITLE 58, CHAPTER 22, PROFESSIONAL ENGINEERS AND PROFESSIONAL LAND SURVEYORS ACT; AND THAT I HAVE COMPLETED A SURVEY OF THE PROPERTY DESCRIBED ON THIS PLAT IN ACCORDANCE WITH SECTION 17-23-17 AND HAVE VERIFIED ALL MEASUREMENTS, AND HAVE PLACED MONUMENTS AS REPRESENTED ON THIS PLAT, AND THAT THIS PLAT OF **LONGHORN SUBDIVISION PHASE 5** IN **WEBER COUNTY**, UTAH, HAS BEEN DRAWN CORRECTLY TO THE DESIGNATED SCALE AND IS A TRUE AND CORRECT REPRESENTATION OF THE HEREIN DESCRIBED LANDS INCLUDED IN SAID SUBDIVISION, BASED UPON DATA COMPILED FROM RECORDS IN THE **WEBER COUNTY** RECORDER'S OFFICE AND FROM SAID SURVEY MADE BY ME ON THE GROUND. I FURTHER CERTIFY THAT THE REQUIREMENTS OF ALL APPLICABLE STATUTES AND ORDINANCES OF **WEBER COUNTY** CONCERNING ZONING REQUIREMENTS REGARDING LOT MEASUREMENTS HAVE BEEN COMPLIED WITH.

SIGNED THIS \_\_\_\_\_ DAY OF \_\_\_\_\_, 20\_\_\_\_.

**9239283**  
UTAH LICENSE NUMBER



OWNERS DEDICATION AND CERTIFICATION

WE THE UNDERSIGNED OWNERS OF THE HEREIN DESCRIBED TRACT OF LAND, DO HEREBY SET APART AND SUBDIVIDE THE SAME INTO ONE LOT AS SHOWN ON THE PLAT AND NAME SAID TRACT **LONGHORN SUBDIVISION PHASE 5**, AND DO HEREBY GRANT AND DEDICATE A PERPETUAL RIGHT AND EASEMENT OVER, UPON AND UNDER THE LANDS DESIGNATED HEREON AS PUBLIC UTILITY AND DRAINAGE EASEMENTS, SEWER EASEMENTS, AND IRRIGATION CANAL EASEMENTS, THE SAME TO BE USED FOR THE INSTALLATION MAINTENANCE AND OPERATION OF PUBLIC UTILITY SERVICE LINE, STORM DRAINAGE FACILITIES, IRRIGATION CANALS OR FOR THE PERPETUAL PRESERVATION OF WATER CHANNELS IN THEIR NATURAL STATE WHICHEVER IS APPLICABLE AS MAY BE AUTHORIZED BY THE GOVERNING AUTHORITY, WITH NO BUILDINGS OR STRUCTURES BEING ERECTED WITHIN SUCH EASEMENTS AND DO HEREBY DEDICATE A 75 FOOT IRRIGATION EASEMENT TO WARREN IRRIGATION COMPANY TO BE OWNED AND MAINTAINED BY THE INDIVIDUAL LOT OWNER AND DO HEREBY DEDICATE PARCEL H TO WEBER COUNTY AS OPEN SPACE.

SIGNED THIS \_\_\_\_\_ DAY OF \_\_\_\_\_, 20\_\_\_\_.

FOR: 2020 LLC

NAME/TITLE DATE

ACKNOWLEDGMENT

STATE OF UTAH )SS.  
COUNTY OF \_\_\_\_\_ )

ON THE \_\_\_\_\_ DAY OF \_\_\_\_\_, 20\_\_\_\_, PERSONALLY APPEARED BEFORE ME, THE UNDERSIGNED NOTARY PUBLIC, \_\_\_\_\_ BEING BY ME DULY SWORN, ACKNOWLEDGED TO ME THEY ARE \_\_\_\_\_ OF \_\_\_\_\_ AND THAT THEY SIGNED THE ABOVE OWNER'S DEDICATION AND CERTIFICATION FREELY, VOLUNTARILY, AND IN BEHALF OF SAID CORPORATION FOR THE PURPOSES THEREIN MENTIONED.

COMMISSION EXPIRES NOTARY PUBLIC

NOTE

NO BASEMENTS OR FINISHED FLOORS BELOW THE TBC ELEVATION

Developer:

PAT BURNS  
LYNC DEVELOPMENT  
1946 W 5600 S  
ROY, UT. 84067

WEBER COUNTY PLANNING COMMISSION APPROVAL

THIS IS TO CERTIFY THAT THIS SUBDIVISION PLAT WAS DULY APPROVED BY THE WEBER COUNTY PLANNING COMMISSION. SIGNED THIS \_\_\_\_\_ DAY OF \_\_\_\_\_, 20\_\_\_\_.

CHAIRMAN, WEBER COUNTY PLANNING COMMISSION

WEBER COUNTY ENGINEER

I HEREBY CERTIFY THAT THE REQUIRED PUBLIC IMPROVEMENT STANDARDS AND DRAWINGS FOR THIS SUBDIVISION CONFORM WITH THE COUNTY STANDARDS AND THE AMOUNT OF THE FINANCIAL GUARANTEE IS SUFFICIENT FOR THE INSTALLATION OF THESE IMPROVEMENTS.

WEBER COUNTY ENGINEER

WEBER COUNTY COMMISSION ACCEPTANCE

THIS IS TO CERTIFY THAT THIS SUBDIVISION PLAT, THE DEDICATION OF STREETS AND OTHER PUBLIC WAYS AND FINANCIAL GUARANTEE OF PUBLIC IMPROVEMENTS ASSOCIATED WITH THIS SUBDIVISION, THEREON ARE HEREBY APPROVED AND ACCEPTED BY THE COMMISSIONERS OF WEBER COUNTY, UTAH. SIGNED THIS \_\_\_\_\_ DAY OF \_\_\_\_\_, 20\_\_\_\_.

CHAIRMAN, WEBER COUNTY COMMISSION

ATTEST TITLE

WEBER COUNTY SURVEYOR

I HEREBY CERTIFY THAT THE WEBER COUNTY SURVEYOR'S OFFICE HAS REVIEWED THIS PLAT AND ALL CONDITIONS FOR APPROVAL BY THIS OFFICE HAVE BEEN SATISFIED. THE APPROVAL OF THIS PLAT BY THE WEBER COUNTY SURVEYOR DOES NOT RELIEVE THE LICENSED LAND SURVEYOR WHO EXECUTED THIS PLAT FROM THE RESPONSIBILITIES AND/OR LIABILITIES ASSOCIATED THEREWITH

SIGNED THIS \_\_\_\_\_ DAY OF \_\_\_\_\_, 20\_\_\_\_.

WEBER COUNTY SURVEYOR

WEBER COUNTY ATTORNEY

I HAVE EXAMINED THE FINANCIAL GUARANTEE AND OTHER DOCUMENTS ASSOCIATED WITH THIS SUBDIVISION PLAT, AND IN MY OPINION THEY CONFORM WITH THE COUNTY ORDINANCE APPLICABLE THERETO AND NOW IN FORCE AND AFFECT. SIGNED THIS \_\_\_\_\_ DAY OF \_\_\_\_\_, 20\_\_\_\_.

WEBER COUNTY ATTORNEY

WEBER-MORGAN HEALTH DEPARTMENT

I HEREBY CERTIFY THAT THE SOILS, PERCOLATION RATES, AND SITE CONDITIONS FOR THIS SUBDIVISION HAVE BEEN INVESTIGATED BY THIS OFFICE AND ARE APPROVED FOR ON-SITE WASTEWATER DISPOSAL SYSTEMS. SIGNED THIS \_\_\_\_\_ DAY OF \_\_\_\_\_, 20\_\_\_\_.

DIRECTOR, WEBER-MORGAN HEALTH DEPARTMENT

Weber County Recorder

Entry No. \_\_\_\_\_ Fee Paid \_\_\_\_\_  
At \_\_\_\_\_ Filed For Record \_\_\_\_\_  
And Recorded, \_\_\_\_\_  
At \_\_\_\_\_ In Book \_\_\_\_\_  
Of The Official Records, Page \_\_\_\_\_  
Recorded For: \_\_\_\_\_

Weber County Recorder

Deputy.