

# The Ogden Valley Community Church Huntsville, UT

**OVC BUILDING SPECS:**

**FOUNDATION:**

Foundation footings will consist of 3000 PSI concrete footings with reinforcement placed per plan. The footings will bear on excavated and undisturbed native soils.  
Foundation walls will be constructed on bearing footings and will be 8" thick 3000 PSI concrete solid poured with reinforcement steel placed per plans.

**CONCRETE FLOORING:**

Concrete slab will be cast in place using 3000PSI concrete. The slab will be a nominal thickness of 4" and be reinforced with a #10 #10 welded wire mesh. Additional reinforcing steel will be added per structural foundation plans. The slab will be finished with an industrial burn finish and sealer system. Note that there will likely be hairline, spider, and small cracks in the surface of the finish. This is normal and is a result of the concrete shrinking as it cures. No fixes or remedies for this are in place for this slab.

**STEEL BUILDING:**

Steel building will be pre-manufactured by others, delivered to site and erected per all specifications, and procedures necessary to complete the work. Steel building will consist of 4 column 4 rafter bays spaced per plan. The columns and rafters will be attached joined by purins and girts. That will be covered on the exterior by a corrugated metal wall sheet with exposed fasteners. The roof will be covered with a standing seam concealed fastener roof system.

**INTERIOR FRAMING:**

Interior partition walls will be framed using metal studs of a nominal 2"x4" size and spaced at 16" O.C. typical max spacing.

**INTERIOR WALL FINISHES:**

Interior walls will be finished with 1/2" gypsum boards fastened per code. Walls will be finished smooth and painted with a 2 coat paint system. First coat will be a tinted primer and the finish coat will be the final color in a light tone taupe / gray color TBD. Darker colors or multiple colors can be requested and will carry an additional charge. All walls will have a vinyl base system in a set color TBD.

**INTERIOR CEILING FINISHES:**

All ceilings outside of The Sanctuary will be suspended acoustical type ceilings. All ceiling materials will be white. Ceiling in The Sanctuary will be a gypsum wall board ceiling with a textured finish.

**INTERIOR DOORS:**

Interior doors will be solid slab oak doors with a clear coat lacquer finish. All doors entering into classrooms, kitchen, office space will be fitted with a view window approximately 12" wide x 36" long.  
All doors entering into storage closets and bathrooms will be solid slab doors - no view windows!  
All interior doors will be hung on a pre-manufactured metal frame by Timsly. The frame color is figured for black but can be picked from a number of standard colors. The metal frame will also be the finished frame for the door. Drywall will be pushed into it and caulked into place.  
All interior doors will be supplied with auto-close mechanisms.  
All emergency passage doors will be supplied with rim device per code. Device specified is Von Duprin Series 22 Rim Device in aluminum finish.

All doors will have aluminum lever style door handles, Schlage ALIOS. No interior doors are fitted with locks, all are passage.  
Interior doors will have 236A concave wall stops.

**EXTERIOR DOORS:**

Front entry double door unit will be a glass storefront unit. Lever type door handle hardware and lock exterior and Von Duprin Series 22 Rim Device with flip lock on the interior.  
All other doors exiting the building will be solid metal doors. No glass is figured in for these doors. Lever type door handle hardware and lock exterior. Saturn 626, and panic bar with flip lock on the interior. Von Duprin Series 230L aluminum is specified.

**EXTERIOR WINDOWS:**

All windows are figured for vinyl frame low-e horizontal slider type units. Operation of the units will be horizontal sliding with one fixed pane of glass and one operable pane of glass. Sizes per window schedule.

**FLOOR FINISHES:**

No floor finishes are specified for this project. All floor areas throughout will be a smooth industrial burn finish. Industrial burn is a method of finishing concrete with a high speed mechanical trowel that 'burns' the finish by means of friction and leaves a smooth dark grey finish. No provisions for slip control on the concrete surface have been made.

**HVAC SYSTEMS:**

This project is figured for 3 combined heating and cooling systems total. 2 systems will be allocated to The Sanctuary, and one system will be allocated to the remaining rooms in the building.  
The 2 units for The Sanctuary will be installed over the kitchen. There will be one unit per side of the space, one to the North and one to the South. The units will be designed and installed so that all supply air will be blown down duct work placed below the concrete floor system and directed up in registers along the North and South walls of The Sanctuary. The air will be returned to the units via wall mounted grilles in the upper portion of the East wall.  
Furnace units will be RUUD Achiever series R46P. Air Conditioning coils will be RUUD RCFL series units. Air Conditioning condenser will be ground set RUUD Value Series 18A-N.  
3 Bathrooms will be fitted with exhaust fans.

**ELECTRICAL SYSTEMS:**

Building is sized for a 200 Amp main service. A 200 Amp panel will be placed in The Sanctuary storage room at the South West corner of the building. All Romex wire running in walls will be sized according to code requirements. All Romex wire running exposed will be run in protective conduit.  
All suspended ceiling areas in enclosed rooms will have 2x4" Troffer 6T3LMV fluorescent fixtures by Lithonia Lighting.  
All suspended ceiling areas in halls and light spaces will have 2x2" Troffer 6T2Mv fluorescent fixtures by Lithonia Lighting.  
Lighting in the kitchen will be surface mount Square Basket Htrap 2x4" 58232Mv fluorescent fixtures by Lithonia Lighting.  
Sanctuary ceiling lighting will be 11" diameter compact fluorescent cylinders CF11M by Gotham Lighting.  
Sanctuary wall lighting will be 11" diameter compact fluorescent cylinders CF11M by Gotham Lighting.  
All light switches and wall outlets will be standard white type fixtures.  
Illuminated Exit signs will be hung above all exit doors. Fixtures will be Lithonia Lighting EXR LED EL M6.

**2 Specifications**

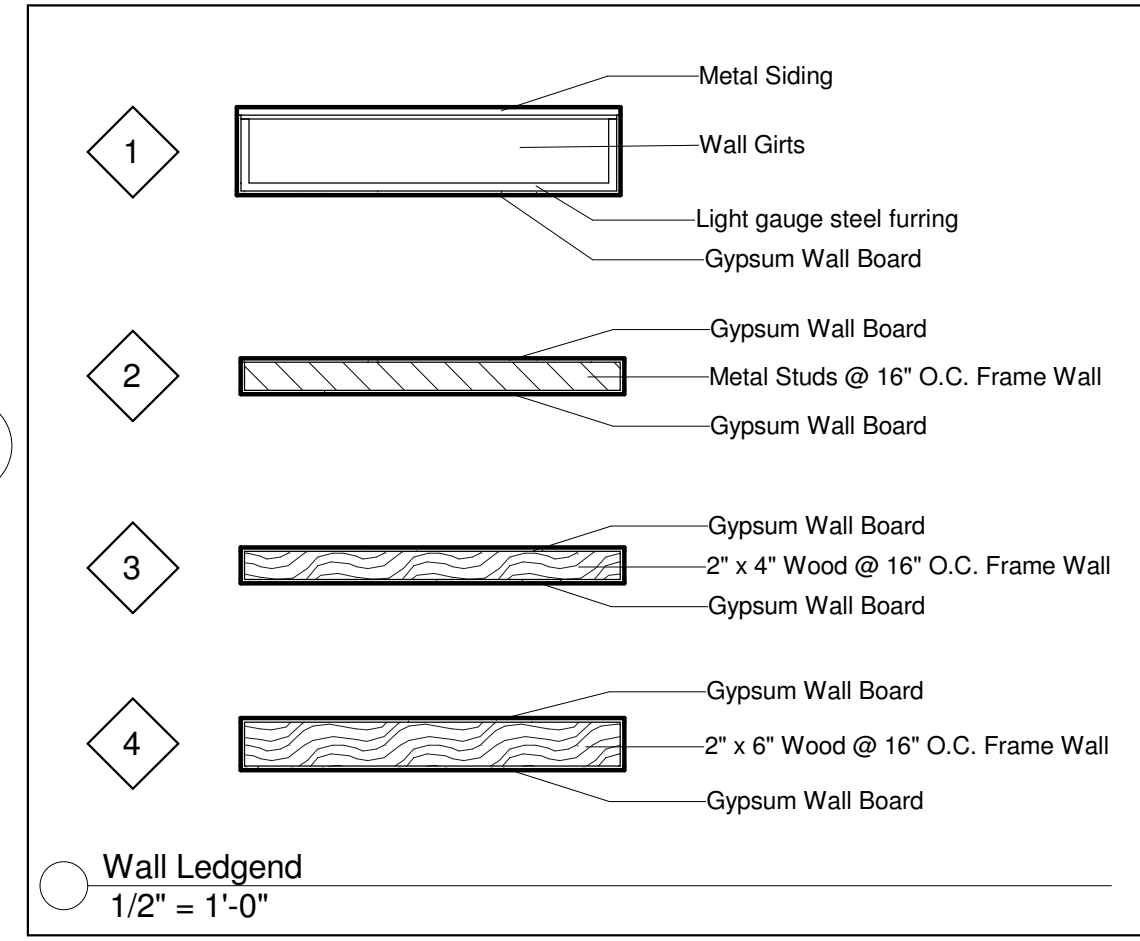
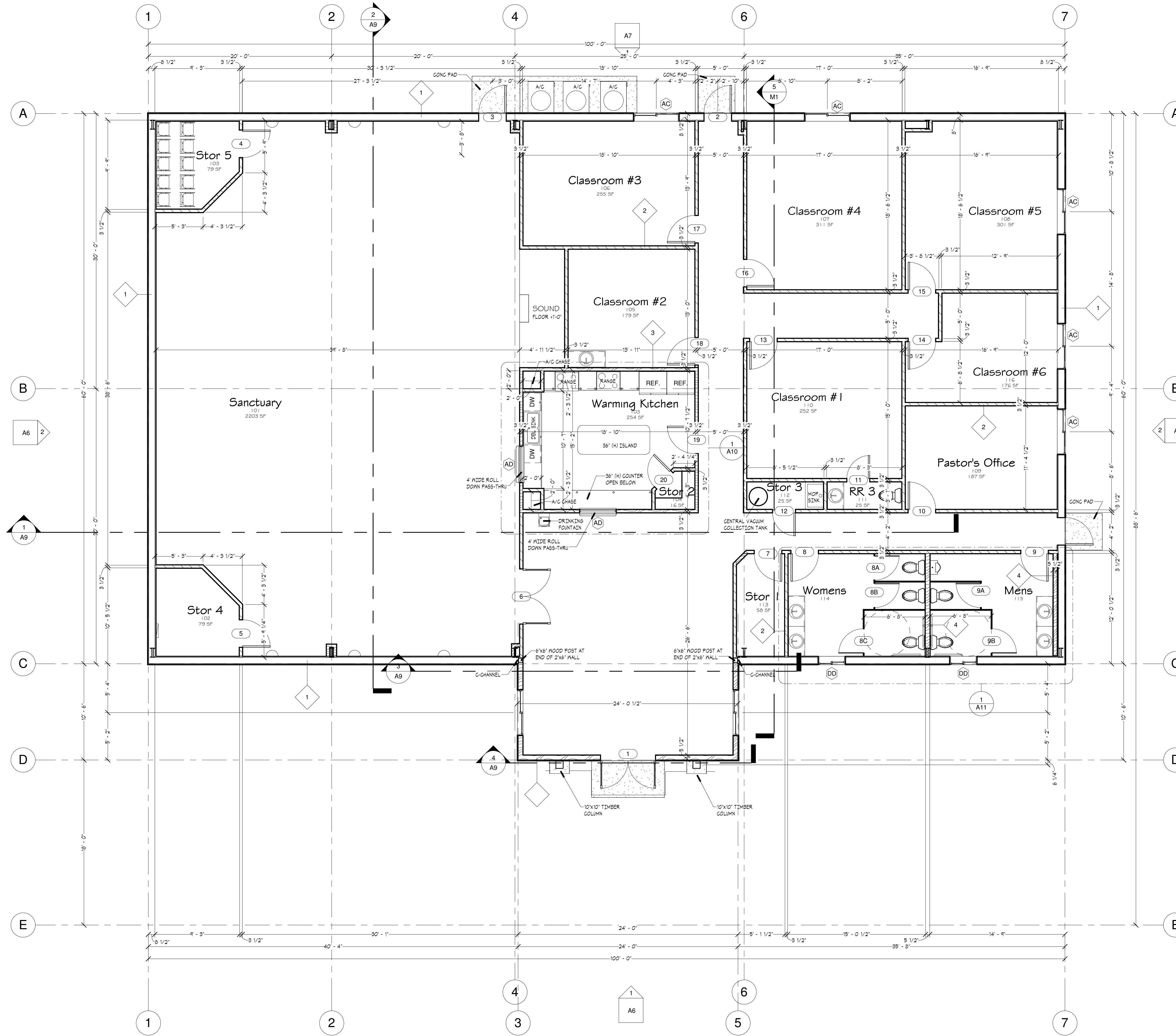
3/4" = 1'-0"



Sheet List			
Sheet Number	Sheet Name	Current Revision	Current Revision Date
A1	Cover Sheet		
A2	First Floor Plan		
A3	Rafter Plan		
A4	Main Floor Area Plan		
A5	First Floor Reflected Ceiling Plan		
A6	Elevations		
A7	Elevations		
A8	Roof Plan		
A9	Building Sections		
A10	Interior Elevations		
A11	Interior Details		
A12	Schedules		
E1	Electrical Plan		
M1	Mechanical Plan		
P1	Plumbing Plan		
S1	Foundation Plan		

2012 IBC CODE ANALYSIS			
OCCUPANCY GROUP	A-3		
CONSTRUCTION TYPE	II B		
ALLOWABLE AREA	= 8,500 SQ. FT. (TABLE 503)		
TOTAL BUILDING AREA	= 6,965 SQ. FT.		
OCCUPANT LOAD (TABLE 1004.1.2)			
SANCTUARY (1 NET)	1,898 SQ. FT.	= 270 OCC.	
CLASSROOMS (20 NET)	1,128 SQ. FT.	= 87 OCC.	
FOYER (100 GROSS)	872 SQ. FT.	= 7 OCC.	
KITCHEN (50 GROSS)	210 SQ. FT.	= 4 OCC.	
REST ROOMS (50 GROSS)	308 SQ. FT.	= 8 OCC.	
STORAGE (300 GROSS)	101 SQ. FT.	= 33 OCC.	
TOTAL STAFF		4 OCC.	
SANCTUARY STORAGE (300 GROSS)	168 SQ. FT.	=50 OCC.	
TOTAL OCCUPANCY LOAD		295	
TOTAL EXITS REQUIRED	4		
TOTAL EXITS PROVIDED	4		
CURRENT CODE EDITIONS			
2012 IBC	2012 IFBC	2010 ADA	2012 IFG
2012 IMC	2009 IECC	2011 NEC	2012 IFG
2009 UPC			

1 2012 IBC CODE ANALYSIS  
3/4" = 1'-0"



1 MAIN FLOOR  
3/16" = 1'-0"

**LUNDIN HOMES, LLC**  
 2485 GRANT AVENUE, SUITE #212 - OGDEN, UT 84401  
 P: 1 (801) 398 - 1960 F: 1 (801) 398 - 1961  
 GENERAL CONTRACTOR

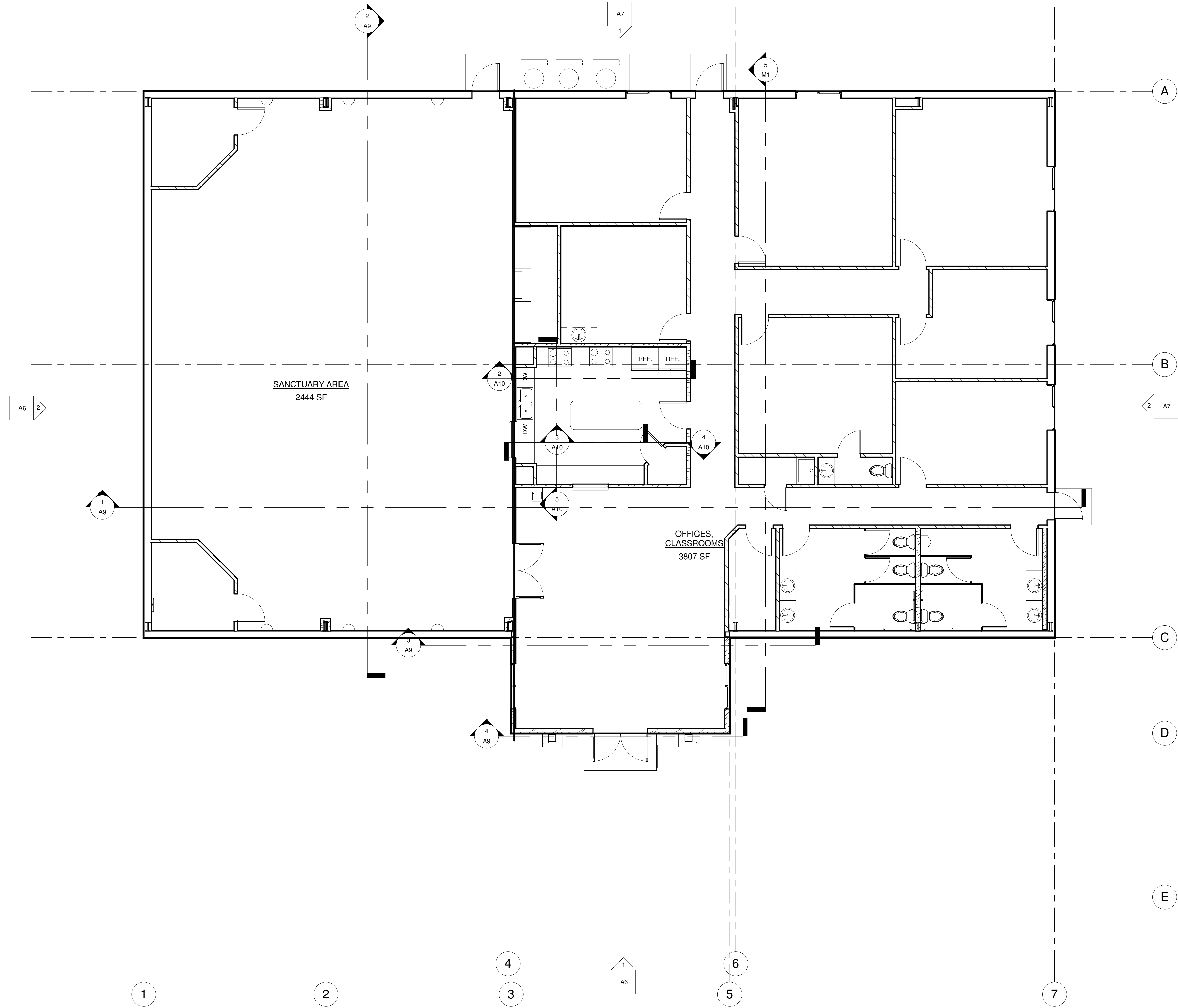
**LUNDIN DESIGN GROUP**  
 2485 GRANT AVENUE, SUITE #212 - OGDEN, UT 84401  
 P: 1 (801) 398 - 1960 F: 1 (801) 398 - 1961  
 DESIGN

**ARCHITECT**  
**JAMES O. CHAMBERLIN**  
 & ASSOCIATES  
 ARCHITECTS  
 177 E. ANTELOPE DR. #8  
 OGDEN, UT 84401  
 PHONE: (801) 408-5055  
 FAX: (801) 408-5065

The Ogden Valley  
 Community Church  
 Huntsville, UT  
 First Floor Plan

Project number	2014-06
Date	10/20/2014
Drawn by	Karl Lundin
Checked by	Karl Lundin

**A2**  
 Scale As indicated



1 MAIN FLOOR AREA PLAN  
3/16" = 1'-0"

**LUNDIN HOMES, LLC**  
 2495 GRANT AVENUE, SUITE #212 - OGDEN, UT 84401  
 P: 1 (801) 398 - 1960 F: 1 (801) 398 - 1961  
 GENERAL CONTRACTOR

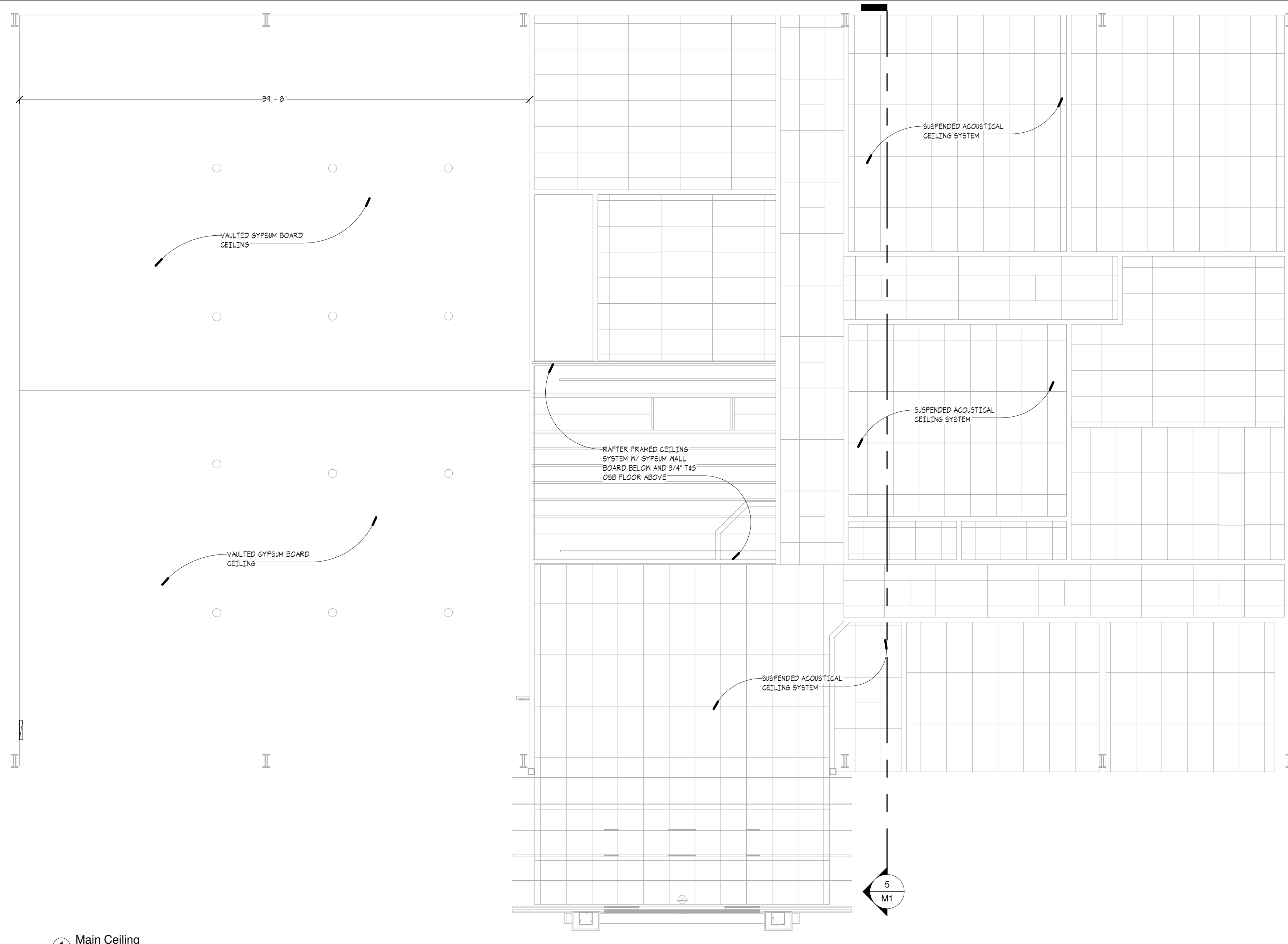
**LUNDIN DESIGN GROUP**  
 2495 GRANT AVENUE, SUITE #212 - OGDEN, UT 84401  
 P: 1 (801) 398 - 1960 F: 1 (801) 398 - 1961  
 DESIGN

**ARCHITECT**  
**JAMES O. CHAMBERLIN & ASSOCIATES ARCHITECTS**  
 177 E. ANTELOPE DR. #B  
 OGDEN, UT 84401  
 PHONE: (801) 408-5045  
 FAX: (801) 408-5065

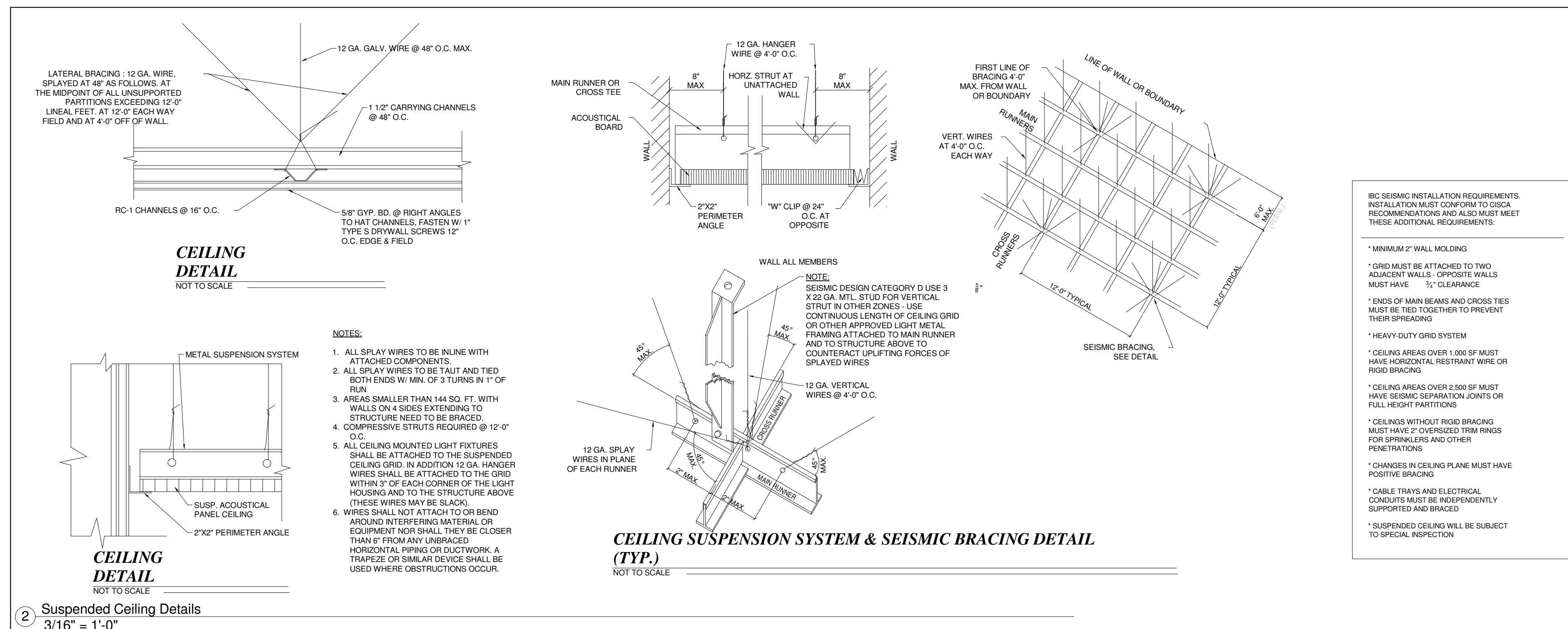
The Ogden Valley  
Community Church  
Huntsville, UT  
Main Floor Area Plan

Project number	2014-06
Date	10/20/2014
Drawn by	Karl Lundin
Checked by	Checker

**A4**  
Scale 3/16" = 1'-0"



1 Main Ceiling  
3/16" = 1'-0"



2 Suspended Ceiling Details  
3/16" = 1'-0"

**LUNDIN HOMES, LLC**  
GENERAL CONTRACTOR  
2485 GRANT AVENUE, SUITE #212 - OGDEN, UT 84401  
P: 1 (801) 348 - 1960 F: 1 (801) 348 - 1961

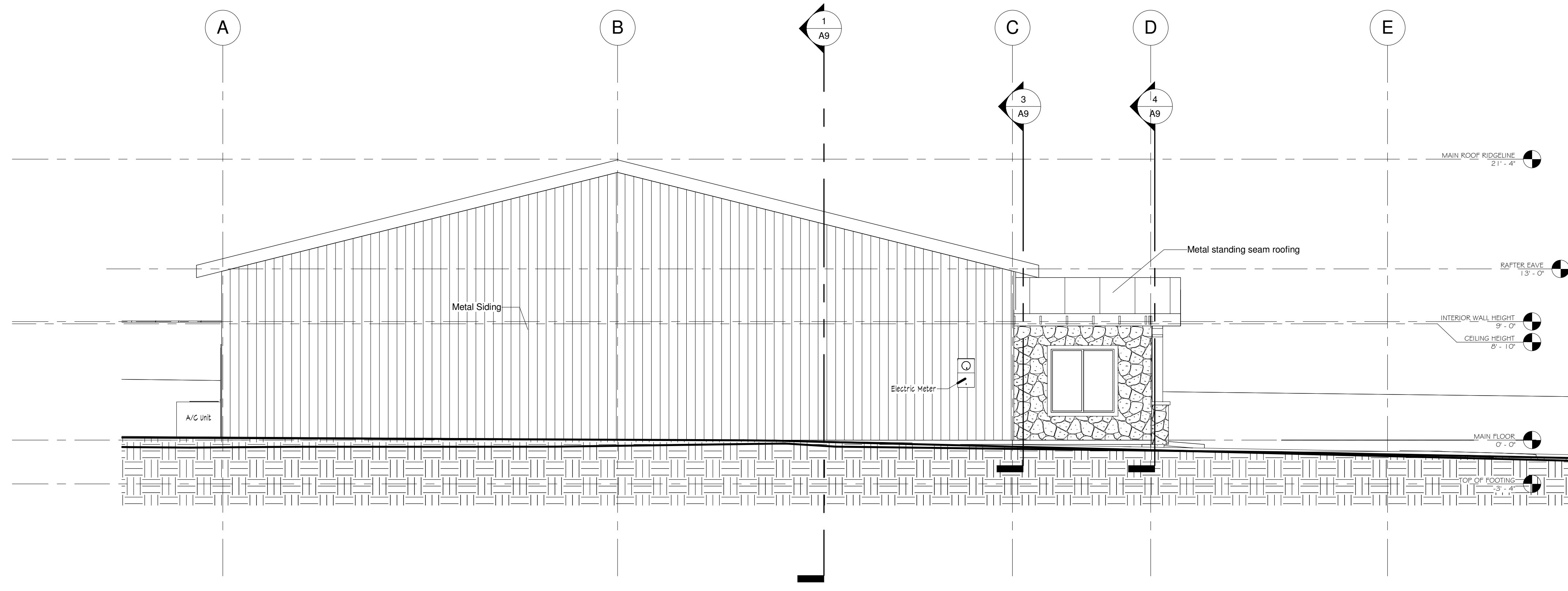
**LUNDIN DESIGN GROUP**  
DESIGN  
2485 GRANT AVENUE, SUITE #212 - OGDEN, UT 84401  
P: 1 (801) 348 - 1960 F: 1 (801) 348 - 1961

**ARCHITECT**  
JAMES O. CHAMBERLIN  
& ASSOCIATES  
ARCHITECTS  
177 E. ANTOINETTE DR. #B  
HUNTSVILLE, TN 37403  
PHONE: (615) 496-5055  
FAX: (615) 496-5065

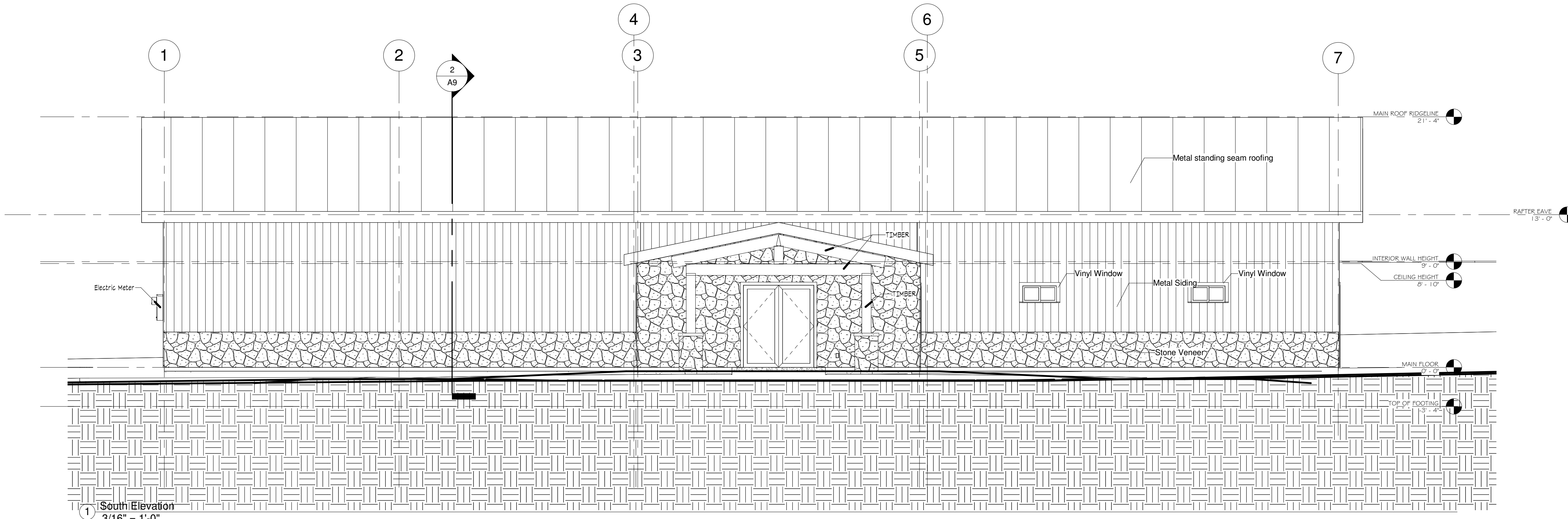
The Ogden Valley  
Community Church  
Huntsville, UT  
First Floor Reflected  
Ceiling Plan

Project number 2014-06  
Date 10/20/2014  
Drawn by Karl Lundin  
Checked by Checker

**A5**  
Scale 3/16" = 1'-0"



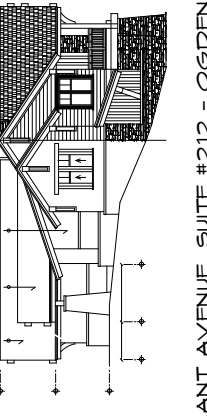
2 West Elevation  
3/16" = 1'-0"



1 South Elevation  
3/16" = 1'-0"

LUNDIN HOMES, LLC

2495 GRANT AVENUE, SUITE #212 - OGDEN, UT 84401  
P: 1 (801) 398 - 1960 F: 1 (801) 398 - 1961



LUNDIN DESIGN GROUP

2495 GRANT AVENUE, SUITE #212 - OGDEN, UT 84401  
P: 1 (801) 398 - 1960 F: 1 (801) 398 - 1961

DESIGN

ARCHITECT

JAMES O. CHAMBERLIN  
& ASSOCIATES  
ARCHITECTS



The Ogden Valley  
Community Church

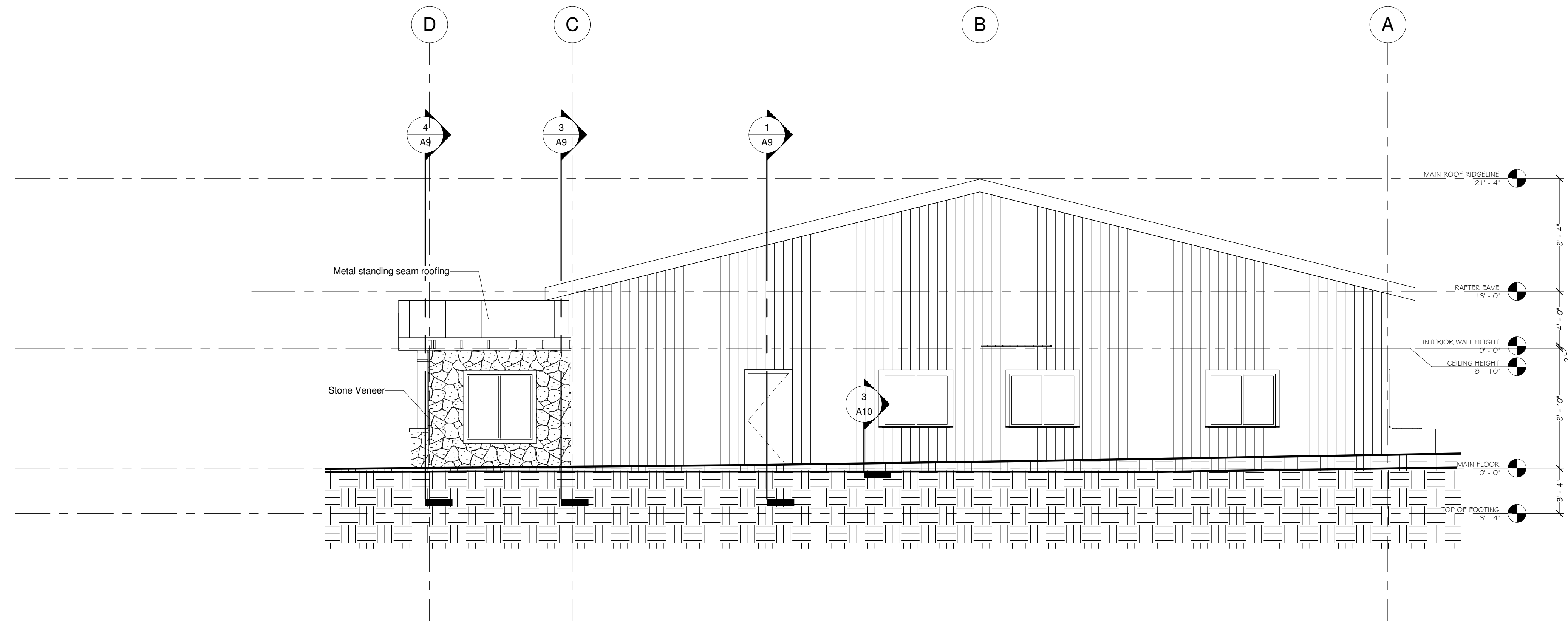
Huntsville, UT

Elevations

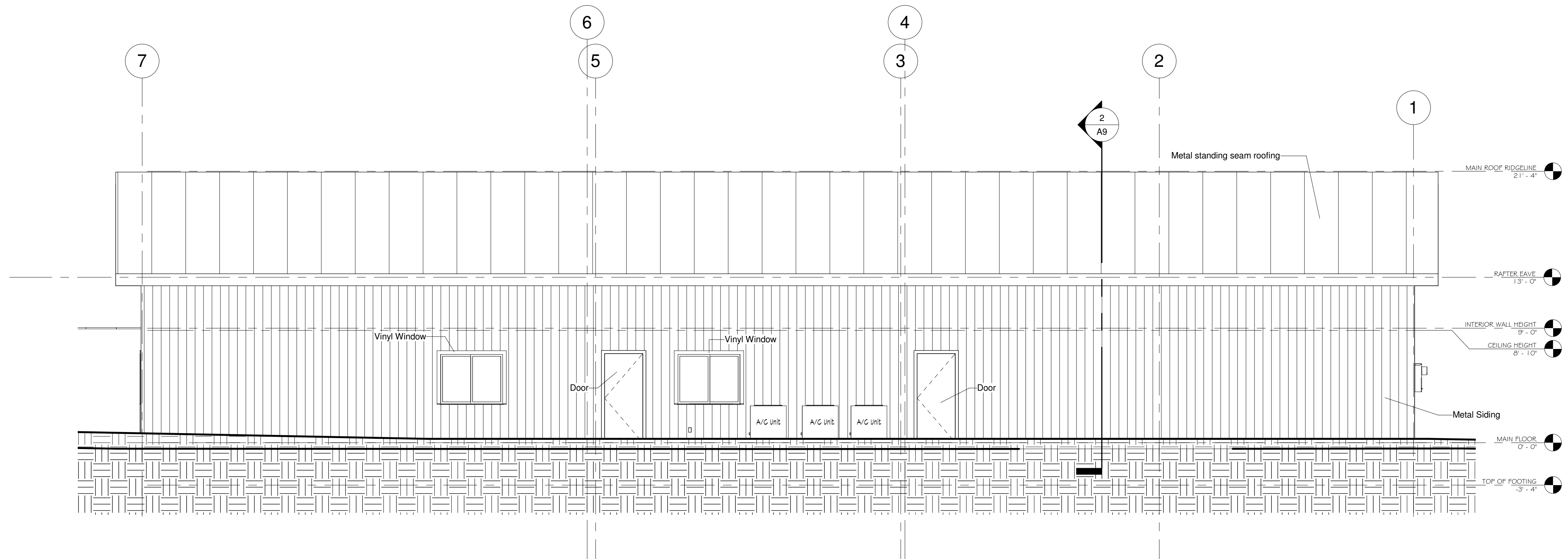
Project number	2014-06
Date	10/20/2014
Drawn by	Karl Lundin
Checked by	Checker

A6

Scale 3/16" = 1'-0"



② East Elevation  
3/16" = 1'-0"



① North Elevation  
3/16" = 1'-0"

LUNDIN HOMES, LLC



2485 GRANT AVENUE, SUITE #212 - OGDEN, UT 84401  
P: 1 (801) 348 - 1960 F: 1 (801) 348 - 1961

GENERAL CONTRACTOR

LUNDIN DESIGN GROUP



2485 GRANT AVENUE, SUITE #212 - OGDEN, UT 84401  
P: 1 (801) 348 - 1960 F: 1 (801) 348 - 1961

DESIGN

ARCHITECT



JAMES O. CHAMBERLIN  
& ASSOCIATES  
ARCHITECTS

The Ogden Valley  
Community Church

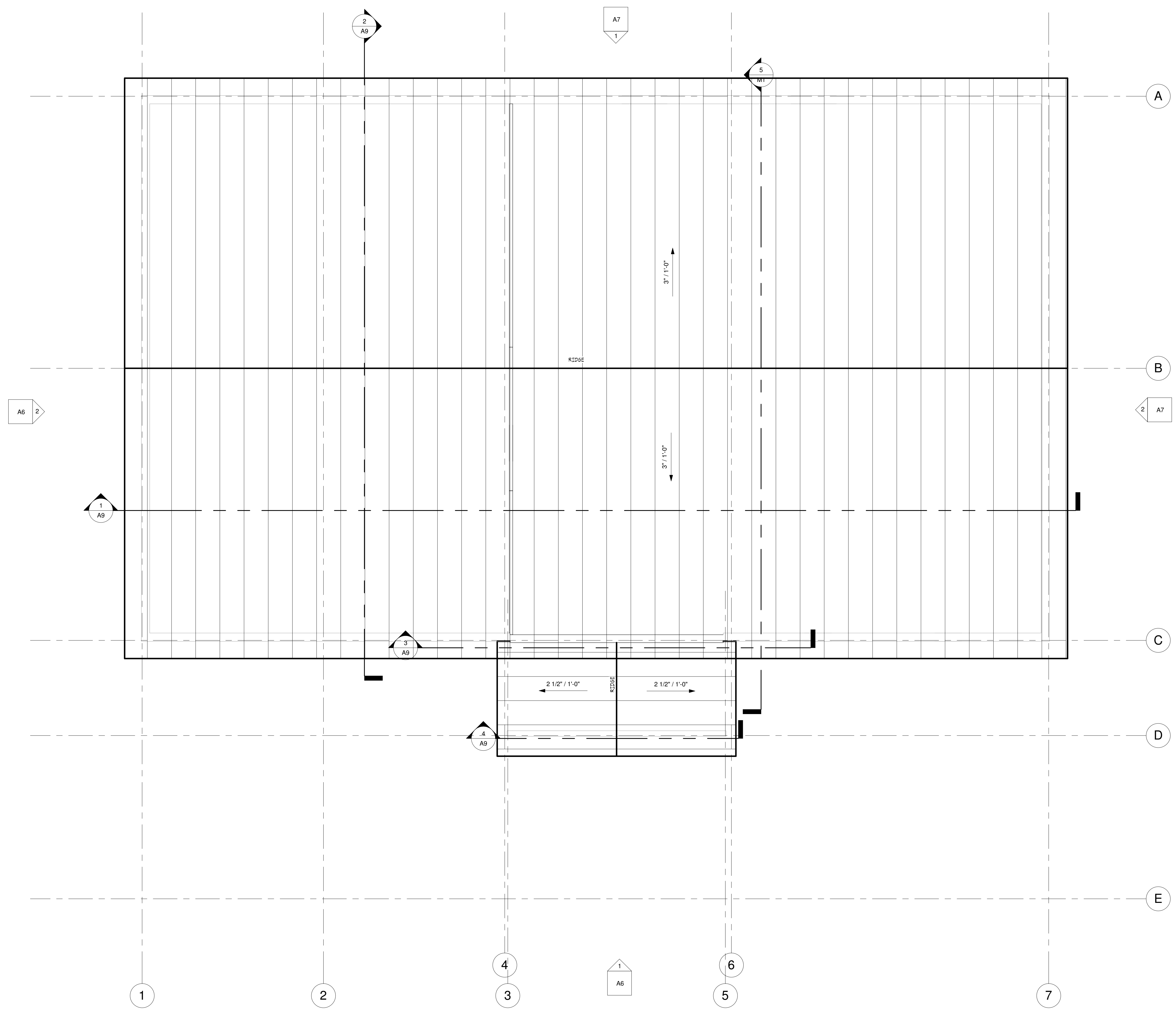
Huntsville, UT

Elevations

Project number	2014-06
Date	10/20/2014
Drawn by	Karl Lundin
Checked by	Checker

A7

Scale 3/16" = 1'-0"



NOTE:  
ALL WORK THIS SHEET TO  
BE BY STEEL BUILDING  
MANUFACTURER PACKAGE

1 ROOF PLAN  
3/16" = 1'-0"

**LUNDIN HOMES, LLC**  
 2495 GRANT AVENUE, SUITE #212 - OGDEN, UT 84401  
 P: 1 (801) 398 - 1960 F: 1 (801) 398 - 1961  
 GENERAL CONTRACTOR

**LUNDIN DESIGN GROUP**  
 2495 GRANT AVENUE, SUITE #212 - OGDEN, UT 84401  
 P: 1 (801) 398 - 1960 F: 1 (801) 398 - 1961  
 DESIGN

**ARCHITECT**  
**JAMES O. CHAMBERLIN**  
 & ASSOCIATES  
 ARCHITECTS  
 177 E. ANTELOPE DR. #B  
 HUNTSVILLE, UT 84401  
 PHONE: (801) 498-5045  
 FAX: (801) 498-5065

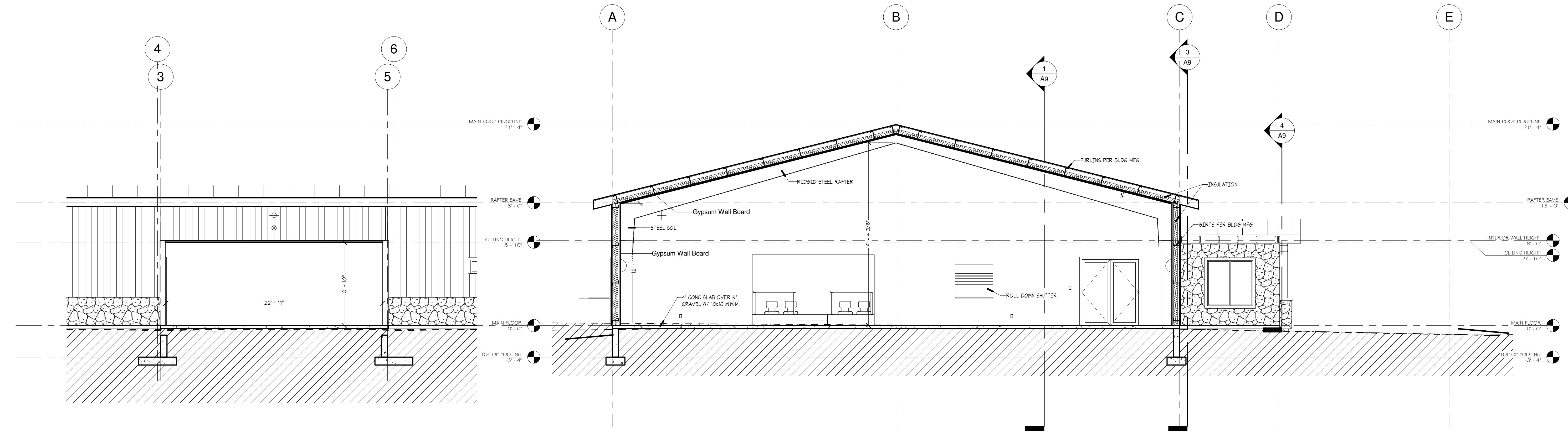
The Ogden Valley  
Community Church  
Huntsville, UT  
Roof Plan

Project number 2014-06  
 Date 10/20/2014  
 Drawn by Karl Lundin  
 Checked by Checker

**A8**  
 Scale 3/16" = 1'-0"

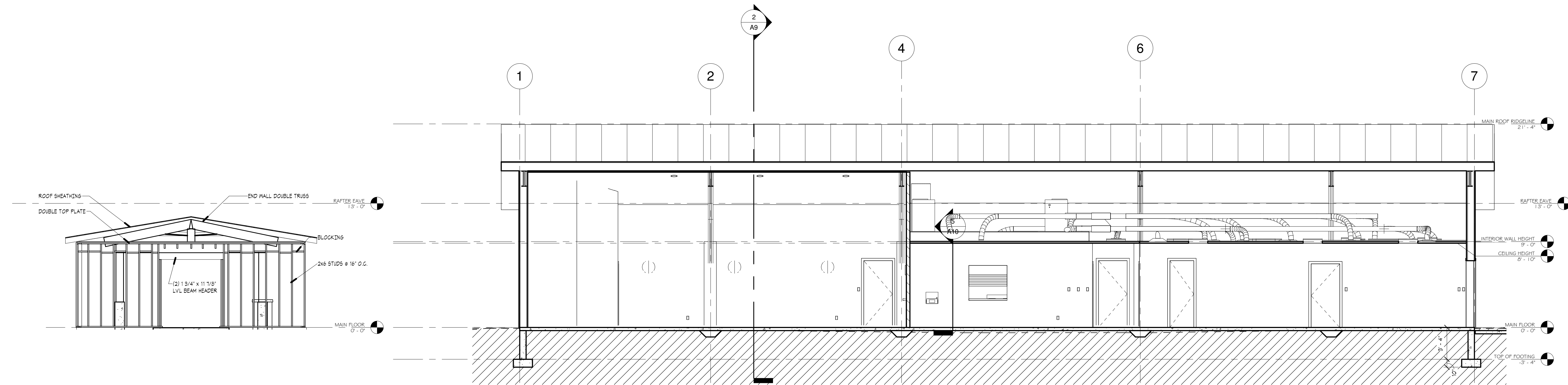
3 Entry Foyer Opening  
3/16" = 1'-0"

2 North/South Section  
3/16" = 1'-0"

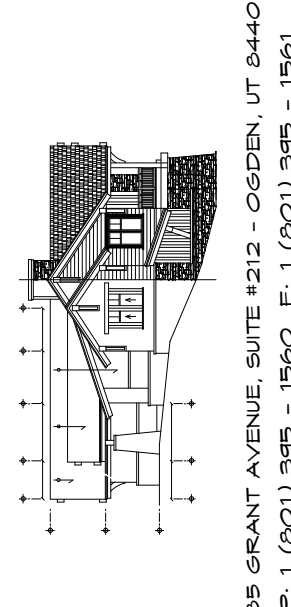


4 FOYER FRONT WALL FRAMING  
3/16" = 1'-0"

1 East/West Section  
3/16" = 1'-0"



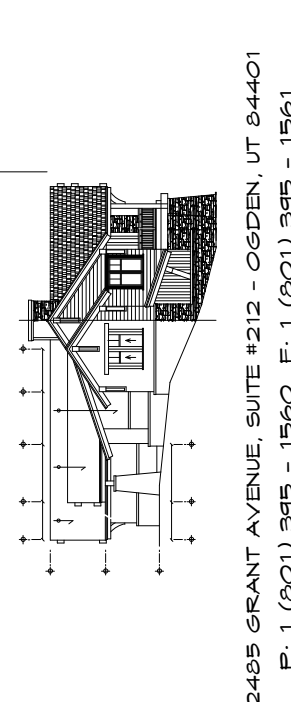
LUNDIN HOMES, LLC



2485 GRANT AVENUE, SUITE #212 - OGDEN, UT 84401  
P: 1 (801) 348 - 1960 F: 1 (801) 348 - 1961

GENERAL CONTRACTOR

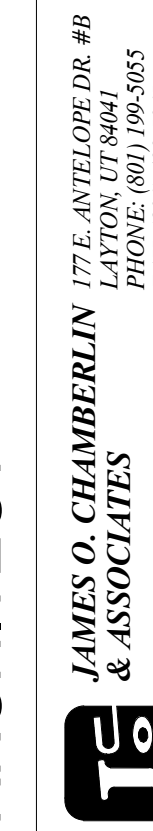
LUNDIN DESIGN GROUP



2485 GRANT AVENUE, SUITE #212 - OGDEN, UT 84401  
P: 1 (801) 348 - 1960 F: 1 (801) 348 - 1961

DESIGN

ARCHITECT



JAMES O. CHAMBERLIN  
& ASSOCIATES  
ARCHITECTS

The Ogden Valley  
Community Church

Huntsville, UT

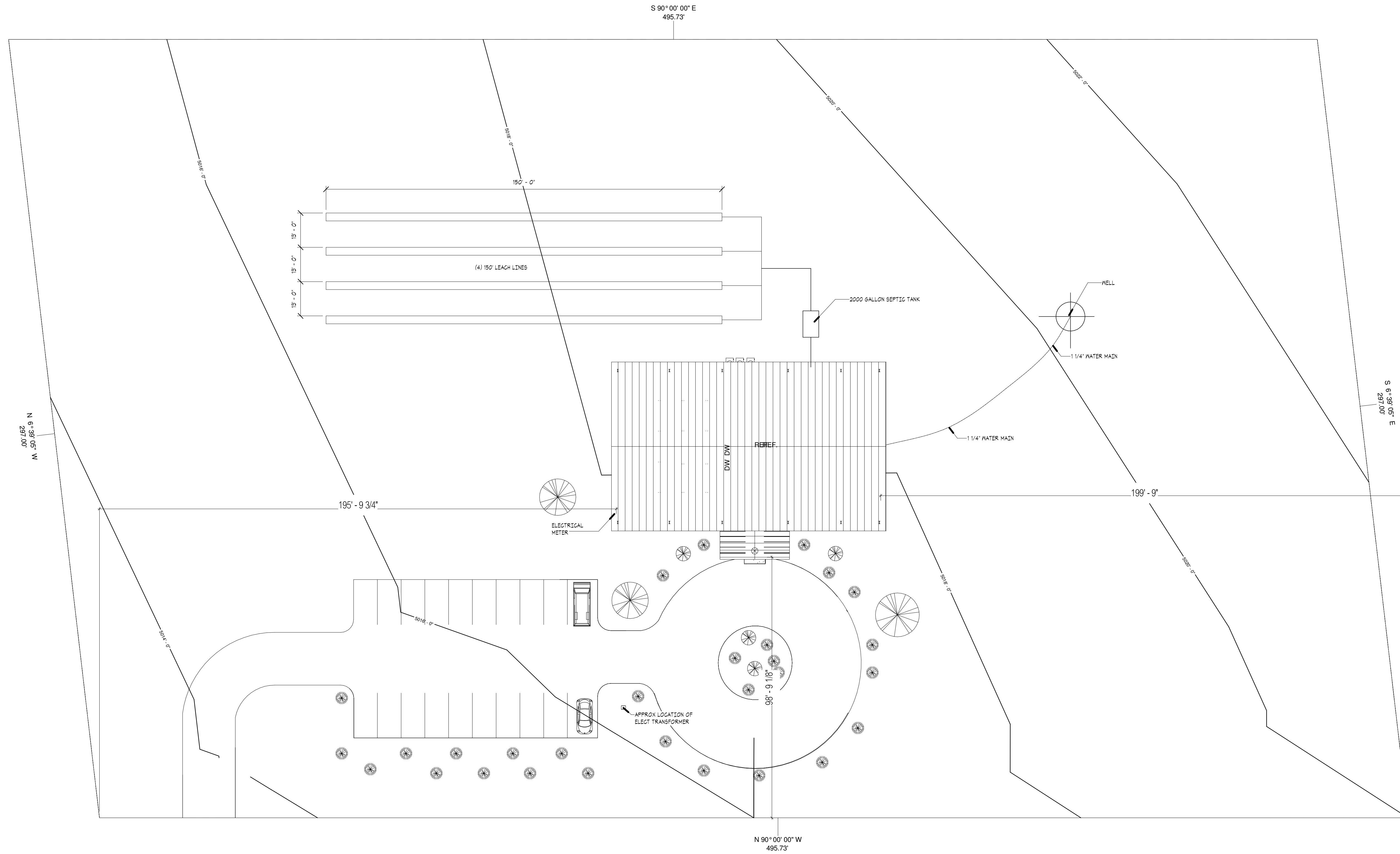
Building Sections

Project number 2014-06  
Date 10/20/2014  
Drawn by Karl Lundin  
Checked by Checker

A9

Scale 3/16" = 1'-0"





1 Site Plan  
1" = 20'-0"

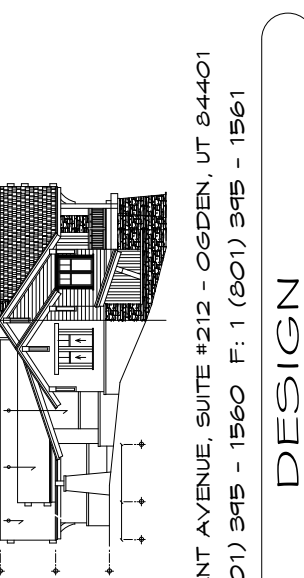
LUNDIN HOMES, LLC



2495 GRANT AVENUE, SUITE #212 - OGDEN, UT 84401  
P: 1 (801) 348 - 1960 F: 1 (801) 348 - 1961

GENERAL CONTRACTOR

LUNDIN DESIGN GROUP



2495 GRANT AVENUE, SUITE #212 - OGDEN, UT 84401  
P: 1 (801) 348 - 1960 F: 1 (801) 348 - 1961

DESIGN

ARCHITECT



JAMES O. CHAMBERLIN  
& ASSOCIATES  
ARCHITECTS

The Ogden Valley  
Community Church

Huntsville, UT

Site Plan

Project number	2014-06
Date	10/20/2014
Drawn by	Author
Checked by	Checker

C1

Scale 1" = 20'-0"