

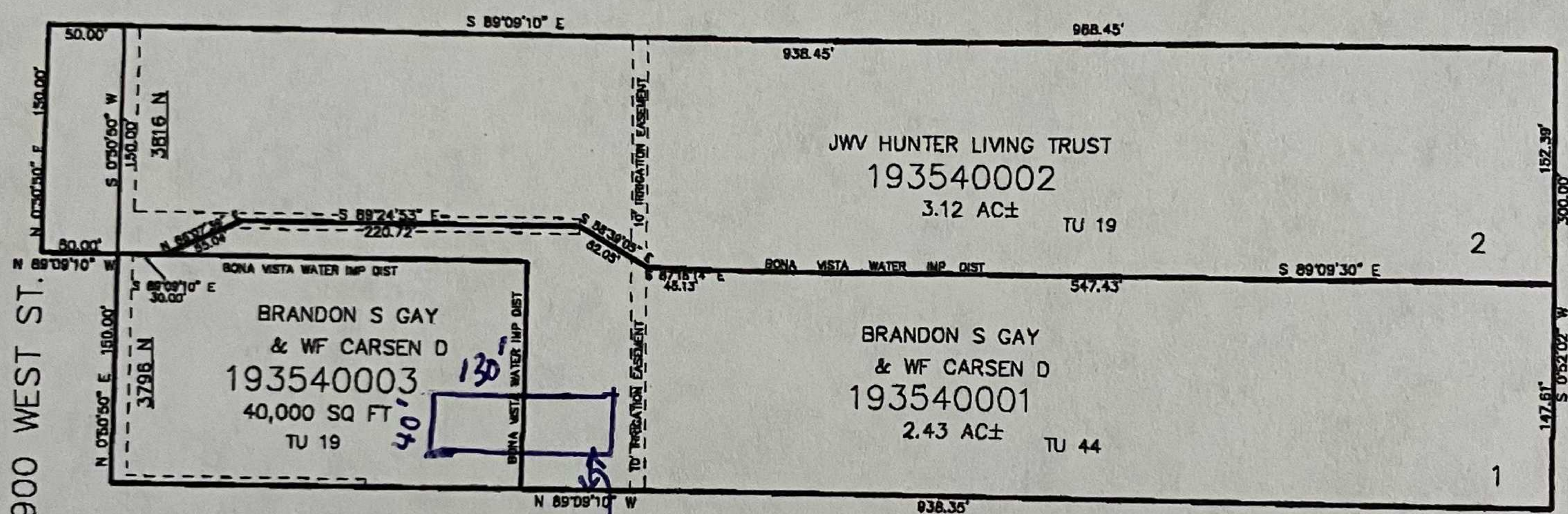
## FALLING LEAF

IN WEBER COUNTY

SCALE 1" = 80'

TAXING UNIT: 44, 19

SEE PAGE 9



10' UTILITY & DRAINAGE EASEMENTS EACH SIDE OF PROPERTY LINES AS INDICATED BY DASHED LINES EXCEPT AS OTHERWISE SHOWN.

FOR COMPLETE ENG DATA SEE ORIGINAL DEDICATION PLAT IN BOOK 79, PAGE 74 OF RECORDS.