

DOG NEW  
SHELL BUILDING  
4930 EAST 2550 NORTH  
EDEN, UTAH

RIDGELINE DESIGN ARCHITECTS  
1708 EAST 5550 SOUTH #20  
SOUTH OGDEN, UT 84403  
PHONE: 801-392-6882 FAX: 801-621-1494  
www.ridgeline-design.com

Original drawings remain the property of Ridgeline Design Architects and as such Ridgeline Design Architects retains total ownership and control. The design represented by these drawings is sold to the client for a one time use, unless otherwise agreed upon in writing by Ridgeline Design Architects.



Stamp:

Date:

2/2/2015

Task/drawings:

DOG NEW  
BUILDING SHELL

4930 EAST 2550 NORTH  
EDEN, UTAH

Project Number:

1505

Sheet Title:

COVER SHEET

Sheet:

C-0a

CODE SUMMARY

INDEX

OCCUPANCY TYPE: B/S--1  
CONSTRUCTION TYPE: V B  
MAXIMUM NO. STORIES 2  
MAXIMUM HEIGHT 40 FT  
ALLOWABLE AREA 9,000 SQ FT  
SPRINKLERED NO  
YARD INCREASE YES ALLOWABLE INCREASE .75  
MAX ALLOWABLE AREA 9,000 SQ FT X .75 = 6,750  
9,000 + 6750 = 15750 SQ FT

STRUCTURAL FRAME 0  
BEARING WALL EXTERIOR 0  
INTERIOR 0  
NONBEARING WALL 0  
FLOOR /CEILING 0  
ROOF/CEILING 0

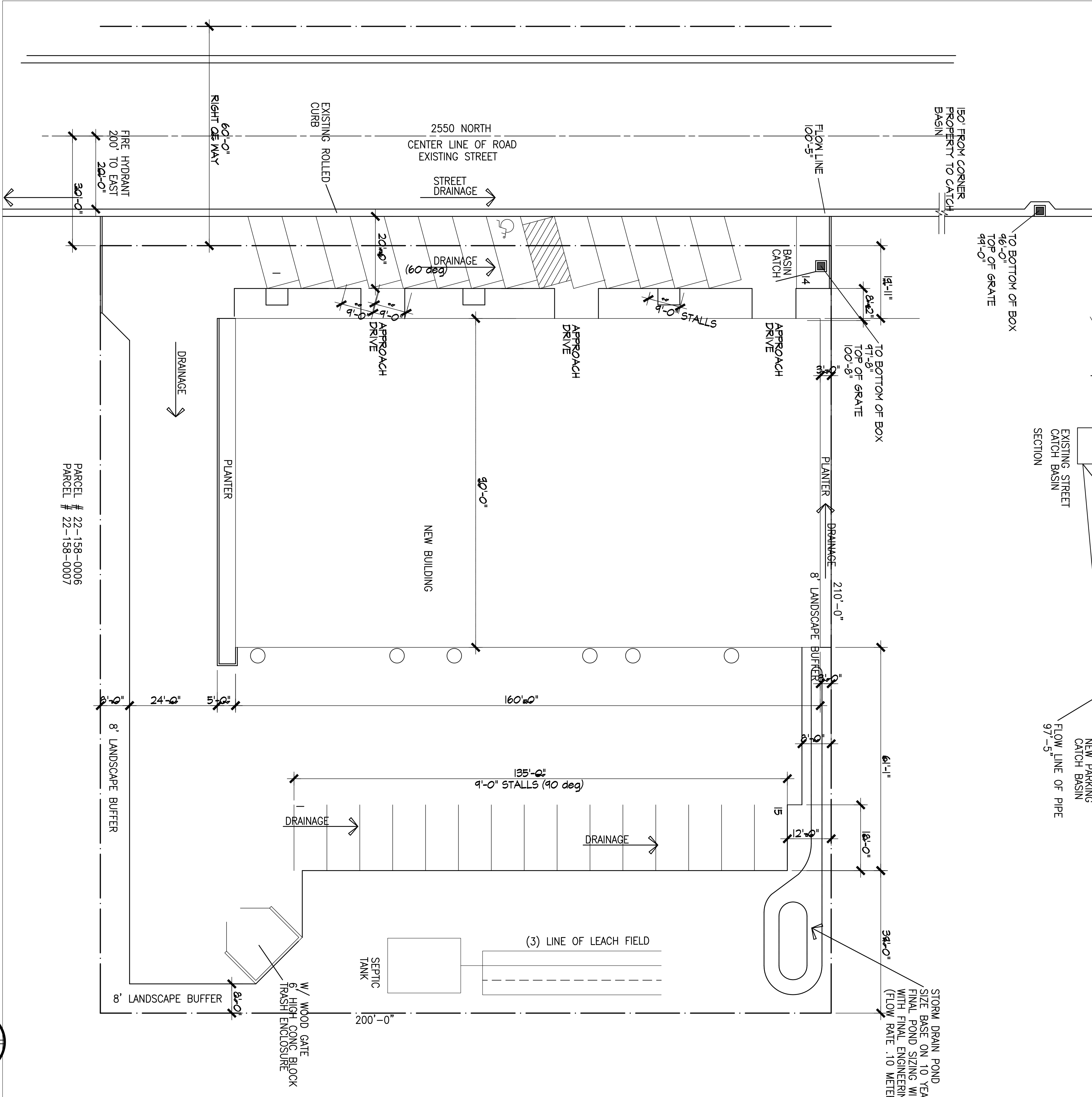
BUILDING SUMMARY

NO. STORIES 1 STORY  
MAXIMUM HEIGHT 35'-0" REQUIRED  
MAXIMUM HEIGHT 26'-0" PROVIDED  
FLOOR PLAN AREA 14,580 SQ FT  
TOTAL SITE AREA 200' X 210' 42,000 SQ FT REQUIRED  
LANDSCAPE AREA 20% 8,400 SQ FT REQUIRED  
LANDSCAPE AREA 8,891 SQ FT PROVIDED  
PARKING 24 REQUIRED 2 CLIENTS  
29 PROVIDED 2 EMPLOYEES

SNOW LOAD 30#/SQ FT  
WIND LOAD 90#/SQ FT

APPLICABLE CODE

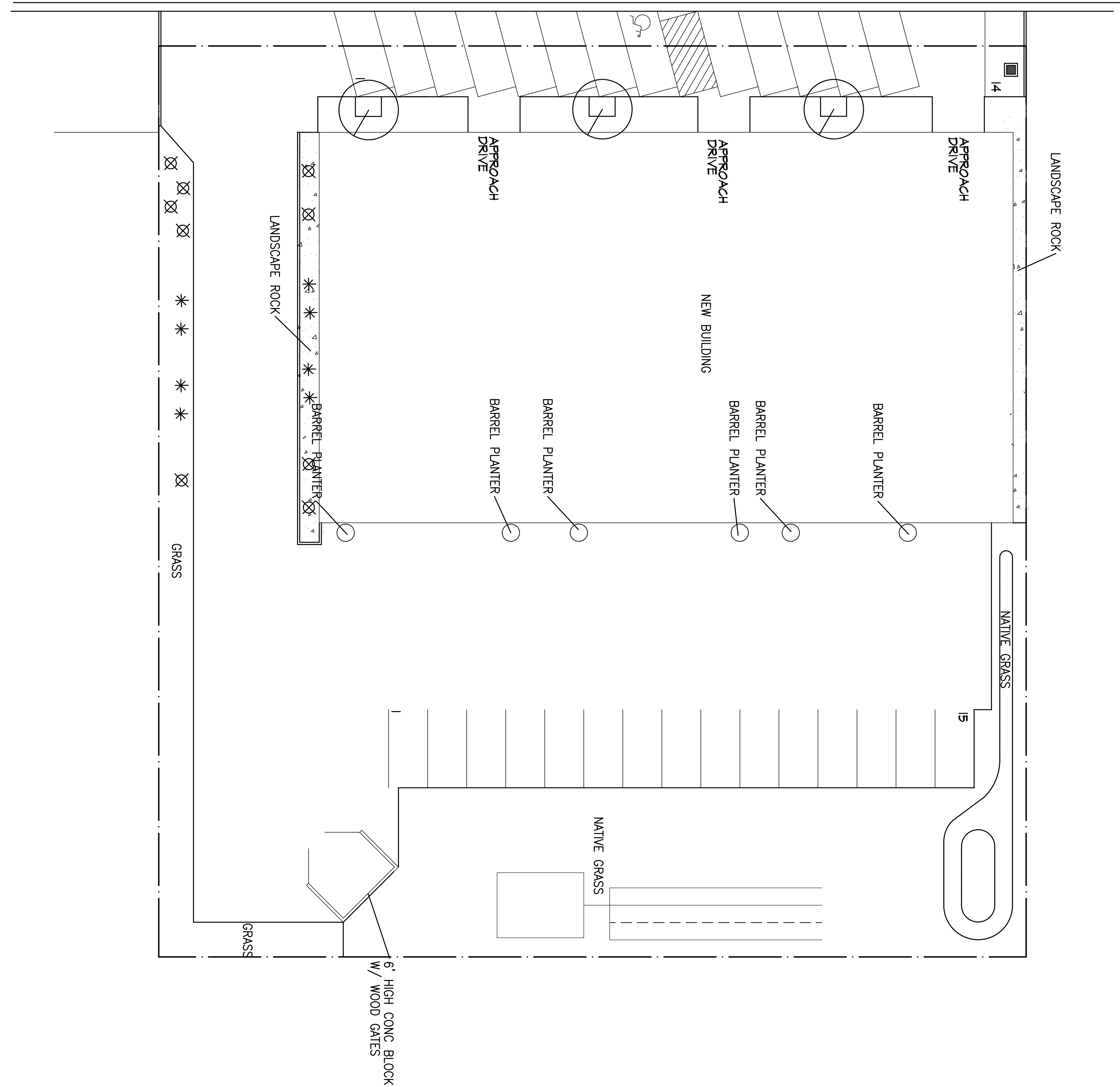
2012 INTERNATIONAL BUILDING CODE  
2012 INTERNATIONAL PLUMBING CODE  
2012 INTERNATIONAL MECHANICAL CODE  
2012 INTERNATIONAL FUEL GAS CODE  
2011 NATIONAL ELECTRICAL CODE  
2012 INTERNATIONAL FIRE CODE  
2012 INTERNATIONAL ENERGY CONSERVATION CODE  
1997 UNIFORM CODE FOR BUILDING CONSERVATION



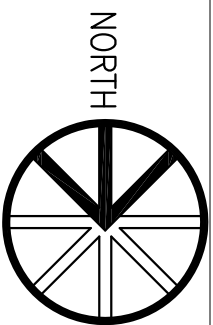
SITE PLAN

SCALE 1"=10'-0"

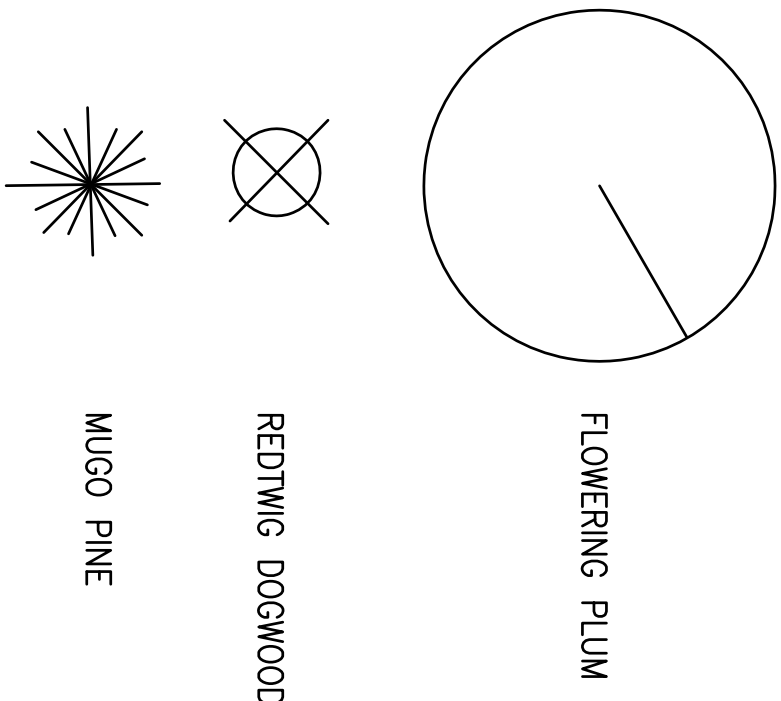
NORTH



SITE PLAN  
SCALE 1"=10'-0"



#### PLANTING LEGEND



SITE AREA = 42,000 SQ. FT.  
LANDSCAPING PERCENTAGE (20%)  
LANDSCAPE AREA 8,891 SQ. FT.  
8,891 / 42,000 = 21.1%

GRASS AREA 1,776 / 8,891 = 19.9%  
NATIVE GRASS AREA 6,563 / 8,891 = 71.2%  
PLANTING AREA 795 / 8,891 = 8.9 %

**RIDGELINE DESIGN ARCHITECTS**  
1708 EAST 5550 SOUTH #20  
SOUTH OGDEN, UT 84403  
PHONE: 801-392-6882 FAX: 801-621-1494  
www.ridgeline-design.com

Original drawings remain the property of Ridgeline Design Architects and as such Ridgeline Design Architects retains total ownership and control. The design represented by these drawings is sold to the client for a one time use, unless otherwise agreed upon in writing by Ridgeline Design Architects.



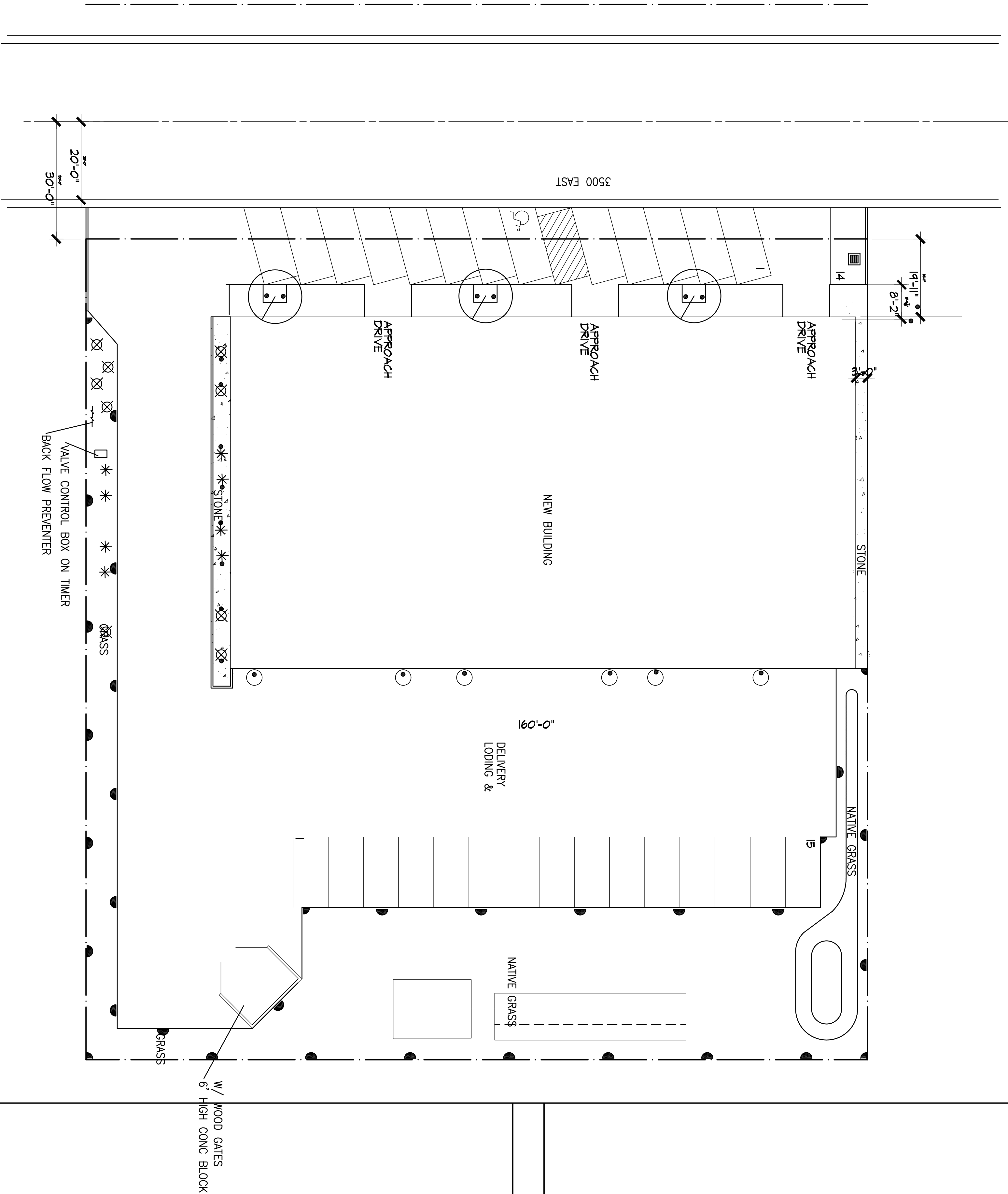
Stamp:

Date:  
2/2/2015  
Task/Drawings:

**DOG NEW  
BUILDING SHELL**  
4930 EAST 2550 NORTH  
EDEN, UTAH

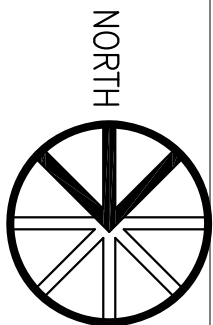
Sheet Title:  
Project Number:  
1505  
LANDSCAPE  
PLAN

Sheet:  
**L-1a**



SITE PLAN

SCALE 1"=10'-0"



SPRINKLER LEGEND

- DRIP HEAD
- ◐ SPRAY HEAD
- BACK FLOW PREVENTER

RIDGELINE DESIGN ARCHITECTS

1708 EAST 5550 SOUTH #20  
SOUTH OGDEN, UT 84403  
PHONE: 801-392-6882 FAX: 801-621-1494  
www.ridgeline-design.com

Original drawings remain the property of Ridgeline Design Architects and as such Ridgeline Design Architects retains total ownership and control. The design represented by these drawings is sold to the client for a one time use, unless otherwise agreed upon in writing by Ridgeline Design Architects.



Stamp:

Date:  
2/2/2015

Revisions:

DOG NEW  
BUILDING SHELL

4930 EAST 2550 NORTH  
EDEN, UTAH

Project Number:  
1444

Sheet Title:  
LANDSCAPE  
IRRIGATION  
PLAN

Sheet:

L-2a