

Project Narrative/Notes/Revisions

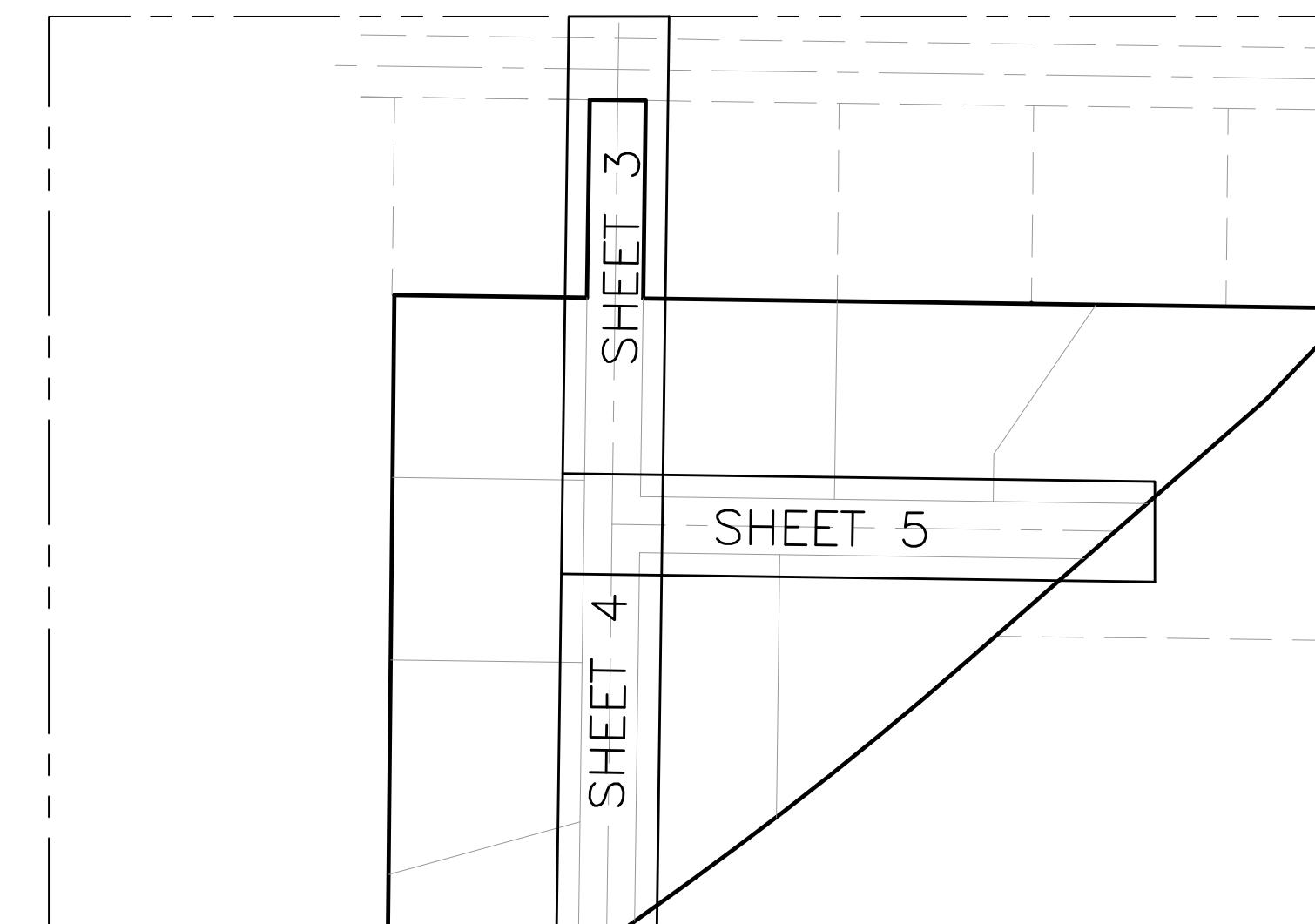
- 1) 6/19/14 RH - COMPLETED DESIGN FOR CLIENT & COUNTY REVIEW.
- 2) 9/3/14 RH - REVISED DESIGN FOR CLIENT CHANGES.
- 3) 1/12/15 RH - REVISED DESIGN PER COUNTY COMMENTS.
- 4) 1/20/15 RH - REVISED DESIGN PER COUNTY COMMENTS.
- 5) 2/11/15 RH - REVISED DESIGN PER CLIENT CHANGES.
- 6) 3/17/15 TP - REVISED DESIGN PER COUNTY COMMENTS
- 7) 3/27/15 TP - REVISED DESIGN PER COUNTY COMMENTS
- 8) 6/25/15 RH - REVISED DESIGN PER COUNTY COMMENTS
- 9) 7/7/15 ST - REVISED DESIGN PER COUNTY COMMENTS
- 10) 7/22/15 RH - REVISED DESIGN PER COUNTY COMMENTS
- 11) 8/11/15 ST - HIC COMMENTS
- 12) 9/17/15 RH - REVISED PLANS PER COUNTY COMMENTS
- 13) 11/12/15 RH - REVISED PLANS PER COUNTY COMMENTS
- 14) 11/25/15 RH - REVISED PLANS PER COUNTY COMMENTS

BLUE ACRES SUBDIVISION Phase-4 Improvement Plans

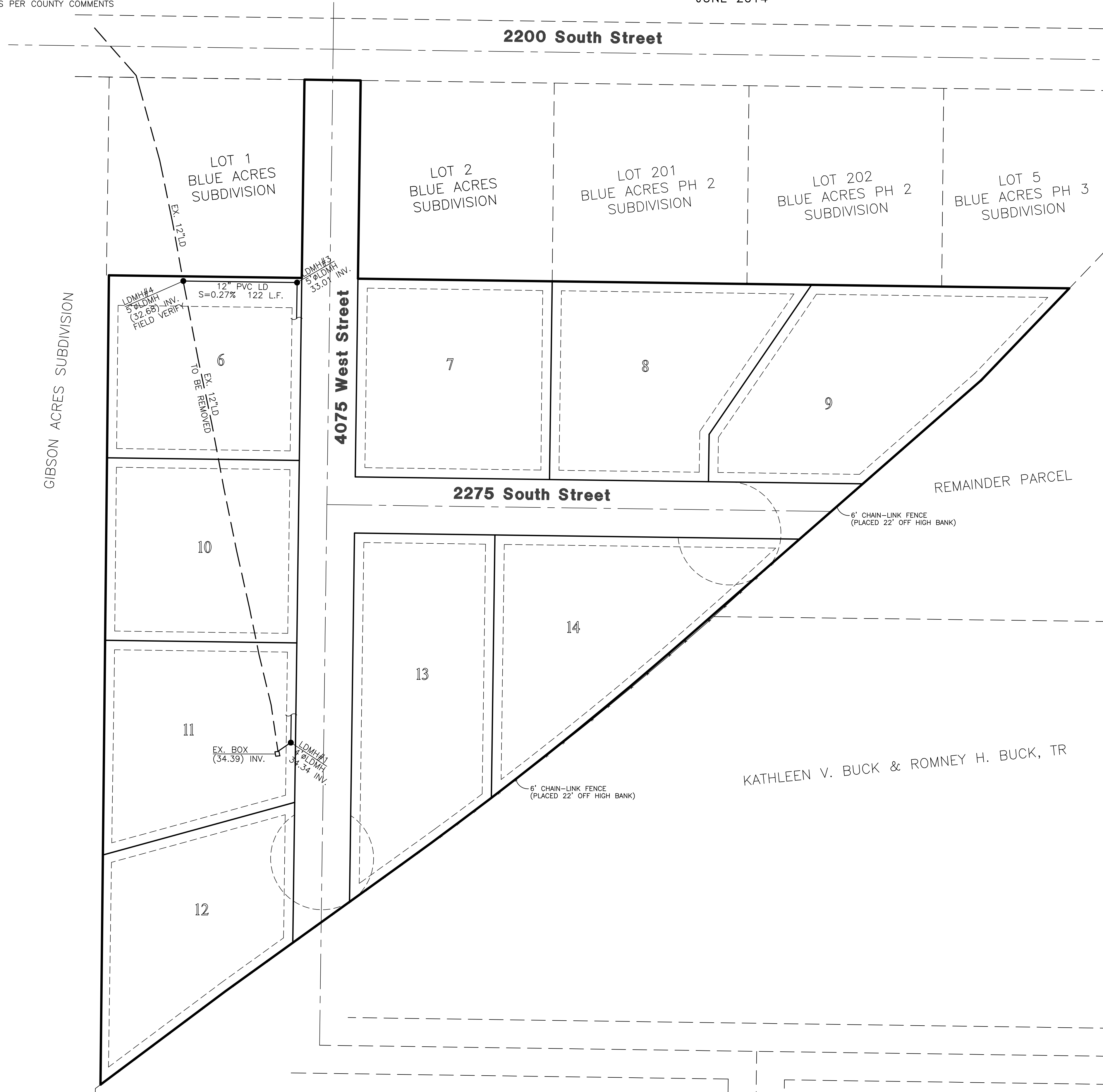
WEBER COUNTY, UTAH
JUNE 2014



Vicinity Map
NOT TO SCALE

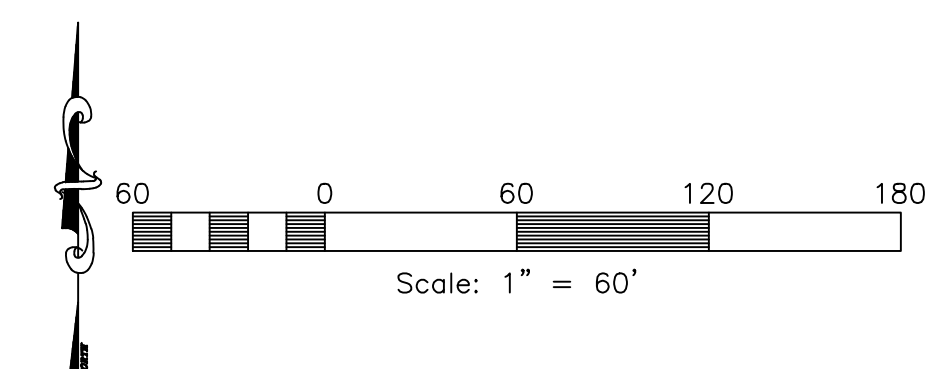


Sheet Index Key Map
NOT TO SCALE



Sheet Index

- Sheet 1 - Cover/Index Sheet
- Sheet 2 - Notes/Legend/Street Cross-Section
- Sheet 3 - 4075 West St. 19+00.00 - 23+50.00
- Sheet 4 - 4075 West St. 14+00.00 - 19+00.00
- Sheet 5 - 2275 South St. 10+00.00 - 16+00.00
- Sheet 6 - Detention Basin
- Sheet 7 - Storm Water Pollution Prevention Plan Exhibit
- Sheet 8 - Storm Water Pollution Prevention Plan Details



KATHLEEN V. BUCK & ROMNEY H. BUCK, TR

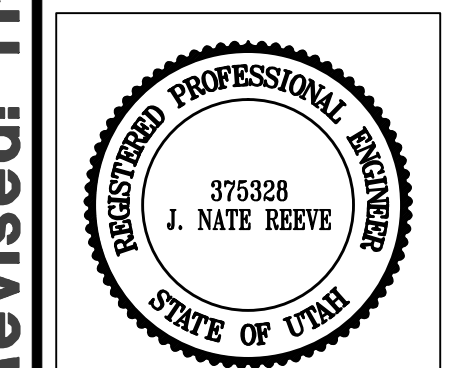
Reeve & Associates, Inc.

 920 CHAMBERS STREET SUITE 14, OGDEN, UTAH 84403
 TEL: (801) 540-7330 FAX: (801) 540-7336 www.reeve-assoc.com
 LAND PLANNERS • CIVIL ENGINEERS • LAND SURVEYORS
 TRAFFIC ENGINEERS • STRUCTURAL ENGINEERS • LANDSCAPE ARCHITECTS

DATE	DESCRIPTION
3-17-15	TP - County Comments
3-27-15	TP - County Comments
6-25-15	RH - County Comments
7-27-15	RH - County Comments
9-17-15	RH - County Comments
11-12-15	RH - County Comments
11-25-15	RH - County Comments

**Blue Acres Subdivision
Phase-4**
WEBER COUNTY, UTAH

Cover/Index Sheet



Project Info.

Engineer:	J. NATE REEVE, P.E.
Drafter:	R. HANSEN
Begin Date:	JUNE 10, 2014
Name:	BLUE ACRES SUBDIVISION PHASE-4
Number:	5036-01

Sheet	8
1	Sheets

Engineer's Notice To Contractors
 THE EXISTENCE AND LOCATION OF ANY UNDERGROUND UTILITY PIPES OR STRUCTURES SHOWN ON THESE PLANS WERE OBTAINED FROM AVAILABLE INFORMATION PROVIDED BY OTHERS. THE LOCATIONS SHOWN ARE APPROXIMATE AND SHALL BE CONFIRMED IN THE FIELD BY THE CONTRACTOR, SO THAT ANY NECESSARY ADJUSTMENT CAN BE MADE IN ALIGNMENT AND/OR GRADE OF THE PROPOSED IMPROVEMENT. THE CONTRACTOR IS REQUIRED TO CONTACT THE UTILITY COMPANIES AND TAKE DUE PRECAUTIONARY MEASURE TO PROTECT ANY UTILITY LINES SHOWN, AND ANY OTHER LINES OBTAINED BY THE CONTRACTOR'S RESEARCH, AND OTHERS NOT OF RECORD OR NOT SHOWN ON THESE PLANS.

Developer Contact:
 Romney Buck
 4115 West 2550 South
 Ogden, UT, 84404
 PH: (801) 540-7235

Blue Stakes Location Center
Call: Toll Free
1-800-662-4111
 Two Working Days Before You Dig