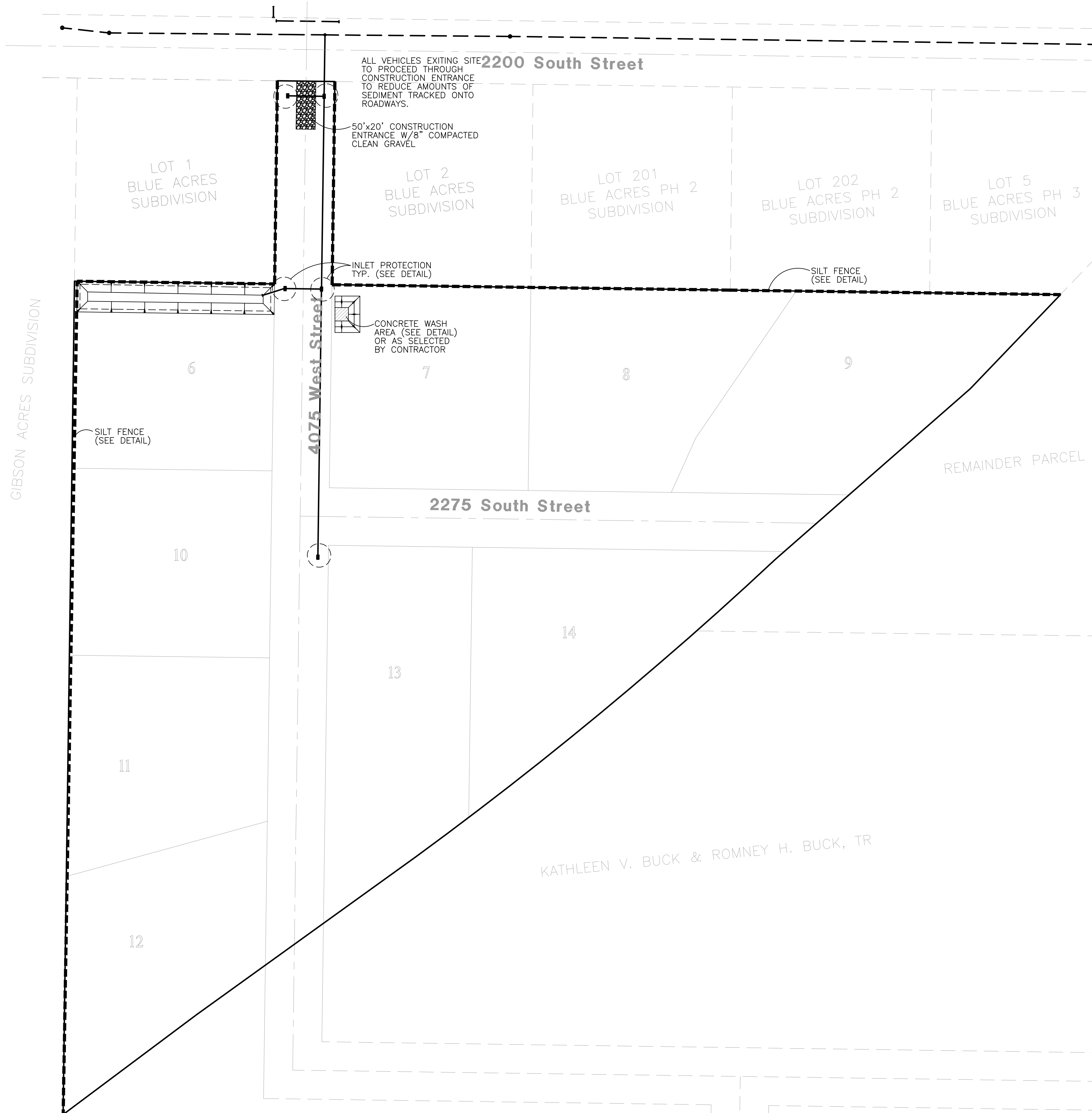


BLUE ACRES SUBDIVISION Phase-4

Storm Water Pollution Prevention Plan Exhibit

WEBER COUNTY, UTAH
JUNE 2014

STREETS TO BE SWEEPED WITHIN
1000 FEET OF CONSTRUCTION
ENTRANCE DAILY IF NECESSARY



Vicinity Map
NOT TO SCALE

Reeve & Associates, Inc. - Solutions You Can Build On

Reeve & Associates, Inc.
LAND ENGINEERS • CIVIL ENGINEERS • LAND SURVEYORS
PAINT ENGINEERS • STRUCTURAL ENGINEERS • LANDSCAPE ARCHITECTS

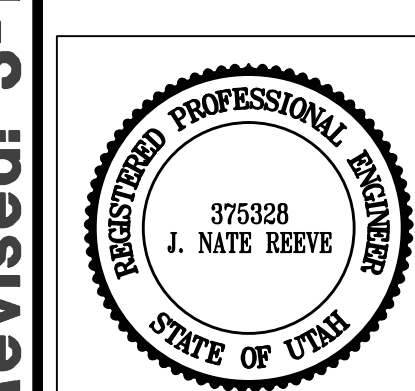
920 CHAMBERS STREET, SUITE 14, OGDEN, UTAH 84403
TEL: (801) 621-3100 FAX: (801) 621-2668 WWW.REEVE-ASSOC.COM

DATE	DESCRIPTION
9-3-14	RH - Client Changes
1-12-15	RH - County Comments
1-20-15	RH - County Comments
2-11-15	RH - Client Changes
3-17-15	TP - County Comments

Reeve & Associates, Inc. - Solutions You Can Build On

**Blue Acres Subdivision
Phase-4**
WEBER COUNTY, UTAH

**Storm Water Pollution
Prevention Plan Exhibit**



Project Info.

Engineer: J. NATE REEVE, P.E.

Drafter: R. HANSEN

Begin Date: JUNE 10, 2014

Name: BLUE ACRES SUBDIVISION PHASE-4

Number: 5036-01

Sheet	8
7	Sheets

Construction Activity Schedule

- PROJECT LOCATION.....WEBER COUNTY, UTAH
- PROJECT BEGINNING DATE.....JUNE 2014
- BMP'S DEPLOYMENT DATE.....JUNE 2014
- STORM WATER MANAGEMENT CONTACT / INSPECTOR.....ROMNEY BUCK (801) 540-7235
- SPECIFIC CONSTRUCTION SCHEDULE INCLUDING BMP CONSTRUCTION SCHEDULE TO BE INCLUDED WITH SWPPP BY OWNER/DEVELOPER

