

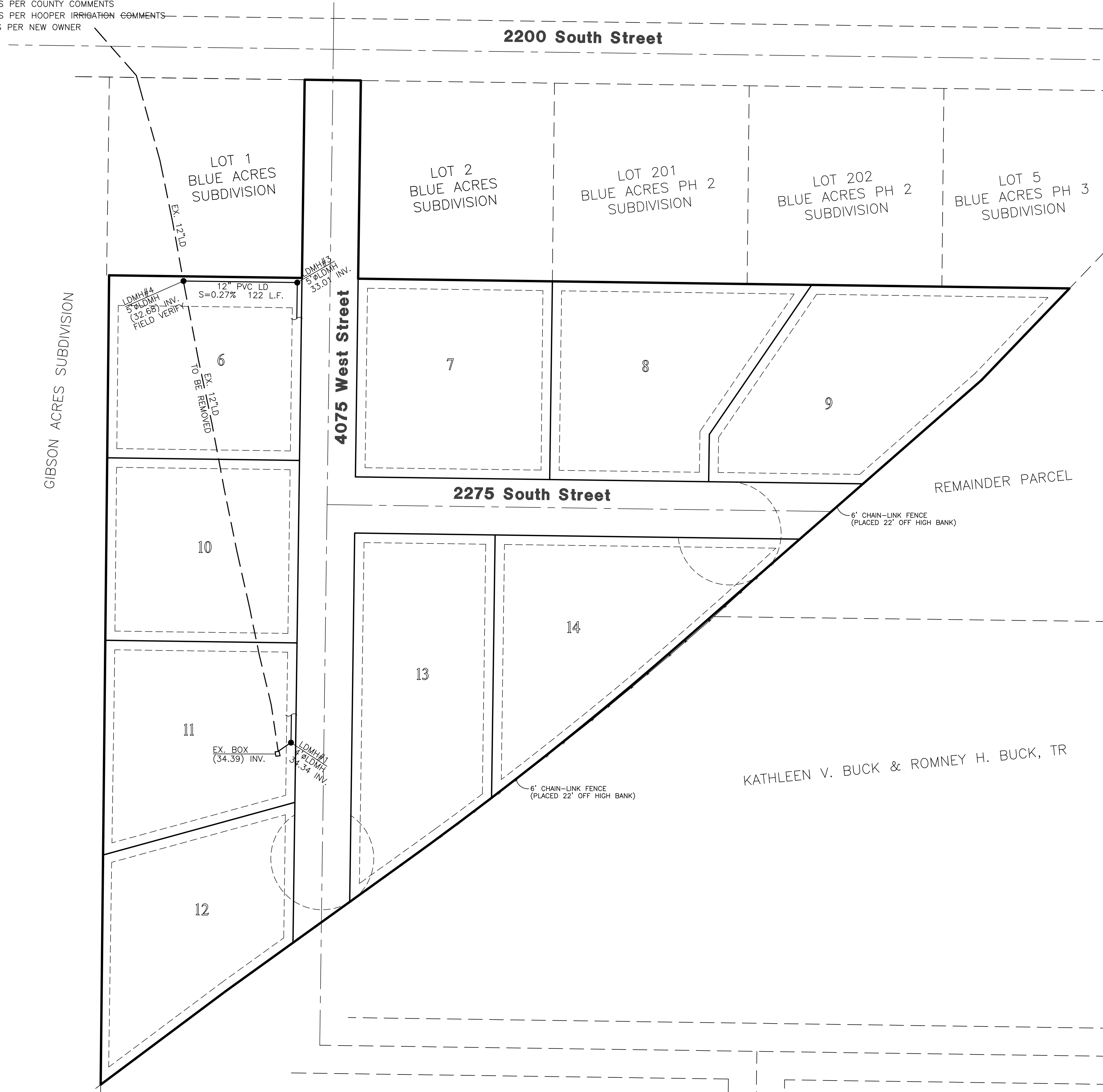
Project Narrative/Notes/Revisions

- 1) 6/19/14 RH - COMPLETED DESIGN FOR CLIENT & COUNTY REVIEW.
- 2) 9/3/14 RH - REVISED DESIGN FOR CLIENT CHANGES.
- 3) 1/12/15 RH - REVISED DESIGN PER COUNTY COMMENTS.
- 4) 1/20/15 RH - REVISED DESIGN PER COUNTY COMMENTS.
- 5) 2/11/15 RH - REVISED DESIGN PER CLIENT CHANGES.
- 6) 3/17/15 TP - REVISED DESIGN PER COUNTY COMMENTS
- 7) 3/27/15 TP - REVISED DESIGN PER COUNTY COMMENTS
- 8) 6/25/15 RH - REVISED DESIGN PER COUNTY COMMENTS
- 9) 7/7/15 ST - REVISED DESIGN PER COUNTY COMMENTS
- 10) 7/22/15 RH - REVISED DESIGN PER COUNTY COMMENTS
- 11) 8/11/15 ST - HIC COMMENTS
- 12) 9/17/15 RH - REVISED PLANS PER COUNTY COMMENTS
- 13) 11/12/15 RH - REVISED PLANS PER COUNTY COMMENTS
- 14) 11/25/15 RH - REVISED PLANS PER COUNTY COMMENTS
- 15) 12/12/16 RH - REVISED PLANS PER HOOPER IRRIGATION COMMENTS
- 16) 1/17/17 RH - UPDATED PLANS PER NEW OWNER

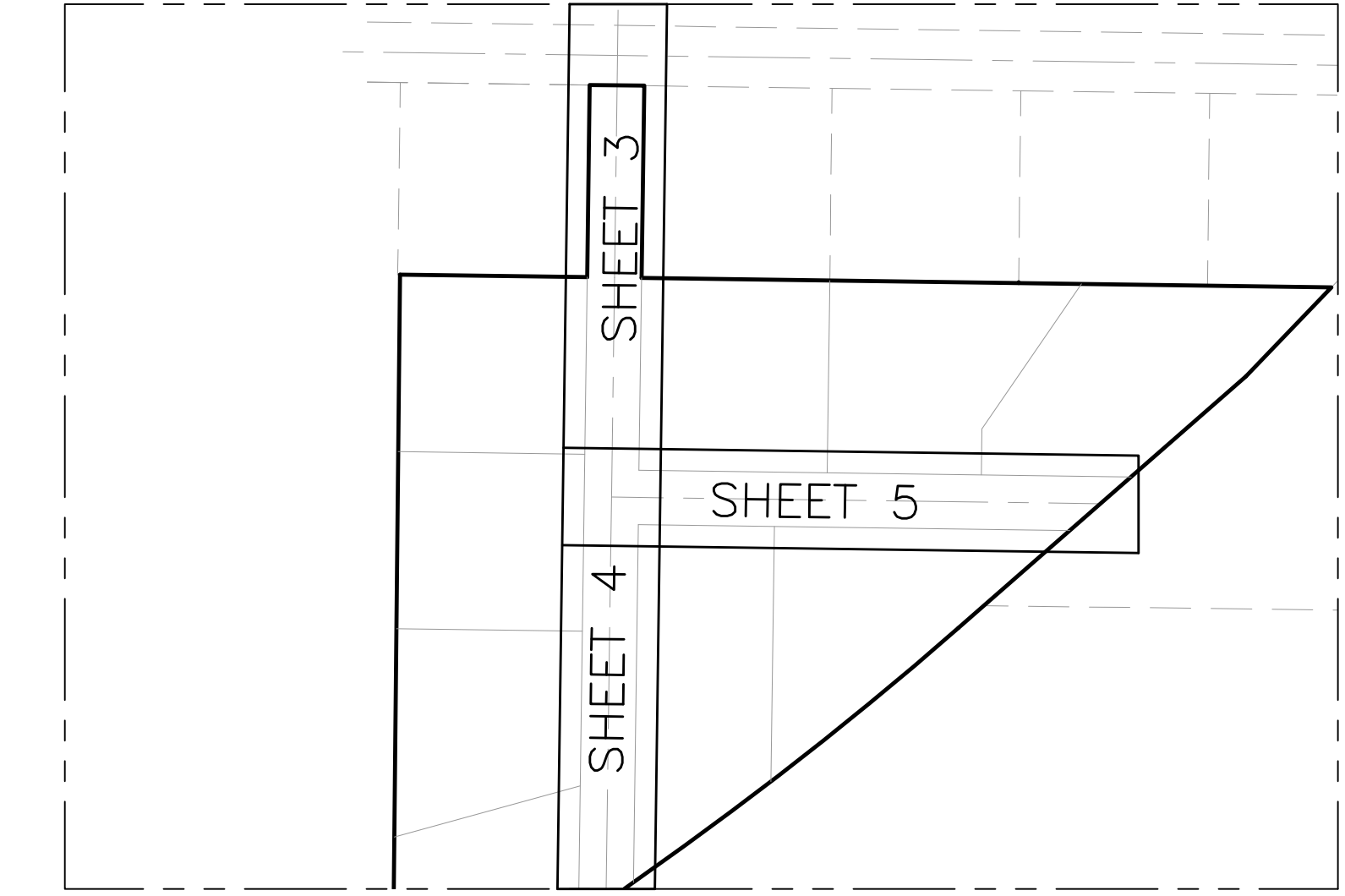
CAMERON CROSSING SUBDIVISION

Improvement Plans

WEBER COUNTY, UTAH
JANUARY 2017



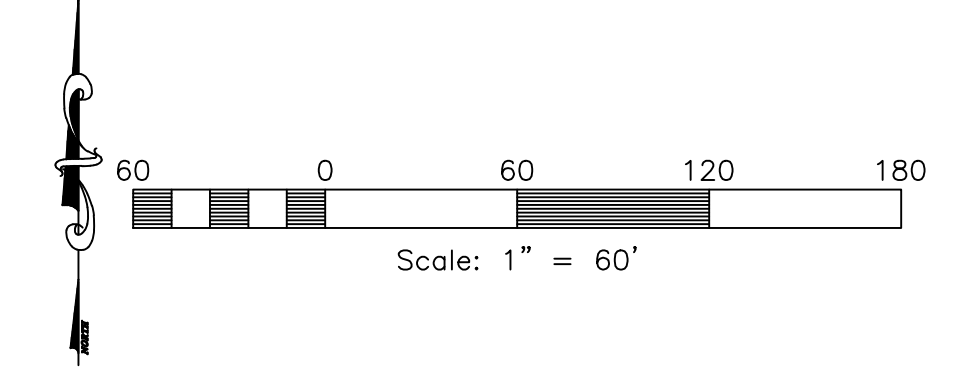
Vicinity Map
NOT TO SCALE



Sheet Index Key Map
NOT TO SCALE

Sheet Index

- Sheet 1 - Cover/Index Sheet
- Sheet 2 - Notes/Legend/Street Cross-Section
- Sheet 3 - 4075 West St. 19+00.00 - 23+50.00
- Sheet 4 - 4075 West St. 14+00.00 - 19+00.00
- Sheet 5 - 2275 South St. 10+00.00 - 16+00.00
- Sheet 6 - Detention Basin
- Sheet 7 - Irrigation Pipe 20+50.00-26+50.00
- Sheet 8 - Irrigation Pipe 26+50.00-32+50.00
- Sheet 9 - Irrigation Pipe 32+50.00-38+50.00
- Sheet 10 - Irrigation Pipe Headwall Detail
- Sheet 11 - Storm Water Pollution Prevention Plan Exhibit
- Sheet 12 - Storm Water Pollution Prevention Plan Details



Reeve & Associates, Inc.
920 CHAMBERS STREET SUITE 14, OGDEN, UTAH 84403
TEL: (801) 921-3100 FAX: (801) 621-8666 www.reeve-assoc.com

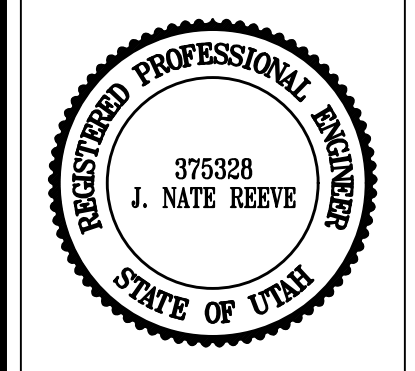
LAND PLANNERS • CIVIL ENGINEERS • LAND SURVEYORS
TRAFFIC ENGINEERS • STRUCTURAL ENGINEERS • LANDSCAPE ARCHITECTS

DATE	DESCRIPTION
6-23-15	RH County Comments
7-22-15	RH County Comments
9-17-15	RH County Comments
11-12-15	RH County Comments
11-25-15	RH County Comments
12-12-16	RH Hooper Irr. Comm.
1-17-17	RH New Owner

Reeve & Associates, Inc. - Solutions You Can Build On

Cameron Crossing Subdivision
WEBER COUNTY, UTAH

Cover/Index Sheet



Project Info.

Engineer: J. NATE REEVE, P.E.
 Drafter: R. HANSEN
 Begin Date: JUNE 10, 2014
 Name: CAMERON CROSSING SUBDIVISION
 Number: 3442-A47

Sheet	12
1	Sheets

Engineer's Notice To Contractors
THE EXISTENCE AND LOCATION OF ANY UNDERGROUND UTILITY PIPES OR STRUCTURES SHOWN ON THESE PLANS WERE OBTAINED FROM AVAILABLE INFORMATION PROVIDED BY OTHERS. THE LOCATIONS SHOWN ARE APPROXIMATE AND SHALL BE CONFIRMED IN THE FIELD BY THE CONTRACTOR, SO THAT ANY NECESSARY ADJUSTMENT CAN BE MADE IN ALIGNMENT AND/OR GRADE OF THE PROPOSED IMPROVEMENT. THE CONTRACTOR IS REQUIRED TO CONTACT THE UTILITY COMPANIES AND TAKE DUE PRECAUTIONARY MEASURE TO PROTECT ANY UTILITY LINES SHOWN, AND ANY OTHER LINES OBTAINED BY THE CONTRACTOR'S RESEARCH, AND OTHERS NOT OF RECORD OR NOT SHOWN ON THESE PLANS.

Developer Contact:
Doug Hamblin
M & D Developers
P.O. Box 625
Roy, Utah, 84067
PH: (801) 725-3782

Blue Stakes Location Center
Call: Toll Free 1-800-662-4111
Two Working Days Before You Dig