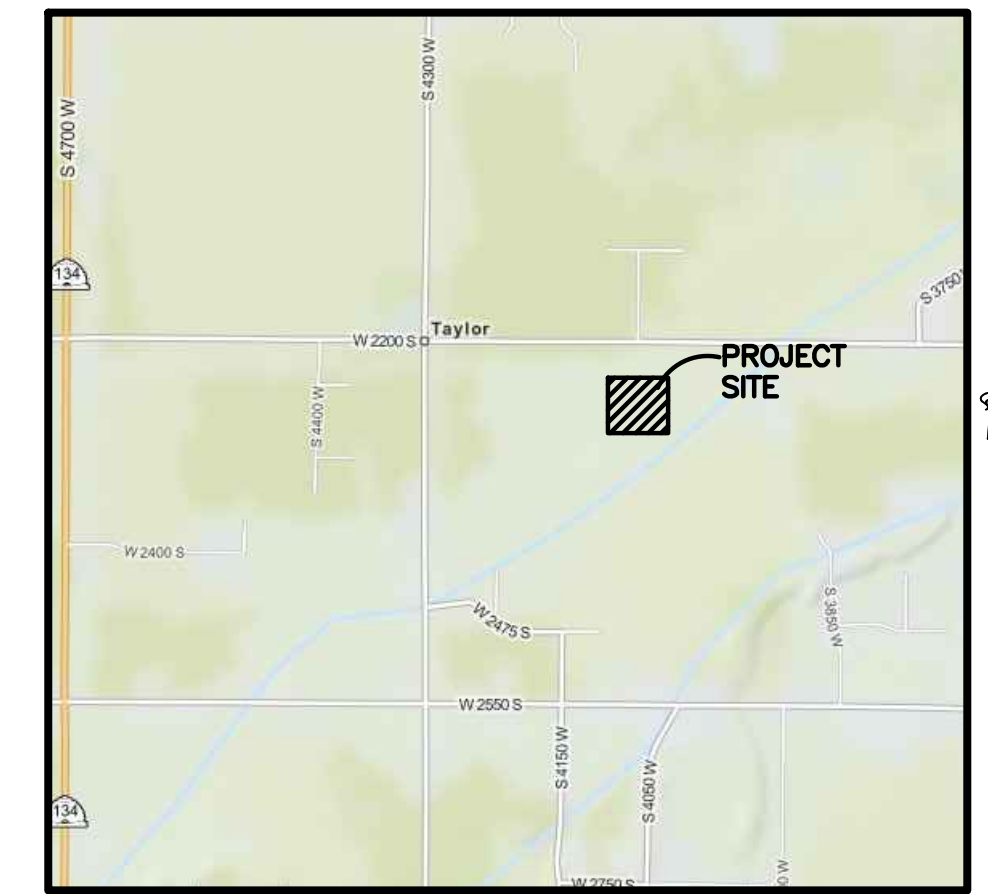
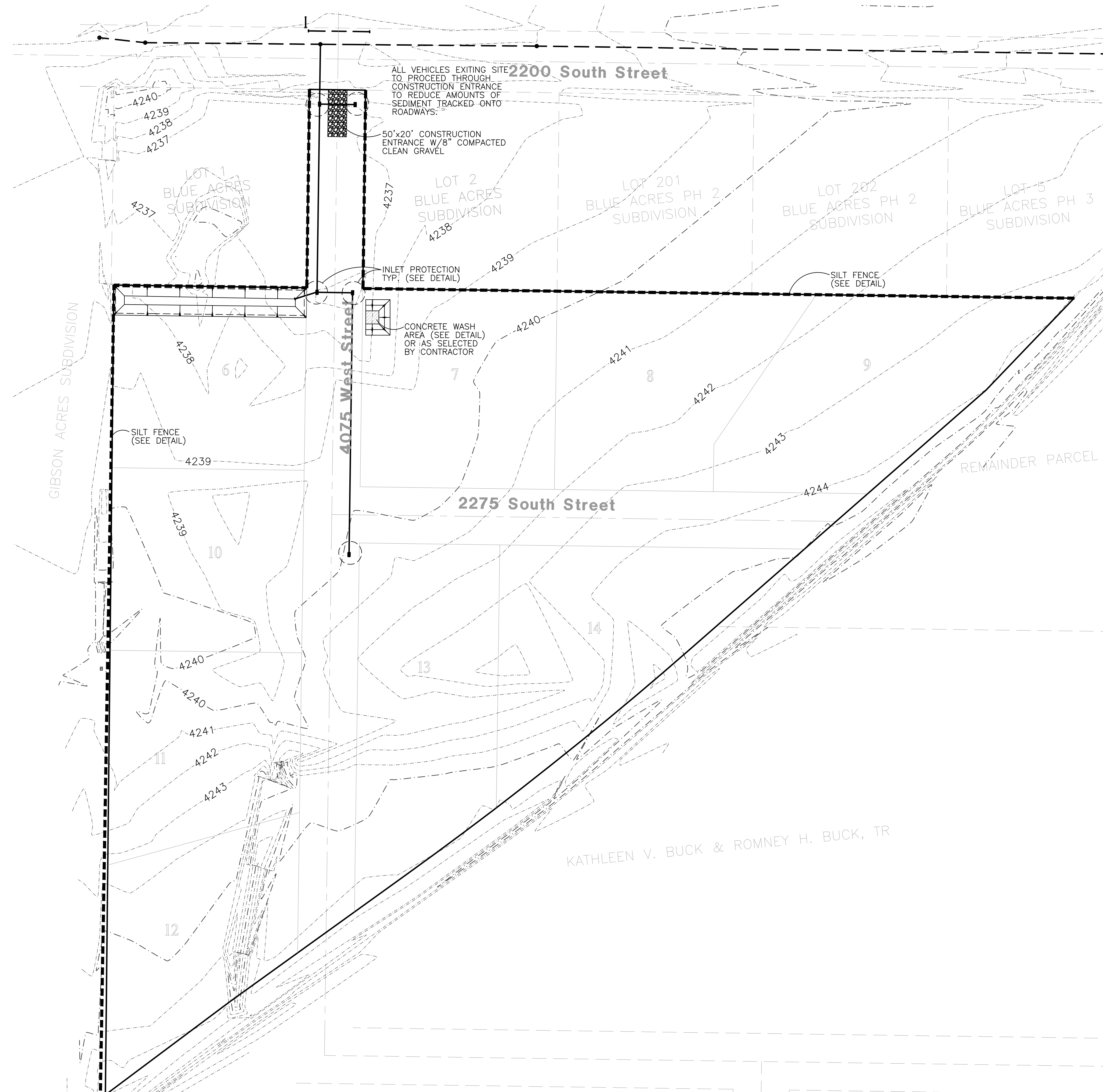


CAMERON CROSSING SUBDIVISION

Storm Water Pollution Prevention Plan Exhibit

WEBER COUNTY, UTAH
JANUARY 2017

STREETS TO BE SWEEPED WITHIN
1000 FEET OF CONSTRUCTION
ENTRANCE DAILY IF NECESSARY



Vicinity Map
NOT TO SCALE

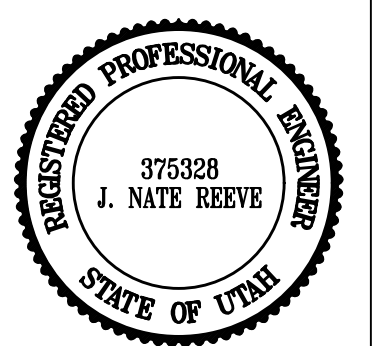
Reeve & Associates, Inc.
920 CHAMBERS STREET, SUITE 14, OGDEN, UTAH 84403
TEL: (801) 621-2100 FAX: (801) 621-2666 WWW.REEVE-ASSOC.COM
LAND ENGINEERS • CIVIL ENGINEERS • LAND SURVEYORS
TRAFFIC ENGINEERS • STRUCTURAL ENGINEERS • LANDSCAPE ARCHITECTS

DATE	DESCRIPTION
6-23-15	RH County Comments
7-22-15	RH County Comments
9-17-15	RH County Comments
11-12-15	RH County Comments
11-25-15	RH County Comments
12-12-16	RH Hooper, Jr. Comment
1-17-17	RH New Owner

Cameron Crossing Subdivision
WEBER COUNTY, UTAH

Storm Water Pollution Prevention Plan Exhibit

Revised: 1-17-17



Project Info.

Engineer: J. NATE REEVE, P.E.
 Drafter: R. HANSEN
 Begin Date: JUNE 10, 2014
 Name: CAMERON CROSSING SUBDIVISION
 Number: 3442-A47

Construction Activity Schedule

- PROJECT LOCATION.....WEBER COUNTY, UTAH
- PROJECT BEGINNING DATE.....JANUARY 2017
- BMP'S DEPLOYMENT DATE.....JANUARY 2017
- STORM WATER MANAGEMENT CONTACT / INSPECTOR.....DOUG HAMBLIN (801) 725-3782
- SPECIFIC CONSTRUCTION SCHEDULE INCLUDING BMP CONSTRUCTION SCHEDULE TO BE INCLUDED WITH SWPPP BY OWNER/DEVELOPER

