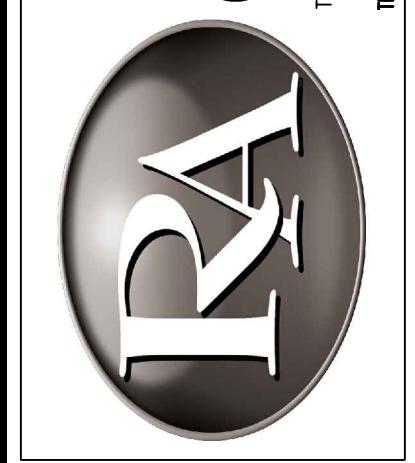


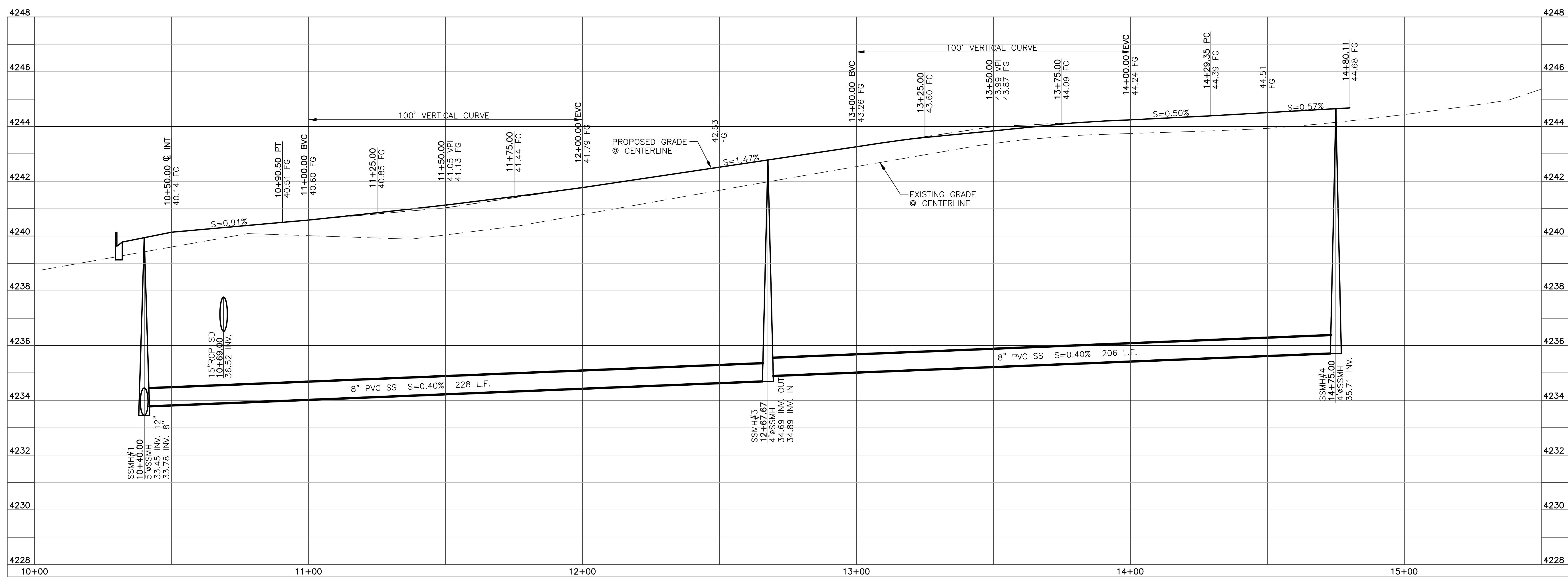
**Construction Notes:**

- 1) ALL CONSTRUCTION IS TO CONFORM TO THE STANDARD DRAWINGS AND SPECIFICATIONS OF WEBER COUNTY.
- CULINARY WATER**
  - W/10 - 10" PVC C-900 CLASS 200 WATER
  - STORM DRAIN**
  - SD/15 - 15" RCP STORM DRAIN
  - SD/15 ARCH - 15" ARCH RCP STORM DRAIN
  - SANITARY SEWER**
  - SS/8 - 8" PVC C-900 SEWER LINE
  - SS/12 - 12" PVC C-900 SEWER LINE
  - SECONDARY WATER**
  - SW/8 - 8" PVC C-900 SECONDARY WATER LINE
  - LAND DRAIN**
  - LD/8 - 8" PERFORATED PVC C-900 LAND DRAIN WRAPPED IN FABRIC

**Reeve & Associates, Inc.**  
 920 CHAMBERS STREET, SUITE 14, OGDEN, UTAH 84403  
 TEL: (801) 621-2100 FAX: (801) 621-2666 www.reeve-assoc.com  
 LAND PLANNERS • CIVIL ENGINEERS • LAND SURVEYORS  
 TRAFFIC ENGINEERS • STRUCTURAL ENGINEERS • LANDSCAPE ARCHITECTS



REVISIONS	DATE	DESCRIPTION
9-3-14	RH	Client Changes
1-12-15	RH	County Comments
1-20-15	RH	County Comments



**Blue Acres Subdivision Phase-4**  
 WEBER COUNTY, UTAH  
**2275 South Street**  
**10+00.00 - 15+50.00**

Revised: 1-20-15



**Project Info.**

Engineer:	J. NATE REEVE, P.E.
Drafter:	R. HANSEN
Begin Date:	JUNE 10, 2014
Name:	BLUE ACRES SUBDIVISION PHASE-4
Number:	5036-01

Blue Stakes Location Center  
**Call: Toll Free 1-800-662-4111**  
 Two Working Days Before You Dig