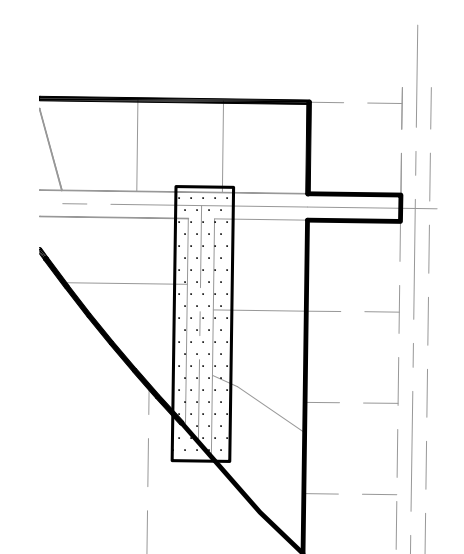


- Construction Notes:**
- ALL CONSTRUCTION IS TO CONFORM TO THE STANDARD DRAWINGS AND SPECIFICATIONS OF WEBER COUNTY.
- CULINARY WATER**  
W/10 - 10" PVC C-900 CLASS 200 WATER STORM DRAIN  
SD/15 - 15" RCP STORM DRAIN  
SD/15 ARCH - 15" ARCH RCP STORM DRAIN
- LAND DRAIN**  
LD/8 - 8" PERFORATED PVC C-900 LAND DRAIN WRAPPED IN FABRIC
- SANITARY SEWER**  
SS/8 - 8" PVC C-900 SEWER LINE  
SS/12 - 12" PVC C-900 SEWER LINE
- SECONDARY WATER**  
SW/8 - 8" PVC C-900 SECONDARY WATER LINE

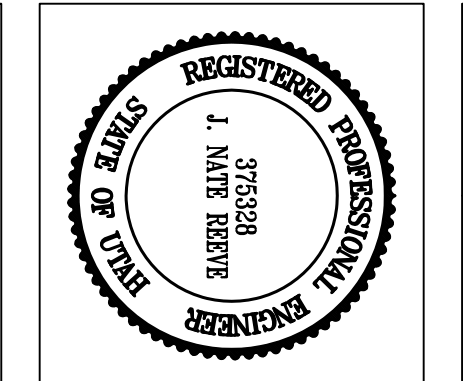


Blue Stakes Location Center  
**Call: Toll Free**  
**1-800-662-4111**  
 Two Working Days Before You Dig

**Revised: 2-11-15**

**Project Info.**

Engineer: J. NATE REEVE, P.E.  
 Order: R. HANSEN  
 Begin Date: JUNE 10, 2014  
 Name: BLUE ACRES SUBDIVISION  
 PHASE-4  
 Number: 5036-01



**Blue Acres Subdivision Phase-4**  
 WEBER COUNTY, UTAH

**2275 South Street**  
**10+00.00 - 15+50.00**

REVISIONS	
DATE	DESCRIPTION
9-3-14 RH	Client Changes
1-12-15 RH	County Comments
1-20-15 RH	County Comments
2-11-15 RH	Client Changes

**Reeve & Associates, Inc.**  
 820 CHAMBERS STREET, SUITE 14, OGDEN, UTAH 84403  
 TEL: (801) 621-3100 FAX: (801) 621-2666 www.reeve-assoc.com  
 LAND PLANNERS • CIVIL ENGINEERS • LAND SURVEYORS  
 TRAFFIC ENGINEERS • STRUCTURAL ENGINEERS • LANDSCAPE ARCHITECTS