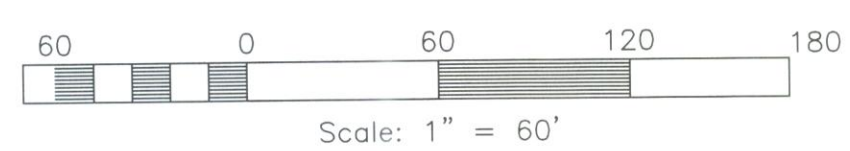


Vicinity Map
Scale: None



Line Table

LINE	BEARING	DISTANCE
L1	N24°18'08"E	62.78'
L2	N39°41'52"W	1.35'
L3	S00°46'46"W	32.09'
L4	N54°14'59"E	37.33'
L5	N54°14'59"E	37.33'

Curve Table

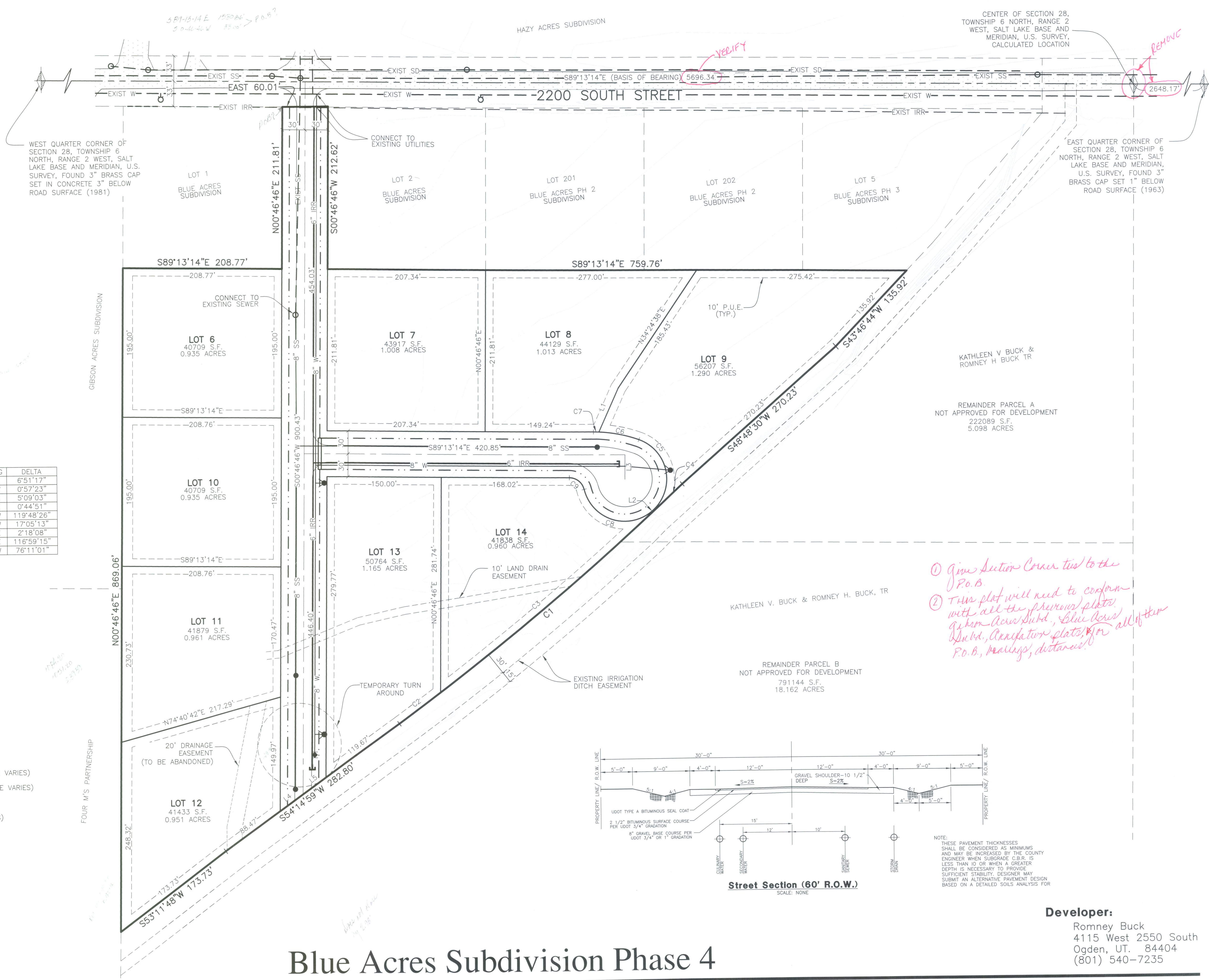
#	RADIUS	ARC LENGTH	CHD LENGTH	TANGENT	CHD BEARING	DELTA
C1	4062.12'	485.98'	485.98'	243.28'	N50°24'08"E	6°51'17"
C2	4062.12'	67.80'	67.80'	33.90'	S53°21'05"W	0°57'23"
C3	4062.12'	365.18'	365.06'	182.71'	N50°17'52"E	5°09'03"
C4	4062.12'	52.99'	52.99'	26.50'	N47°20'55"E	0°44'51"
C5	55.00'	115.01'	95.17'	94.89'	N09°55'41"W	119°48'26"
C6	180.00'	53.68'	53.48'	27.04'	N78°22'30"W	17°05'13"
C7	180.00'	7.23'	7.23'	3.62'	S88°04'10"E	2°18'08"
C8	55.00'	112.30'	93.78'	89.73'	S71°31'50"E	116°59'15"
C9	20.00'	26.59'	24.68'	15.68'	N51°07'44"W	76°11'01"

Legend

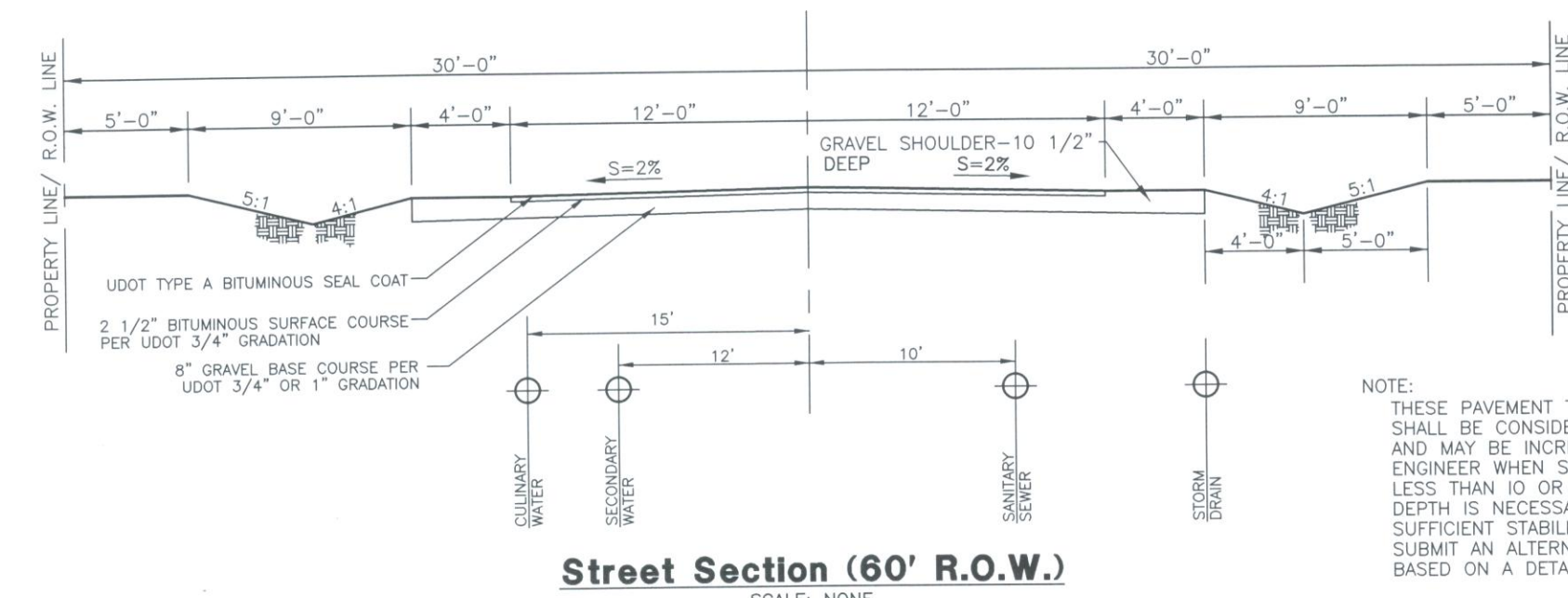
- = SECTION CORNER
- = PUBLIC UTILITY EASEMENT
- = BOUNDARY LINE
- = LOT LINE
- = ADJOINING PROPERTY
- = EASEMENTS
- = SECTION TIE LINE
- = PROPOSED SANITARY SEWER LINE
- = EXISTING SANITARY SEWER LINE
- = PROPOSED IRRIGATION WATER LINE
- = EXISTING IRRIGATION WATER LINE (SIZE VARIES)
- = PROPOSED CULINARY WATER LINE (SIZE VARIES)
- = EXISTING CULINARY WATER LINE
- = PROPOSED STORM DRAIN (SIZE VARIES)
- = EXISTING STORM DRAIN
- = EXISTING FENCE LINE
- = PROPOSED FIRE HYDRANT
- = PROPOSED SANITARY SEWER MANHOLE
- = PLUG W/ 2" BLOW-OFF
- = PLUG & BLOCK
- = EXISTING ASPHALT SURFACE
- = PROPOSED ASPHALT SURFACE

NOTES:
1. CONTOURS ARE SHOWN WITH A ONE FOOT INTERVAL.

THESE PLANS AND SPECIFICATIONS ARE THE PROPERTY OF REEVE & ASSOCIATES, INC., 920 CHAMBERS STREET, SUITE 14, OGDEN, UTAH 84403, AND SHALL NOT BE PHOTOCOPIED, RE-DRAWN, OR USED ON ANY PROJECT OTHER THAN THE PROJECT SPECIFICALLY DESIGNED FOR, WITHOUT THEIR WRITTEN PERMISSION. THE OWNERS AND ENGINEERS OF REEVE & ASSOCIATES, INC. DISCLAIM ANY LIABILITY FOR ANY CHANGES OR MODIFICATIONS MADE TO THESE PLANS OR THE DESIGN THEREON WITHOUT THEIR CONSENT.



*1) Give Section Corner tied to the P.O.B.
2) This plot will need to conform with all the previous plots given above subd., Blue Acres Subd., Ancillary plots, for all of these P.O.B., bearings, distances!*



NOTE:
THESE PAVEMENT THICKNESSES SHALL BE CONSIDERED AS MINIMUMS AND MAY BE INCREASED BY THE COUNTY ENGINEER WHEN SUBGRADE C.B.R. IS LESS THAN 10 OR WHEN A GREATER DEPTH IS NECESSARY TO PROVIDE SUFFICIENT STABILITY. DESIGNER MAY SUBMIT AN ALTERNATIVE PAVEMENT DESIGN BASED ON A DETAILED SOILS ANALYSIS FOR

Blue Acres Subdivision Phase 4

Weber County, Utah

Reeve & Associates, Inc.
300 CHAMBERS STREET, SUITE 14, OGDEN, UTAH 84403
TEL: (801) 821-1000 FAX: (801) 821-2666 www.reeve-associates.com
LAND PLANNERS • CIVIL ENGINEERS • LAND SURVEYORS
RAFTY ENGINEERS • STRUCTURAL ENGINEERS • LANDSCAPE ARCHITECTS

REVISIONS	DESCRIPTION

Blue Acres Subdivision Phase 4
PART OF THE SW 1/4 OF SECTION 28, T.6N., R.2W., S.L.B. & M., U.S. SURVEY
WEBER COUNTY, UTAH

Preliminary Plan

Project Info.
Engineer: N. Reeve
Designer: C. Cave
Begin Date: AUGUST 27, 2014
Name: BLUE ACRES SUBDIVISION PHASE 4
Number: 5036-01

Sheet	1
1	Sheets

Developer:
Romney Buck
4115 West 2550 South
Ogden, UT. 84404
(801) 540-7235