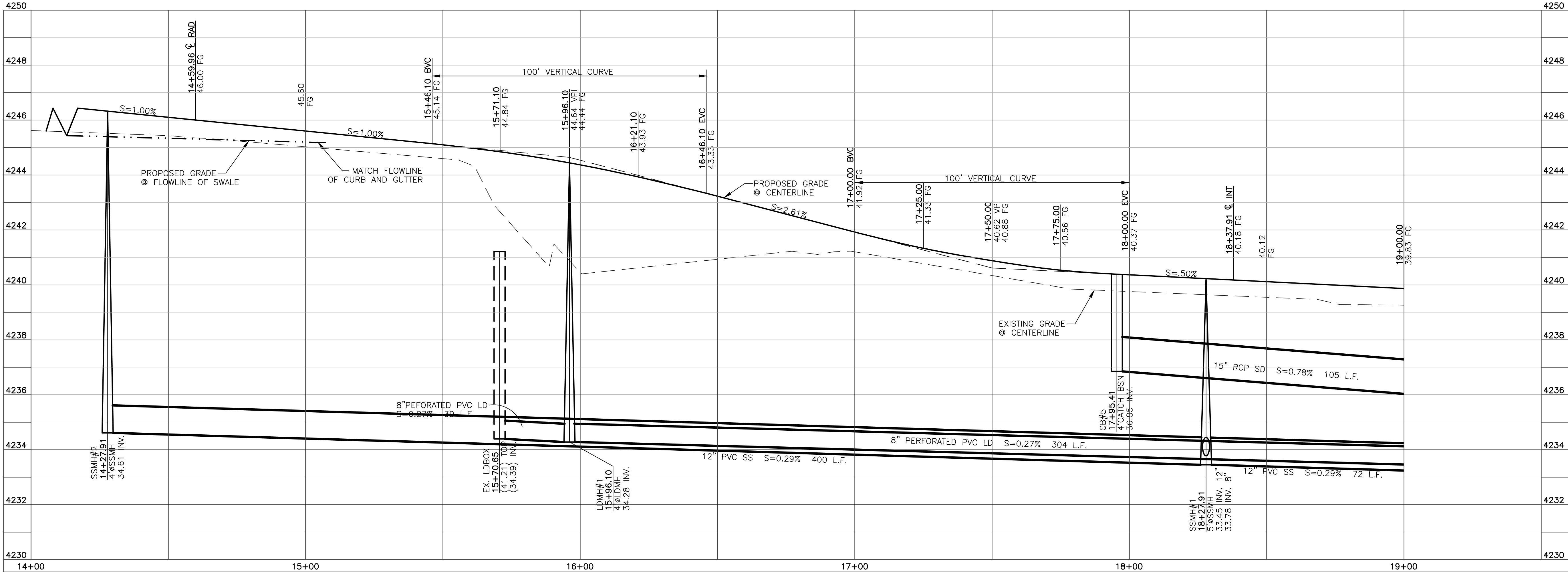
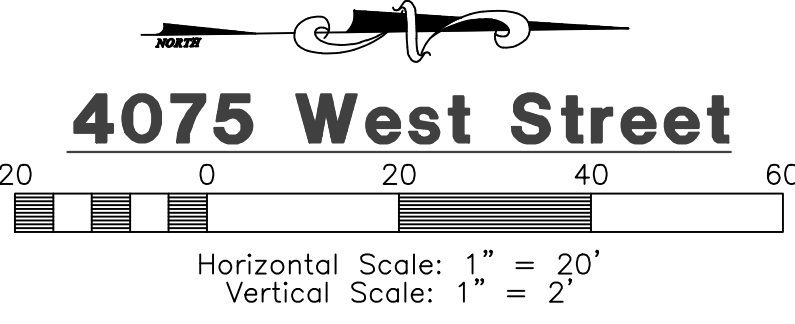


TEMPORARY TURNAROUND TO BE CONSTRUCTED PER WEBER COUNTY PUBLIC WORKS STANDARDS AND SPECIFICATIONS.



Blue Stakes Location Center
Call: Toll Free 1-800-662-4111
 Two Working Days Before You Dig

Construction Notes:

- 1) ALL CONSTRUCTION IS TO CONFORM TO THE STANDARD DRAWINGS AND SPECIFICATIONS OF WEBER COUNTY.
- CULINARY WATER**
 W/10 - 10" PVC C-900 CLASS 200 WATER
- STORM DRAIN**
 SD/15 - 15" RCP STORM DRAIN
 SD/15 ARCH - 15" ARCH RCP STORM DRAIN
- SANITARY SEWER**
 SS/8 - 8" PVC C-900 SEWER LINE
 SS/12 - 12" PVC C-900 SEWER LINE
- SECONDARY WATER**
 SW/8 - 8" PVC C-900 SECONDARY WATER LINE
- LAND DRAIN**
 LD/8 - 8" PERFORATED PVC C-900 LAND DRAIN WRAPPED IN FABRIC

Reeve & Associates, Inc.
 920 CHAMBERS STREET, SUITE 14, OGDEN, UTAH 84403
 TEL: (801) 621-3100 FAX: (801) 621-2666 www.reeve-assoc.com
 LAND PLANNERS • CIVIL ENGINEERS • LAND SURVEYORS
 PUBLIC ENGINEERS • STRUCTURAL ENGINEERS • LANDSCAPE ARCHITECTS

REVISIONS	DATE	DESCRIPTION
9-3-14	RH	Client Changes
1-12-15	RH	County Comments
1-20-15	RH	County Comments
2-11-15	RH	Client Changes
3-17-15	TP	County Comments

Blue Acres Subdivision Phase-4
 WEBER COUNTY, UTAH
4075 West Street
14+00.00 - 19+00.00

Revised: 3-17-15

Project Info.

Engineer:	J. NATE REEVE, P.E.
Drafter:	R. HANSEN
Begin Date:	JUNE 10, 2014
Name:	BLUE ACRES SUBDIVISION PHASE-4
Number:	5036-01