

**DESCRIPTION**

The 982 Bollard features an architectural wedge in a one or two fixture configuration. The fixture(s) provide a direct, glare free symmetrical distribution with either compact fluorescent or incandescent lamp technology.

**SPECIFICATION FEATURES****Material**

Post: 4" Square Aluminum Post (AP) with an aluminum base plate. U Post (U): 8" W x 1 1/2" D aluminum post with an aluminum base plate.

Wood Post (W): 5 1/2" W x 3 1/2" D Select tight-knotted cedar direct burial wood post.

Fixture: One (1) or two (2) 7" H x 8" W x 7" D formed natural bronze housing with either a clear refractive glass lense (INC) or frosted acrylic lense (CFL). Optional clear tempered lense to achieve full cut-off [Sustainable Design]. Aluminum components are used with a painted finish.

**Finish**

Natural bronze or two component polyurethane paint, 2.5 mil nominal thickness for superior protection against fade or wear.

Post Standard: Black (BK), White (WH).

Post Premium: Aluminum Paint (ALP), Grey (GY), Dark Platinum (DP), Graphite Metallic (GRM), Gold Metallic (GM), Bronze Metallic (BM) or Custom Color (CC) or Cedar (W).

The tight-knotted cedar post will naturally weather over time to a dark gray-brown appearance.

Fixture Standard: Natural Bronze (NBZ)[Sustainable Design].

Fixture Premium: Aluminum Paint

(ALP), Black (BK), Grey (GY), White (WH), Dark Platinum (DP), Graphite Metallic (GRM), Gold Metallic (GM), Bronze Metallic (BM), Verdigris (VG) or Custom Color (CC). Note: Bronze will weather to a dark bronze patina.

**Ballast**

One (1) low temperature (0°F, -18°C) AC electronic CFL multi-volt 120/277V (347V-Canada) ballast.

**Lamp/Socket**

One (1) or two (2) 26W quad (GX24q-3 base), 32W triple (GX24q-3 base) or one (1) 42W triple (GX24q-4 base) 4-pin CFL lamp(s), or one (1) 75W A-19 incandescent lamp.

CFL socket injection molded plastic. INC socket fired ceramic rated for 4KV. Lamps furnished by others.

**LED**

8" L0:1000 nominal lumens at max 15.5W

Long-life ELD system coupled with electrical driver to deliver optimal performance. Electronic drivers are available for 120-277 applications. The standard driver is ELV reverse phase dimmable. Type IV-Forward throw optic is standard

**Installation/Electrical**

AP and U posts are mounted on base plate with four 3/8" x 6" J-bolts. Three conduit feeds through the center of the base. Supplied with base plate, bolts, mounting hardware and template. W post is direct burial and is supplied with a waterproof J-Box which is mounted at the rear of the wood post.

**Options**

Photocell (PH), Blunt Nose (BN) (for walking hazard locations), Clear Tempered Glass Lense to achieve full cut-off (TGL) [Dark Sky Compliant].

**Labels**

U.L. and C.U.L. listed for wet location.

**Modifications**

Shaper's skilled craftspeople with their depth of experience offer the designer the flexibility to modify standard bollard for project specific solutions. Contact the factory regarding scale options, unique finishes, mounting, additional materials/colors, or decorative detailing.

**982 SERIES**

Exterior Bollard  
Architectural Wedge Bol-  
lard



Shaper Lighting certifies that its products satisfy the requirements of Section 1605 of the American Recovery and Reinvestment Act (also known as the ARRA Buy American provision).



Shaper offers a selection of exterior luminaires that are "Dark Sky Compliant". The IESNA (Illuminating Engineering Society of North America) defines Full Cut-Off as fixtures with light distributions of 0% candela at 90° and 10% at 80°. Full Cut-Off luminaires carry the endorsement of the International Dark-Sky Association (IDA) for their effectiveness in limiting the detrimental effects of sky glow, also referred to as "Light Pollution". Many exterior luminaires offer a clear, tempered glass option that meets the IES criteria for Full Cut-Off.



Shaper has a long-standing history of offering environmentally-friendly fixtures. The copper and bronze alloys used in our exterior luminaires feature up to 98% recycled content, contribute less undesirable air emissions compared to painted aluminum and are easy to recycle.

Refer to the Icon Legend  
Link on shaperlighting.com.

**ORDERING INFORMATION**

Sample Number: 982-AP-1-CFL/2-277V-ALP-BK-36

Series	Style	Lamp	Post Finish	Fixture Finish	Overall Height
982 =Architectural Wedge Bollard	AP =Aluminum Post U =Post W=Wood <sup>1</sup> Post	CFL/1 (26/32/42W-Triple) CFL/2 (26/32/42W-Triple) INC/1/75 <b>LED</b> L0/827 L0/830 L0/840	<sup>3, 4</sup> <u>Standard</u> BK = Black WH =White <u>Premium</u> ALP = Aluminum Paint BM =Bronze Metallic CC =Custom Color DP =Dark Platinum GM =Gold Metallic GRM =Graphite Metallic GY =Grey	<sup>3</sup> <u>Standard</u> NBZ = Natural Bronze <u>Premium</u> ALP = Aluminum Paint BK =Black BM = Bronze Metallic CC =Custom Color DP = Dark Platinum GM = Gold Metallic GRM =Graphite Metallic GY = Grey VG = Verdigris WH = White	<sup>5</sup> 36" or Specify  <b>Options</b> BN =Blunt Nose PH =Photocell TGL =Sandblasted Tempered Glass Lens
	<b>Fixture Number</b> 1 =1 Fixture 2 =2 Fixtures	<b>Voltage</b> 120V 277V <sup>2</sup> 347V <sup>2</sup>  <b>LED</b> UNV (122-277V)			

**Notes:**

<sup>1</sup> The tight-knotted cedar post will naturally weather over time to a dark gray-brown appearance.

<sup>2</sup> Available with CFL only.

<sup>3</sup> Natural bronze or two component polyurethane paint, 2.5 mil nominal thickness for superior protection against fade or wear.

<sup>4</sup> Not available with Wood Post (W).

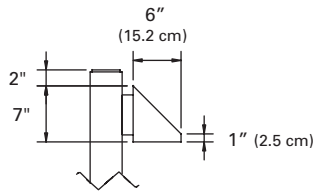
<sup>5</sup> Overall height is from the finished ground to the top of fixture.

**LED Lamp**  
L0-1000 nominal lumens at max 15.5W

**Cooper Lighting**

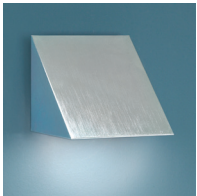
by **F.T.N**

## OPTIONS

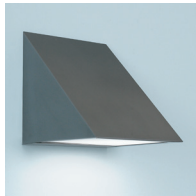


## BLUNT NOSE OPTION (BN)

### COMPANION PRODUCTS



682-WP



684-WP



687-WP



982-PT