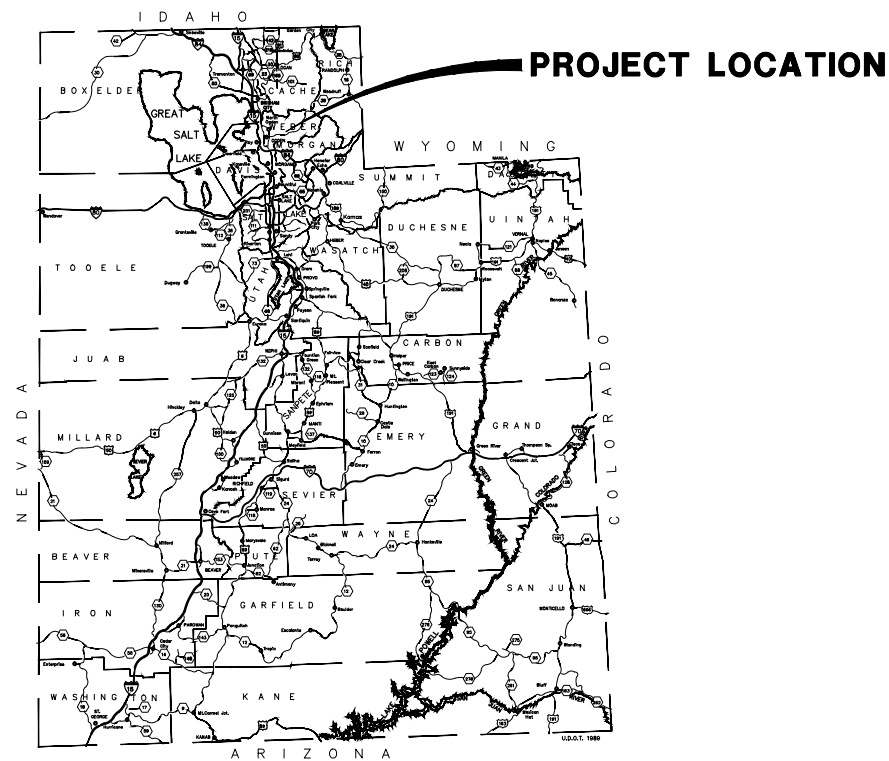


WATER SYSTEM UPDATES AT WEBER MEMORIAL PARK UDDW SYSTEM #29078 (WS001)

JULY 2014

REVIEW SET



NOTE: THIS IS A SEASONAL WATER SYSTEM AND WILL BE DRAINED AT VALVE MANHOLE IN FALL. THE WELL PUMP WILL OPERATE OFF LEVELS IN THE SUCTION AND STORAGE TANKS.



533 W 2600 S, SUITE 275, BOUNTIFUL, UT 84010
PHONE (801) 299-1327 FAX (801) 299-0153

REVIEW SET ONLY

GENERAL NOTES

1. THE CONTRACTOR SHALL EXAMINE THE DRAWINGS AND SHALL NOTIFY THE OWNER OF ANY DISCREPANCIES OR CONFLICTS BEFORE PROCEEDING WITH THE WORK.
2. THE CONTRACTOR SHALL VERIFY AND BE RESPONSIBLE FOR ALL DIMENSIONS AND CONDITIONS AT THE SITE AND SHALL NOTIFY THE ENGINEER OF DISCREPANCIES BETWEEN THE ACTUAL CONDITIONS AND INFORMATION SHOWN ON THE DRAWINGS BEFORE PROCEEDING WITH THE WORK.
3. ALL WORK SHALL CONFORM TO AT LEAST THE MINIMUM STANDARDS OF THE INTERNATIONAL BUILDING CODE (LATEST EDITION), WEBER COUNTY STANDARDS AND SPECIFICATIONS AND OTHER REGULATORY AGENCIES EXERCISING AUTHORITY OVER ANY PORTION OF THE WORK WHERE APPLICABLE.
4. SPECIFIC NOTES AND DETAILS SHALL TAKE PRECEDENCE OVER GENERAL NOTES, TYPICAL DETAILS AND SPECIFICATIONS.
5. THE CONTRACTOR SHALL REFER TO THE TECHNICAL PROVISIONS FOR INFORMATION NOT COVERED BY THESE GENERAL NOTES OR THE DRAWINGS.
6. THE CONTRACTOR SHALL PROVIDE AND BE RESPONSIBLE FOR THE TEMPORARY ERECTION OF BRACING AND SHORING AS REQUIRED FOR STABILITY OF STRUCTURES AND EXCAVATIONS DURING ALL PHASES OF CONSTRUCTION.
7. PROJECT HORIZONTAL AND VERTICAL DATUM ARE MODIFIED STATE PLANE COORDINATES (PROJECT SPECIFIC) NAD83, UTAH NORTH ZONE, U.S. SURVEY FEET.
8. THE CONTRACTOR SHALL OBTAIN THE NECESSARY PERMITS REQUIRED TO COMPLETE CONSTRUCTION OF THE PROJECT AS DETAILED.
9. THE CONTRACTOR SHALL BE REQUIRED TO FURNISH ALL TEMPORARY WATER, POWER, OR OTHER UTILITIES AS REQUIRED TO COMPLETE CONSTRUCTION OF THE PROJECT AS DETAILED. WATER FOR COMPACTION, FLUSHING AND HYDROSTATIC TESTING WILL BE SUPPLIED BY THE OWNER AND CHARGED TO THE CONTRACTOR.
10. THE CONTRACTOR SHALL BE REQUIRED TO PROVIDE ALL FLAGGING, BARRICADES AND TRAFFIC CONTROL AS MAY BE NECESSARY TO ENSURE SAFETY TO THE GENERAL PUBLIC DURING CONSTRUCTION. A TRAFFIC CONTROL PLAN SHALL BE DEVELOPED BY THE CONTRACTOR PRIOR TO CONSTRUCTION AND SUBMITTED TO THE OWNER AND ENGINEER.
11. THE CONTRACTOR SHALL HOLD A VALID UTAH'S CONTRACTOR'S LICENSE PRIOR TO BEGINNING CONSTRUCTION.
12. THE CONTRACTOR SHALL MAINTAIN CLEAN CONSTRUCTION AREAS. ALL DEBRIS, RUBBISH AND TRASH MUST BE REMOVED FROM THE SITE AND DISPOSED OF IN A LAWFUL MANNER.
13. THE CONTRACTOR SHALL BE REQUIRED TO MAINTAIN A SET OF DRAWINGS AT THE JOB SITE FOR THE PURPOSE OF RECORDING ALL ACTUAL MEASUREMENTS AND DETAILS TO BE USED IN THE PREPARATION OF "AS-BUILTS" OR "RECORD" DRAWINGS. FINAL PAYMENT WILL NOT BE RELEASED UNTIL "AS-BUILTS" OR "RECORD" DRAWINGS HAVE BEEN SUBMITTED TO AND ACCEPTED BY THE ENGINEER.

PIPING NOTES

1. ALL DUCTILE IRON PIPE SHALL BE PRESSURE CLASS OR SPECIAL THICKNESS CLASS CONFORMING TO ANSI/AWWA C150/A21.50 & C151/A21.51 WITH 8 mil. POLYETHYLENE WRAP FOR BURIED INSTALLATIONS.
2. ALL DUCTILE IRON FITTINGS SHALL BE RATED FOR WORKING PRESSURES AS SPECIFIED ON THE DRAWINGS.
3. POLYVINYL CHLORIDE PIPE SHALL CONFORM TO AWWA C900 (12" DIAMETER OR LESS) OR AWWA C905 (DIAMETERS LARGER THAN 12") WITH A DIMENSION RATIO (DR) OF 18 OR LESS.
4. HIGH DENSITY POLYETHYLENE PIPE (HDPE) SHALL BE PE 4710 HIGH DENSITY POLYETHYLENE MEETING CELL CLASSIFICATION 44574 C PER ASTM D3350.
5. ALL BOLTS FOR DIRECT BURY FITTINGS SHALL BE COATED WITH FM GREASE, AND THE ENTIRE FITTING SHALL BE WRAP WITH 8 mil. POLYETHYLENE PRIOR TO BACKFILLING.
6. ALL CULINARY WATER LINES SHALL BE INSTALLED, TESTED AND DISINFECTED PER AWWA C651. ALL MATERIAL THAT MAY CONTACT DRINKING WATER, INCLUDING PIPES, GASKETS, LUBRICANTS, O-RINGS, SHALL BE ANSI/NSF 61, DRINKING WATER SYSTEM COMPONENTS - HEALTH EFFECTS. TO PERMIT FIELD VERIFICATION OF THIS CERTIFICATION, ALL SUCH COMPONENTS SHALL BE APPROPRIATELY STAMPED WITH THE NSF LOGO. FLUSHING AND DISINFECTION OF WATER LINES SHALL BE IN ACCORDANCE WITH AWWA STANDARD C651.
7. ALL OPEN ENDS OF PIPE SHALL BE EFFECTIVELY SEALED AT THE END OF THE DAY'S WORK.
8. ALL PIPE LINES SHALL BE PRESSURE TESTED PER ASTM C924-89.
9. ALL BURIED GALVANIZED PIPE AND FITTINGS SHALL BE WRAPPED WITH WEATHER PIPE PROTECTION TAPE OR APPROVED EQUAL.

VALVE NOTES

1. ALL GATE VALVES SHALL BE RESILIENT SEAT GATE VALVES AND SHALL CONFORM TO AWWA C-509. GATE VALVES INSTALLED IN PRV VAULT SHALL BE FURNISHED WITH HANDWHEEL OPERATORS. VALVES INSTALLED IN DIRECT BURY APPLICATIONS SHALL BE FURNISHED WITH A TWO-INCH SQUARE OPERATING NUT AND SLIP TYPE, CAST IRON VALVE BOX.
2. ALL BUTTERFLY VALVES FOR STANDARD PRESSURE APPLICATIONS SHALL BE TIGHT-CLOSING RUBBER SEAT BUTTERFLY VALVES AND SHALL MEET THE REQUIREMENTS OF AWWA C-504 FOR CLASS 150 B VALVES AND RATED FOR WORKING PRESSURE OF 150 PSI. HIGH PRESSURE BUTTERFLY VALVES SHALL BE RATED FOR WORKING PRESSURES AS SPECIFIED ON THE DRAWINGS.

CONCRETE NOTES

1. ALL WORK PERTAINING TO CONCRETE CONSTRUCTION SHALL CONFORM TO ACI 318-95, ACI 301-95, AND THE PROJECT SPECIFICATIONS.
2. ALL STRUCTURAL CONCRETE SHALL HAVE A MINIMUM 28-DAY COMPRESSIVE STRENGTH OF 4000 PSI AND CONTAIN 4% TO 6% ENTRAINED AIR. ALL CONCRETE FOR THRUST RESTRAINT SHALL HAVE A MINIMUM 28-DAY COMPRESSIVE STRENGTH OF 3000 PSI.
3. NO CONCRETE SHALL BE PLACED WITH A SLUMP IN EXCESS OF 4 INCHES.
4. THE CONTRACTOR SHALL SUBMIT A CONCRETE MIX DESIGN FOR APPROVAL AT LEAST 5 WORKING DAYS BEFORE PLACING ANY CONCRETE PRODUCED WITH THAT MIX DESIGN.
5. THE CONTRACTOR SHALL SUBMIT A CONCRETE MIX DESIGN FOR APPROVAL AT LEAST 5 WORKING DAYS BEFORE PLACING ANY CONCRETE PRODUCED WITH THAT MIX DESIGN.
6. AGGREGATE FOR CONCRETE SHALL CONFORM TO ALL THE REQUIREMENTS AND TESTS OF ASTM C33 AND PROJECT SPECIFICATIONS. MAXIMUM AGGREGATE SIZE SHALL BE 1 INCH.
7. ANY USE OF HIGH-EARLY CONCRETE SHALL BE CONTINGENT ON ENGINEER'S APPROVAL WHICH SHALL BE BASED ON TIMELY SUBMITTAL OF MIX DESIGN PRIOR TO PLACEMENT.
8. ALL CONCRETE PLACEMENTS SHALL BE SCHEDULED AT LEAST 24 HOURS IN ADVANCE TO ALLOW SCHEDULING OF FIELD TESTING. ALL CONCRETE TESTING SHALL BE PROVIDED BY THE OWNER.
9. EXCEPT AS OTHERWISE NOTED, EXPOSED CONCRETE CORNERS AND EDGES SHALL HAVE 3/4" CHAMFERS.
10. ALL REINFORCING STEEL DOWELS, ANCHOR BOLTS, AND OTHER INSERTS OR EMBEDMENTS SHALL BE SECURED IN POSITION PRIOR TO PLACING CONCRETE.
11. CONCRETE SHALL NOT BE ALLOWED TO DROP MORE THAN 6 FEET VERTICALLY DURING PLACEMENT. TREMIE HOSES AND CHUTE EXTENSIONS SHALL BE USED TO ALLOW CONCRETE TO BE PLACED AS CLOSE TO ITS FINAL RESTING POSITION AS POSSIBLE.
12. INTERNAL VIBRATORS SHALL BE USED TO CONSOLIDATE ALL PLACED CONCRETE. VIBRATORS SHALL NOT BE USED TO TRANSPORT CONCRETE.
13. ALL CONCRETE WALLS SHALL BE ALLOWED TO CURE A MINIMUM OF 21 DAYS OR REACH A MINIMUM COMPRESSIVE STRENGTH OF 3500 PSI BEFORE BACKFILLING.
14. ALL CONCRETE THRUST BLOCKS, COLLARS, AND RESTRAINTS SHALL BE ALLOWED TO CURE A MINIMUM OF 3 DAYS BEFORE BACKFILLING. ALL THRUST RESTRAINTS MUST BE INSPECTED AND APPROVED BY THE ENGINEER BEFORE BACKFILLING. THRUST BLOCKS SHALL BE RATED AT 250 PSI GAUGE.
15. ALL CONCRETE SHALL BE PROPERLY AND ADEQUATELY PROTECTED AND CURED AS FOLLOWS:

 TEMPERATURE - THE TEMPERATURE OF THE CONCRETE SHALL BE MAINTAINED BETWEEN 50 AND 70 DEGREES FAHRENHEIT FOR A MINIMUM OF 7 DAYS. THIS MAY REQUIRE HEATING AND/OR COOLING OF CONCRETE.

 MOISTURE - ALL CONCRETE SURFACES, HORIZONTAL AND VERTICAL SHALL BE KEPT MOIST FOR A MINIMUM OF 7 DAYS AFTER PLACEMENT. CURING COMPOUNDS MAY ONLY BE USED WITH WRITTEN PERMISSION OF THE ENGINEER.
16. CONSTRUCTION JOINTS NOT SHOWN ON THE DRAWINGS BUT PROPOSED BY THE CONTRACTOR SHALL BE LOCATED AND DETAILED ON CONTRACTOR DRAWINGS AND SUBMITTED TO THE ENGINEER FOR REVIEW AND ACCEPTANCE.

EARTHWORK NOTES

1. THE CONTRACTOR SHALL BE RESPONSIBLE TO CONTACT BLUE STAKES TO HAVE UNDERGROUND UTILITIES MARKED IN THE FIELD PRIOR TO ALL EARTHWORK OPERATIONS.
2. THE SITE SHALL BE CLEARED OF ALL GRASSES, SHRUBS, TREES, AND ROOTS. TOPSOIL SHALL BE STRIPPED AND STOCKPILED FOR REUSE ON FILL SLOPES, AND DISTURBED NON-TRAFFIC AREAS. SIDE SLOPES SHALL BE LAID BACK AT SLOPES NO STEEPER THAN 3:1.
3. ALL TRENCHES AND EXCAVATIONS SHALL BE CUT, PROTECTED AND SUPPORTED AS PRESCRIBED BY OSHA.
4. ALL TRENCHES AND EXCAVATIONS SHALL BE CUT, PROTECTED AND SUPPORTED AS PRESCRIBED BY OSHA.
5. THE CONTRACTOR SHALL BE RESPONSIBLE TO PROVIDE AND MAINTAIN ANY EQUIPMENT NECESSARY TO DEWATER EXCAVATIONS.
6. TOPSOIL SHALL BE REPLACED AND GRADED PRIOR TO REVEGETATION. DISTURBED AREAS SHALL BE RESEEDING USING A SEED MIX SPECIFIED BY ON THE EROSION CONTROL DETAILS.

EROSION CONTROL NOTES

1. PER UDEQ, STORM WATER GENERAL PERMIT FOR CONSTRUCTION ACTIVITIES GENERAL PERMIT NO. UTR 300000, CONSTRUCTION ACTIVITY INCLUDING CLEARING, GRADING, EXCAVATION, AND DEMOLITION THAT DISTURBS ONE OR MORE ACRES OF LAND SHALL REQUIRE INCLUSION IN THE GENERAL PERMIT AND COMPLY WITH THE REQUIREMENTS THEREIN.
2. THE TOTAL PROJECT AREA OF DISTURBANCE IS LESS THAN ONE ACRE; THEREFORE AN UPDES STORMWATER PERMIT IS NOT REQUIRED.

CHECKED	DRAWN	DESIGN	DATE	NO.
	MMW	RJR	7/3/14	A
RJR		REVISIONS		

WEBER COUNTY RECREATIONAL FACILITIES
 WATER SYSTEM UPDATES AT WEBER MEMORIAL PARK
 GENERAL NOTES



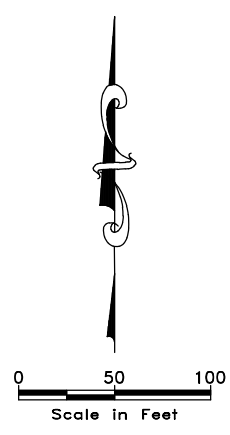
533 W. 2600 S. SUITE 275, BOUNTIFUL, UT 84010
 PHONE (801) 299-1327 FAX (801) 299-0153

0 1/2 1
 SHEET
G-3
 DRAWING IS TO SCALE
 IF BAR MEASURES:
 1" = FULL SCALE
 1/2" = HALF SCALE

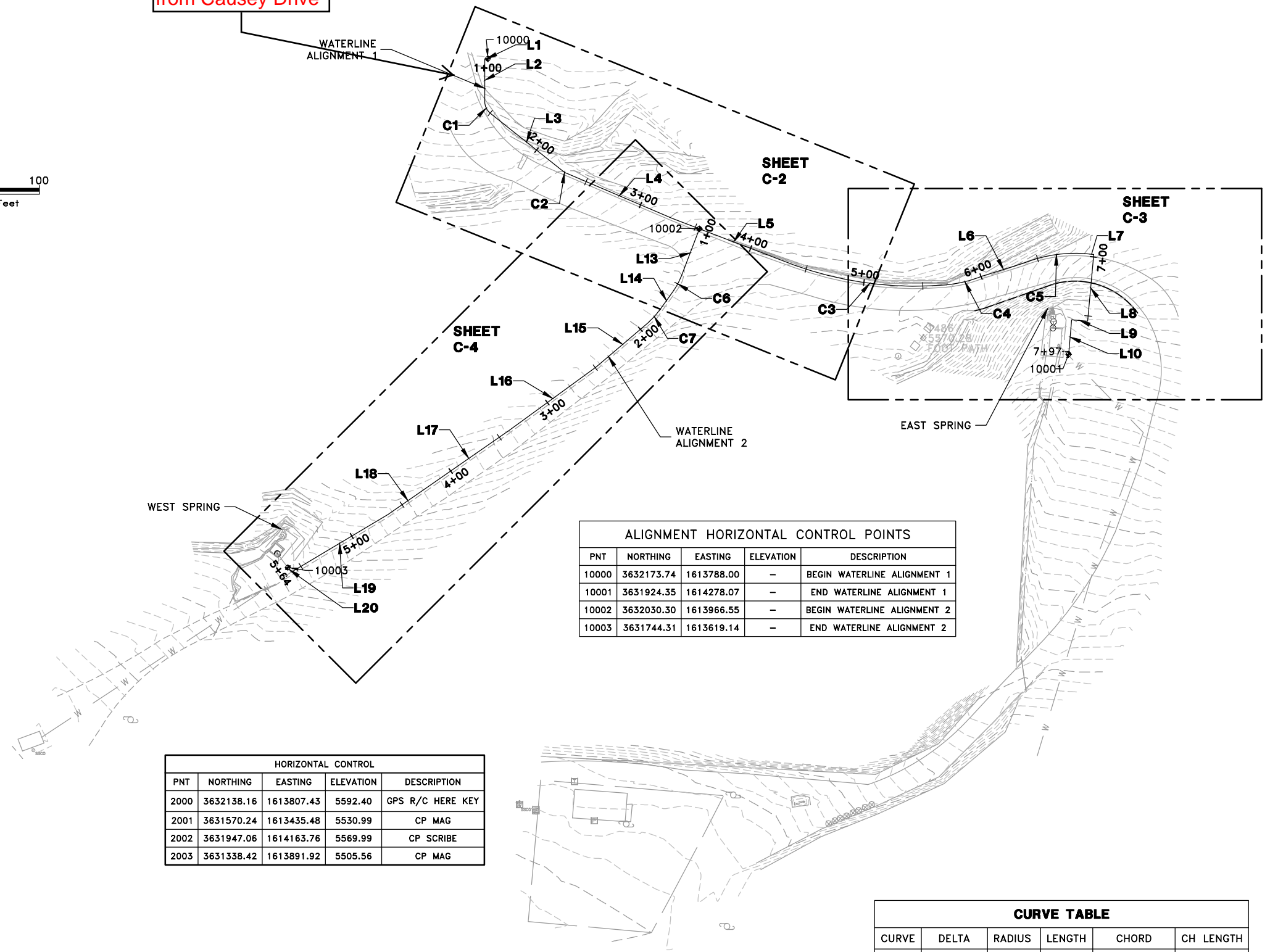
REVIEW SET ONLY

07/07/2014 W:\Weber Memorial Park\Drawings\G-3.dwg

MWC 07/02/2014 W:\Weber Memorial Park\Drawings\C-1.dwg



Entrance to Weber Memorial Park from Causey Drive



ALIGNMENT HORIZONTAL CONTROL POINTS				
PNT	NORTHING	EASTING	ELEVATION	DESCRIPTION
10000	3632173.74	1613788.00	-	BEGIN WATERLINE ALIGNMENT 1
10001	3631924.35	1614278.07	-	END WATERLINE ALIGNMENT 1
10002	3632030.30	1613966.55	-	BEGIN WATERLINE ALIGNMENT 2
10003	3631744.31	1613619.14	-	END WATERLINE ALIGNMENT 2

HORIZONTAL CONTROL				
PNT	NORTHING	EASTING	ELEVATION	DESCRIPTION
2000	3632138.16	1613807.43	5592.40	GPS R/C HERE KEY
2001	3631570.24	1613435.48	5530.99	CP MAG
2002	3631947.06	1614163.76	5569.99	CP SCRIBE
2003	3631338.42	1613891.92	5505.56	CP MAG

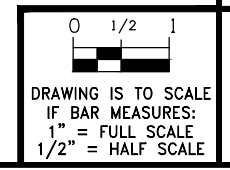
CURVE TABLE					
CURVE	DELTA	RADIUS	LENGTH	CHORD	CH LENGTH
C1	51°24'17"	12.00'	10.77'	S25°42'09"E	10.41'
C2	15°30'14"	12.00'	3.25'	S59°09'24"E	3.24'
C3	24°40'33"	300.76'	129.53'	S82°41'40"E	128.53'
C4	17°28'39"	103.88'	31.69'	N76°13'43"E	31.57'
C5	27°31'57"	116.92'	56.18'	N82°12'14"E	55.64'
C6	14°38'30"	50.00'	12.78'	S28°15'31"W	12.74'
C7	13°59'43"	50.00'	12.21'	S42°34'38"W	12.18'

LINE TABLE		
LINE	DIRECTION	LENGTH
L1	N90°00'00"W	2.74'
L2	S0°00'00"E	36.34'
L3	S51°24'17"E	78.78'
L4	S66°54'31"E	97.20'
L5	S69°03'44"E	111.25'
L6	N72°49'15"E	36.78'
L7	S84°52'54"E	3.40'
L8	S5°07'06"W	56.51'
L9	N84°52'54"W	13.57'
L10	S5°07'06"W	29.31'
L13	S20°56'16"W	43.52'
L14	S35°34'46"W	21.62'
L15	S49°34'29"W	58.90'
L16	S53°54'32"W	90.52'
L17	S55°09'59"W	83.80'
L18	S55°24'32"W	41.03'
L19	S59°10'46"W	95.03'
L20	N36°52'53"W	4.75'

NOTE:
 1- PROJECT HORIZONTAL AND VERTICAL DATUM ARE BASED ON MODIFIED STATE PLANE COORDINATES (PROJECT SPECIFIC), NAD83, UTAH NORTH ZONE, US SURVEY FEET

HORIZONTAL CONTROL PLAN
 HORIZ SCALE: 1"=40'-0"

REVIEW SET ONLY



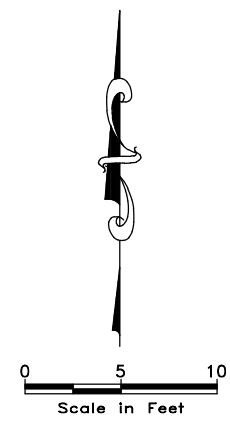
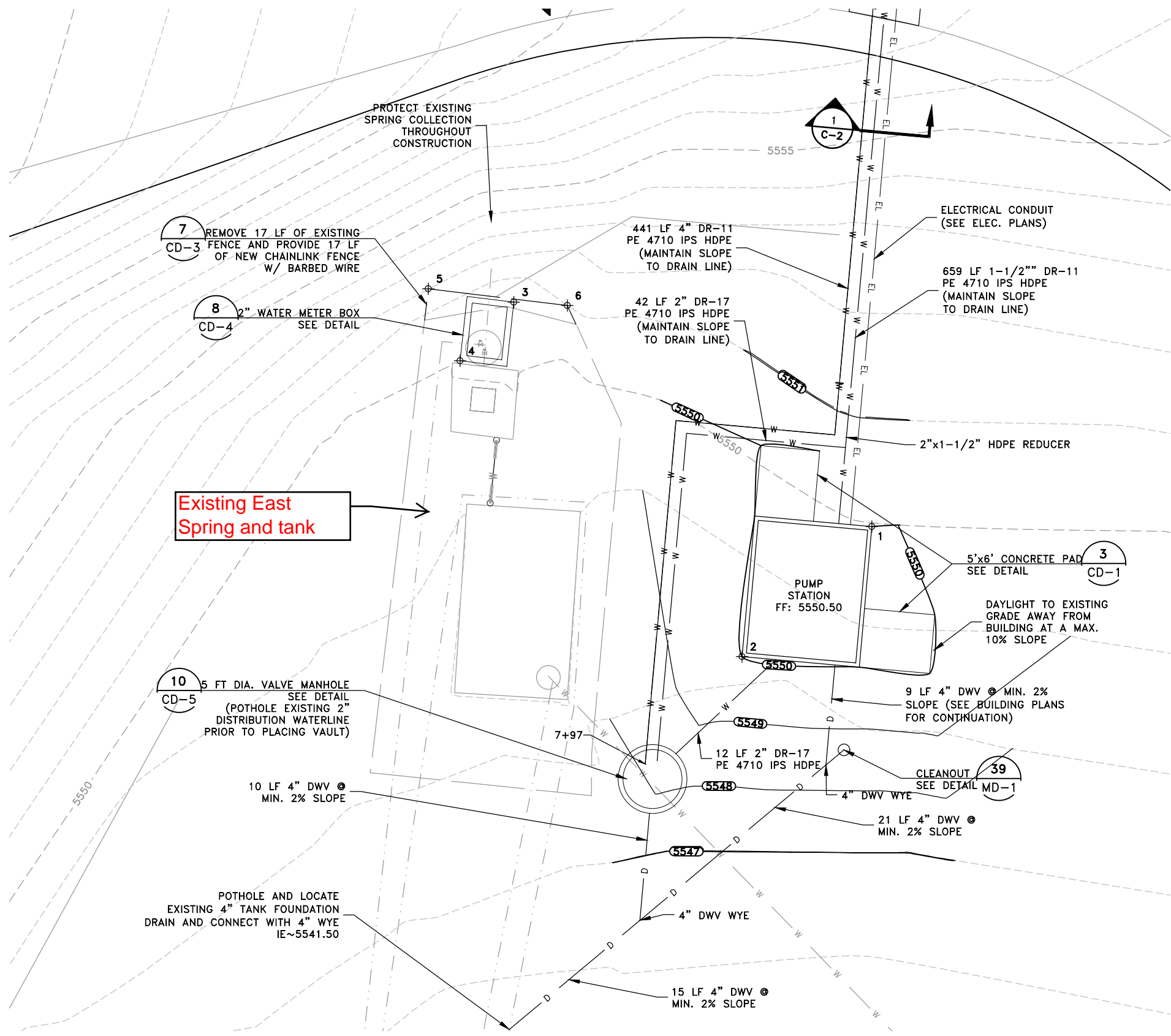
NO.	DATE	DESIGN	DRAWN	CHECKED
A	7/3/14	RJR	MWC	RJR
REVISIONS				

WEBER COUNTY RECREATIONAL FACILITIES
 WATER SYSTEM UPDATES AT WEBER MEMORIAL PARK
 EXISTING TOPOGRAPHY AND HORIZONTAL CONTROL PLAN



SHEET
C-1

MWC 07/02/2014 W:\Weber Memorial Park\Drawings\C-2 to C-5.dwg



NOTES:

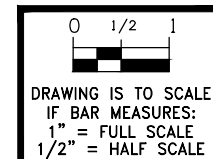
- 1- CONTRACTOR TO POTHOLE AND LOCATE THE EXISTING IRRIGATION PIPELINE PRIOR TO CONSTRUCTION OF NEW WATERLINE.
- 2- MINIMUM COVER ON WATERLINE IS 3 FT, AND 2 FT ON CONDUIT FOR LEVEL TRANSDUCER.
- 3- PROVIDE THRUST RESTRAINT AT ALL UNRESTRAINED BENDS AND GATE VALVES PER DETAIL 1/CD-1. HDPE TO FLANGED FITTINGS SHALL BE INSTALLED WITH A FLANGE ADAPTER FUSED TO PIPE AND A BACK UP RING.
- 4- COORDINATE DRAINING OF THE SUCTION TANK WITH COUNTY PERSONNEL.
- 5- PIPE LINEAR FOOTAGE SHOWN IS BETWEEN BENDS, TEES, OR DIFFERENT PIPE MATERIALS.
- 6- HDPE PIPE SHALL BE LAID IN TRENCH AND ALLOWED TIME PER MANUFACTURER'S RECOMMENDATIONS TO EXPAND/CONTRACT TO TRENCH AMBIENT TEMPERATURE BEFORE FINAL CONNECTIONS ARE MADE.

HORIZONTAL CONTROL				
PNT	NORTHING	EASTING	ELEVATION	DESCRIPTION
1	3631944.54	1614297.35	5550.00	BLDG CORNER
2	3631933.48	1614286.31	5550.00	BLDG CORNER
3	3631963.62	1614266.92	5551.00	VAULT CORNER
4	3631958.64	1614262.34	5551.00	VAULT CORNER
5	3631964.76	1614259.64	5552.04	FENCE CORNER
6	3631963.33	1614271.46	5550.98	FENCE CORNER

HORIZONTAL CONTROL NOTES:

- 1- PROJECT HORIZONTAL AND VERTICAL DATUM ARE BASED ON MODIFIED STATE PLANE COORDINATES (PROJECT SPECIFIC), NAD83, UTAH NORTH ZONE, US SURVEY FEET
- 2- REFER TO ELECTRICAL PLANS FOR ELECTRICAL INFORMATION.

PUMP STATION SITE PLAN
SCALE: 1"=5'-0"



REVIEW SET ONLY

NO.	DATE	DESIGN	DRAWN	CHECKED
A	7/3/14	RJR	MWC	RJR
REVISIONS				

WEBER COUNTY RECREATIONAL FACILITIES
WATER SYSTEM UPDATES AT WEBER MEMORIAL PARK
PUMP STATION SITE PLAN

SHEET
C-5

METAL STANDING SEAM 24 GAUGE APPLIED OVER 30# FELT UNDERLAYMENT 5/8" OSB (COLOR: SIGNATURE 200 KOKO BROWN) AS MANUFACTURED BY MBCI OR APPROVED EQUAL

ATTIC VENT W/ BUG SCREEN

WALL PACK LIGHTNING (REFER TO ELECTRICAL PLANS)

6" GABLE WITH ALUMINUM SIDING (COLOR TO MATCH ROOF COLOR)

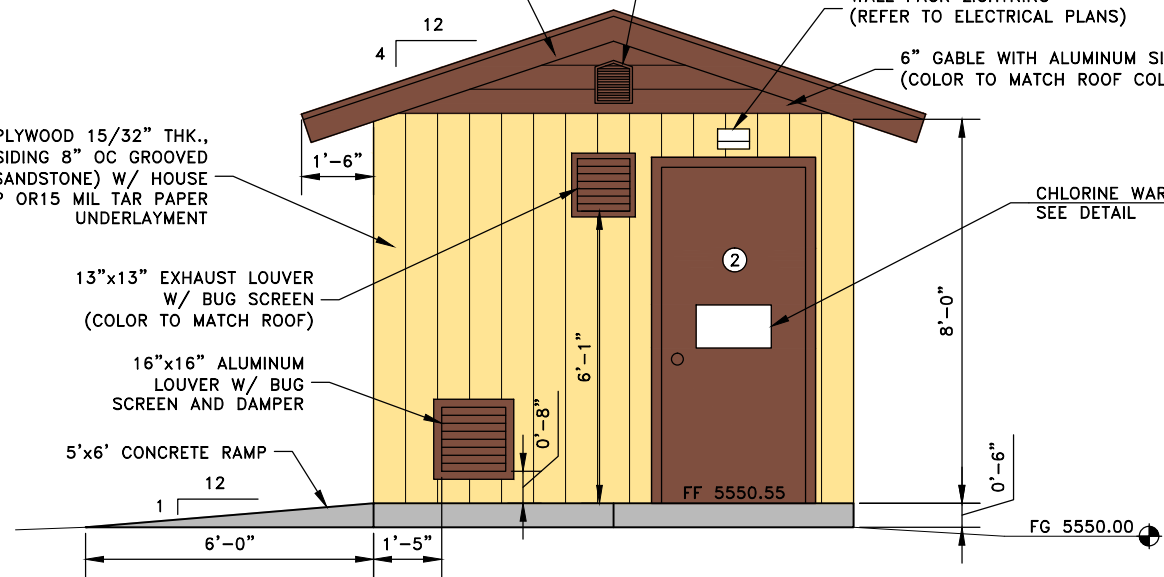
PAINTED PLYWOOD 15/32" THK., T1-11 SIDING 8" OC GROOVED (COLOR: SANDSTONE) W/ HOUSE WRAP OR 15 MIL TAR PAPER UNDERLAYMENT

13"x13" EXHAUST LOUVER W/ BUG SCREEN (COLOR TO MATCH ROOF)

16"x16" ALUMINUM LOUVER W/ BUG SCREEN AND DAMPER

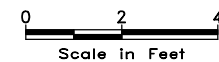
5'x6' CONCRETE RAMP

CHLORINE WARNING SIGN (16 AD-2) SEE DETAIL



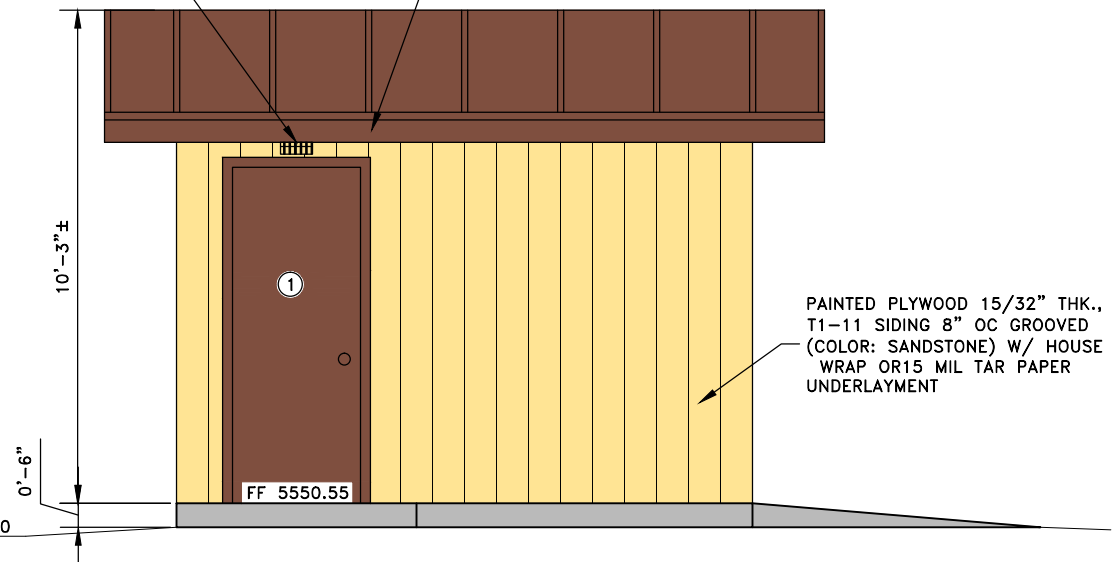
NORTH ELEVATION

SCALE: 1/2"=1'-0"



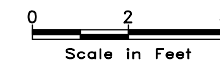
METAL STANDING SEAM 24 GAUGE APPLIED OVER 30# FELT UNDERLAYMENT 5/8" OSB (COLOR: SIGNATURE 200 KOKO BROWN) AS MANUFACTURED BY MBCI OR APPROVED EQUAL

WALL PACK LIGHTNING (REFER TO ELECTRICAL PLANS)

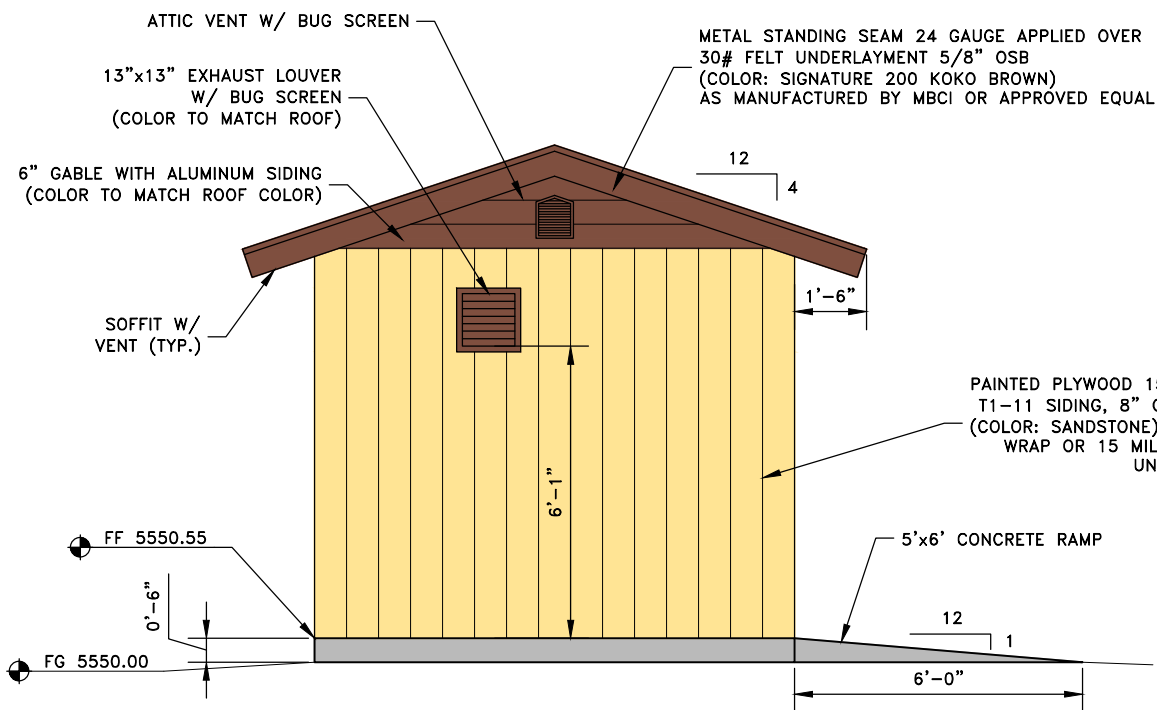


EAST ELEVATION

SCALE: 1/2"=1'-0"

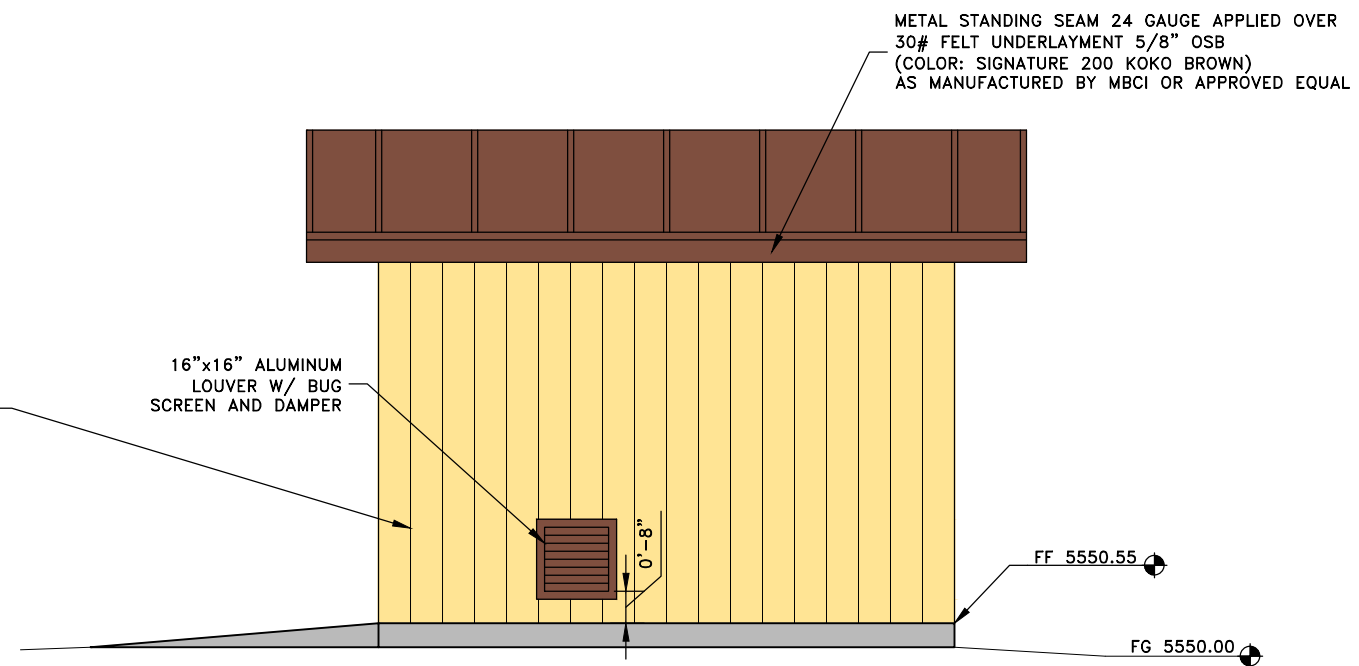
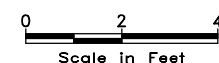


PAINTED PLYWOOD 15/32" THK., T1-11 SIDING 8" OC GROOVED (COLOR: SANDSTONE) W/ HOUSE WRAP OR 15 MIL TAR PAPER UNDERLAYMENT



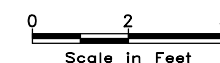
SOUTH ELEVATION

SCALE: 1/2"=1'-0"



WEST ELEVATION

SCALE: 1/2"=1'-0"



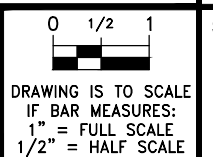
NOTE: SEE SHEET SCH-1 FOR DOOR AND FINISH SCHEDULE.

NO.	DATE	DESIGN	DRAWN	CHECKED
A	7/3/14	RJR	SSB	CGN
REVISIONS				

WEBER COUNTY RECREATIONAL FACILITIES
 WATER SYSTEMS UPDATE AT WEBER MEMORIAL PARK
 ARCHITECTURAL ELEVATIONS



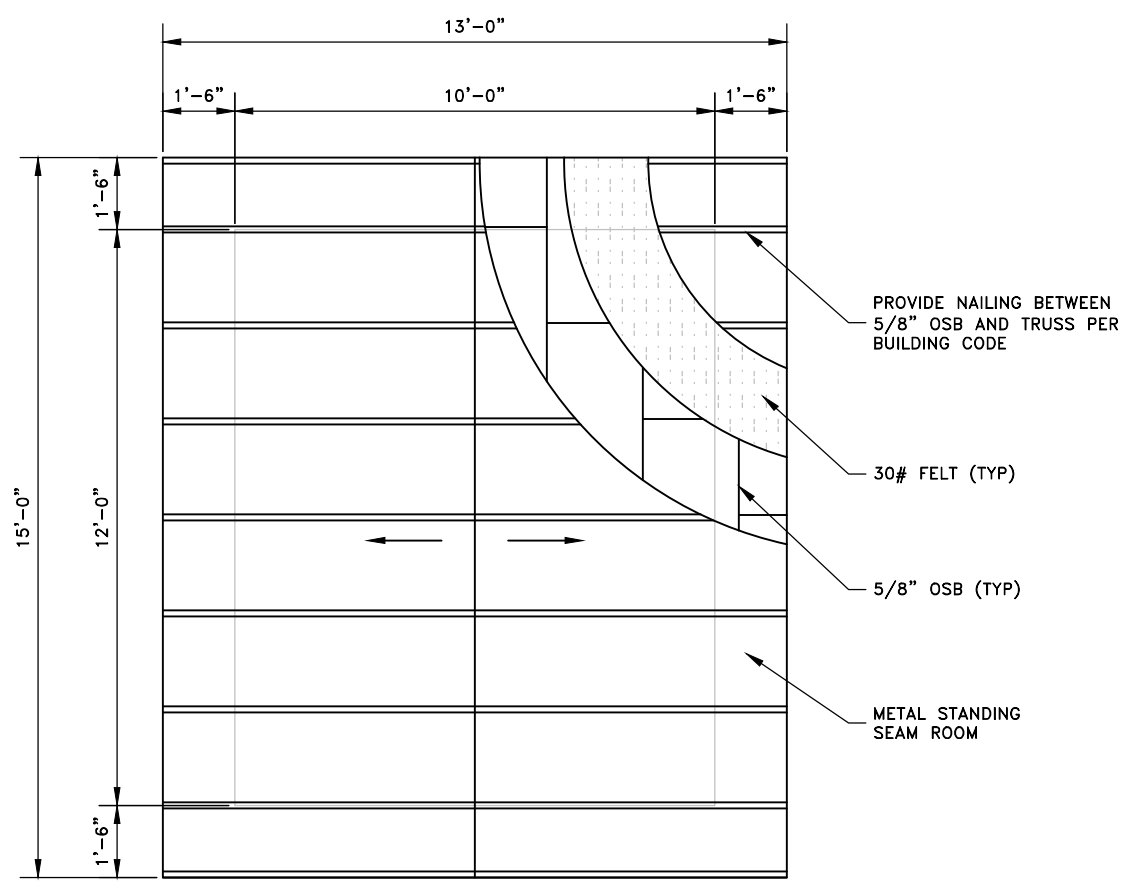
SHEET
PSA-2



REVIEW SET ONLY

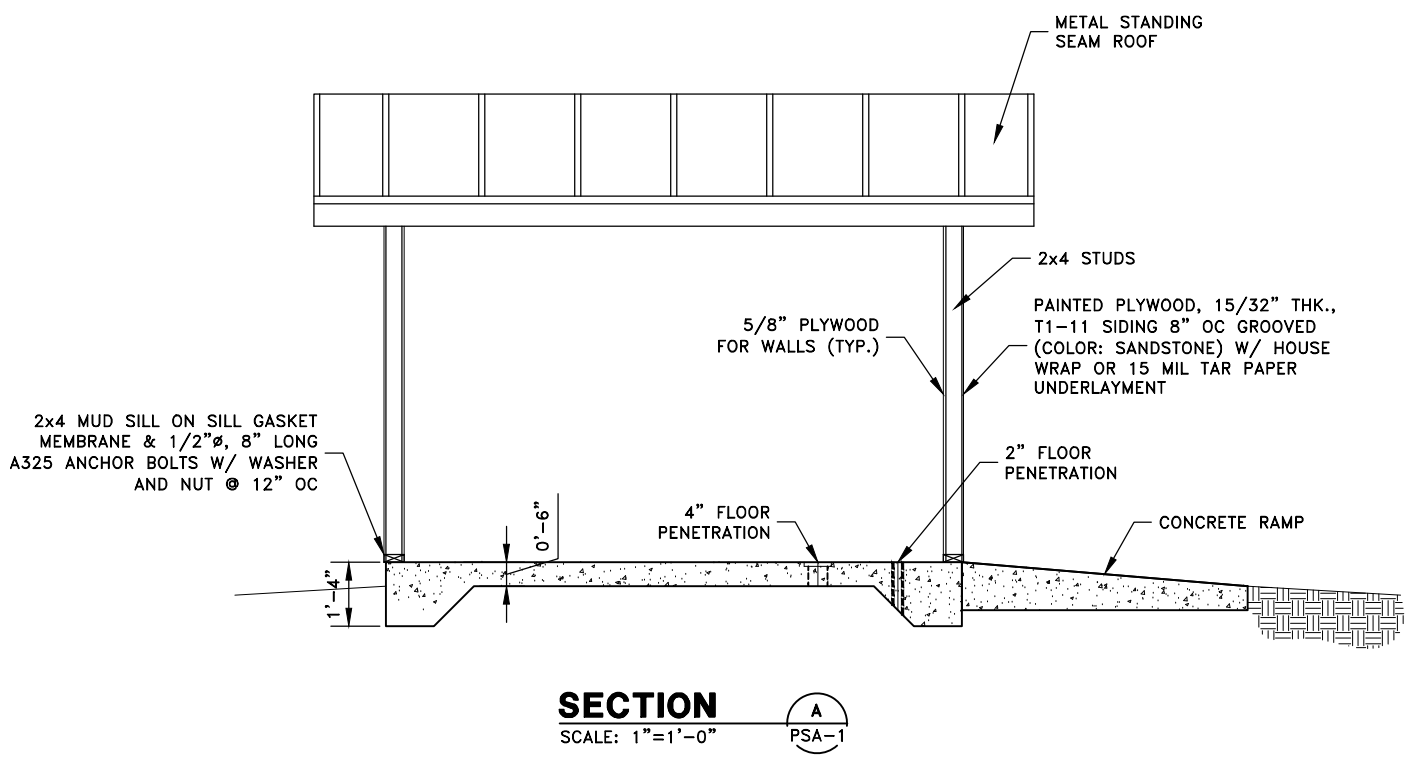
07/07/2014 W:\Weber Memorial Park\Drawings\PSA-2.dwg SB

07/07/2014 W:\Weber Memorial Park\Drawings\PSA-3.dwg

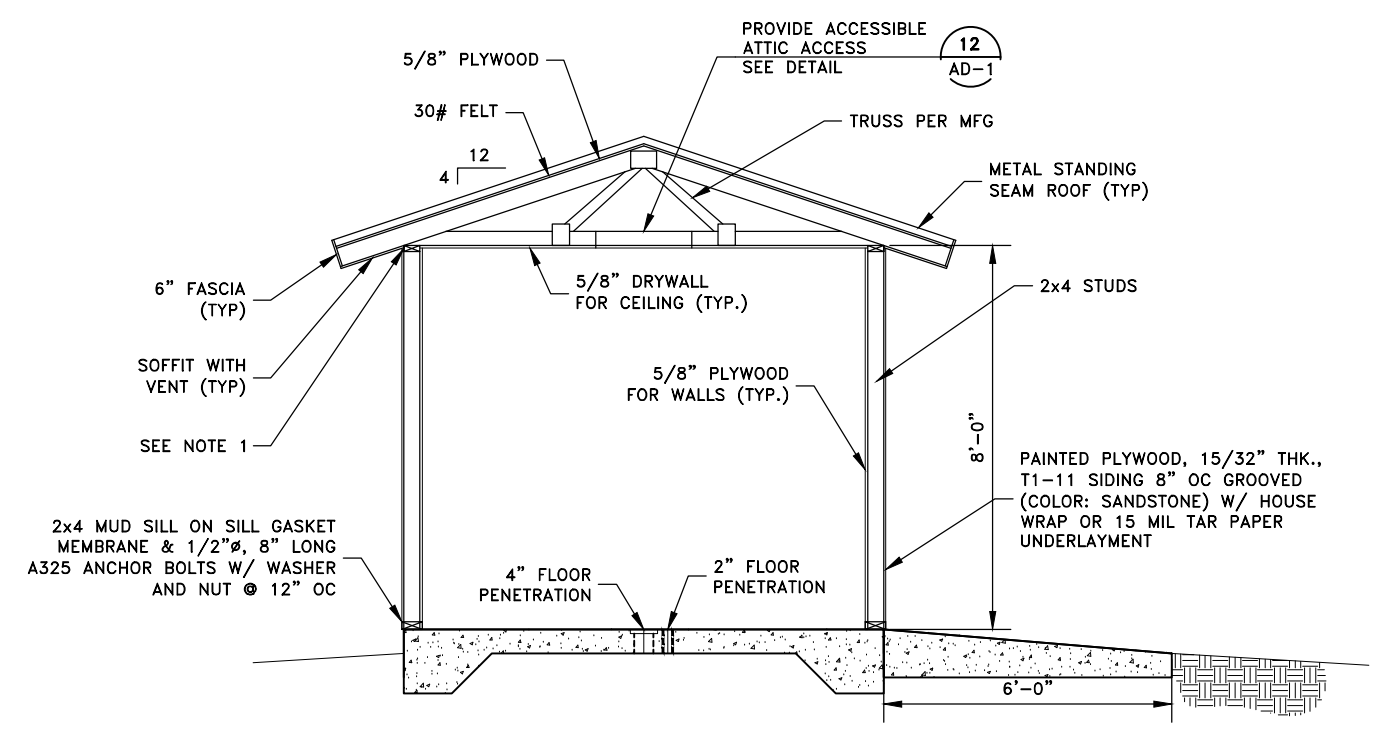


ROOF FRAMING PLAN
SCALE: 1/2"=1'-0"
0 2 4
Scale In Feet

- NOTES:
- 2x BLOCKING WITH VENT AS REQUIRED PER TRUSS MANUFACTURER.
 - PROVIDE 2 ROWS OF 2x4 BRACING BETWEEN TRUSSES AS REQUIRED BY TRUSS MANUFACTURER.
 - SEE SHEET SCH-1 FOR DOOR AND FINISH SCHEDULE.



SECTION A
SCALE: 1"=1'-0"
PSA-1



SECTION B
SCALE: 1"=1'-0"
PSA-1

NO.	DATE	DESIGN	DRAWN	CHECKED
A	7/3/14	RJR	SSB	CGN
REVISIONS				

WEBER COUNTY RECREATIONAL FACILITIES
 WATER SYSTEMS UPDATE AT WEBER MEMORIAL PARK
 PUMP STATION ROOF PLAN AND SECTIONS

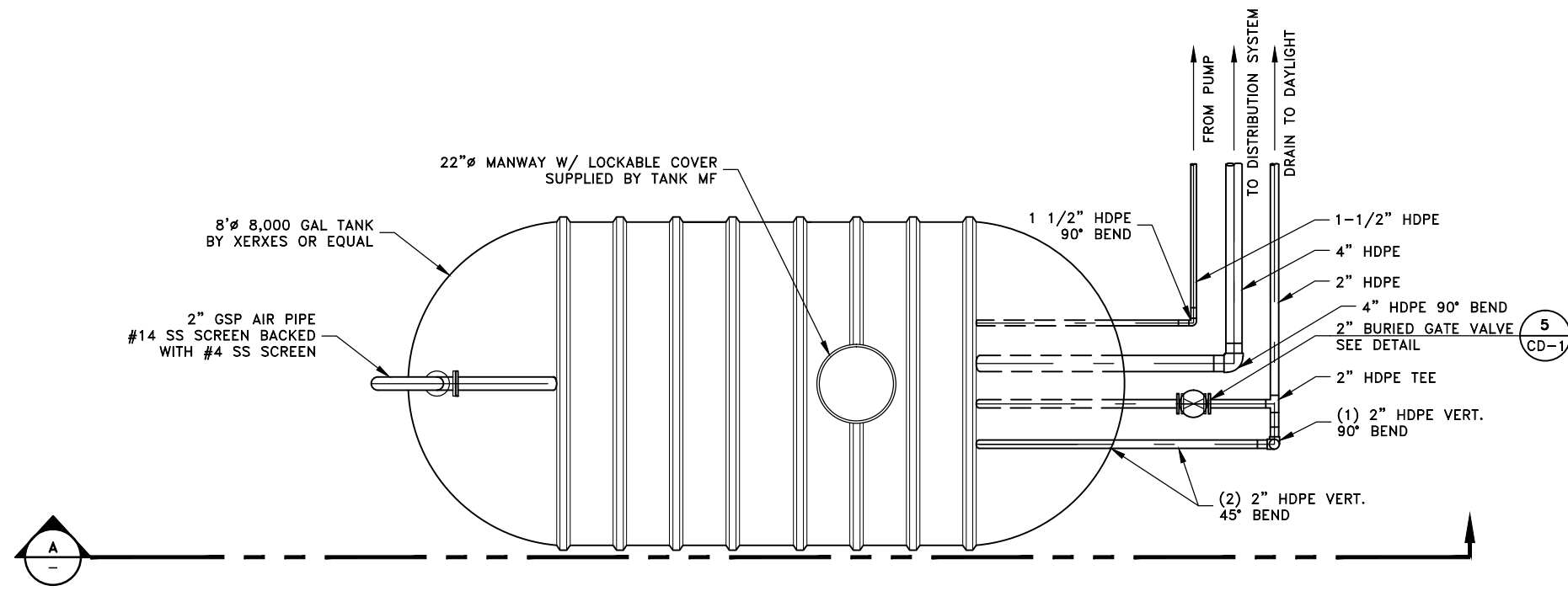
AQUA
ENGINEERING

533 W. 2600 S., SUITE 275, BOUNTIFUL, UT 84010
PHONE (801) 299-1327 FAX (801) 299-0153

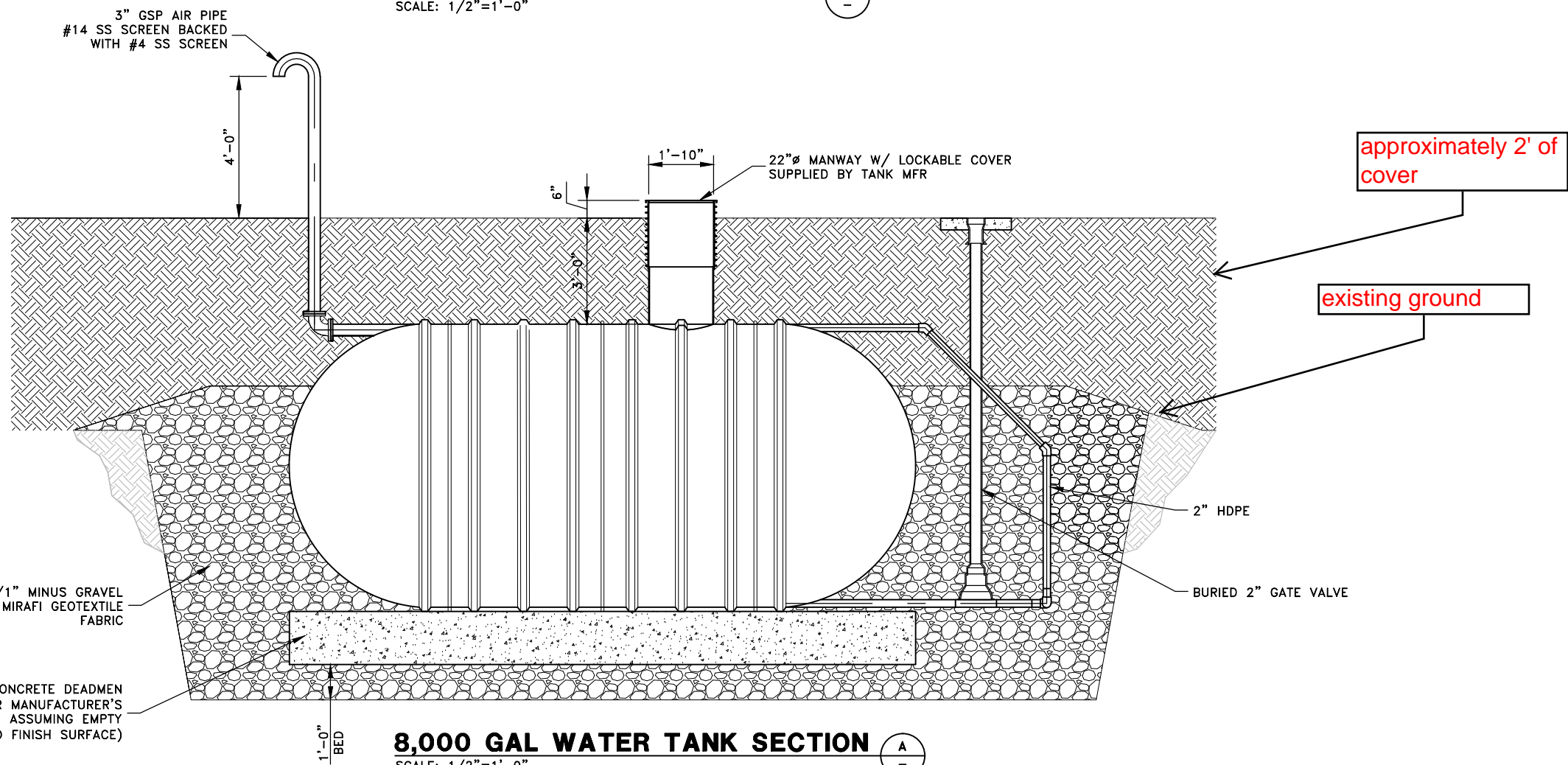
0 1/2 1
DRAWING IS TO SCALE
IF BAR MEASURES:
1" = FULL SCALE
1/2" = HALF SCALE

SHEET
PSA-3

REVIEW SET ONLY



8,000 GAL WATER TANK PLAN (6)
SCALE: 1/2"=1'-0"



8,000 GAL WATER TANK SECTION (A)
SCALE: 1/2"=1'-0"

NO.	DATE	DESIGN	DRAWN	CHECKED
A	7/3/14	RJR	MWC	RJR
REVISIONS				

WEBER COUNTY RECREATIONAL FACILITIES
WATER SYSTEM UPDATES AT WEBER MEMORIAL PARK
CIVIL DETAILS

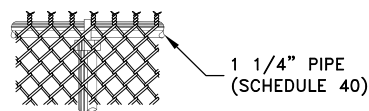
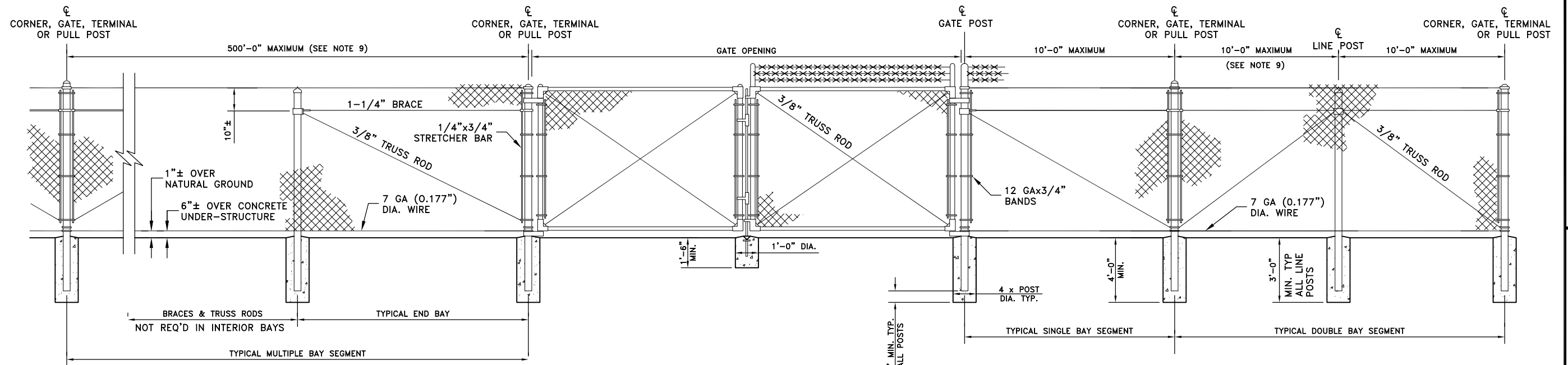
AQUA
ENGINEERING
533 W. 2600 S., SUITE 275, BOUNTIFUL, UT 84010
PHONE (801) 299-1327 FAX (801) 299-0153

0 1/2 1
DRAWING IS TO SCALE
IF BAR MEASURES:
1" = FULL SCALE
1/2" = HALF SCALE

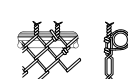
SHEET
CD-2

REVIEW SET ONLY

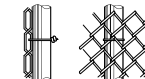
JRM 07/07/2014 W:\Weber Memorial Park\Drawings\CD-1 to CD-4.dwg



TWISTED AND BARBED SELVAGE
(TYPE II FENCE)

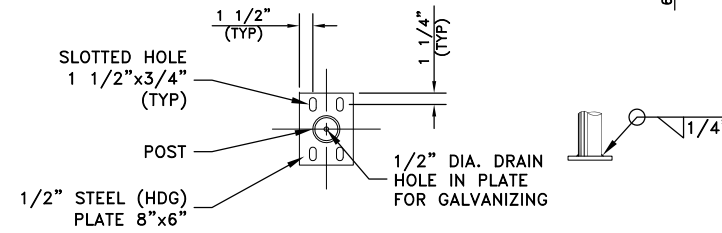


RAIL TIE

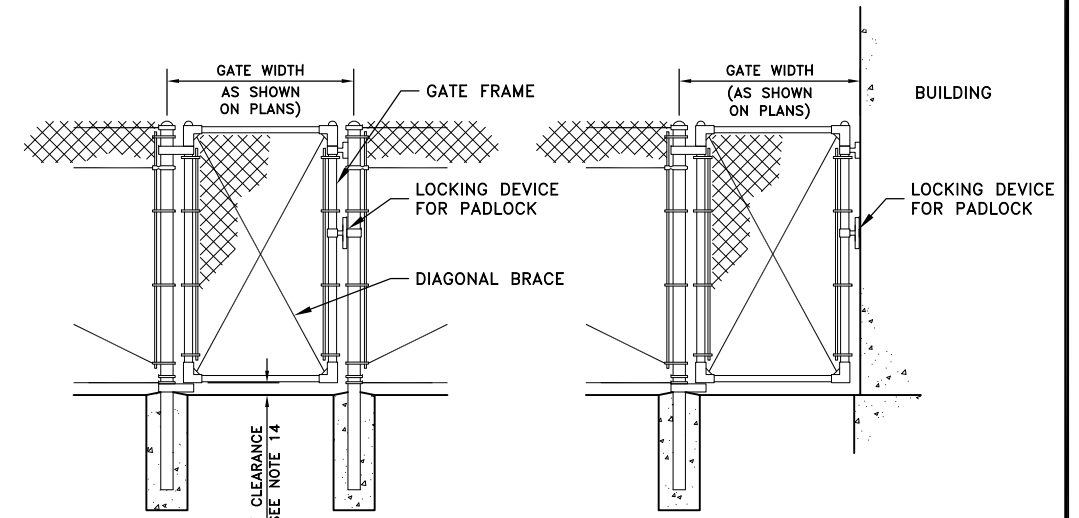


PIPE POST TIE

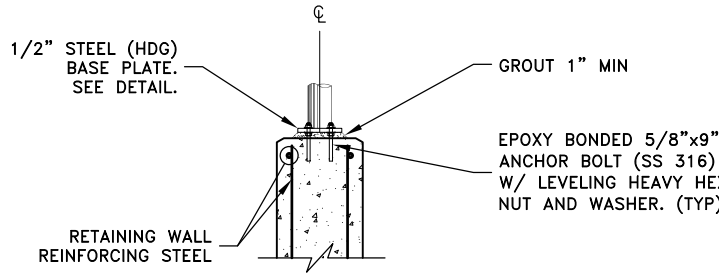
TYPICAL TIE DETAILS



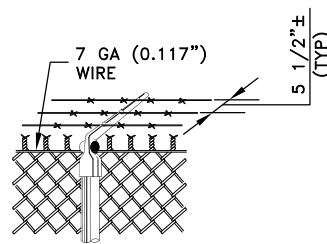
STEEL BASE PLATE



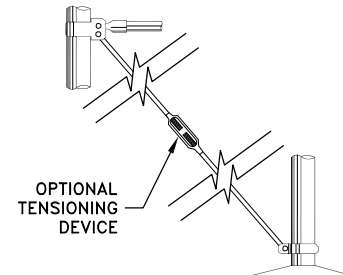
SINGLE LEAF PEDESTRIAN GATE



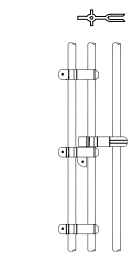
FENCE ON RETAINING WALL DETAILS



BARBED WIRE ARM AND TENSION WIRE
(SHOWING TYPICAL TENSION WIRE TIE)
(TYPE I FENCE)



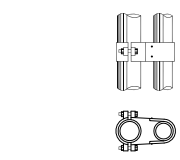
BRACE AND TRUSS CONNECTIONS



DROP ROD ASSEMBLY

GATES			
GATE POSTS AND GATE FRAMES			
HEIGHT	GATE OPENING	GATE POST	GATE FRAME
UNDER 6 FEET	SINGLE TO 6' OR DOUBLE TO 12'	2"	1"
	SINGLE OVER 6' TO 8' OR DOUBLE OVER 12' TO 16'	2-1/2"	1-1/2"
	SINGLE OVER 8' TO 12' OR DOUBLE 16' TO 24'	3-1/2"	
6 FEET AND OVER	SINGLE TO 6' OR DOUBLE TO 12'	2-1/2"	2"
	SINGLE OVER 6' TO 13' OR DOUBLE OVER 12' TO 24'	4"	
	SINGLE OVER 13' TO 18' OR DOUBLE OVER 24' TO 36'	6"	
	SINGLE OVER 18' OR DOUBLE OVER 36'	8"	

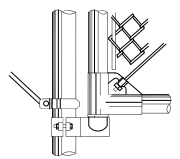
GAGE OF FABRIC	HEIGHT OF FABRIC	LENGTH OF END, CORNER OR PULL POSTS	LENGTH OF LINE POSTS	SIZE OF POSTS				GATE POST	
				END, CORNER & PULL		LINE POSTS (MIN SIZE)			
				PIPE OPTION	RECTANGULAR OPTION	PIPE OPTION	H POST OPTION		
	9	7'	10'	9'-8"	2-1/2"	3-1/2"	2"	1-7/8"x1-5/8"	SEE GATE POST TABLE
	9	6'	9'	8'-8"	2-1/2"	3-1/2"	2"	1-7/8"x1-5/8"	
	9	5'	8'	7'-8"	2"	3-1/2"	1-1/2"	1-5/16"x1-1/2"	
	9	4'	6'	5'-8"	2"	3-1/2"	1-1/2"	1-5/16"x1-1/2"	
	9	3'	5'	4'-8"	2"	3-1/2"	1-1/2"	1-5/16"x1-1/2"	



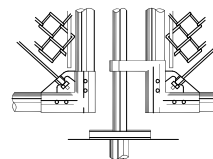
TOP GATE HINGE



GATE HOLD BACK



BOTTOM GATE HINGE AND GATE DETAILS



CENTER GATE STOP AND GATE DETAILS

(NOTE: OPTIONAL WELDED OR RIVETED CONSTRUCTION)

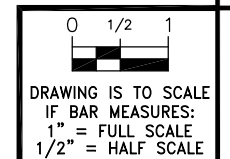
CHAIN LINK FENCE DETAIL

SCALE: NTS

7

NOTES:

- MATERIALS, CONSTRUCTION AND WORKMANSHIP SHALL BE IN ACCORDANCE WITH THE WRITTEN SPECIFICATIONS.
- THE TYPE OF TOP SUPPORT IS SPECIFIED IN THE SPECIFICATIONS: TYPE I, TENSION WIRE; AND TYPE II, TUBULAR RAIL.
- BARBED WIRE SHALL BE USED ONLY WHEN INDICATED ON THE PLANS AND IN THE SPECIFICATIONS.
- TWISTED AND BARBED SELVAGE, TOP AND BOTTOM, SHALL BE USED ON FENCES FIVE FEET OR GREATER IN HEIGHT.
- TWISTED AND BARBED SELVAGE ON TOP AND TWISTED AND BARBED SELVAGE ON BOTTOM SHALL BE USED ON FENCES LESS THAN FIVE FEET IN HEIGHT.
- ALL STEEL PIPE MEMBERS SHALL CONFORM TO THE REQUIREMENTS OF ASTM F1043 GROUP 1A, SCHEDULE 40, HOT DIPPED ZINC COATED STEEL PIPE.
- OPTIONS EXERCISED SHALL BE UNIFORM THROUGHOUT THE PROJECT.
- LINE POSTS SHALL BE LOCATED AT EQUAL SPACINGS FOR EACH SEGMENT WITH MAXIMUM SPACING AS FOLLOWS:
 - TANGENT SECTIONS TO 500 FEET RADIUS--NOT MORE THAN 10 FEET.
 - UNDER 500 FEET RADIUS TO 200 FEET RADIUS--NOT MORE THAN 8 FEET.
 - UNDER 200 FEET RADIUS TO 100 FEET RADIUS--NOT MORE THAN 6 FEET.
 - UNDER 100 FEET RADIUS--NOT MORE THAN 5 FEET.
- THE MINIMUM HEIGHT OF FABRIC ON FENCES AND GATES SHALL BE 6 FEET.
- ALL CONCRETE SHALL HAVE A MINIMUM OF 5 SACKS OF CEMENT PER CUBIC YARD, OR 28-DAY COMPRESSIVE STRENGTH OF 2,500 PSI.
- FASTEN FABRIC TO TOP AND BOTTOM TENSION CABLE AT 18 INCH INTERVALS. FASTEN TO LINE POSTS AT 12 INCH INTERVALS.
- GATE TO BE INSTALLED WITH KEPPER TO SECURE IN OPEN POSITION.
- GATES LESS THAN 8'-0" IN WIDTH SHALL BE SINGLE LEAF.
- SEE SPECIFICATIONS FOR CLEARANCES IN SNOW REGIONS.



NO.	DATE	DESIGN	DRAWN	CHECKED	REVISIONS	
					RJR	MWC
A	7/3/14					

WEBER COUNTY RECREATIONAL FACILITIES
WATER SYSTEM UPDATES AT WEBER MEMORIAL PARK
CIVIL DETAILS

AQUA ENGINEERING

503 W. 2600 S. SUITE 275, BOUNTIFUL, UT 84010
PHONE (801) 299-1327 FAX (801) 299-0153

SHEET
CD-3

REVIEW SET ONLY

SB 07/07/2014 W:\Weber Memorial Park\Drawings\CD-1 to CD-4.dwg