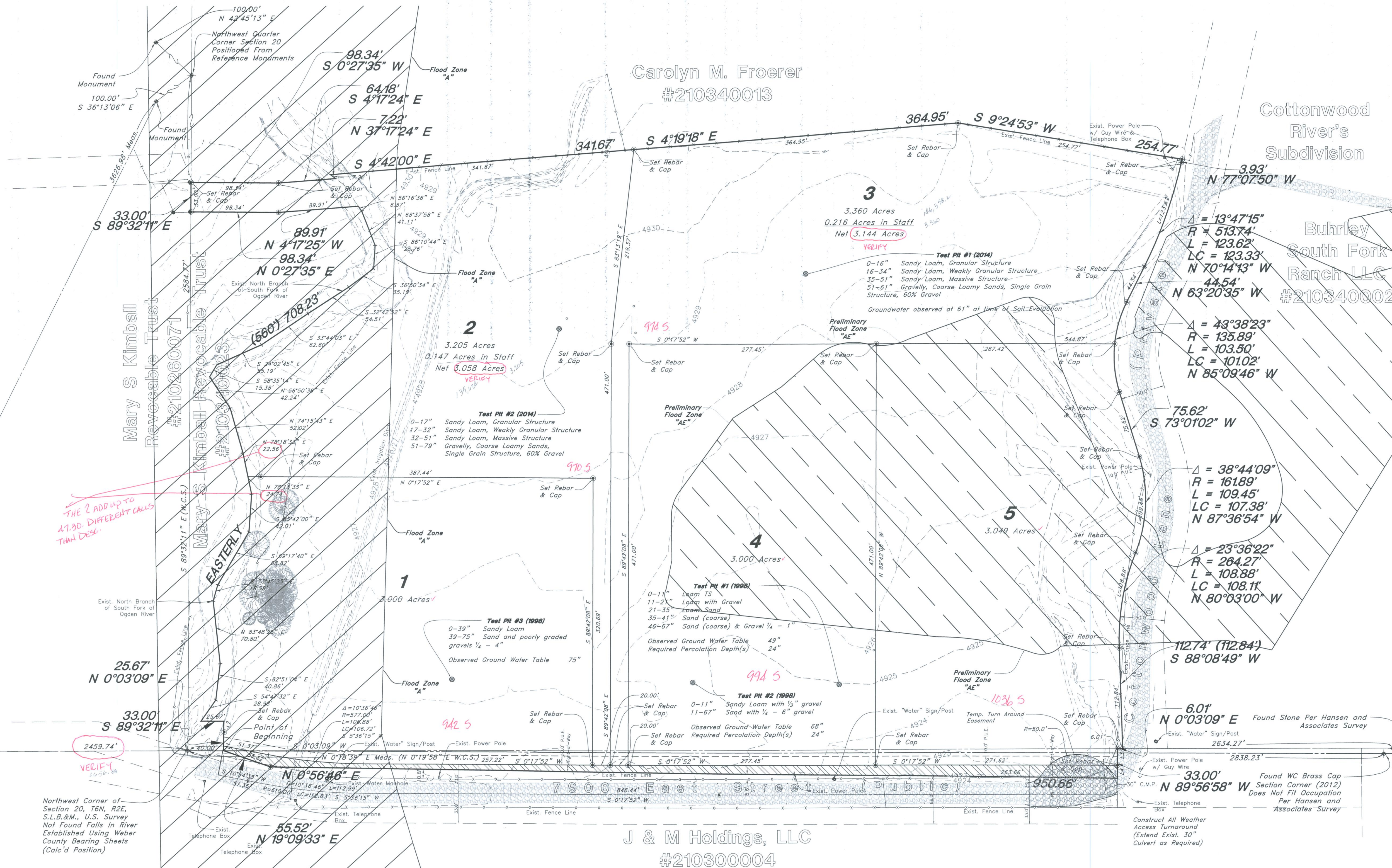
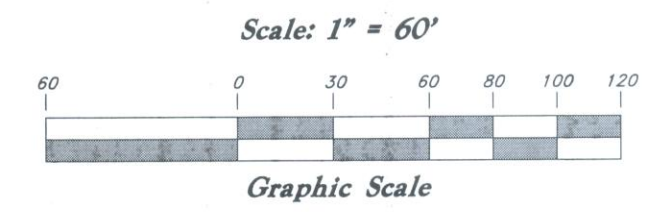
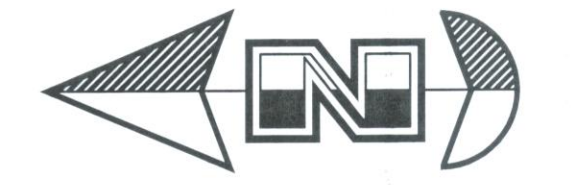


Satterthwaite Southfork Ranches

A part of Section 20, T6N, R2E, SLB&M, U.S. Survey
Huntsville City, Weber County, Utah
November 2014

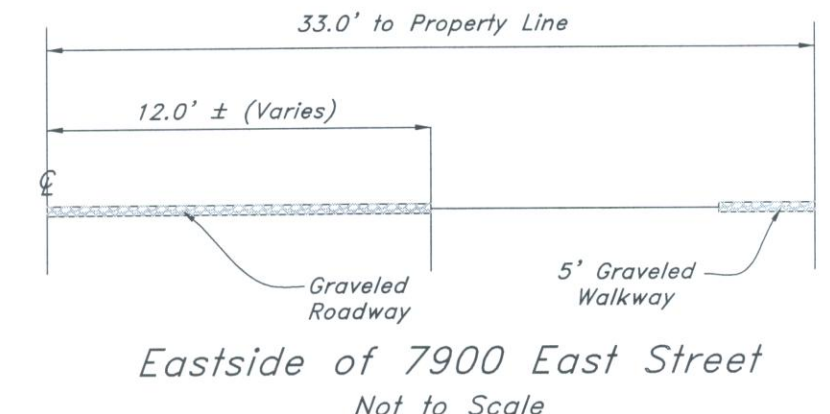


- Legend**
- Monument to be set (Rad.) Radial Line
 - (N/R) Non-Radial Line
 - PUE Public Utility Easement
 - PU&DE Public Utility & Drainage Easement
 - Section Line
 - Easement Lines
 - Existing Parcel Lines
 - Fence
 - Set Hub & Tack
 - Set Nail & Washer
 - Set 5/8"x 24" Long Rebar & Cap w/ Lathe
 - Test Pit
 - Dedicated for Public Right-of-way
 - Existing Flood Zone "A"
 - Preliminary Flood Zone "AE"

PARCEL LINE DATA

SEGMENT	LENGTH	BEARING
L1	5.11'	S 89°31'59" E
L2	27.89'	S 89°32'13" E
L3	18.49'	S 89°56'58" E
L4	14.51'	S 89°56'58" E

- NOTES:**
- 10' Wide Public Utility and Drainage Easements each side of property line as indicated by dashed lines, unless otherwise shown.
 - No Structures were found within 50 feet of the Exterior Property Line.
 - Due to the topography and the location of this subdivision all owners will accept responsibility for any storm water runoff from the road adjacent to this property until curb and gutter is installed.
 - A portion of this property falls within Flood Zone "A" with information obtained from FEMA Flood Plain Map 49057C0475E, dated Preliminary 16 Dec. 2005, and is depicted on this Plat.
 - A portion of this property falls within the Preliminary FEMA Flood Plain 49057C0475F Dated 27, Oct 2011 and marked as Preliminary.



GREAT BASIN ENGINEERING
5746 SOUTH 1475 EAST OGDEN, UTAH 84403
MAIN (801)394-4515 S.L.C (801)521-0222 FAX (801)392-7544
WWW.GREATBASINENGINEERING.COM

2 of 2
WEBER COUNTY RECORDER

ENTRY NO. _____ FILED FOR RECORD AND
RECORDED _____ AT
IN BOOK _____ OF OFFICIAL
RECORDS, PAGE _____ RECORDED
FOR _____

WEBER COUNTY RECORDER
BY: _____ DEPUTY

THE 2 ADD UP TO 47.30 DIFFERENT CALLS THAN DESE.

VERIFY 2006-58

Northwest Corner of Section 20, T6N, R2E, S.L.B.&M., U.S. Survey Not Found Falls In River Established Using Weber County Bearing Sheets (Calc'd Position)

Reference Monument

West Quarter Corner Section 17, T6N, R2E, S.L.B.&M., U.S. Survey (Found WC Brass Cap)