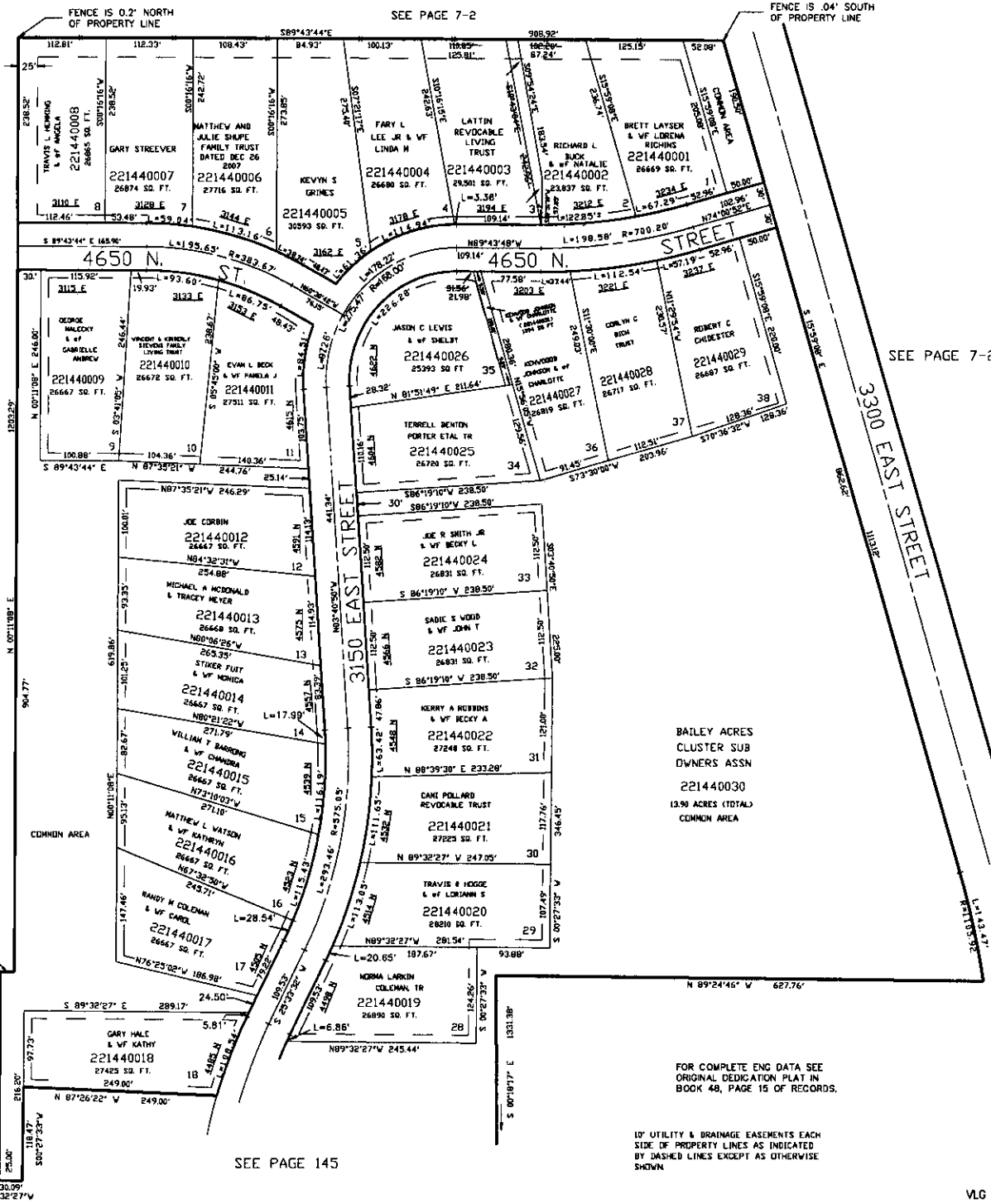


PART OF THE S.W. 1/4, OF SEC. 17, T.7N., R.1E., S.L.B. & M.  
**BAILEY ACRES CLUSTER SUBDIVISION PHASE 1**

TAXING UNIT: 36

IN WEBER COUNTY SCALE 1" = 100'



SEE PAGE 7-2

SEE PAGE 7-2

SEE PAGE 145

BAILEY ACRES  
 CLUSTER SUB  
 OWNERS ASSN  
 221440030  
 (3.90 ACRES TOTAL)  
 COMMON AREA

FOR COMPLETE ENG DATA SEE  
 ORIGINAL DEDICATION PLAT IN  
 BOOK 48, PAGE 15 OF RECORDS.

10' UTILITY & DRAINAGE EASEMENTS EACH  
 SIDE OF PROPERTY LINES AS INDICATED  
 BY DASHED LINES EXCEPT AS OTHERWISE  
 SHOWN

