



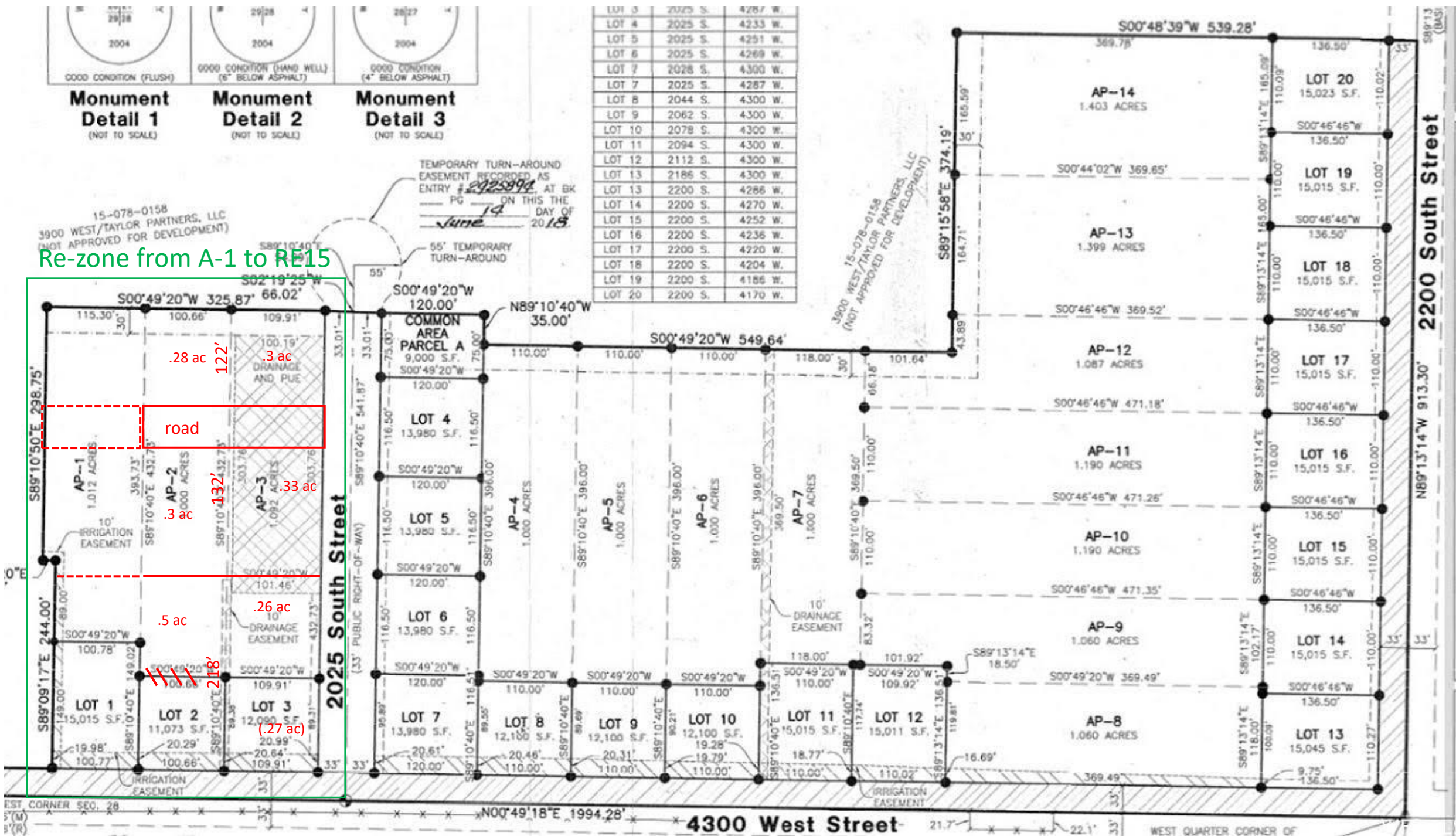
Monument Detail 1
(NOT TO SCALE)
Monument Detail 2
(NOT TO SCALE)
Monument Detail 3
(NOT TO SCALE)

LOT 3	2025 S.	4267 W.
LOT 4	2025 S.	4233 W.
LOT 5	2025 S.	4251 W.
LOT 6	2025 S.	4269 W.
LOT 7	2028 S.	4300 W.
LOT 7	2025 S.	4287 W.
LOT 8	2044 S.	4300 W.
LOT 9	2062 S.	4300 W.
LOT 10	2078 S.	4300 W.
LOT 11	2094 S.	4300 W.
LOT 12	2112 S.	4300 W.
LOT 13	2186 S.	4300 W.
LOT 13	2200 S.	4286 W.
LOT 14	2200 S.	4270 W.
LOT 15	2200 S.	4252 W.
LOT 16	2200 S.	4236 W.
LOT 17	2200 S.	4220 W.
LOT 18	2200 S.	4204 W.
LOT 19	2200 S.	4186 W.
LOT 20	2200 S.	4170 W.

TEMPORARY TURN-AROUND EASEMENT RECORDED AS ENTRY # 2925894 AT BK _____ PG _____ ON THIS THE 14 DAY OF June 2018

15-078-0158
3900 WEST/TAYLOR PARTNERS, LLC
(NOT APPROVED FOR DEVELOPMENT)

Re-zone from A-1 to RE15



.28 ac
122'
road
.3 ac
132'
.33 ac
.5 ac
218'
.26 ac

2200 South Street

33'

33'

33'

5'(M)
5'(R)

WEST QUARTER CORNER OF